

IBM NetVista Thin Client N2200w Windows-Based Terminal



Using the Setup
Wizard

July 2000



© IBM Corporation

IBM NetVista Thin Clients
Access for today, flexibility for tomorrow



Setup Wizard



WBT Setup Wizard



Copyright (c) IBM Corporation

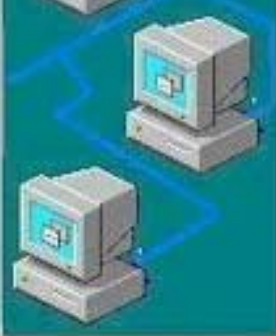
Product ID:
942a4f8a-0060-a826-d3-11-11-d4-c0-93

Welcome...

This wizard will help you set up your terminal to connect to a Windows Terminal Server

< Back Next >

- At Initial Boot
- After a Reset to Factory Settings



Programs listed below are licensed under the following terms and conditions in addition to the terms of the international Program License Agreement.

Name: WST Se 1.5 for IBM Network

Number: 5048-C09

Price: not applicable - software product

License: not separately charged

Authorization for Use on Home/Portable

You must accept this agreement to use this terminal. Press "Accept" to accept the agreement and continue with the setup process.

< Back Accept



Notes



OBJECTIVE:

The objective of this presentation is to provide a brief look at the minimum configuration tasks that need to be performed when setting up a NetVista Windows-based Terminal (WBT) for the first time.

From the start, the WBT is designed to require very little configuration, and most of the configuration tasks that an administrator or a user can get into are also fairly simple.

Note that the best way to get familiar with the WBT is simply to use it, but in the event that this cannot be done at this time, then this presentation at least illustrate the important configuration panels used.

The panels displayed here are the panels that show up either when a unit is powered on for the first time, or after a unit is reset to factory settings.

The WBT Setup Wizard is the initial configuration tool that provides the minimum configuration data for the unit to become operational.

What is the minimal configuration data that needs to be supplied?

Resolution-DHCP-Finish



WBT Setup Wizard

Desktop and Refresh Frequency

The best available Desktop Area (resolution) and Refresh Frequency has been selected for you. You may choose other combinations from the list. To ensure your selection works with your monitor, click Test.

Desktop and Refresh Frequency

640 x 480 @ 60Hz Test...

WBT Setup Wizard

IP Address

Some or all of the IP information required for this terminal could not be automatically obtained. You may choose to use the automatically gathered information by clicking on the Yes button. We recommend that you enter IPs statically for best results

Yes, use the Ip information supplied by DHCP

No, I will enter static IP information

< Back Next >

WBT Setup Wizard

You have successfully completed the Setup Wizard.

Click Finish to apply the setting you have specified and exit the Wizard.

< Back Finish



Notes



The three panels illustrated here represent the minimal path to be up and running with the WBT, after the initial splash screen and license agreement panels. So, 5 panels in total from beginning to end (assuming DHCP is used).

In this case, there are basically two decisions to make:

- Choose a display resolution
- Choose to use DHCP

Assuming all these defaults are chosen, all the user needs to do is to click Next on all the panels.



IP Network Data



WBT Setup Wizard

IP Address

Some or all of the IP information required for this terminal could not be automatically obtained. You may choose to use the automatically gathered information by clicking on the Yes button. We recommend that you enter IPs statically for best results

Yes, use the Ip information supplied by DHCP

No, I will enter static IP information

WBT Setup Wizard

Fill in the following optional information to configure the terminal's name resolution.

Enable DNS

Default Domain Name:

Primary Server IP: . . .

Secondary Server IP: . . .

Enable WINS

Primary Server IP: . . .

Secondary Server IP: . . .

WBT Setup Wizard

Specify an IP Address

You must specify the following network information. If you do not know this information, ask your network administrator.

IP Address: . . .

Subnet Mask: . . .

Gateway: . . .

Terminal Name

Click Finish to apply the setting you have specified and exit the Wizard.



Notes



On the other hand, if the choice is to use static IP instead of DHCP, there are two panels where additional information is required:

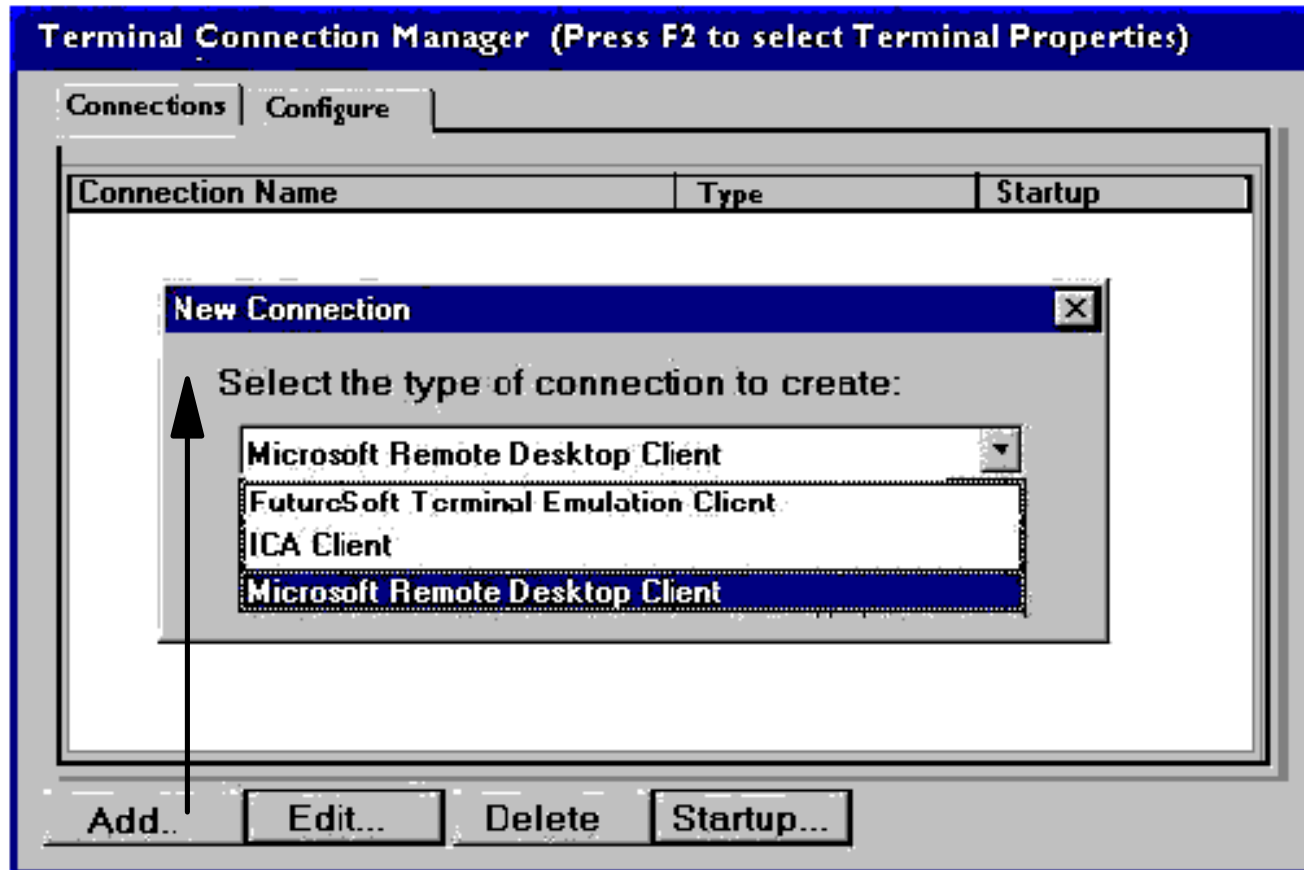
- The **basic IP settings** are entered in the bottom left panel illustrated. They consists of the usual IP address of the terminal, network mask and default gateway. The terminal name parameter is already defaulted to IBMWBT but can be changed if needed; this name is used as an identifier if you use the NetPrint Server facility for example (see the Printing Overview presentation).
- The next panel (top right hand corner) allows the specification of **DNS and/or WINS** servers (a primary and secondary server in each case). These fields are not mandatory, in the sense that a DNS or WINS server is only required if applications use IP host names that needs to be resolved into an IP address.

Both DNS and WINS servers can be specified, if desired. The DNS server query is attempted first, and if not resolved, the WINS server is tried.

Note that the WBT does not register with the WINS server (at the time of service pack 1) as a PC normally would.



Add a Connection





Notes



Once you click on Finish on the last Setup Wizard panel, the unit will automatically reboot, and the first panel displayed after the reboot is the Terminal Connection Manager panel, as displayed here, with no connection entries.

A click on the Add button brings up a choice of adding a connection.

There are three types of connections that can be added:

- A Microsoft Remote Desktop Protocol (RDP) connection to a Windows Terminal server
- A Citrix Independent Computing Architecture (ICA) connection to a MetaFrame server
- An emulator session (3270, 5250, VTxxx or Wyse) to a remote host



Terminal Connections



Terminal Connection Manager (Press F2 to select Terminal Properties)

Connections | Configure

| Connection Name | Type | Status |
|-----------------|-----------|--------|
| DETVMIC1 | Emulation | |
| NSEDWTSE | ICA | |
| nsedwtse | RDP | Active |
| TEst | Emulation | |

Connect | End

Terminal Connection Manager (Press F2 to select Terminal Properties)

Connections | Configure

| Connection Name | Type | Startup |
|-----------------|-----------|---------|
| DETVMIC1 | Emulation | |
| NSEDWTSE | ICA | |
| nsedwtse | RDP | Default |
| TEst | Emulation | |

Add.. | Edit... | Delete | Startup...



Notes



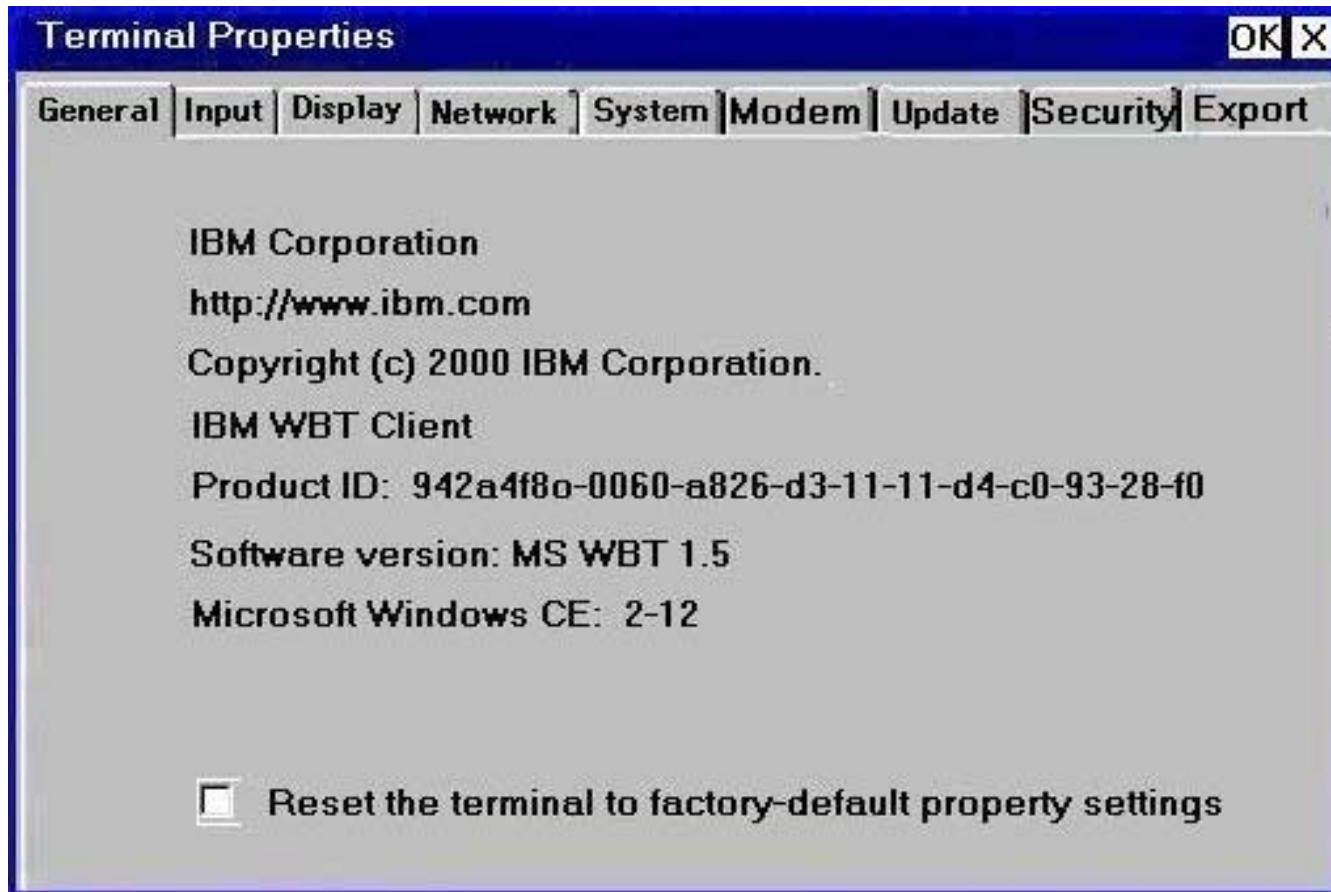
Once a few connection entries have been added, the Terminal Connection Manager might look like the one shown here at the bottom right hand corner of the page.

Entries are added, modified and deleted using the buttons at the bottom of the panel. A connection can also be designated to be the default connection (the one selected by default), or to be autostarted at power on.

In the top right hand corner is the panel as it appears when you select the Connections tab, instead of the Configure tab. The same connections appear, except that the buttons at the bottom of the panel then only allows a connection to be started or ended (no add, modify, delete). There is also a Status column on the display indicating whether a particular connection is currently active.



Terminal Properties





Notes



Once the WBT is operational, the only panel displayed at reboot, or power ON, is the Terminal Connection Manager panel, on which the user selects the connection(s) that need to be started. If a connection is auto started, the user does not have to take any action.

More than one connection can be started, but only one connection appears at a time, and the user can switch from one to the other using the CTL-ALT-UP Arrow key sequence (in other words, even though more than one connection is active, the connections are all full screen mode and the user must round robin from one to the other).

The terminal Connection Manager panel can be displayed using the CTL-ALT-END key sequence, and new connections started. If an active connection is selected, the focus switches to that connection.

Finally, on the Terminal Connection Manager, the F2 key is used to bring up the Terminal Properties panel (displayed here) from which many other parameters can be configured.

Additional details on the configuration panels available from this Terminal Properties panel are covered in a separate presentation.