



Part Number: 46L3834

---

## ThinkPad 570E Supplement to User's Manuals

---

You can use the *ThinkPad 570 User's Reference* (P/N 27L8798) for your ThinkPad 570E computer. This supplement presents additions and updates to the information in the user's reference and the preloaded online book. Use this information instead of the corresponding section in both of the user's manuals.

- **“Important safety instructions” on page 2**  
Presents the safety information.
- **“Information to be added to the user's reference” on page 4**  
Presents the information unique to the ThinkPad 570E.
- **“Updates to the user's reference” on page 7**  
Presents the updated information of the user's reference.
- **“Installing the operating systems” on page 10**  
Includes the following additions and updates to the online book.

Additional information:

- **“Installing Windows 98 Second Edition” on page 11**  
Your ThinkPad 570E computer supports Windows 98 Second Edition. If you install Windows 98 Second Edition, refer to this section.

**Note:** Windows 98 is preloaded when you purchase the computer.

To install the support software, use the procedure give in the online book for Windows 98.

Updated information:

- **“Installing Windows 98” on page 12**
- **“Installing Windows 95” on page 15**

## Important safety instructions



Reduce the risk of fire and electric shock by always following basic safety precautions, including the following:

- Do not use your computer in or near water.
- During electrical storms:
  - Do not use your computer with the telephone cable connection.
  - Do not connect the cable to or disconnect it from the telephone outlet on the wall.



There is a danger of an explosion if the rechargeable battery pack is incorrectly replaced. The battery pack contains a small amount of harmful substances. To avoid possible injury:

- Replace only with a battery of the type recommended by IBM.
- Keep the battery pack away from fire.
- Do not expose it to water or rain.
- Do not attempt to disassemble it.
- Do not short-circuit it.
- Keep it away from children.

Do not put the battery pack in trash that is disposed of in landfills. When disposing of the battery, comply with local ordinances or regulations and your company's safety procedures. In the United States, call IBM at 1-800-IBM-4333 for information on disposal.



**There is a danger of an explosion if the backup battery is incorrectly replaced.**

**The lithium battery (IBM P/N 02K6572 UL-recognized component [file no. MH12210]) contains lithium and can explode if it is not properly handled or disposed of.**

**Replace only with a battery of the same type.**

**To avoid possible injury or death, do not: (1) throw or immerse the battery into water, (2) allow it to heat to more than 100°C (212°F), or (3) attempt to repair or disassemble it. Dispose of it as required by local ordinances or regulations and your company's safety procedures.**

**CAUTION:**

**To reduce the risk of fire, use only No.26 AWG or larger (thicker) telephone cable.**

Save these instructions.

## Information to be added to the user's reference

This section describes the additional information of the user's reference.

- **Specification**

The dimensions of the ThinkPad 570E computer are as follows:

- Processor: Intel® Pentium® III 450 MHz or 500 MHz.
- Width: 300 mm (11.8 in.)
- Depth: 240 mm (9.4 in.)
- Height: 13.3-inch LCD model: 27.95 mm (1.1 in.)

- **Infrared features**

If you are using Windows NT and use the infrared feature, you need to buy the application software.

- **BIOS Setup Utility updates**

- **Additional function**

In the config window of the BIOS Setup Utility, **CPU** is added. You can disable or enable the serial number information of the CPU card in this screen.

- **Key assign update**

The key assign of the BIOS Setup Utility has been updated. Step 2 in the “Selecting the Startup item” procedure in page 27, is describes as follows:

“+ or - moves the drive up or down in order.”

It is changed to

“**F5** or **F6** moves the drive up or down in order.”

- **Error code**

The new error messages are as follows:

Error code/Problem	Action
Microphone input is too low.	Make sure that Microphone Boost is turned on and set as follows: <ol style="list-style-type: none"> <li>1. Double-click the <b>Volume</b> icon on the task bar. The Mixer panel opens.</li> <li>2. Click <b>Options</b>.</li> <li>3. Click <b>Properties</b>.</li> <li>4. Click the <b>Recording</b> radio button.</li> <li>5. Click <b>OK</b>.</li> <li>6. Find the <b>Microphone volume control</b> and click <b>Advanced</b></li> <li>7. Check that the <b>Microphone boost or +20 dB</b> and <b>Close</b>.</li> </ol>
0188	Have the computer served.
0189	Have the computer served.

- **Using the modem feature**

You can use the ThinkPad 570's built-in modem function in a particular country only if IBM has received approval from the proper authorities in that country. If IBM is not authorized, a question mark (?) appears to notify you that the modem function is disabled.

You can check the up-to-date listing of countries on the IBM Web site (<http://www.pc.ibm.com/support>). The listing is updated when the approval of a country is received.

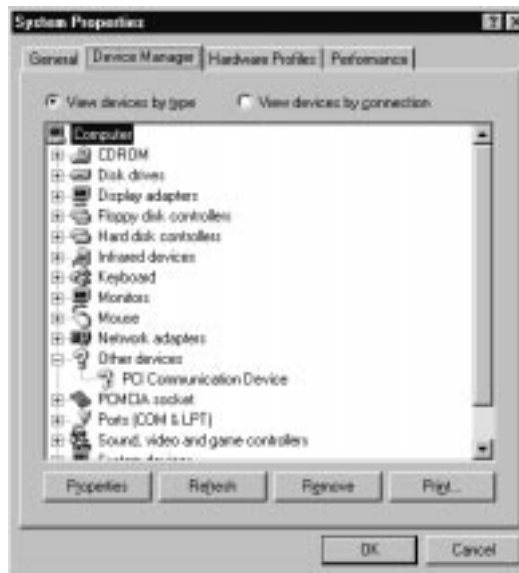
To use the modem function in a country where it is authorized, go to the same Web site, select **Notebooks and PC companions** from the menu, and download the device and software.

For example, suppose you are in a country where IBM has not received approval for the built-in modem. Open the “System Properties” window, as follows:

**1** Double-click **My Computer, Control Panel**, and then **System**.

**2** Click the **Device Manager** tab.

A ? mark appears to the left of both **Other devices** and its subdirectory, **PCI Communication Device**.



If you click **Add New Hardware** in the Control Panel, a ? mark appears to the left of **PCI Communication Device** in the Devices box.

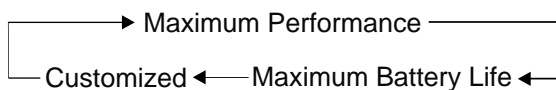


## Updates to the user's reference

This section presents updates to the information in the user's reference.

- **Fn key function**

Contrary to what is stated in the user's reference (page 39), the **Fn+F11** combination does not change the processor speed. Instead, the key combination switches between power modes as follows:



- **Setting for the TrackPoint**

The “Disabling the TrackPoint” section in the user's reference describes how to set **Auto-Disable** if you are using certain mouse types. Actually the TrackPoint is set to **Auto-Disable** as the default. With this setting, the TrackPoint is disabled automatically if a mouse is connected to the external-input-device connector and if any of the following is true:

- The system is starting.
- The system is resuming from suspend mode.
- Your computer is attached to the ThinkPad Port Replicator with Advanced EtherJet Feature.

If no external mouse is connected, the TrackPoint remains enabled.

A mouse that is compatible with the IBM PS/2 Miniature Mouse can work simultaneously with the TrackPoint if the TrackPoint is set to **Enable**. To enable the TrackPoint, do as follows:

- 1** Start the ThinkPad Configuration program.
- 2** From the drop-down menu, select **Enable**
- 3** Click **OK**.

**Note:** If you are using a mouse connected to the serial connector or the USB connector, you should not use the TrackPoint at the same time. Select **Disable** rather than **Enable** or **Auto-Disable**.

- **Solving computer problems**

*Suspend or hibernation problem*

To troubleshoot this problem, disable the Ethernet port in the Windows NT environment as follows, rather than using the procedure in the user's reference:

Problem	Cause and action
<p>If you are using the port replicator, resuming normal operation from hibernation or suspend mode takes a long time.</p>	<p>This is not a problem. If you have not connected the network cable, the computer queries the Ethernet connection until the timeout time is reached. Connect the network cable if you want to use the Ethernet network. If you are not using the network, disable the Ethernet port as follows:</p> <p><b>For Windows 98:</b></p> <ol style="list-style-type: none"> <li>1. Double-click a <b>System</b> icon in the <b>Control Panel</b>.</li> <li>2. Click the <b>Device Manager</b> tab.</li> <li>3. Double-click <b>Network Adapter</b>.</li> <li>4. Double-click <b>Intel EtherExpress PRO PCI Adapter</b>.</li> <li>5. Select the <b>Disable in this hardware profile</b> check box.</li> <li>6. Click <b>OK</b>.</li> <li>7. Close all windows.</li> <li>8. Restart the computer.</li> </ol> <p><b>For Windows NT:</b></p> <ol style="list-style-type: none"> <li>1. Double-click the <b>Devices</b> icon in the <b>Control Panel</b>.</li> <li>2. Select <b>Intel EtherExpress PRO Adapter</b> and click <b>Stop</b>.</li> <li>3. Click <b>Startup...</b> and select <b>Disabled</b>.</li> <li>4. Click <b>OK</b>.</li> <li>5. Click <b>Close</b>.</li> <li>6. Close all windows.</li> <li>7. Restart the computer by powering it off and on again.</li> </ol>





## Installing the operating systems

This section presents additions and updates to the information in the online book.

### Additional driver

For Windows 98, Windows 95, and Windows NT users, On Screen Display Driver is supported for your ThinkPad computer. If you reinstall this driver, you can reinstall it from the Software Selection CD.

#### Version

To see what version of Windows 98 you are using, do the following:

1. Click **Start, Setting**, and click **Control Panel**.
2. Click **System**.

The following window appears:



**Windows 98:** Windows 98 4.10.1998

**Windows 98 Second Edition:** Windows 98 Second Edition 4.10.2222 A

## Installing Windows 98 Second Edition

To install Windows 98 Second Edition, do the following:

**1** Insert the Windows 98 CD-ROM into the CD-ROM drive of your computer.

**2** Make a temporary directory.

For example, at the DOS prompt, type the following:

```
MD c:\win98
```

**3** Copy all the cabinet (.CAB) files and installation programs from the Windows 98 CD-ROM to this directory.

At the DOS prompt, type the following:

```
COPY src_cd:\WIN98\*. * c:\win98
```

where `src_cd` is the drive letter of the CD-ROM drive letter of your computer, and `c:\win98` is the temporary directory that you made in step 2.

**4** Replace the Windows 98 CD-ROM with the Software Selection CD.

**Note:** If the “Application Installer” window appears, exit from it.

**5** Copy the latest file from the Software Selection CD to the temporary directory of your computer's hard disk. At the DOS prompt, type the following:

```
COPY src_cd:\DRIVERS\SUPPLE98\W98SE\*. * c:\win98
```

where `src_cd` is the drive letter of the CD-ROM drive letter of your computer, and `c:\win98` is the temporary directory that you made in step 2.

**6** To install APM mode, run the SETUP.EXE with APMINST.INF that you have copied into the temporary directory (`c:\win98`), and follow the description on the screen.

For example, type `C:\WIN98\SETUP.EXE C:\WIN98\APMINST.INF`

For details, refer to SETUP.TXT on the Windows 98 CD-ROM.

**7** After installing Windows 98 Second Edition, make sure that the Software Selection CD is in the CD-ROM drive of your computer, and click **Start**.

If the “Application Installer” window appears, exit from it.

**8** Click **Run....**

**9** In the name box, type the following:

```
src_cd:\DRIVERS\SUPPLE98\APM2APM\APM2APM.REG
```

where src\_cd is the drive letter of the CD-ROM.

**10** Click **OK**.

**11** Follow the instructions on the screen.

Update the three files of the Windows as follows:

**12** Click **Start**.

**13** Click **Run...**

**14** In the name box, type the following:

```
src_cd:\DRIVERS\W98UP\W98SE\Q239887\239887UP.EXE
```

where src\_cd is the CD-ROM drive letter of your computer.

**15** Click **OK**.

Follow the instruction on the screen.

**16** Do steps 12 to 15 for each of these:

```
src_cd:\DRIVERS\W98UP\W98SE\Q233017\233017UP.EXE
```

```
src_cd:\DRIVERS\W98UP\W98SE\Q242778\242778UP.EXE
```

where src\_cd is the CD-ROM drive letter of your computer.

**17** Click **OK** to reboot the computer.

## Installing Windows 98

To install Windows 98, do the following:

**1** Insert Windows 98 CD-ROM into the CD-ROM drive of your computer.

**2** Make a temporary directory.

For example, at the DOS prompt, type the following:

```
MD c:\win98
```

**3** Copy all the cabinet (.CAB) file and the installation programs from the Windows 98 CD-ROM to this directory.

At the DOS prompt, type the following:

```
COPY src_cd:\WIN98\*. * c:\win98
```

where `src_cd` is the drive letter of the CD-ROM drive letter of your computer, and `c:\win98` is the temporary directory that you made in step 2 on page 12.

**4** Replace the Windows 98 CD-ROM with the Software Selection CD.

**Note:** If the “Application Installer” window appears, exit from it.

**5** Copy the latest file from the Software Selection CD to the temporary directory of your computer's hard disk. At the DOS prompt, type the following:

```
COPY src_cd:\DRIVERS\SUPPLE98\W98GOLD\*. * c:\win98
```

where `src_cd` is the drive letter of the CD-ROM and `c:\win98` is the temporary directory that you made in step 2 on page 12.

**6** Run the `SETUP.EXE` that you copy in the temporary directory (`c:\win98`), and follow the instructions on the screen.

For details, refer to `SETUP.TXT` on the Windows 98 CD-ROM.

**Note:** If the following message appears while you are reinstalling the Windows 98, go to “Updating the `DBLBUFF.SYS`’ on page 15” to update the `DBLBUFF.SYS` file. Then return to step 6 to continue the installation.

Example of the message:

```
MSGSRV32 caused a general protection fault in module KRNL386.EXE at 0001:001b51.  
MSGSRV32 caused a stack fault in module KRNL386.EXE at 0001.00005595.  
RUNDLL32 caused an invalid page fault in module KERNEL32.DLL at 015f:bff9dba7.  
MSGSRV32 caused an invalid page fault in module KERNEL32.DLL at 015f:bff9d.  
A Fatal Exception 0D has occurred at 0028:C0001FCE in VXD VMM(01) + 00000F  
A Fatal Exception 0E has occurred at 015F:BFF9DBA7.
```

**7** After installing Windows 98, make sure the Software Selection CD is in the CD-ROM drive of your computer; then click **Start**.

If the “Application Installer” window appears, exit from it.

**8** Click **Run...**

**9** In the name box, type the following:

```
src_cd:\DRIVERS\SUPPLE98\APM2APM\APM2APM.REG
```

where src\_cd is the CD-ROM drive letter of your computer.

**10** Click **OK**

**11** Follow the instructions on the screen.

You need to update the USB driver. Do the following:

**12** Click **Start**.

**13** Click **Run...**

**14** In the name box, type the following:

```
src_cd:\DRIVERS\W98UP\W98GOLD\QFE80404\189591UP.EXE
```

where src\_cd is the CD-ROM drive letter of your computer.

**15** Click **OK**.

The following message appears: "This program installs the Windows 98 USB Wakeup Update. Do you want to continue?"

**16** Click **Yes**.

**17** Click **OK** to reboot the computer.

Update the IFSMGR.VXD as follows:

**18** In the C:\WINDOWS\SYSTEM\VMM32 directory (or in the subdirectory of the SYSTEM\VMM32 in which Windows 98 is installed), type the following:

```
REN IFSMGR.VXD IFSMGR_.$$$
```

**19** At the DOS prompt, type the following:

```
COPY src_cd:\DRIVERS\W98UP\W98GOLD\Q223809\*.*
```

where src\_cd is the CD-ROM drive letter of your computer.

Update the PCI BUS driver as follows:

**20** Click **Start**.

**21** Click **Run...**

**22** In the name box, type the following:

```
src_cd:\DRIVERS\W98UP\W98GOLD\Q233017\233017UP.EXE
```

where src\_cd is the CD-ROM drive letter of your computer.

**23** Click **OK**.

Follow the instructions on the screen.

**24** Click **OK** to reboot the computer.

*Updating the DBLBUFF.SYS:* You do this procedure only when a message appears while you are running the SETUP.EXE to install Windows 98.

**1** Click **Start**.

**2** Click **Run....**

**3** Type the following:

```
src_cd:\DRIVERS\W98UP\W98GOLD\Q209321\209321UP.EXE
```

where src\_cd is the drive letter of the CD-ROM drive letter of your computer.

**4** Click **OK**.

**5** Follow the instructions on the screen.

**6** The following message appears: "Please type the location where you want to place the extracted files." Type the address of the temporary directory (c:\win98), and click **OK**.

**7** Return to step 6 on page 13 to continue the installation of the Windows 98.

## Installing Windows 95

Some new files must be incorporated at the time of installation.

**Note:** To install Windows 95 from a CD-ROM drive, create a Startup Disk for Windows 95 so that you can enable use the CD-ROM drive. Then boot the system with the diskette.

To create the Startup Disk for Windows 95, do as follows:

1. Insert a blank diskette into the diskette drive.
2. Open the **Control Panel** window.
3. Double-click **Add/Remove Program**.
4. Click the **Startup Disk** tab.

5. Click **Create Disk...**
6. Follow the instructions on the screen.

### *Installing Windows 95 OSR1*

**1** Make sure there is enough space in the hard disk to store the cabinet files and the installation programs. The amount of the space required may vary, depending on the national language supported by your version of Windows 95).

**2** Make a temporary directory.

For example, at the DOS prompt, type the following:

```
MD c:\win95
```

and press **Enter**.

**3** Insert the Windows 95 CD-ROM into the CD-ROM drive.

**4** Copy all the cabinet (.CAB) files and the installation programs from the \WIN95 directory of the Windows 95 CD-ROM to the temporary directory.

At the DOS prompt, type the following:

```
COPY src_cd:\WIN95\*.*. c:\win95
```

where `src_cd` is the drive letter of the CD-ROM drive and `c:\win95` is the temporary directory that you made in step 2.

**5** Press **Enter**.

**6** Replace the Windows 95 CD-ROM with the Software Selection CD.

**7** Copy the updated files from the Software Selection CD to the temporary directory.

At the DOS prompt, type the following:

```
COPY src_cd:\DATA\WIN95\cc\OSR0INF\*.* c:\win95
```

where `src_cd` is the drive letter of the CD-ROM drive, `cc` is the country code, and `c:\win95` is the temporary directory that you made in step 2.

**8** Press **Enter**.

**9** Install the operating system by entering `SETUP.EXE` at the temporary directory prompt.

**10** Refer to the Windows 95 documentation and the instructions that appear on the screen to complete the installation.



- 11** To activate the PC Card slot, double-click the **PC Card** icon in the **Control Panel**. The PC Card Wizard window launches. Click **No** twice, and reboot the system.
- 12** If required, install Service Pack Version 1, available from the Microsoft Web site.
- 13** After you complete the installation, remove all the files in the temporary directory and then remove the directory itself, to free the space on the hard disk.

*Installing Windows 95 OSR2.1 or OSR2.5:* If you have a CD-ROM version of the Windows 95 OSR2.1, do the following:

**1** Make sure there is enough space on the hard disk to store the cabinet files and the installation programs. The amount of space required may vary, depending on the language supported by your version of Windows 95).

**2** Make a temporary directory.

For example, at the DOS prompt, type the following:

```
MD c:\win95
```

and press **Enter**.

**3** Insert the Windows 95 CD-ROM into the CD-ROM drive.

**4** Copy all the cabinet (.CAB) files and the installation programs from the \win95 directory of the Windows 95 CD-ROM disk to the temporary directory.

At the DOS prompt, type the following:

```
COPY src_cd:\WIN95\*. * c:\win95
```

where `src_cd` is the drive letter of the CD-ROM drive, and `c:\win95` is the temporary directory that you made in step 2.

**5** Press **Enter**.

**6** Replace the Windows 95 CD-ROM with the Software Selection CD.

**7** Copy the updated files in the Windows 95 supplementary files from the Software Selection CD to the temporary directory.

At the DOS prompt, type the following:

```
COPY src_cd:\DATA\WIN95\cc\OSR2INF\*. *. c:\win95
```

where `src_cd` is the drive letter of the CD-ROM, `cc` is the country code, and `c:\win95` is the temporary directory that you made in step 2.

- 8** Press **Enter**.
- 9** Type the following:  
`COPY src_cd:\DATA\WIN95\cc\CARDBUS\*.*. c:\win95`  
where src\_cd is the drive letter of the CD-ROM drive.
- 10** Press **Enter**.
- 11** Install the operating system by entering `SETUP.EXE` at the temporary directory prompt.
- 12** Refer to the Windows 95 documentation and the instructions that appear on the screen to complete the installation.  
Disregard the instruction to install `USBD.SYS` and `UHCD.SYS` files.
- 13** Replace the Software Selection CD with the Windows 95 CD-ROM.
- 14** Change the current drive letter to the CD-ROM drive letter, and do one of the following:
- *For Windows 95 OSR2.1 CD-ROM users:* Run `\USBSUPP.EXE` in the `\OTHER\USB.` of the CD-ROM.
  - *For Windows 95 OSR2.5 CD-ROM users:* Run `\USBSUPP.EXE` and `\USBUPD2.EXE` in the `\OTHERS\UPDATES\USB` directory of the CD-ROM.
- 15** Replace the Windows 95 CD-ROM with the Software Selection CD.
- 16** At the DOS prompt, type the following:  
`src_cd:\DATA\WIN95\cc\QFE444\PCCARDUP.EXE`  
where src\_cd is the drive letter of the CD-ROM drive, and cc is the country code.
- 17** Press **Enter**.
- 18** Reboot the system.
- 19** To replace the Unimodem drivers to support the Intel Video Phone application, from the DOS prompt, go to `C:\WINDOWS\SYSTEM` (or the `SYSTEM` subdirectory where Windows 95 is installed).
- 20** Press **Enter**.
- 21** Refer to the documentation shipped with this version to finish the installation.
- 22** To active the PC Card slot, double-click the **PC Card** icon in the **Control Panel**. The PC Card Wizard window launches. Click **No** twice, and reboot the computer.