

Intel® Server Chassis SC5400/SC5400LX/SC5400BRP Quick Start User's Guide

Thank you for buying an Intel® Server Chassis. The following information will help you assemble your Intel® Server Chassis and install components.

If you are not familiar with ESD [Electrostatic Discharge] procedures used during system integration, see the complete ESD procedures described in your User Guide. For more details on Intel® Server Products, please see: www.intel.com/go/serverbuilder

This guide and other supporting documents are located on the web at <http://support.intel.com/support/motherboards/server/chassis/SC5400>



Supported Server Boards

Your Intel® Server Chassis SC5400BASE supports the following Intel® Server Boards:

- Intel® Server Board S5000PSL
- Intel® Server Board S5000V1N
- Intel® Server Board S5000XSL

Your Intel® Server Chassis SC5400LX or SC5400BRP supports the following Intel® Server Boards:

- Intel® Server Board S5000PSL
- Intel® Server Board S5000XSL

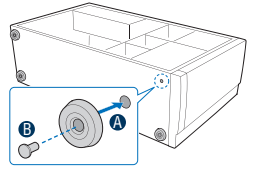
See your Intel® Server Board documentation for specific component integration requirements not addressed in this chassis Quick Start User's Guide.

1 Install Feet (pedestal only)

Note: This step applies to your chassis if configured as a pedestal system. If you plan to configure your chassis as a rackmount system, go to Step 2.

- A Insert rubber foot into chassis hole.
- B Secure foot by inserting pin through the rubber foot.

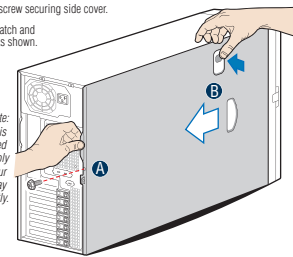
Note: Repeat above steps until all four feet are installed.



2 Remove the Side Cover

- A Remove screw securing side cover.
- B Push in latch and remove as shown.

Note: Chassis with a fixed power supply is shown. Your chassis may differ slightly.

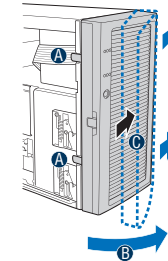


3 Remove the Bezel Assembly

CAUTION: Do not rotate the bezel assembly more than 40° or you will damage the bezel hooks at the right side of the bezel assembly.

Note: The bezel assembly consists of two components, a front door and a sub-bezel.

- A Release two plastic tabs.
- B Rotate bezel assembly no more than 40-degrees outward. If bezel assembly does not immediately disconnect from the chassis, then remove by tapping the left-hand side of the bezel assembly to disengage the bezel hooks on the right-hand side of the chassis.
- C At a 40 degree angle, push bezel assembly away from the chassis.



Warning

Read all caution and safety statements in this document before performing any of the instructions. Also see the Intel® Server Board and Server Chassis Safety Information document at: <http://support.intel.com/support/motherboards/server/sb/cs-010770.htm> for complete safety information.

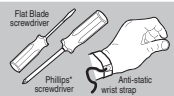
Warning

Installation and service of this product to be performed only by qualified service personnel to avoid risk of injury from electrical shock or energy hazard.

Caution

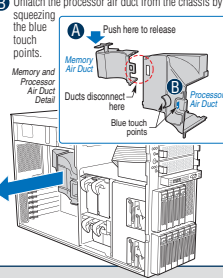
Observe normal ESD [Electrostatic Discharge] procedures during system integration to avoid possible damage to server board and/or other components.

Tools Required



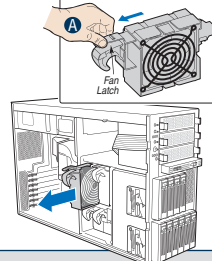
4 Remove the Air Ducts

- A Unlatch the memory air duct from the chassis by pressing the tab. Grasp the memory air duct and remove.
- B Unlatch the processor air duct from the chassis by squeezing the blue touch points.



5 Remove Hot-swap Fans (SC5400LX only)

- A Press latch; place finger into handle and pull out hot-swap fans.

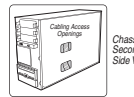


6 Install and Route Data and Power Cables to Fixed Drive Bays

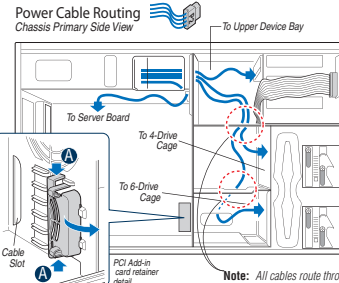
- A Press on two plastic tabs and remove PCI add-in card retainer to access cable routing slot.
- B Route longest power cables to the 6-drive bay and shorter cables to the 4-drive bay and upper device bay.

Power Cable Routing Guidelines:

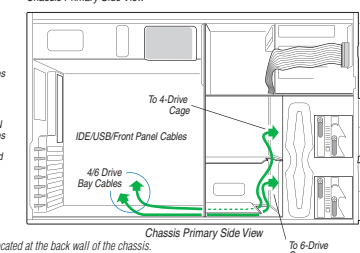
- P3, P4 and P5 power cables route to removable drives.
- P6, P7, P8, P9, P10, and P11 power cables to fixed drive bays; route as appropriate.
- P12 and P13 power cables (SAS/SATA); route to fixed drive bays as appropriate.



Note: Access openings are located on the secondary side of the chassis to facilitate cable routing if necessary.



SAS/SATA Cable Routing



Note: Front panel USB and one IDE cable are pre-routed by the factory. SAS or SATA cables are supplied with the server board and hot-swap drive accessory kits. No cables are supplied with the fixed drive bay kit.

7 Install Rack Conversion Kit (optional)

For complete steps on rack conversion, see the Rack Conversion Kit Installation Guide.

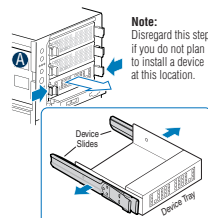
8 Install USB Floppy/CD/DVD Slimline Combo (optional)

See the installation instructions that came with your USB Floppy/CD Slimline combo kit to install this device. This device must be installed in the top slot of the upper bay.

Note: If you plan to configure your system for a rack mount installation, see the instructions that come with your rack mount kit for proper device orientation in the upper bay.

9 Remove Device Tray and Device Slides

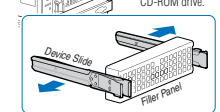
Note: Disregard this step if you do not plan to install a device at this location.



- A Press each slide inward to release. Pull slides and device tray out of device bay. Remove slides from tray as shown.

10 Remove Filler Panel and Device Slides for CD-ROM (optional)

Note: Disregard this step and Step 11 if you do not plan to install a CD-ROM drive.

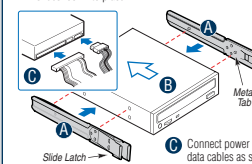


- A Press each slide inward to release. Pull slides and filler panel out of device bay. Remove slides from filler panel as shown.

11 Install CD-ROM Drive (optional)

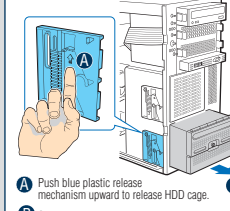
Note: Device slides are "tool-less" and do not require screws.

- A Press slide tabs into device mounting holes.
- B Insert device/slide assembly into chassis bay until slides lock into place.



- C Connect power and data cables as shown.

12 Remove HDD Cage(s) (optional)



- A Push blue plastic release mechanism upward to release HDD cage.
- B Slide hard drive cage out of chassis bay.

Note: If you plan to install fixed hard drives, proceed to Step 13.

13 Install Additional Drive Bays

For installing SAS/SATA fixed or hot-swap drives into the drive bays, refer to the Drive Cage Upgrade Kit Installation Guide.

