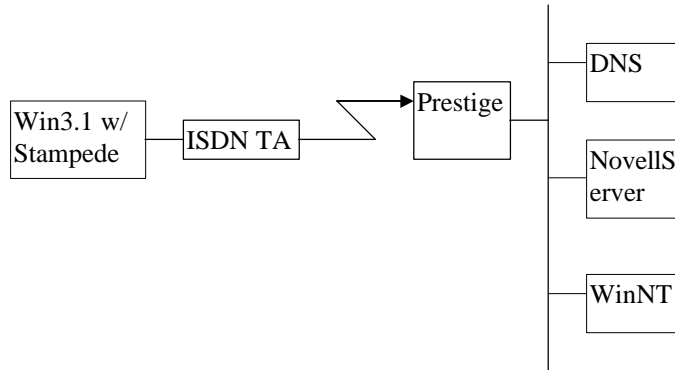


Last modified: 12-20-96

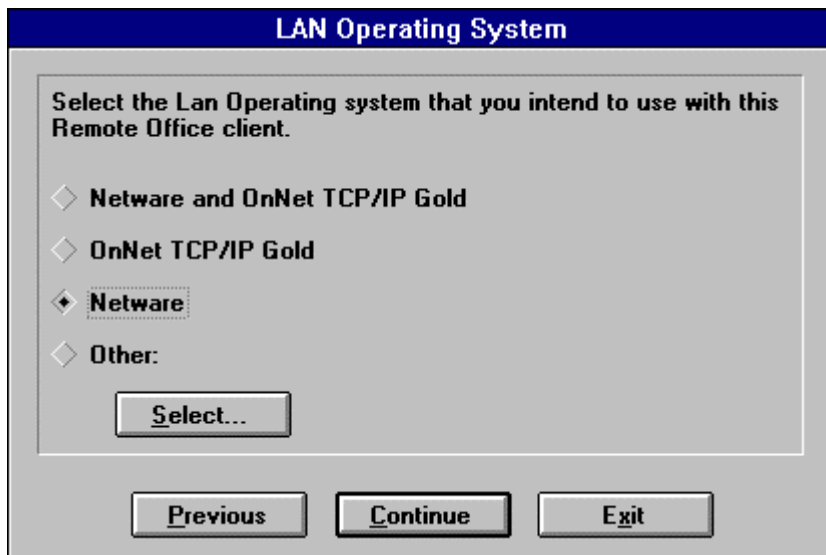
Setting up Stampede to Dial-In to Prestige

Description:

Windows 3.1 workstation using Stampede Remote Office with an ISDN TA to call a Prestige to route IP and/or IPX.



- I. Setup workstation
 1. Insert the Stampede setup disk and run the setup program. Follow the install procedure provided by Stampede.





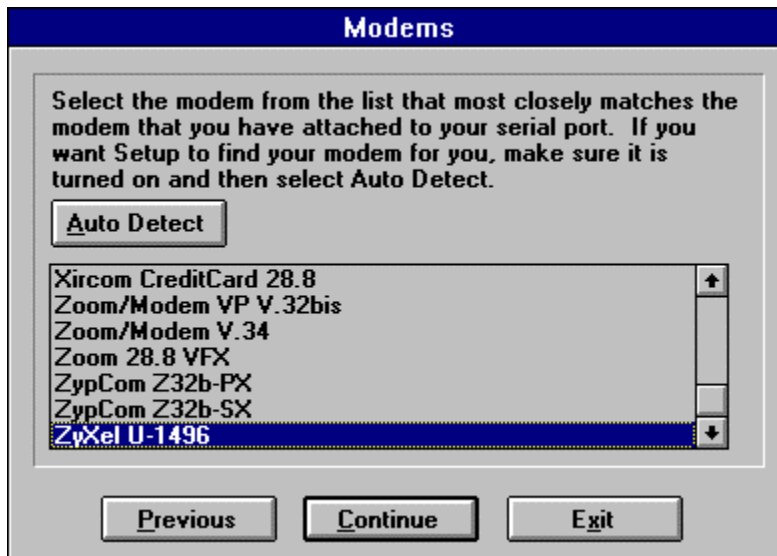
Network Authentication

The Network login process requires a preferred server name and username. You may also specify a password. If the password is not specified now, it will be asked for at login time.

Server Name: 1st_server

User Name: mknapp

Password: *****



Modems

Select the modem from the list that most closely matches the modem that you have attached to your serial port. If you want Setup to find your modem for you, make sure it is turned on and then select Auto Detect.

Xircom CreditCard 28.8
Zoom/Modem VP V.32bis
Zoom/Modem V.34
Zoom 28.8 VFX
ZypCom Z32b-PX
ZypCom Z32b-SX
ZyXel U-1496

2. At this menu you should select the terminal adapter you have on the remote site (the computer you are installing this to)

Communication Server Authentication

Enter your user name and password. Your user name and password must match the user name and password that have been set up on the communication server you want to connect to. Set the password to '*' if you want to be prompted for the password during a login. Enter the phone number that your modem should dial to connect to a comm server. The user name, the password, and the phone number will be stored as a phonebook record called "COMM_SERVER".

Phone Number

User Name

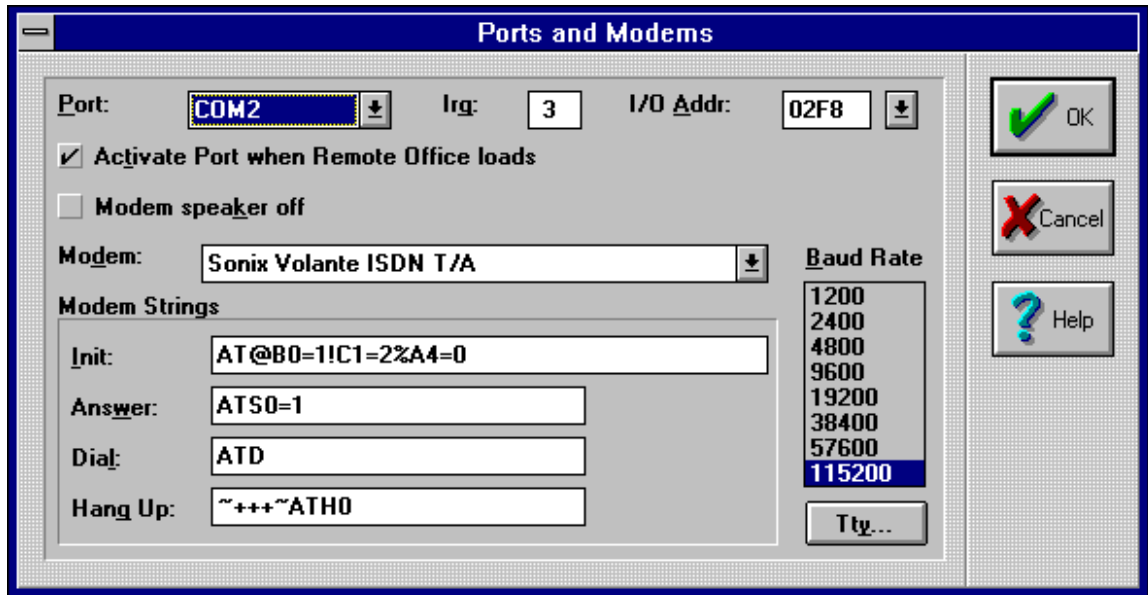
Password

Install will now copy the files needed.

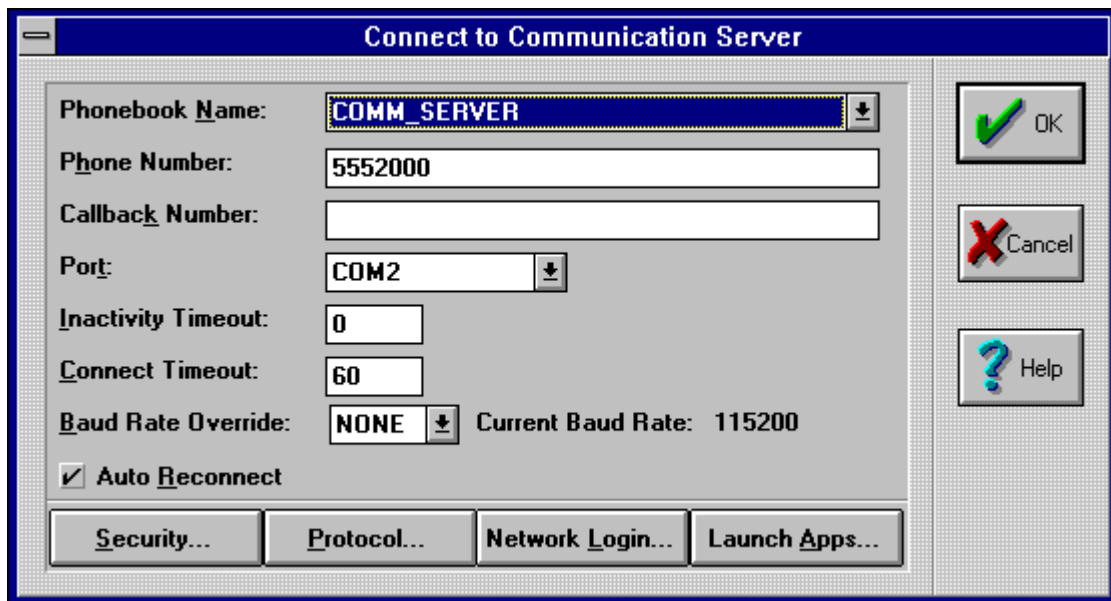
3. Upon reboot you should type "rostart" to start windows and to start remote office. You will see this screen. Select "Ports".



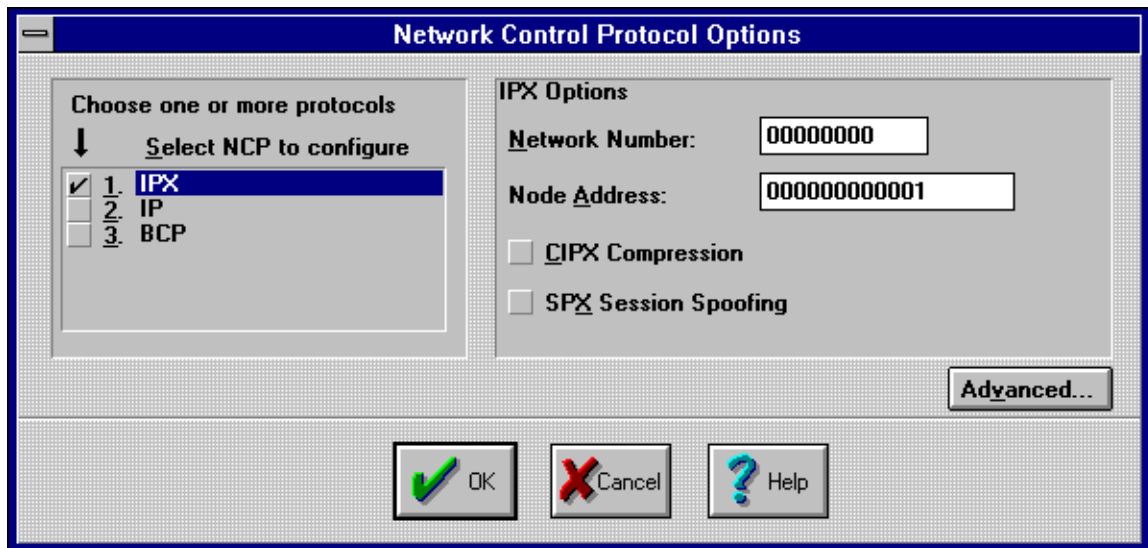
4. If your terminal adapter is not included in the preconfigured list, put your terminal adapter's init string in here. The Motorola Bitsurfer's init string, which is not included as an option, is seen above Click on "OK" when done to go back to the Remote Office Client menu.



5. From the Remote Office menu select "Connect" and then select "Protocol"



6. If using an IPX network, select IPX for the NCP. **Make sure to set the network number to 0.** This is very important because the prestige needs to set the network number when negotiating. Click "OK" when done to return to the Connection menu.



The image shows a Windows-style dialog box titled "Network Control Protocol Options". It is divided into two main sections. The left section, titled "Choose one or more protocols", contains a list box with three items: "1. IPX" (checked), "2. IP", and "3. BCP". Below the list box is the text "Select NCP to configure". The right section, titled "IPX Options", contains two text input fields: "Network Number:" with the value "00000000" and "Node Address:" with the value "000000000001". Below these fields are two unchecked checkboxes: "CIPX Compression" and "SPX Session Spoofing". At the bottom right of the dialog is an "Advanced..." button. At the bottom center are three buttons: "OK" (with a green checkmark icon), "Cancel" (with a red X icon), and "Help" (with a blue question mark icon).

7. From the connection menu select "OK". This will dial your call.