

Compaq D315 Business PC

Illustrated Parts Map

Microtower Chassis, AMD Processor



COMPAQ

© 2002 Compaq Computer Corporation.

Compaq and the Compaq logo are trademarks of Compaq Information Technologies Group, L.P.

All other product names mentioned herein may be trademarks of their respective companies.

Compaq shall not be liable for technical or editorial errors or omissions contained herein. The information in this document is provided "as is" without warranty of any kind and is subject to change without notice. The warranties for Compaq products are set forth in the express limited warranty statements accompanying such products. **Nothing herein should be construed as constituting an additional warranty.**

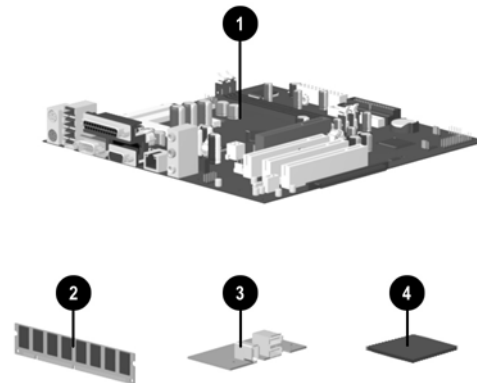
November 2002

March 2003

Document Part Number 295049-003



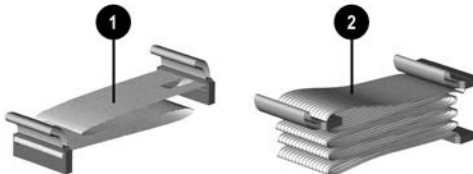
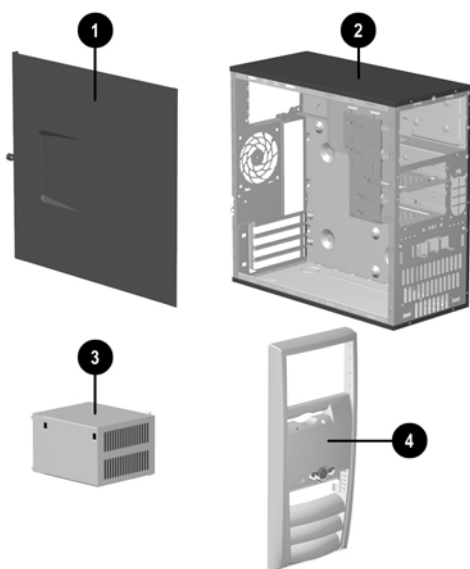
Spare Part Number 305583-001



Standard and Optional Boards

1	System board for AMD K7 processor	295743-001
Memory Modules		
2	128 MB RAM, DDR	285648-001
*	256 MB RAM, DDR	285649-001
*	512 MB RAM, DDR	285650-001
Front I/O assembly, includes:		
3	Front I/O board (292326-001)	314480-001
*	USB cable assembly (245151-003)	
PCI, 56 kbs Modems		
*	Lucent V92 modem	239411-001
AMD Athlon Processors with thermal grease and alcohol pad		
4	1.4 GHz/266	284340-001
*	1.467 GHz/266	284342-001
*	1.533 GHz/266	308922-001
*	1.6 GHz/266	308923-001
*	1.667 GHz/266	286733-001
*	1.733 GHz/266 (consumes less power)	293586-001
*	1.667 GHz/266 (consumes less power)	308924-001
*	1.8 GHz (consumes less power)	308925-001
*	2.0 GHz (consumes less power)	293587-001
Graphics Controllers		
*	nVIDIA NV11, 64 MB memory, ATX bracket	279777-001
*	nVIDIA NV17, 64 MB memory, TV	267526-001
*	AGP Digital Display (ADD) card with DVI output	279778-001
Network Interface Controller Cards		
*	NIC, 10/100 PCI, Intel PRO/100+	215774-001
*	NIC, Standard 10/100 PCI, WOL	157045-001

* Not shown



System Unit		
1	Access panel	not spared
2	Chassis	not spared
3	Power supply, PFC	277979-001
4	Front bezel assy spared as individual components:	
#	Front bezel frame	305641-001
#	Front bezel insert panel	305643-001
#	Front bezel I/O panel insert	305642-001

See Miscellaneous Parts for detailed illustrations

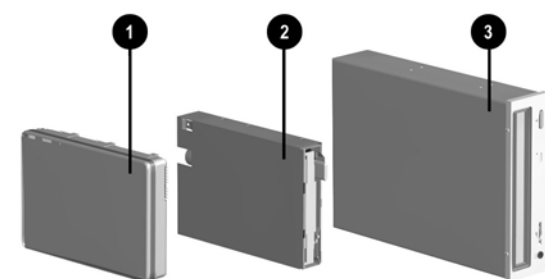
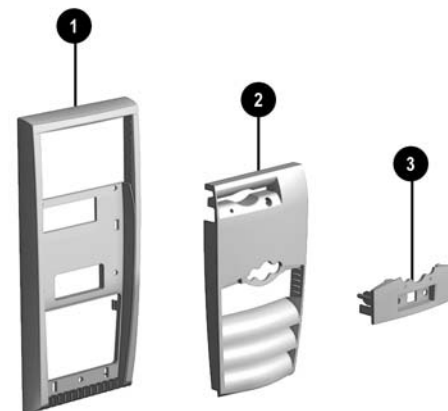
Cables

1	Diskette drive cable (143218-005)	257309-001
2	IDE UATA dual device, hard drive/CD-ROM data cable, 10" with pull tab (108950-037)	257047-001
*	IDE UATA dual device, hard drive/CD-ROM data cable, 14" (108950-038)	257048-001
*	CD-ROM audio cable (387527-001)	149806-001
*	Front I/O panel audio cable, 451 mm	255440-001
*	Power switch/LED cable assembly with switch holder	255941-001

* Not shown

Keyboards (not illustrated)

Easy Access Keyboard, PS/2 271122-xxx			
Arabic	-171	Portuguese	-131
Belgian	-181	Spanish	-071
Danish	-081	Swedish	-101
Finnish	-351	Swiss	-111
French	-051	Taiwanese	-AB1
Italian	-061	Thai	-281
International	-B31	United Kingdom	-031
Latin American Spanish	-161	U.S.	-001
Norwegian	-091	U.S.	-002
People's Republic of China	-AA1	U.S.	-004



Mass Storage Devices

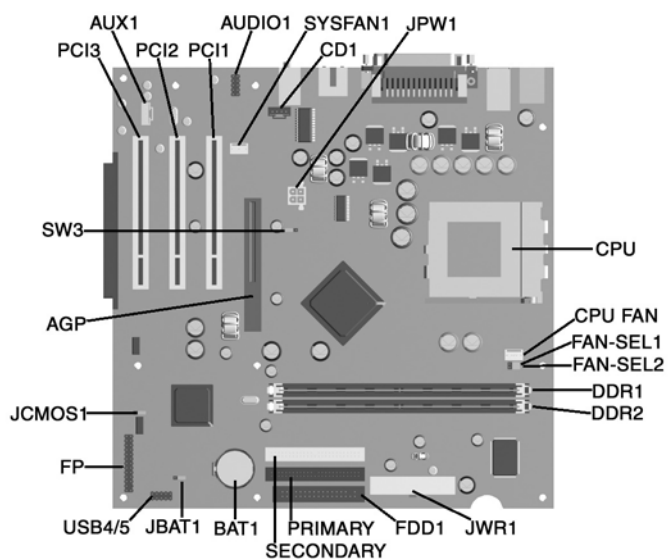
1	20 GB\5400 RPM Hard drive	249408-001
*	20 GB\7200 RPM Hard drive	260671-001
*	40 GB\5400 RPM Quiet hard drive	236921-001
*	40 GB\7200 RPM Hard drive	286692-001
*	60 GB\5400 RPM Hard drive	286693-001
*	80 GB\7200 RPM Hard drive	250185-001
2	Diskette drive	278644-001
3	R/RW DVD drive	250109-001
*	RW CD ROM drive 40/10/40X	286711-001
*	CDRW/DVD drive 16/10/40, 12X	281749-001
*	48X CD-ROM drive	232320-001
*	16X DVD drive	278647-001

* Not shown

Miscellaneous Parts

1	Front bezel frame	305641-001
2	Front bezel insert panel	305643-001
3	Front bezel I/O panel insert	305642-001
*	Chassis fan	257304-001
*	Heatsink with fan	284687-001
*	Mouse, 2-button with ratchet wheel	237241-001
*	Speaker	192518-001
*	DiskOnKey, 8 MB	249911-001
*	Return kit with buns	291318-001
*	Power switch holder	287077-001
Miscellaneous plastics kit, includes:		
*	Front bezel blank, carbon (166775-002)	257051-001
*	Power switch spring (166837-002) (N/A this product)	
*	Power switch/LED holder (245154-001) (N/A this product)	
*	LED holder (112589-001)	
*	Power switch cable clip (172948-001) (N/A this product)	

* Not shown



System Board Connectors and Jumpers

AGP	AGP graphics	FP	Power switch/LED
AUDIO1	Front I/O audio	JBAT1	Clear CMOS. 1, 2 = Std, 2, 3 = Clear
AUX1	Auxiliary audio	JCMOS1	Password clear. 1,2 = Std
BAT1	External battery	JPW1	+12 V Power for CPU
CD1	CD Audio	JWR1	Main power
CPU	Processor	PCI1, 2, 3	PCI card sockets
CPUFAN	Processor fan	PRIMARY	Primary IDE socket
DDR1, 2	Memory	SECONDARY	Secondary IDE socket
FAN-SEL1	Ground/fan control. Default = 2, 3	SW3	Set AUTO mode. 1, 2 = Std
FAN-SEL2	+2V/+5V power. Default = 2, 3	SYSFAN1	Chassis fan
FDD1	Diskette drive	USB4/5	Front I/O header

Interrupts

IRQ	System Resource	IRQ	System Resource
0	Reserved, interval timer	12	Onboard mouse port
1	Reserved, keyboard buffer full	13	Reserved, numeric data coprocessor
4	Serial Port (COM 1)	14	Primary IDE controller
5	PCI system management	15	Secondary IDE controller
6	Diskette drive controller	19	Integrated graphics (GPU)
8	Real-time clock	21	Integrated audio/USB host controller
9	ACPI-compliant system	22	Network interface card (NIC)

Clearing CMOS

1. Turn off the computer and any external devices, then disconnect the power cord from the power outlet.
2. Remove the access panel.
3. Locate the header labeled JBAT1. Move the jumper from pins 1 & 2 to pins 2 & 3.
4. Remove the jumper from JBAT1 pins 2 & 3 and place it on pins 1 & 2 (safe position).
5. Replace the access panel.
6. Connect the power cord to the power outlet.
7. Turn on the computer, allow it to start, and then turn the power off.

NOTE: Clearing CMOS clears all passwords.

Setting the Setup and Power-On Passwords

1. Turn off the computer and any external devices, then disconnect the power cord from the power outlet.
 2. Remove the access panel.
 3. Locate the header labeled JCMOS1.
 4. Move the jumper from pins 1 & 2 to pins 2 & 3.
 5. Replace the access panel.
 6. Connect the power cord to the power outlet. Turn on the system and allow it to start.
- NOTE: Placing the jumper on pins 2 & 3 clears the current passwords and disables the password features.
7. To re-enable the password features, repeat steps 1-3, then replace the jumper on pins 1 & 2 (safe position).
 8. Repeat steps 5-6, then establish new passwords.

NOTE: All passwords will be cleared.

Diagnostic LEDs

LED	Color	LED Activity	State/Message
Power	Green	On	(S0) Computer on
Power	Green	1 blink every 2 seconds	(S1) Normal Suspend Mode
Power	Green	1 blink every 2 seconds	(S3) Suspend to RAM
Power	Clear	Off	(S4) Suspend to Disk (if applicable)
Power	Clear	Off	(S5) Computer off
Power	Red/Green	Red when flashing ROM; Green 1 blink every second when user can restart	Boot block recovery w/Embedded Video
Power	Red	2 blinks every second	No memory installed
Power	Red	1 blink every second for 2 seconds, then off for 2 seconds	CPU thermal shutdown
Hard Drive	Green	Blinking	Hard drive activity