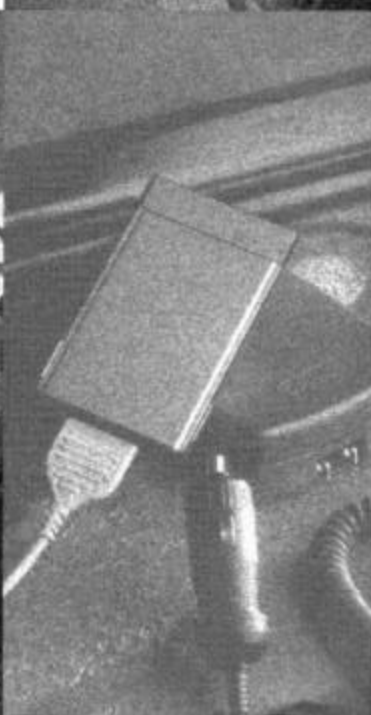


COMPAQ

GETTING STARTED

Compaq PC companion



Notice

The information in this guide is subject to change without notice.

COMPAQ COMPUTER CORPORATION SHALL NOT BE LIABLE FOR TECHNICAL OR EDITORIAL ERRORS OR OMISSIONS CONTAINED HEREIN; NOR FOR INCIDENTAL OR CONSEQUENTIAL DAMAGES RESULTING FROM THE FURNISHING, PERFORMANCE, OR USE OF THIS MATERIAL.

This guide contains information protected by copyright. No part of this guide may be photocopied or reproduced in any form without prior written consent from Compaq Computer Corporation.

© 1996 Compaq Computer Corporation.
All rights reserved. Printed in Japan.

Compaq, Deskpro, LTE, Contura, Presario, ProLinea
Registered U. S. Patent and Trademark Office.
Contura Registered in the Philippines Patent Office.

Armada is a trademark of Compaq Computer Corporation.

Microsoft, MS-DOS, and Windows are registered trademarks of Microsoft Corporation.

The software described in this guide is furnished under a license agreement or nondisclosure agreement. The software may be used or copied only in accordance with the terms of the agreement.

Product names mentioned herein may be trademarks and/or registered trademarks of their respective companies.

Getting Started

Compaq PC companion

First Edition (November 1996)
Part Number 266540-001

Compaq Computer Corporation

Contents

Introduction	3
Precautions	3
Battery Life Note	4
Documentation	5
How to Use the Documentation	5
Symbols Used in This Manual	5
Unpacking	6
Desktop Computer System Configuration	7
General Guide	8
Setting Up	10
Replacing Batteries	11
Replacing the Main Batteries	11
Replacing the Back-up Battery	14
Optional Battery Pack - NiMH	15
Resetting the C 120/C 140	16
Normal Reset	16
Memory Reset	16
To reset the C 120/C 140	16
Connecting the C120/CI40 to a Desktop Computer	17
Replacing a PC Card	18
Troubleshooting	20
Appendix A - Regulatory Notices	
Appendix B - Hardware Specifications	

Introduction

Congratulations on your selection of the C120/CI40. Before trying to use the C120/CI40, be sure to read the contents of this manual. Keep this manual in a safe place for future reference.

Important!

Memory contents can be corrupted or even lost due to mishaps caused by malfunction, repair procedures, or battery replacement. Be sure to keep separate back-up copies of all important data that you store in C120/CI40 memory. The C I 20/C 140 can be connected to a desktop computer for uploading and downloading of data. Once data is uploaded to a desktop computer, you can save it to diskette, or some other external storage medium. Be sure to keep separate back-up copies of all important data,

Precautions

The C120/CI40 is a precision digital instrument. Be sure to observe the following important precautions in order to prevent malfunction that can result in improper operation or corruption of data in memory.

- Never continue to use the C120/CI40 when battery power is low. Low battery power can cause corruption or loss of data stored in memory. Replace batteries as soon as possible after low power is indicated.
- Do not leave low batteries in the C 120/C 140. Batteries that have low power can leak, causing damage to and malfunction of the C120/CI40.
- Avoid using the C120/CI40 in areas subjected to the conditions listed below. Such conditions can create the danger of fire or personal injury as well as damage to and malfunction of the C 120/C 140.
 - Electrostatic charge
 - Extreme heat
 - Very high humidity
 - Sudden temperature change
 - Large amounts of dust

Also note the following important precautions. Failure to do so can create the danger of fire, personal injury, as well as damage to and malfunction of the C120/C140. Should any of these events occur, turn off the C120/C140 immediately and contact your Compaq authorized dealer, reseller, or service provider, or call 1-800-345-1518.

- Never drop the C120/C140, allow it to be hit by other objects or otherwise subject it to strong impact.
- Never place heavy objects on top of the C120/C140.
- Never disassemble the C120/C140.
- Never insert foreign objects into the connectors or slots of the C120/C140.
- Never allow water or other liquids to come into direct contact with the C120/C140.
- Always use the stylus that comes with the C120/C140 when operating its touch screen or reset button.
- Never use paint thinner, benzene, or other volatile agents to clean the C120/C140. Instead, use a soft cloth moistened with a solution of water and a mild neutral detergent. Wring out all excess liquid from the cloth before wiping the C120/C140.

Battery Life Note

Your Compaq PC companion is a very low power device, and can run up to 20 hours on two AA alkaline batteries under ideal conditions. Battery life can be reduced dramatically with extended use of the backlight feature, or when used with options such as standard PC Card modems.

Documentation

The C120/CI40 comes with the following documentation.

Getting Started Manual (this manual)

User's Guide

How to Use the Documentation

Read this manual first. It covers how to set up the C 20/C 140 and load batteries to power it.

What should I read next?

Read the User's Guide, which explains how to use the C 20/C 140.

What should I do if the C120/CI40 does not do what I want it to? See the Troubleshooting guide on page 20 of this manual.

Where can I find information about options and connecting the C120/CI40 to a desktop computer?

See the pages of this manual noted below.

- Connecting to a desktop computer page 17
- Replacing a PC Card page 18
- For option information, refer to the options flyer included with your PC companion packaging.

Symbols Used in This Manual

Important! 

This symbol indicates important information about a procedure that can result in problems if not performed correctly. Be sure to read this information carefully.

Page 

This symbol indicates a page where you can find more information or related information.

Unpacking

Check to make sure all of the following items are included with your C120/CI40 when you unpack it.

- 120/CI40 Unit

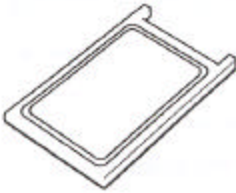


- Stylus



The stylus is inserted into the C 20/C 140 unit.

- Dummy Card



- Auto-Sync Cable

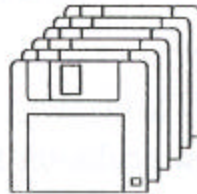


The dummy card is inserted in the C1 20/C 140 unit.

- CD-ROM

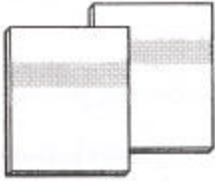


- Floppy Diskettes



The CD-ROM and the floppy diskettes contain an installer, software applications, and software application documentation.

- Manuals
(Getting Started Manual, User's Guide)



- AA-size Alkaline Batteries
(two)



- Options Flyer
- Owner Registration Card
- Warranty Card
- Diskette Fulfillment Card

Desktop Computer System Configuration

You should check to make sure that the configuration of your desktop computer is as described below to support the installer and the software applications contained on the CD-ROM and the floppy diskette.

Minimum Requirements:

Desktop computer with a 486/33DX or higher processor (Pentium P90 recommended)

Microsoft Windows 95 or later operating system (will not run on earlier versions of Windows or Windows NT)

8 MB of memory (12 MB recommended)

10 - 20 MB of available hard disk space (actual requirements will vary based on features you choose to install and current system configuration)

Available 9 or 25 pin Communications Port (adapter required for 25 pin communication port)

One CD-ROM drive (3.5" high-density disks provided on request)*

VGA or higher resolution graphics card (SVGA 256-color recommended)

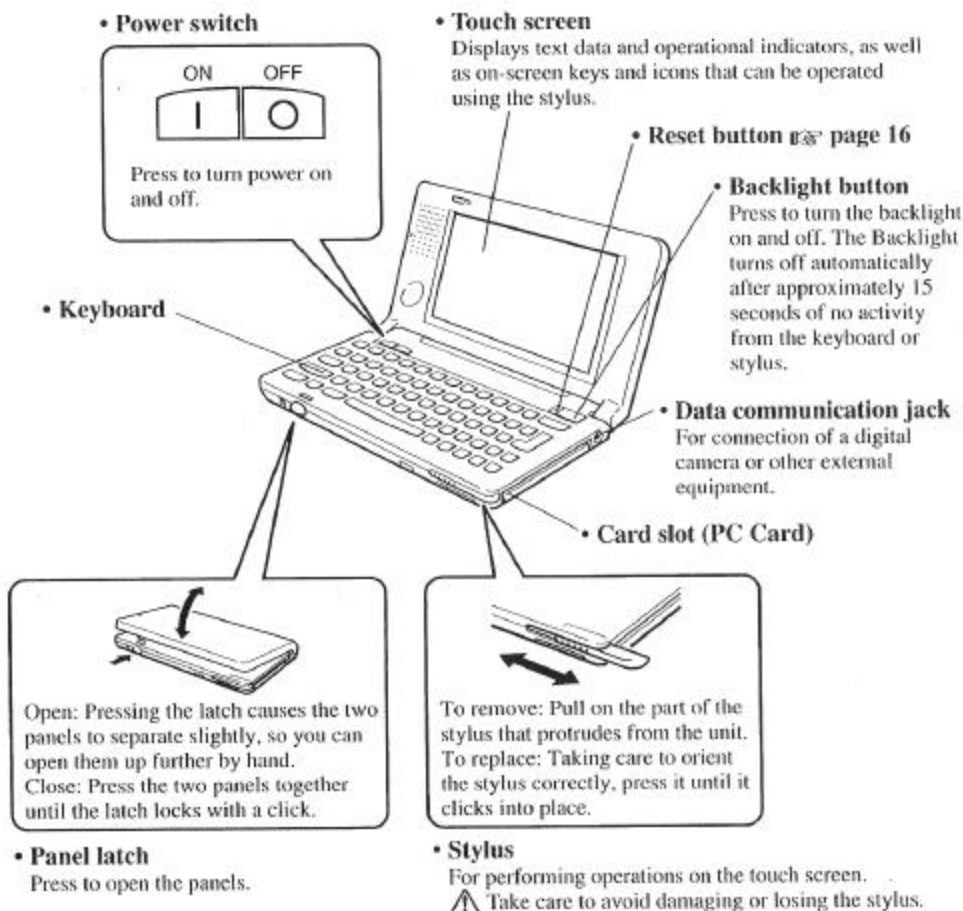
Microsoft Mouse or compatible pointing device

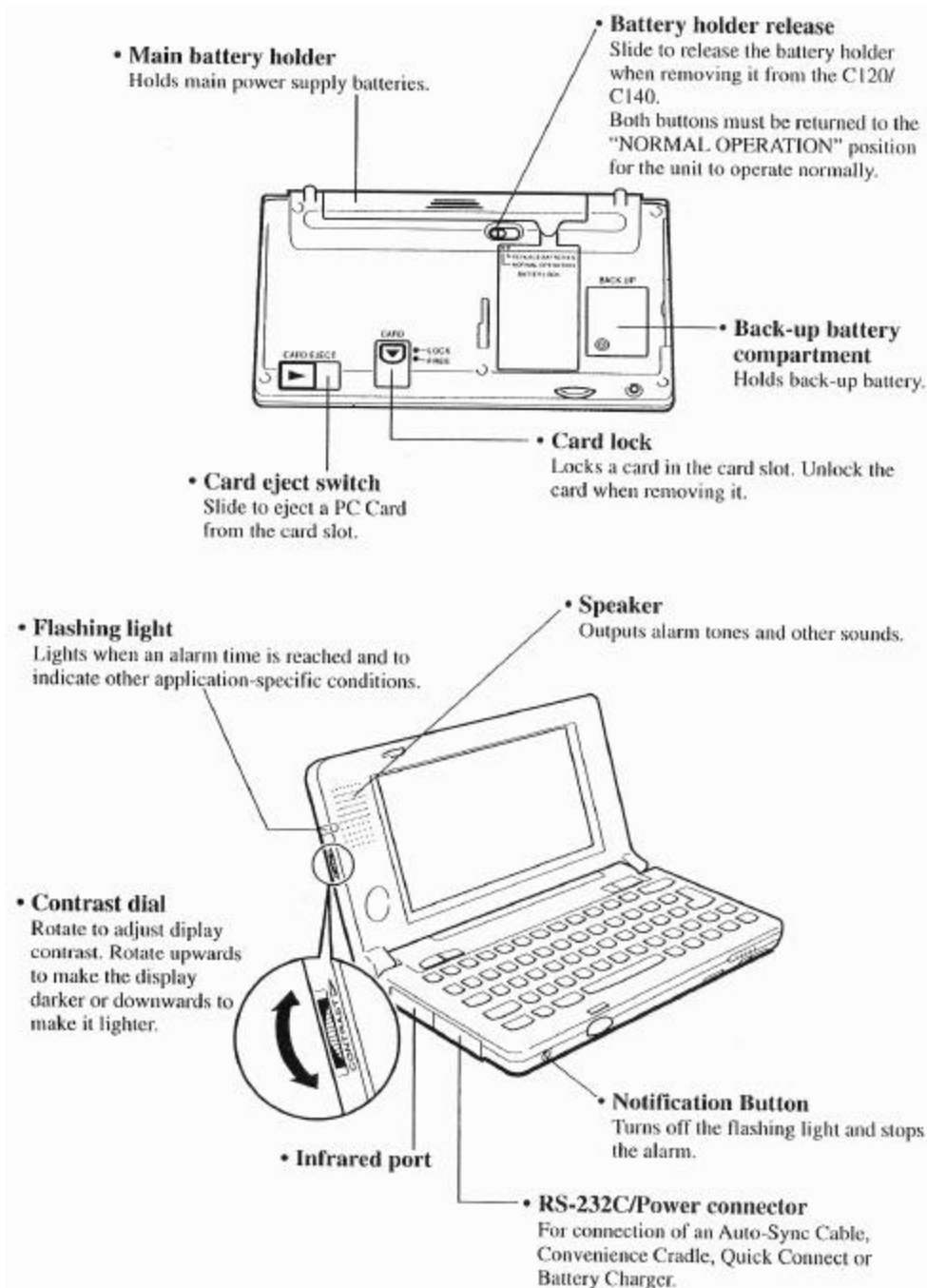
Options:

Audio card/speakers for sound

If your desktop computer system does not have a CD-ROM drive, you can order optional diskettes to replace the CD-ROM. Complete the fulfillment card that came in the box.

General Guide





Setting Up

Use the following procedure to set up the C 120/C 140 before using it for the first time.

1 Load batteries.

Load the two batteries that come with the C120/CI40 into its main battery holder.

After loading the main batteries, pull the insulating tape out from under the back-up battery compartment cover:

2 Wait for about five seconds, and then press the power switch to turn on power.

3 Adjust the contrast.

- The contrast dial is set to its darkest setting when shipped from the factory. Rotate the contrast dial until the figures on the screen become easy to see.

4 Set up the C120/C140.

The welcome wizard appears on the screen after the reset routine is complete. Perform the following procedures in accordance with the guidance messages that appear on the screen.

Touch screen calibration

Time and date setting

Personal data input

Other settings

If the welcome wizard does not appear on the screen at this point, first check to make sure that the main batteries are loaded correctly. Check to make sure that their positive (+) and (-) ends are facing correctly. After correcting the problem, use the stylus to press the RESET button.

Press the RESET button causes power to turn off. Press the power switch to turn it back on, and continue with the above procedure from step 3.

Replacing Batteries

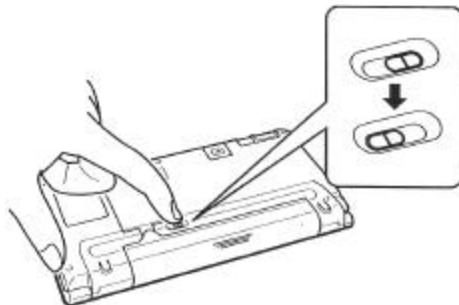
The C120/CI40 has a dual power supply that consists of main batteries and a back-up Battery. Be sure to load the main batteries before using the C 120/C 140 for the first time after purchasing it. Also, replace batteries as soon as possible after they start to lose power.

Important! ⚠

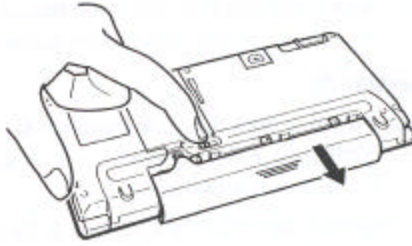
- Never remove both the main batteries and the back-up battery from the C120/CI40 at the same time. If you do, data stored in memory can be corrupted or lost entirely.
- Whenever the main batteries and the back-up battery both require replacement, be sure to replace the main batteries first, before replacing the back-up battery.
- Use two AA-size alkaline batteries or the optional Battery Pack - NiMH for the main power supply and a CR2032 lithium battery for the back-up power supply. Never use any other types of batteries with the C 120/C 140.
- Be sure to keep track of the battery life of both the main batteries and the back-up battery. Refer to the User's Guide for information. If the batteries being used for both power supplies are low at the same time, data stored in memory can be corrupted or lost entirely.

Replacing the Main Batteries

1. Make sure the C120/C140 is turned off.
If the C120/CI40 is on, press the power switch to turn it off.
2. Close the C I 20/C 140 and turn it over.
3. Slide and hold the battery holder release towards "REPLACE BATTERIES" and then carefully slide the main battery holder from the C120/C140.

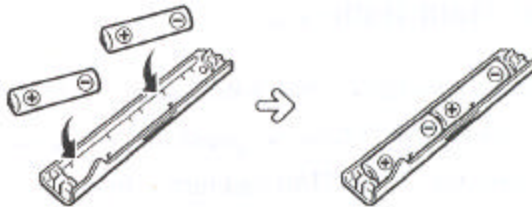


Note that the main battery holder release actually consists of two separate buttons. Slide and hold both of them towards "REPLACE BATTERIES".

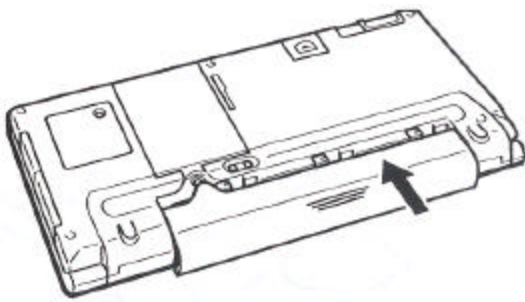


Grasp the center of the main battery holder when you slide it from the C120/C140.

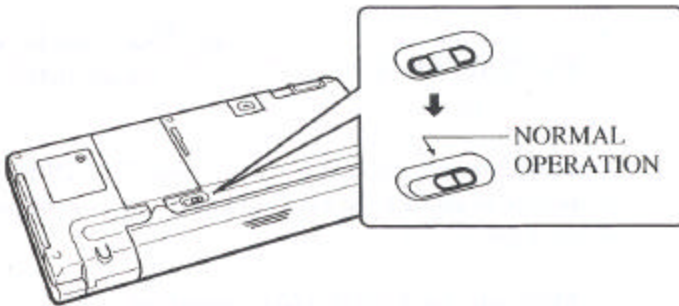
- 4 Remove both of the old batteries from the main battery holder, and load two new ones.
When loading new batteries, make sure that their positive (+) and negative (-) ends are facing correctly.



- 5 Insert the main battery holder into the C120/CI40 until the holder is fully seated.

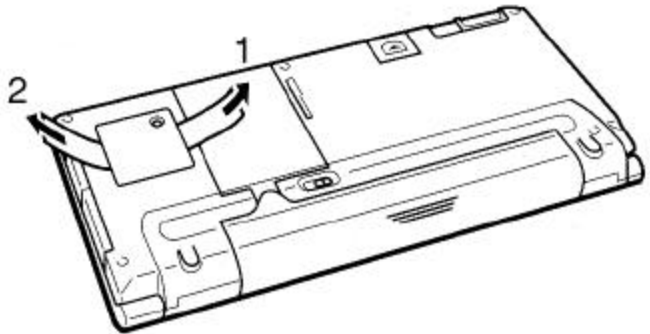


- Slide the release (both buttons) of the main battery holder towards "NORMAL OPERATION" to lock the main battery holder release.



- If you are loading batteries into the C120/CI40 for the first time after purchasing it, pull the insulating tape out from under the back-up battery compartment cover.

Do not pull the tape out until the main batteries are loaded.



- * Pull out tape 1 first, then tape 2.

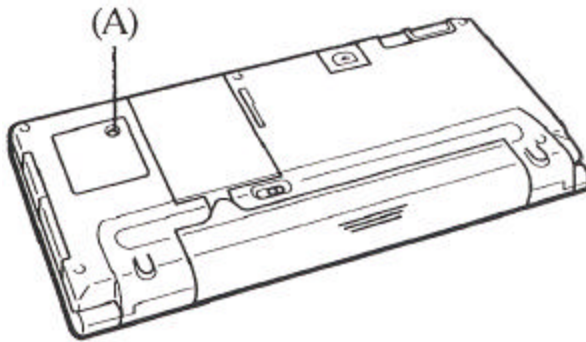
Replacing the Back-up Battery

Important!

- Never remove both the main batteries and the back-up battery from the C120/CI40 at the same time. If you do, data stored in memory can be corrupted or lost entirely.

A back-up battery comes installed in the C120/CI40 when you purchase it. Be sure to replace the back-up battery as soon as possible after it shows signs of low power.

- 1 Make sure the C120/CI40 is turned off.
If the C120/CI40 is on, press the power switch to turn it off.
- 2 Close the C120/CI40 and turn it over.
- 3 Remove screw A and then remove the back-up battery compartment cover.



- 4 Remove the old battery.
- 5 Wipe the surfaces of the new battery with a soft cloth, and then load it into the back-up battery compartment with the + side facing up (so you can see it).
- 6 Replace the back-up battery compartment cover and secure it in place with its screw.

Battery Precautions

Improper handling of batteries can cause fire or personal injury, as well as damage to and malfunction of the C 120/C 140. Be sure to observe the following important precautions.

- Always make sure the polarity (+ and - directions) of a battery is correct when you load it into the C120/C140.
- Never mix old batteries with new ones.
- Never mix batteries of different types.
- Use only the types of batteries specified in this manual.

Optional Battery Pack - NiMH

Main power can also be supplied to the C120/C140 using the Battery Pack - NiMH that is available as an option. Charging of the optional Battery Pack - NiMH is performed using an optional Battery Charger.

Resetting the C120/C140

You should reset the C1 20/C 140 whenever you suspect some external abnormality has caused it to malfunction.

Whenever you perform the reset procedure described below, the C120/ C140 checks whether memory contents are corrupted, and then automatically performs either normal reset or memory reset.

Normal Reset

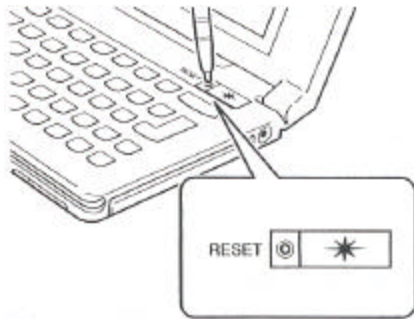
Performing the reset operation when the C1 20/C 140 is hung up or experiencing other operational problems but no corruption of memory contents resets the C120/C140 without affecting memory contents or settings. A normal reset causes the Desktop to appear on the screen.

Memory Reset


Performing the reset operation after memory data has been corrupted clears memory contents and settings, and causes the welcome wizard screen to appear. Set up the C120/C140 in accordance with the on-screen guidance.

To reset the C120/C140

- 1 Press the power switch to turn on the C120/C140.
- 2 Use the stylus to press the reset button.



This causes the C120/C140 to turn off.

 Always use the stylus that comes with the C120/C140 whenever performing any touch screen operation. Using any other object can result in damage to and malfunction of the C120/C140.

- 3 Turn the C120/C140 back on to resume the reset operation.

Connecting the C120/CI40 to a Desktop Computer

Use the following procedure to connect the C120/CI40 to a desktop computer.

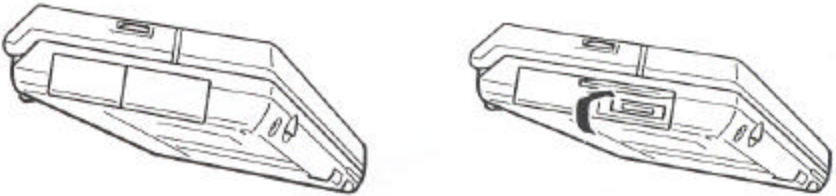
Requirements

Installation CD-ROM (supplied with C120/CI40)

Auto-Sync Cable (supplied with C120/C140)

Desktop computer (see page 7 for minimum requirements)

- 1 Open the RS-232C connector cover of the C120/CI40.
Pull out the bottom of the cover and swing it up. Next slide the cover into the side of the C120/CI40.



- 2 Use the Auto-Sync Cable to connect the C120/CI40 to your desktop Computer.

The Auto-Sync Cable has a 16-pin connector on one end for connection to the C120/CI40, and a 9-pin connector on the other end for connection to your desktop computer.



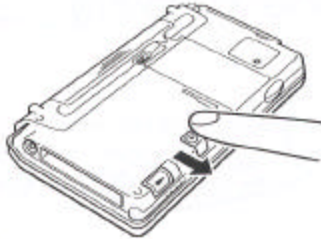
Replacing a PC Card

The C1 20/C 140 comes equipped with a card slot that supports PC Cards.

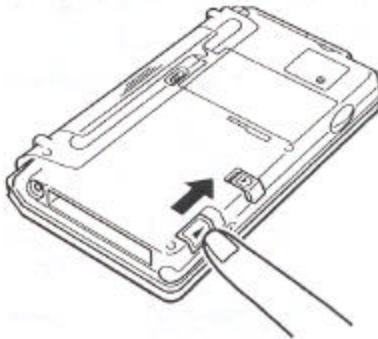
- Be sure to keep the dummy card that comes with the C120/CI40 inserted in the card slot whenever you are not using a PC Card.

To replace a PC Card, complete the following steps.

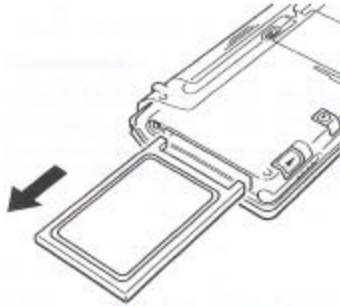
- 1** Close the C120/CI40 and turn it over.
- 2** Release the card lock.
Slide the lock to the FREE position.



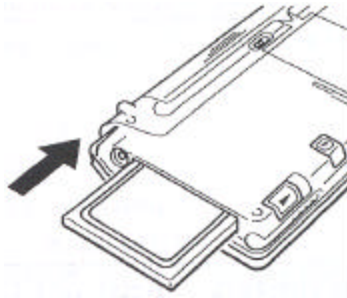
- 3** Slide the card eject switch to the side to eject the card currently loaded in the card slot.



- 4 Remove the card from the card slot.



- 5 Insert the card you want to use into the card slot.
Push the card into the slot as far as it will go.






⚠ Never try to insert a card into the card slot while the card lock is in the LOCK position.


⚠ Take care that the card is oriented correctly when you insert it into the card slot. The top of the card should be facing in the same direction as the top of the C120/C140. If the card is oriented incorrectly, it will not slide all the way into the card slot. Never try to force a card if it stops part way.

- 6 Lock the card in the slot.
Slide the card lock to the LOCK position.

Troubleshooting

● Nothing appears on the display when power is turned on.		
Possible Cause	Recommended Action	Page
Display contrast setting Is too light.	Adjust display contrast to a darker setting.	 Page 9
Main batteries are Dead.	Replace batteries.	 Page 11

● Screen is completely black.		
Possible Cause	Recommended Action	Page
Display contrast setting Is too dark.	Adjust display contrast to a lighter setting.	 Page 9

● Nothing happens when the touch screen is pressed.		
Possible Cause	Recommended Action	Page
Touch screen is Damaged.	Contact your nearest Compaq authorized dealer, reseller, or service provider, or call 1-800-345-1518.	
Electrostatic charge is interfering with operation.	Reset the C 120/C 140.	 Page 16

Federal Communications Commission Notice

This equipment has been tested and found to comply with the limits for a Class B digital device, pursuant to Part 15 of the FCC Rules. These limits are designed to provide reasonable protection against harmful interference in a residential installation. This equipment generates, uses, and can radiate radio frequency energy and, if not installed and used in accordance with the instructions, may cause harmful interference to radio communications. However, there is no guarantee that interference will not occur in a particular installation. If this equipment does cause harmful interference to radio or television reception, which can be determined by turning the equipment off and on, the user is encouraged to try to correct the interference by one or more of the following measures:

- Reorient or relocate the receiving antenna.
- Increase the separation between the equipment and receiver.
- Connect the equipment into an outlet on a circuit different from that to which the receiver is connected.
- Consult the dealer or an experienced radio or television technician for help.

Modifications

The FCC requires the user to be notified that any changes or modifications made to this device that are not expressly approved by Compaq Computer Corporation may void the user's authority to operate the equipment.

Cables

Connections to this device must be made with shielded cables with metallic RFI/EMI connector hoods to maintain compliance with FCC Rules and Regulations.

Airline Travel Notice

Use of electronic equipment aboard commercial aircraft is at the discretion of the airline.

Battery Notice



WARNING: This computer contains an internal lithium backup battery. There is a risk of explosion and injury if the battery is incorrectly replaced or improperly handled. Do not attempt to recharge, disassemble, immerse in water, or dispose of it in fire. Replace the backup battery with the Compaq spare part for this computer.

This computer may contain a nickel metal hydride battery. There is a risk of fire and chemical burn if the battery pack is handled improperly. Do not disassemble, crush, puncture, short external contacts, dispose in water or fire, or expose it to temperatures higher than 140°F (60°C).

Hardware Specifications

Model: C120/C140

Display: 480 x 240 dots/0.24 dot pitch

FSTN LCD

4 grayscale monochrome

CPU: SH3

Memory RAM: (C120) 2MB

(C140) 4 MB

ROM: 4 MB

Speaker: Sound

Interfaces: RS-232C: 115.2k BPS

Data communication jack

PC Card slot

Infrared port (IrDA Standard)

Power Supply:

Main: Two AA-size alkaline batteries; Battery Pack - NiMH; AC Adapter

Back-up: One CR2032 lithium battery

Power Consumption: 3.8W

Battery Life:

Main: Two AA-size alkaline batteries: up to 20 hours (in Word, continuous cycle of one-minute input and 10-minutes input standby) Battery Pack -

NiMH: up to 14 hours (in Word, continuous cycle of one-minute input and 10-minutes input standby)

* Main battery life is shortened considerably by use of a modem card or any other high power consumption PC Card.

Back-up: 5 years (when main battery is replaced immediately after appearance of low battery message)

1 month (when unit is left without a main battery)

Operating Temperature: 32°F to 104°F (0°C to 40°C)

Dimensions (excluding projections)

Unfolded: 1/8" H x 67/8" W x 61/8" D (15.0 H x 175.0 W x 175.0 D mm) Folded: 1"

H x 67/8" W x 31/8" D (26.5 H x 175.0 W x 92.0 D mm)

Weight: 13.4 oz (380g) including batteries