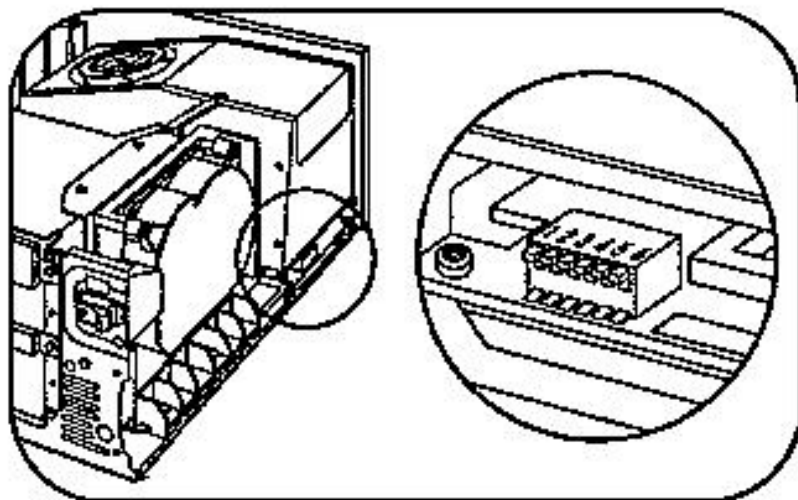
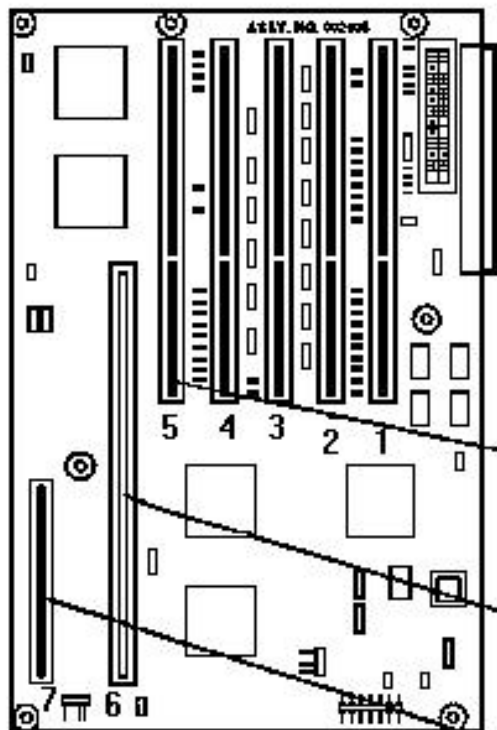


Deskpro M

[Eisa Configuration Notes](#)
[Service Considerations](#)

Compaq Personal Computer EISA Bus Board



Slot - 5
Video

Slot - 6
System Processor

Slot - 7
Memory Expansion

SWITCH SETTINGS ON I/O BOARD Function/Description

1. Reserved
2. Lock EISA Configuration
On = Yes ● Off = No
3. Set Diskette Drive to Read Only
On = Yes ● Off = No
4. Override EISA Configuration
Diskette Boot Control
On = Yes ● Off = No
5. Clear Power - On Password
On = Yes ● Off = No
6. Erase EISA Configuration
On = Yes ● Off = No

● = Denotes factory settings

CAUTION

Do not operate the computer
with the system unit
cover removed.

SWITCH SETTINGS ON PROCESSOR BOARD (SLOT #6)

Switch Position	486SX	487SX ODP486SX ODP486DX	486DX 486DX2 ODPR486DX
1	OFF	OFF	ON
2	OFF	ON	OFF
3	OFF	ON	ON
4 (25MHZ)*	ON	ON	ON
4 (33MHZ)*	OFF	OFF	OFF

* IGNORE IF PROCESSOR BOARD HAS 3 POSITION SWITCH.

129162-003

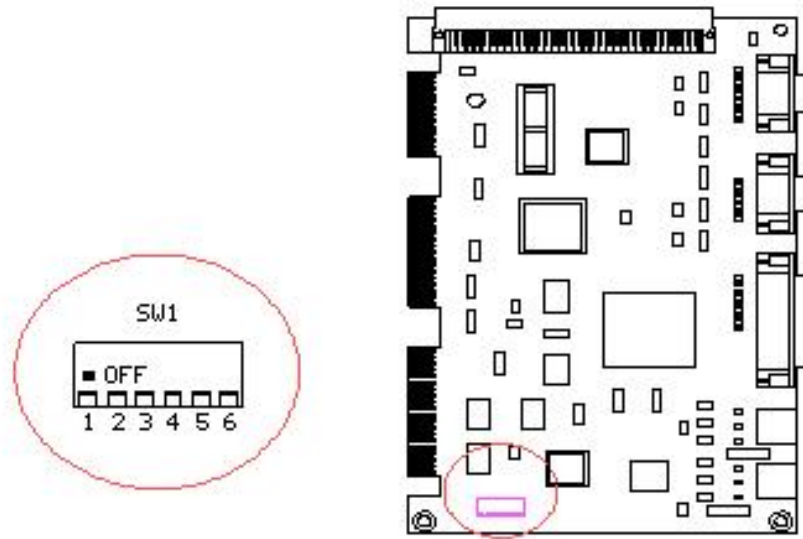
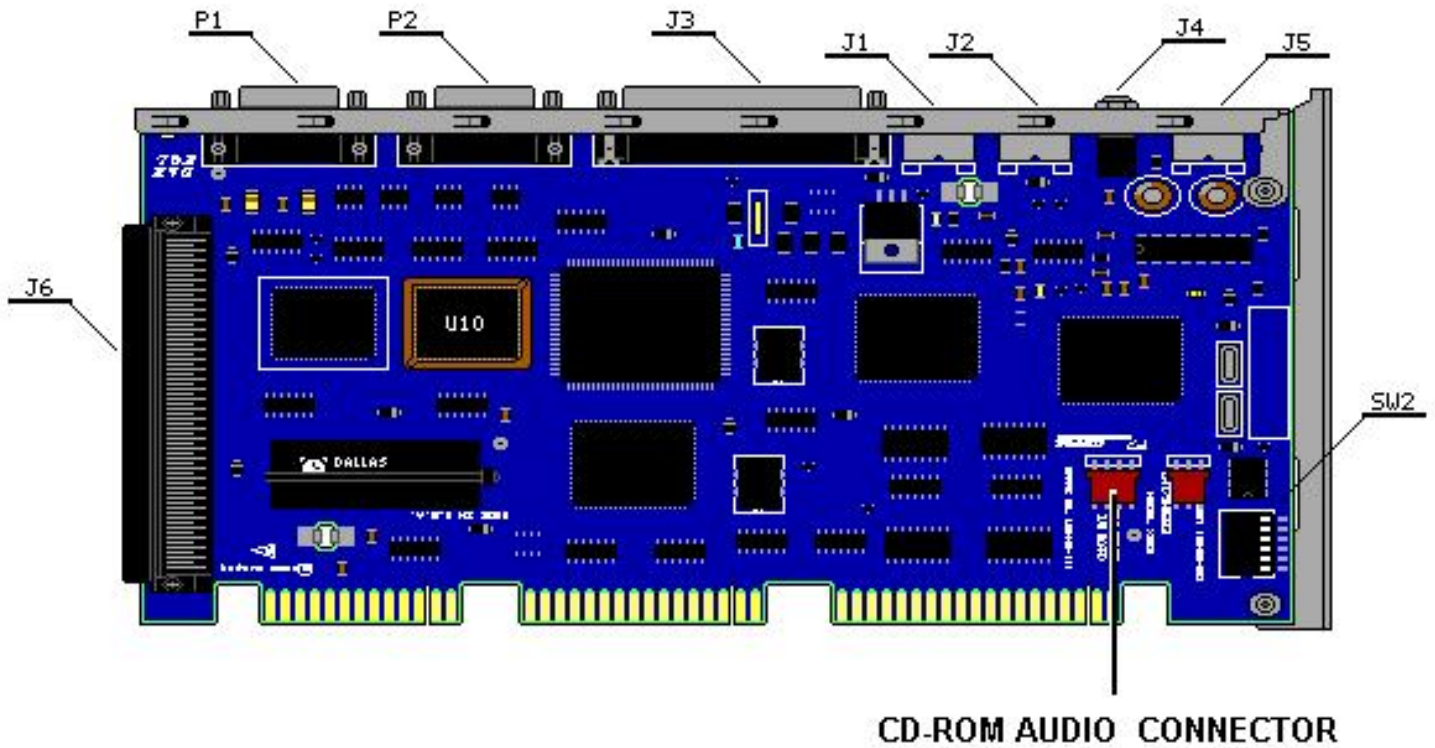


Figure 3-2. Switch Location on the I/O Board

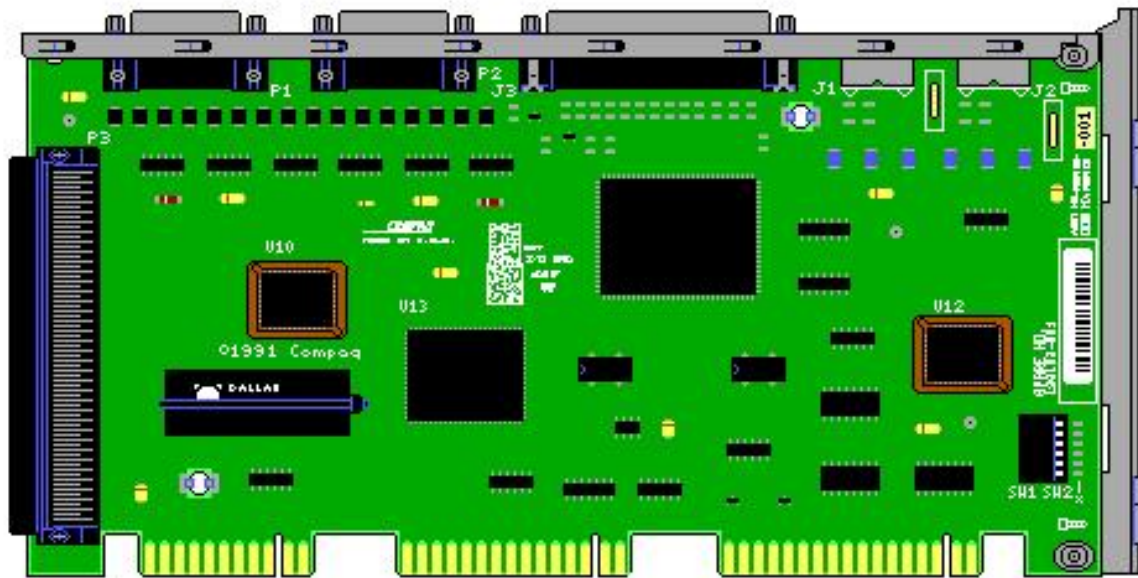


Audio I/O Board (Assy No. 002428-001)

ASSY NO. 002304-001



Assembly Number 002304-001



I/O Board (Assy No. 002002)

EISA Configuration PC's

- **Deskpro XL**
- **Deskpro M**
- **Deskpro L**
- **Deskpro 486/25**
- **Deskpro 386/33**

To clear CMOS on a EISA computer you must turn the computer off. Put the switch or jumper in the "Erase EISA Configuration - Enable" setting. Turn on the computer. Turn the computer off as soon as the computer starts to count the memory. Put the switch or jumper in the "Erase EISA Configuration - Disable" setting. Power on the computer and run the EISA utility.

All EISA options offered by Compaq have a corresponding CFG files on the EISA config disk. Because of the space constraint on the diskette, the later versions of the EISA config do not contain some of the old CFG files. You may have to get the EU an older version of the EISA config to support older HW.

A good source for 3rd party CFG files is [MCSDALLAS](#).

Deskpro M

- Video - NLB [Advanced VGA on select 386 and 486 units.](#)
- Video - NLB [QVision 1024/E on select 386 and 486 units.](#)
- Video - NLB [1280/E on P5 units.](#)
- (1) IDE HD controller.
- (2) Serial.
- Bi-Directional parallel.
- [Enhanced Business Audio](#) integrated on the I/O board on all but the earliest models.
- Memory - [72pin, gold, parity SIMM's.](#)
- All EISA options offered by Compaq have a corresponding CFG files on the EISA config disk. Because of the space constraint on the diskette, the later versions of the EISA config do not contain some of the old CFG files. You may have to get the EU an older version of the EISA config to support older HW.
- TechInfo Config Codes [All units](#)
- [QRG Vol 1](#)

QVision/QVision 1280/ Advanced VGA

Implementation: Deskpro M, I, XE, XL; L; Contura 386 & 486, LTE Lite, Portable 486, SystemPro,LT, XL, Deskpro and ProLinea PCI-Enhanced models

Click on a SoftPaq filename to visit the Compaq Online Site.

	SOFTPAQ	VERSION
AutoCad Drivers	SP1080	2.21
OS/2 2.X & 3.0 Drivers	SP2747	2.39
VESA Drivers	SP1728	1.13
Windows 3.1 Drivers	SP1734	7.70
Windows NT 4.0 Drivers	SP2732	3.00 H
Windows NT 3.5 Drivers	SP1322	2.30 A
Windows NT 3.51	SP2751	2.52 H
Windows 95 Drivers	SP2894	1.52 B

Compaq QVision 1024/E Specifications

Implementation	Deskpro/M Family (except 5/60M and 5/66M), Portable 486 Family, Prosignia, Systempro, Proliant
<u>Video Drivers</u>	
Controller	QVision 1024/E
Chipset 1st	Victory VCR
Chipset 2nd Generation	V32
RAMDAC	BT 484
Bus/Slot	EISA
Data Path	32 Bit
Memory	
Type	VRAM
Speed	70ns
Standard 1st Generation	1MB
Standard 2st Generation	2MB
Optional	None
Controller Clock Speed	42 MHz
Max Vertical Refresh Rate	75 Hz at 640 x 480
Max Horizontal Scan Rate	57.5KHz at 1024x768
Video Feature Connectors	
<u>VGA Passthru Connector</u>	Yes

Max Resolutions / Colors with 2MB Video Memory

Resolution	Colors
1024x768	65,536
800x600	65,536
640x480	16.7M

Max Resolutions / Colors with 1MB Video Memory

Resolution	Colors
1024x768	256
800x600	65,536
640x480	16.7M

V32 ASIC Specifications

Engine Accelerations	
BitBLT	Yes
Line Draw	Yes
Polygon	No
3D	No
Supported Buses	ISA, EISA
Maximum Resolution	1280 x 1024

VGA FEATURE CONNECTOR (FC) - (VGA Pass Through Connector)

Features

- 8 - Bit data transfer
- 640 x 480 max resolution
- 256 max colors
- Single attachment (i.e. one video card only can connect to the graphics system)

Benefits

- Provides an industry standard interface between video and graphics
- Enables video in a window

The VGA pass through connector is most commonly used on consumer and education market Pcs. It is used to pass through video from a TV tuner card or NTSC/PAL (VCR) type application.

The VGA connector is not useful beyond 256 colors at 640 x 480 resolution because of limited bandwidth.

The VGA Feature Connector allows the VGA signals to be accessed by third-party high-resolution graphics or video boards. This VGA pass-through feature also allows the use of a single monitor when using high-resolution graphics boards that are not VGA compatible.

This connection is physically a 26 pin connection, with pinouts defined by VESA. This connector provides a more industry standardized hardware solution for pass thru capability. The VFC interface only supports VGA graphics pass thru capabilities.

The VFC interface is enabled only in VGA modes because the feature connector, by definition from VESA, sits on the 8 bit wide VGA data path running between the Video ASIC and the Video DAC.

Compaq QVision 1280/E Specifications

Implementation	Deskpro XL 450, 466, 560, 566, 575, 590 and 5100, Deskpro/M Family (except 5/60M and 5/66M), Prosignia, Proliant, Portable 486 Family
<u>Video Drivers</u>	
Controller	QVision 1280e
Chipset	V32
Bus/Slot Type	EISA
RAMDAC	BT 485
Memory Type	VRAM
Standard	2 MB standard
Optional	None
Speed	70ns
Max Memory via Upgrade	2 MB
Data Path	32-Bit
Controller Clock Speed	42 MHz
Video Features	
<u>VGA Passthru Connector</u>	Yes
HW Acceleration	No
Scaling	No

Max Resolutions, Colors & Refresh Rate w/2MBs VRAM

Resolution	Color	Refresh Rate
1280 x 1024	16 colors	76Hz
1024 x 768	256 colors	76Hz
800 x 600	64K colors	75Hz
640 x 480	16.7 million colors	75Hz
Max Horizontal Scan Rate		80.15KHz

Option Part Number	139148-001
Kit Contents:	Graphics Accelerator Board
	QVision SW installation guide
	Reference - Win, OS/2
	Reference - ADI installation
	Warranty
	Owners Registration

	Drivers-Windows 3.1, OS/2, ADI
QuickBlank	Yes
Power Requirements	11 watts
Flat Frame Buffer View	2 megabytes
Dimensions	5.0 in x 7.75 in x 0.47 in

Integrated Audio Models Matrix

Integrated Audio Models	Type of Controller	Dos & Windows 3.X	Windows 95	Windows NT 3.51	Windows NT 4.0
Deskpro 6000 PII (9/97 & 1/98)	ESS 1869	SoftPaq Driver Only	Sound System Compatible (Native) & Softpaq Driver	Sound System Compatible (Native) & Softpaq Driver	Sound System Compatible (Native) & Softpaq Driver
Deskpro 4000 PII (9/97 & 1/98) selected models	ESS 1869	SoftPaq Driver Only	Sound System Compatible (Native) & Softpaq Driver	Sound System Compatible (Native) & Softpaq Driver	Sound System Compatible (Native) & Softpaq Driver
Deskpro 4000MMX selected models	ESS 1868	SoftPaq Driver Only	Sound System Compatible (Native) & Softpaq Driver	Sound System Compatible (Native) & Softpaq Driver	Sound System Compatible (Native) & Softpaq Driver
Deskpro XL	Compaq Enhanced Business Audio	MS WSS Compatible v2.0b	Sound System Compatible (Native)	Sound System Compatible	Sound System Compatible (Native)
Deskpro XE	Compaq Enhanced Business Audio	MS WSS Compatible v2.0b	Sound System Compatible (Native)	Sound System Compatible	Sound System Compatible (Native)
Deskpro M selected models	Compaq Enhanced Business Audio	MS WSS Compatible v2.0b	Sound System Compatible (Native)	Sound System Compatible	Sound System Compatible (Native)
Deskpro i selected models	Compaq Business Audio	MS WSS Compatible v1.02	Compaq Business Audio (Native)	Sound System Compatible	Compaq Business Audio (Native)

Deskpro M Series Memory Matrix

Deskpro M Memory Matrix								
	Type	Connector				Std	Max	
Models	RAM	Edge	Pins	Speed	Parity	MBs	MBs	Upgrade Chart
5/66M								
510	FPM	Gold	72	70ns	Yes	16	144	
5/60M								
510	FPM	Gold	72	70ns	Yes	8	136	
486/66M								
510	FPM	Gold	72	70/80ns	Yes	8	64	
486/50M								
1, 120, 240, 340	FPM	Gold	72	70/80ns	Yes	8	64	
486/33M								
1, 120, 240, 340	FPM	Gold	72	70/80ns	Yes	4	64	
486/33M								
340	FPM	Gold	72	70/80ns	Yes	8	64	
486s/33M								
240, 340	FPM	Gold	72	70/80ns	Yes	8	64	
486s/33M								
1, 120	FPM	Gold	72	70/80ns	Yes	4	64	
486s/25M								
	FPM	Gold	72	70/80ns	Yes	4/8	64	
486s/16M								
All	FPM	Gold	72	70/80ns	Yes	4	64	
3/33M								
All	FPM	Gold	72	70/80ns	Yes	4	64	
3/25M								

All	FPM	Gold	72	70/80ns	Yes	4	64	
	Standard Memory			Slots				
Standard/Max Memory	Soldered	Socketed	Used	Empty	Total			
16MB/144	16MBs Soldered*	None	0	4	4			
8MB/136	8MBs Soldered*	None	0	4	4			
8MB/64	8MBs Soldered*	None**	0	7	7			
4MB/64	4MBs Soldered*	None**	0	7	7			

Note:

*Soldered to the Processor Board which is slotted in the unit.

**SIMMs install in Memory Expansion Board.

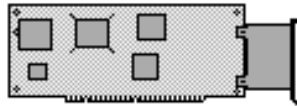
Deskpro M - Pentium Memory Features

- 8 MB standard soldered on processor board on Deskpro 5/60M installed as Bank 0
- 16 MB standard on Deskpro 5/66M (Additional 8MB soldered on installed as Bank 1)
- Sockets for memory expansion are located on the processor board.
- Uses parity SIMMs for upgrade. Non-parity SIMMs are not supported.
- Although the base memory operates at either 70ns (5/60M) or 60ns (5/66M), the expansion memory SIMMs may be either 70ns or 80ns. If you increase memory by adding SIMMs that are slower than the base memory, the base memory still runs at the faster speed, while the SIMM memory runs at the slower speed. This support is called "mixed mode" memory. Similar to mixed SIMM sizes, if mixed SIMM speeds are installed, all four SIMMs will be accessed at the slowest speed.
- The addressing scheme for these SIMMs is "symmetric". It may also be referred to as "11x11", (meaning addresses are arranged as 11 columns by 11 rows).
- The Compaq memory option kits consist of four identical industry standard 70ns, 72-pin SIMMs.

Deskpro M - 386 and 486 Memory Features

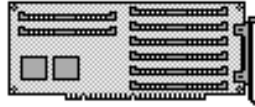
- Expandable to 64 megabytes with the optional 32-Bit 8-Socket Memory Expansion Board.
- Uses parity SIMMs for upgrade. Non-parity SIMMs are not supported.
- Uses industry standard 80 ns, 72-pin SIMMS in any order or combination

PROCESSOR BOARD
4 OR 8 MEGABYTES



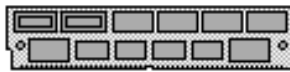
ADD

MEMORY EXPANSION BOARD
OPTION PN 129160-001

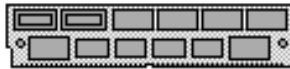


ADD ANY COMBINATION OF THE FOLLOWING MEMORY MODULES:

1-MB MEMORY MODULE - SPARE PN 118740-001



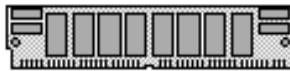
2-MB MEMORY MODULE - OPTION PN 118689-001



4-MB MEMORY MODULE - OPTION PN 118690-001



8-MB MEMORY MODULE - OPTION PN 128877-001



MAXIMUM SYSTEM MEMORY IS 64 MB

Deskpro/M Family Memory Upgrade Chart

Deskpro M Configuration Codes

Unit Name	Processor	Serial Number Code	Assy Number	Processor Board Spare #	Hard Drive	Memory	System Unit Option #	Notes
Deskpro 386/25M	386/25	HBR1	002028 002292	129157-001	Model 1	4 MB	129000-001	
Deskpro 386/25M	386/25	HBR2	002028 002292	129157-001	60 MB	4 MB	129000-002	
Deskpro 386/25M	386/25	HBR3	002028 002292	129157-001	120 MB	4 MB	129000-003	
Deskpro 386/25M	386/25	HBR6	002028 002292	129157-001	120 MB/w	4 MB	129000-004	W/Audio
Deskpro 386/33M	386/33	HBV1	002031	129419-001	Model 1	4 MB	141500-001	
Deskpro 386/33M	386/33	HBV2	002031	129419-001	60 MB	4 MB	141500-002	
Deskpro 386/33M	386/33	HBV3	002031	129419-001	120 MB	4 MB	141500-003	
Deskpro 386/33M	386/33	HBV4	002031	129419-001	120 MB/w	4 MB	141500-004	W/Audio
Deskpro 486s/25M	486/25SX	HEM3	Click here	Click here	240 MB/w	8 MB	129200-405	w/Audio
Deskpro 486s/25M	486/25SX	HGE1	Click here	Click here	Model 1	4 MB	194800-001	QV 1024
Deskpro 486s/25M	486/25SX	HGE2	Click here	Click here	120 MB/w	4 MB	194800-001	QV 1024
Deskpro 486s/25M	486/25SX	HGE3	Click here	Click here	240 MB/w	8 MB	194800-001	QV 1024
Deskpro 486s/33M	486/33SX	HGF1	003107-001 003107-002	196773-001 196774-001	Model 1	4 MB	196750-001	QV 1024
Deskpro 486s/33M	486/33SX	HGF2	003107-001 003107-002	196773-001 196774-001	120 MB/w	4 MB	196750-002	QV 1024
Deskpro 486s/33M	486/33SX	HGF3	003107-001 003107-002	196773-001 196774-001	240 MB/w	8 MB	196750-003	QV 1024
Deskpro 486s/33M	486/33SX	HGF4	003107-001 003107-002	196773-001 196774-001	340 MB/w	8 MB	196750-004	QV 1024
Deskpro 486/33M	486/33	HEN2	Click here	Click here	340 MB		129300-403	

Deskpro 486/33M	486/33	HEN4	Click here	Click here	340 MB/w		129300-405	w/Audio
Deskpro 486/33M	486/33	HEN5	Click here	Click here	240 MB/w		129300-406	w/Audio
Deskpro 486/33M	486/33	HGG1	Click here	Click here	Model 1	4 MB	194810-001	
Deskpro 486/33M	486/33	HGG2	Click here	Click here	120 MB/w	4 MB	194810-002	QV 1024
Deskpro 486/33M	486/33	HGG3	Click here	Click here	240 MB/w	8 MB	194810-003	QV 1024
Deskpro 486/33M	486/33	HGG4	Click here	Click here	340 MB/w	8 MB	194810-004	QV 1024
Deskpro 486/33M	486/33	HBN1	Click here	Click here	Model 1	8 MB	129300-001	
Deskpro 486/33M	486/33	HBN2	Click here	Click here	120 MB	8 MB	129300-002	
Deskpro 486/33M	486/33	HBN3	Click here	Click here	340 MB	8 MB	129300-003	
Deskpro 486/33M	486/33	HBN4	Click here	Click here	340 MB	16 MB	129300-004	5.25 FDD
Deskpro 486/33M	486/33	HBN5	Click here	Click here	120 MB/w	8 MB	194810-002	Audio
Deskpro 486/33M	486/33	HBN7	Click here	Click here	240 MB	8 MB	194810-003	Audio
Deskpro 486/33M	486/33	HBN6	Click here	Click here	340 MB	8 MB	194810-004	Audio
Deskpro 486/50M	486/50	HGH1	Click Here	Click Here	Model 1	8 MB	194820-001	QV 1024
Deskpro 486/50M	486/50	HGH2	Click Here	Click Here	120 MB/w	8 MB	194820-002	QV 1024
Deskpro 486/50M	486/50	HGH3	Click Here	Click Here	240 MB/w	8 MB	194820-003	QV 1024
Deskpro 486/50M	486/50	HGH4	Click Here	Click Here	340 MB/w	8 MB	194820-004	QV 1024
Deskpro 486/66M	486/66	HGJ1	002431	129430-001	Model 1	8 MB	194830-001	QV 1024
Deskpro 486/66M	486/66	HGJ2	002431	129430-001	240 MB/w	8 MB	194830-002	QV 1024
Deskpro 486/66M	486/66	HGJ3	002431	129430-001	510 MB/w	8 MB	194830-003	QV 1024

Deskpro M Configuration Codes

Deskpro586/60M	586/60	HFA1	002472-002	149943-001	Model 1	8 MB	139100-001	QV 1280
Deskpro586/60M	586/60	HFA2	002472-002	149943-001	240 MB	8 MB	139100-002	QV 1280
Deskpro586/60M	586/60	HFA4	002472-002	149943-001	510 MB	8 MB	139100-004	QV 1280
Deskpro 586/66M	586/66	HFB4	002472-001	139134-001	510 MB/w	16 MB	139200-004	QV 1280

[Privacy and Legal Statement](#)

Last Update:05-22-99 03:20:48 AM

Deskpro M 486/33 DX

Processor Board	Assembly #	Spare #
486DX/33 Processor Board	002319-001	129127-001
486DX/33 Processor Board	002297-001	129127-001
486DX/33 Processor Board	002502-001	129127-001
486DX/33 Processor Board	002502-001	140411-001
(Cut Over: October 1992)		
486DX/33 Processor Board (8 MB)	003200-001	149924-001
(Cut Over: March 1993)		

[Privacy and Legal Statement](#)

Last Update:05-22-99 03:20:48 AM

Deskpro 486M sx/25

Processor Board	Assembly #	Spare #
486SX/25 Processor Board	002316-001	129126-001
486SX/25 Processor Board	002302-001	129126-001
486SX/25 Processor Board	002825-001	129126-001
486SX/25 Processor Board (NOTE 2)	002825-001	140410-001
(Cut Over: October 1992)		
486SX/25 Processor Board (8 MB)	003197-001	149923-001
(Cut Over: March 1993)		

[Privacy and Legal Statement](#)

Last Update:05-22-99 03:20:48 AM

Deskpro M 486/50

Processor Board	Assembly #	Spare #
486DX2/50 Processor Board	002025-001	129128-001
486DX2/50 Processor Board	002972-001	129128-001
486DX2/50 Processor Board	002972-002	194825-001
(Cut Over: June 1993)		
(Supports 238-pin socket)		

[Privacy and Legal Statement](#)

Last Update:05-22-99 03:20:48 AM