



HP StorageWorks Extended Tape Library Architecture

Self-aware storage designed for your SAN



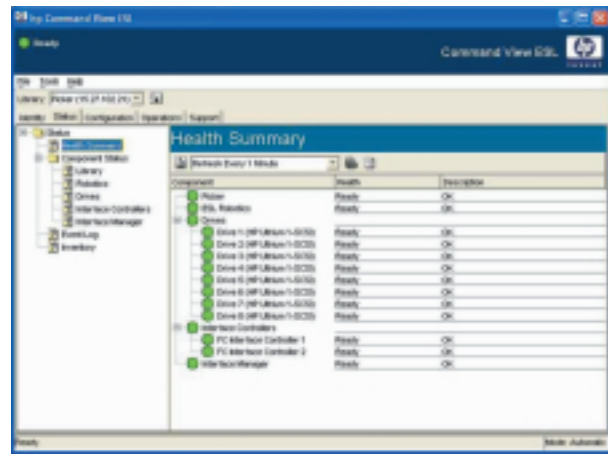
Delivering automated management and superior reliability

HP StorageWorks Extended Tape Library Architecture enables IT/storage consolidation by increasing the reliability and robustness of your SAN-attached ESL9000 Series Tape Libraries. Intelligent Controllers inside the library protect your tape drives and critical business data from unauthorized access, network conflicts, collisions, and other disruptive SAN events. Additionally, HP StorageWorks Interface Manager card and HP StorageWorks Command View ESL software—the next step in HP StorageWorks Extended Tape Library Architecture—save you time and decrease costs through world-class library management, ease-of-use, and advanced features.

Meeting the demands of your enterprise SAN

HP StorageWorks Extended Tape Library Architecture products and solutions are *created* for SANs to provide security, speed, and control:

- Decreasing IT costs and administrative work in a SAN environment through complete manageability from any location
- Delivering superior interoperability without “special” work-arounds
- Simplifying the complex task of setting up library robotics, drives, and interface controllers
- Minimizing uncertainty in complex SAN environments by allowing only authorized servers to access tape drives and critical data
- Eliminating backup server and LAN bottlenecks by allowing data to move directly from disk to tape, under the control of your backup application, without application server overload
- Protecting your IT investment by enabling an easy upgrade path as interface technologies change



Realizing the HP Adaptive Enterprise vision

HP Adaptive Enterprise solutions enable businesses to dynamically manage and control processes, applications, and IT environments. HP recognizes that the ability to manage and control increasingly complex IT and business environments are critical

HP StorageWorks Command View ESL provides unmatched ease-of-use, monitoring, management, and control of ESL9000 Series Tape Libraries in SANs

components in building an adaptive enterprise. The benefits offered by HP StorageWorks Extended Tape Library Architecture help create the most effective network storage infrastructure available.

- **Direct Backup Engine for ESL** provides data movement services for application server offloading and maximum-performance backups.
- **Secure Manager for ESL** shields libraries and drives from disruptive SAN traffic that can abort operations and slow backups and restores.
- **Command View for ESL** provides unmatched ease-of-use, monitoring, management, and control of ESL9000 Series Tape Libraries in SANs.

HP delivers more

HP is changing the playing field by delivering an integrated storage architecture that's self-aware, network-aware, and cost-effective. The HP StorageWorks Extended Tape Library Architecture maximizes return on your IT investment by giving you:

- **More than just manageability:** Focusing on reliability, robustness, and ease-of-use
- **More than just protocol-level support:** Delivering solution-level offerings, including application integration, and certified interoperability
- **More than just point products:** Offering a generous initial feature set and modular advanced feature options, neither piece-meal nor monolithic, at a lower total cost of ownership
- **More than any other company can provide:** Ensuring investment protection through Intelligent Controllers, the Adaptive Enterprise, the Command View brand, and the HP name

HP StorageWorks Extended Tape Library Architecture: Self-aware storage engineered to deliver reliability, interoperability, manageability, and advanced features to your SAN.

For detailed information on the benefits offered by HP StorageWorks Extended Tape Library Architecture products and solutions, please visit:

<http://h18006.www1.hp.com/products/storageworks/tlarchitecture>

For a white paper on the Extended Tape Library Architecture, please visit:

<http://h18006.www1.hp.com/products/storageworks/tlarchitecture/relatedinfo.html>



<http://h18006.www1.hp.com/products/storageworks/flarchitecture>

© 2003 Hewlett-Packard Development Company, L.P. The information contained herein is subject to change without notice. The only warranties for HP products and services are set forth in the express warranty statements accompanying such products and services. Nothing herein should be construed as constituting an additional warranty. HP shall not be liable for technical or editorial errors or omissions contained herein.

5982-1641EN Rev. 2, 09/2003

