

An HP StorageWorks Disk Array XP solution with Oracle 9i Real Application Clusters (RAC)



executive summary	2
overview	2
hp solution overview	2
Proliant Configuration	3
xp array Configuration	4
Switch Configuration	4
Operating System and Oracle Configuration	4
Oracle Validation	5
problems, challenges, and constraints	5
other solution options	6
for more information	6
Conclusions and comments:	6
appendices	8
appendix a: xp128 configuration	9
appendix b: FC HBA Configuration	14
appendix c: Switch configuration	23
Switch 1	23
Switch 2	24
appendix d: PDC Installation Log	27
appendix e: Oracle® Database Configuration	31
OCFS Information	33
Running Parameters:	41
SPFILE parameters:	46
appendix f: Oracle Validation	53
Benchmark Factory Output Log	58
Benchmark Factory Transaction Log	62
appendix g: Forced Rescan of Devices	69
For more information	71
Call to action	71

executive summary

The following detail is documentation of a lab exercise performed by HP in response to a number of customer requests for sample configurations and validation of Oracle 9i Real Application Clusters (9iRAC) running Red Hat Linux leveraging HP StorageWorks XP SAN technology. This activity has satisfied the three target objectives:

1. Define and document a representative, jointly supported, (both HP and Oracle) RAC on Linux configuration utilizing HP StorageWorks XP SAN technology.
2. Validated compatibility and document implementation issues encountered.
3. Validated a Linux Oracle 9iRAC multipath solution.

This document does not address XP or RAC performance as true performance metrics can only be achieved in conjunction with a specific application and the intention of this exercise is purely generic.

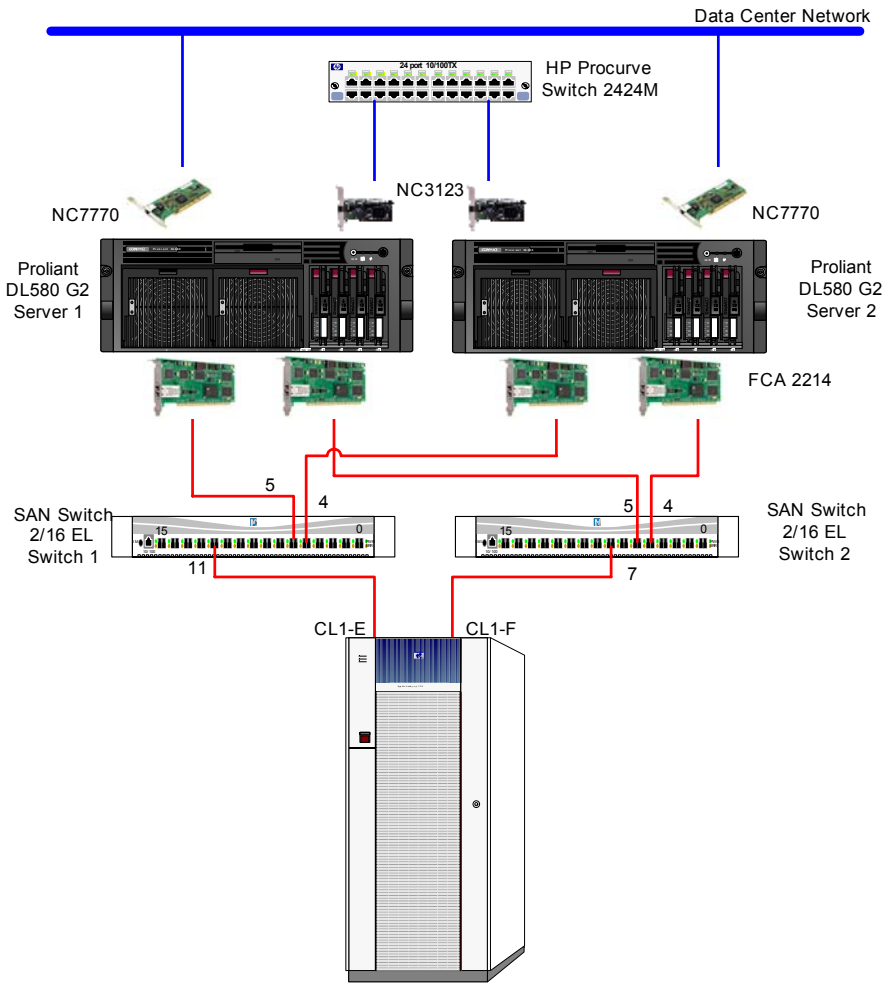
The following detail then is a specific point in time validation of RAC and xp. For assistance in implementing a custom RAC solution to fit specific application requirements contact HP Consulting and Integration.

overview

This technical white paper documents the configuration of the HP StorageWorks XP128 Disk Array with an Oracle 9i Real Application Clusters (RAC) 9.2.0.3.0 environment. This solution was staged on Red Hat Linux Advanced Server 2.1 using the HP Parallel Database Cluster (PDC) for Oracle 9iRAC on Linux. The PDC is intended for use with the MSA1000 array, but with the minor, documented, changes outlined in this paper, can be applied to XP arrays. The next version of the PDC, due to release soon, will support EVA storage as well. It details the hardware, software, array, switch and Oracle setup and documents problems found and how they were resolved.

hp solution overview

The configuration used for this activity was the StorageWorks xp128 disk array in a fibre channel (FC) storage area network (SAN) configuration with a two ProLiant DL580 G2 servers as cluster nodes.



Proliant Configuration

Two HP Proliant DL580 G2 servers were used in this RAC configuration. The server software installation was performed using HP SmartStart version 6.10. Using the Parallel Database Cluster (PDC) kit, Red Hat Linux Advanced Server 2.1 was installed. Server details:

- ROM BIOS – P27 (10/7/2002)
- Processors – (2) 1.4 GHz
 - 256 KB L2, 512 KB L3 cache
- Memory– 5120 MB
- (2) 36.4 GB 15k RPM, Ultra3 SCSI drives
- Smart Array 5i v1.82, slot 0 (Direct Attached Storage – Internal drives)
 - Logical Drive 1 – RAID 1+0 – Simplex slots 2, 3
 - Total of 33 GB (avail. to Linux)
 - SCSI Port 1, ID 0
 - SCSI Port 1, ID 1
- Same Advanced Memory Protection Mode
- Cluster interconnect achieved with NC2123 fast Ethernet NIC PCI 10/100 with an HP Proliant 2424M Switch
- Public network connection is achieved using the NC7770 pci-x gigabit server adapter

- HP FCA 2214 HBAs were used with version 6.06.50 failover driver for the SAN connection. Multipathing achieved using this HP qualified driver.

xp array Configuration

The xp128 array was used as the shared storage. Firmware level 21-06-22-00/00 was used. One new host group was created on each port, CL1-E and CL1-F, which requires LUN security. The host group was named "lnx_orcl". The Fabric-ON, Point-to-Point topology was used. The following LUNs were configured for each of the four host groups:

LUN	CU:LDEV	Emulation	Size (MB)	CMD DEV
00	00:54, 00:55, 00:56, 00:57	OPEN-9*4	29538	NO
01	00:58, 00:59, 00:5A, 00:5B	OPEN-9*4	29538	NO
02	00:5C, 00:5D, 00:6B	OPEN-9*3	22154	NO
03	00:69	OPEN-9	7385	NO
04	00:6A	OPEN-9	7385	NO

See [appendix a](#) for xp128 configuration detail. See [appendix b](#) for fibre channel (FC) host bus adapter (HBA) driver level multipathing detail.

Switch Configuration

Two HP StorageWorks SAN switch 2/16-el switches were used in this configuration. Firmware level 3.0.2f was used. Ports CL1-E and CL1-F on the XP array are 1Gbps ports. The switch auto negotiated to 1 Gbps speed for the array connection and the server HBA connections. The switch Ports 2, 5 and 11 on switch 1 are in a zone. Ports 4, 5 and 11 on switch 2 are in a zone. See [appendix c](#) for details.

Operating System and Oracle Configuration

HP's PDC kit version 1.0 for Linux was used for this installation. The PDC installs Red Hat Linux AS2.1 (2.4.9-e.24enterprise kernel), Oracle 9iRAC, and configures a small sample database. Alternatively, the operating system and Oracle software could be installed, configured and licenses could be applied independently. The PDC simplifies the install and hides some of the configuration complexity. The installation of the 9iRAC cluster in this paper took four hours using the PDC. See [appendix d](#) for details of the installation.

This PDC is designed to be used with the HP MSA1000 storage array. It can be used with the XP storage array as well. The PDC outlines three LUNs that must be presented to the cluster servers. To present appropriately sized LUNs, Logical Unit Size Extension (LUSE) was used to group identical volumes to produce larger volumes. Groupings are not required to be contiguous and are recommended to be spread across different array groups to optimize performance. In this case, OPEN-9 emulation was used. In the case of the /dev/sda device, four OPEN-9 volumes were grouped using LUSE.

It is recommended that prior to creating the LUSE volumes, any existing volume partitions be removed, so, for example, /dev/sda1 or subsequent partitions are not presented to the servers. The PDC assumes that there are no partitions on the presented volumes. One method to insure that there are no partitions prior to LUSE is to present the individual volumes to a Linux server and use the fdisk utility to delete and insure partitions are not there. An alternative to LUSE is the OPEN-V emulation, which allows custom volumes sizes to be created. LUSE usage requires a product license. OPEN-V emulation usage requires both a LUSE and Custom Volume Size (CVS) license.

It is important that the fibre channel (FC) driver be changed to the 6.06.50 driver so that the PDC installs. Follow the documentation steps in the chapter 3 "Environmental Variables" section of the

Administrator's Guide. Once the driver is loaded and functioning on one path, the second fibre channel (FC) path is introduced and multipathing could be verified using the SANSurfer tool. Verify that the correct driver is loaded. See [appendix b](#) for SANSurfer tool details. For details of the Oracle database configuration, refer to [appendix e](#).

The FC HBA driver gives the ability to rescan storage devices while the Operating System (OS) is running. This enables the user to scan the HBA driver level and then the OS level to allow mounting of the newly discovered device. This feature enables solution level capabilities such as Zero Downtime Backup, when used with the RaidManager XP product. The Zero Downtime Backup solution was not available at the time this paper was written, however. Refer to the README file included with the driver for details. Also, see [appendix g](#) for details pertaining to this configuration.

Oracle Validation

Benchmark Factory for Oracle (v 3.3) was run to validate the 9iRAC configuration. This included automated creation of tables, loading the tables, creating indices and running a mix of transactions. A total of 269MB was used for the validation database. A separate 1 GB tablespace (BFTEST) was created for this, also on the XP shared storage (/dev/sda).

Basic validation steps included pinging both private SAN and public LAN from all nodes and validation that all automatic services are running properly on all nodes.

Multipathing validation included introducing faults while the RAC was under load from the Benchmark Factory for Oracle software clients. For all tests, the Qlogic failover driver was enabled with the Round Robin load balancing policy disabled. A cable fault between the switch and storage was injected. A cable fault between an active path between the HBA to the switch was injected. Both tests passed. Disconnecting one FC link from a server, restarting that server and returning it's FC link resulted in a restored path as expected. Power down of one of the two switches resulted in a single path loss on each RAC server. Upon power up, that path returned to each RAC server as expected. In all cases, the client workload continued as expected without error.

A number of tests were performed to show high availability (HA) functionality. The first test was to shutdown one instance and verify that instance was removed from the cluster. That was successful. The next test was to remove all paths to the shared storage and verify that node was removed from the cluster. That was successful. The next test was to power one of the nodes down and verify that node was removed from the cluster. That was successful.

A multipathing test was performed where, while both paths were active and Oracle was running, one of the cables was pulled from one of the two RAC servers. Oracle was immediately shutdown and the server was rebooted. Still with only a single path available, Oracle failed to start, giving errors. The ORACM process failed to start. This test was repeated with the secondary path restored upon reboot. In this case, Oracle started without problem.

The final validation step was to run a TPC-C OLTP benchmark with a 100 user load. The load was accomplished using Benchmark Factory for Oracle software and was spread between two client nodes (50 users on each node). The test was successful and the log files can be found in [appendix f](#).

problems, challenges, and constraints

The PDC for Linux is written for use with the MSA1000 storage array. Integrating the XP storage into the procedure should be done with caution. At this time, it is not planned to write a separate PDC for XP storage. Again, an alternative is to manually load the Operating System, Oracle and Patches.

Originally, the logical devices used to create the LUSE volumes had partitions on them. This created a /dev/sda1 device, which created a problem with the PDC. The solution to this was to unrepresent the LUSE volumes from the servers, remove the LUSE relationship, present the individual logical devices to one of the servers, run fdisk and delete each of the partitions, unrepresent the volumes from the servers again, recreate the LUSE relationship and represent the LUSE LUNs to the servers, and restart the PDC installation.

Insure that the proper FC HBA driver is loaded in the environmental variables list before proceeding. If there is a break in one of the FC cables connecting the servers to the storage, the remaining path will become or remain active. It is important to note that restoring the second cable during the next reboot is critical, as Oracle would not start without this during test cases.

other solution options

Additional Oracle patchsets could be applied as needed. Use of a PDC kit later than v1.0 is recommended. A later version is being created and will likely be available near this paper's completion.

A 2 Gbps CHIP board could be used in the XP array which would also increase throughput and use the performance potential of the 2/16-el switch.

For the HA benefits of the XP, connect one fibre channel path to a port on cluster 1 and the other path to another port on cluster 2. For this paper, ports on the xp128 array were not available in both clusters, so both ports were connected to cluster 1.

For LUSE LUNs, insure that the volumes selected are spread between different array groups to improve performance. LUNs do not have to be contiguous to make create a LUSE volume.

A supported non-blocking Ethernet switch should be used for the cluster interconnect. Where possible, connect gigabit Ethernet NICs to the cluster interconnect.

The XP array configuration can be tailored to the specific database configuration that is desired. LUSE or CVS can be used to make smaller or larger LUN sizes based on requirements. Extended partitions can be created and the Oracle Object Manager can be used to create the symbolic links. As mentioned above, OPEN-V devices can be created at any size.

for more information

For more information, refer to the following web sites:

http://www.hp.com/products1/storage/products/disk_arrays/highend/xp128/index.html

<http://h18004.www1.hp.com/solutions/enterprise/highavailability/oracle9i/pdcO2000/win2000/index-msa1000.html>

<http://h18006.www1.hp.com/products/storageworks/sanswitch216el/index.html>

<http://h18004.www1.hp.com/products/servers/platforms/index-dl-ml.html>

<http://h18004.www1.hp.com/solutions/enterprise/highavailability/oracle/index.html>

<http://h30046.www3.hp.com/solutions/pdf/Oracleblueprint.pdf>

<http://metalink.oracle.com>

http://h20000.www2.hp.com/bizsupport/TechSupport/DriverDownload.jsp?pnameOID=315741&ocale=en_US&taskId=135&prodTypeId=12169&prodSeriesId=315739

<http://www.hp.com/solutions/highavailability/oracle>

Conclusions and comments:

HP supports all of the HP hardware and software components used in conjunction with the Operating System version utilized. All components meet the Oracle RAC minimum support requirements detailed on Oracle Metalink. HP and Oracle jointly support this solution in production.

No incompatibilities were identified during this testing. During all of the research necessary to complete this effort we found no indication of any support issues pending with either HP or Oracle support on the combination of XP and RAC on Red Hat Linux AS 2.1.

appendices

[Appendix a: XP128 Configuration](#)

[Appendix b: FC HBA Configuration](#)

[Appendix c: Switch Configuration](#)

[Appendix d: PDC Installation Log](#)

[Appendix e: Oracle: Database Configuration](#)

[Appendix f: Oracle Validation](#)

[Appendix g: Forced Rescan of Devices](#)

appendix a: xp128 configuration

Ports 1E and 1F are used.

Version Information

DISK SUBSYSTEM

Currently running Microprogram Version

	DRCHMAIN	LCP	HTP	LCDG	FCDG	PCDG	BOOT (RAM)	SSVP
	21-06-22-00/00						20-01-05	21-05-01

Stored Microprogram Version

Type	MP No.	DRCHMAIN	LCP	HTP	LCDG	FCDG	PCDG	BOOT (RAM)	BOOT (ROM)
<input checked="" type="radio"/> Running	CHP00-1C	21-06-22-00/00	-----	-----	-----	-----	-----	20-01-05	20-01-00
	CHP01-1C	21-06-22-00/00	-----	-----	-----	-----	-----	20-01-05	20-01-00
<input type="radio"/> FH	CHP02-1C	21-06-22-00/00	-----	-----	-----	-----	-----	20-01-05	20-01-00
	CHP03-1C	21-06-22-00/00	-----	-----	-----	-----	-----	20-01-05	20-01-00

SVP

Program	DRCHMAIN	Backup Program
21-06-22-00/00	DRCHMAIN	21-05-27-00/00
10-00-12	LCP	10-00-11
21-06-06	HTP	21-05-03
10-00-01	LCDG	-----
21-02-02	FCDG	21-02-01
21-05-00	PCDG	21-04-01
21-06-21/10	CONFIG	-----/--
20-01-05	BOOT (RAM)	20-01-04
21-06-21/00	SVP	21-05-21/00
21-05-01	S-SVP	21-04-30
21-06-00	CUDG4	21-05-02

DKU

Current (ROM-RAM /RAM-RAM)

DKR2B-K036FC F1-C7

SVP (RAM)

DKR1B-J 00-00-G1

DKR2B-J 00-00-G1

DKR1C-J 00-00-D3

Backup (RAM)

DKR1B-J 00-00-G1

DKR2B-J 00-00-G1

DKR1C-J 00-00-D3

Buttons: RENEW, OK

LUN Management

File Edit View Group WWN LUN CHA Port LDEV LUSE

Exit Switch New Change Delete Add Change Delete List Add Delete CHA Port Cmd LUSE

Display Group

Port	Type	Security	Switch	Address	Fabric	Connection	Channel Speed
1E		On		E1(4)	On	Point to Point	1[Gbps]
1F		On		E0(5)	On	Point to Point	1[Gbps]
1G		Off		DC(6)	On	Point to Point	1[Gbps]
1H		Off		DA(7)	On	Point to Point	1[Gbps]

There is no information to display here.

Ready All LU(s) 247 Allocated LU(s) 227

LUN Management -

File Edit View Group WWN LUN CHA Port LDEV LUSE

Exit Switch New Change Delete Add Change Delete List Add Delete CHA Port Cmd LUSE

Display Group

DKC

- CHA
 - CHA-1C
 - 1A
 - 1B
 - 1C
 - 1D
 - CHA-1D
 - 1E
 - 1F
 - 1G
 - 1H
 - CHA-1F
 - 1J
 - 1K
 - 1L
 - 1M
 - CHA-2G
 - 2A RCU-Target
 - 2B
 - 2C
 - 2D
 - CHA-2J
 - 2E
 - 2F

#	Group	Host Mode	
00	riker	0C	Windows
01	odr3	0C	Windows
02	odr4	0C	Windows
03	sd1	0C	Windows
04	sd3	0C	Windows
05	Inx_ord	00	Standard

WWN	Nickname
210000E08B0822D	Inx_sd32
210000E08B08902D	Inx_sd31
210000E08B086E2D	Inx_sd12
210000E08B08C22C	Inx_sd11

Ready All LU(s) 247 Allocated LU(s) 227

LUN Management -

File Edit View Group WWN LUN CHA Port LDEV LUSE

Exit Switch New Change Delete Add Change Delete List Add Delete CHA Port Cmd LUSE

Display LUN

DKC

- CHA
 - CHA-1C
 - 1A
 - 1B
 - 1C
 - 1D
 - CHA-1D
 - 1E
 - 1F
 - 1G
 - 1H
 - CHA-1F
 - 1J
 - 1K
 - 1L
 - 1M
 - CHA-2G
 - 2A RCU-Target
 - 2B
 - 2C
 - 2D
 - CHA-2J
 - 2E
 - 2F

#	Group	Host Mode	
00	riker	0C	Windows
01	odr3	0C	Windows
02	odr4	0C	Windows
03	sd1	0C	Windows
04	sd3	0C	Windows
05	Inx_ord	00	Standard

LUN	CU : LDEV	Emulation	CVS	Size	Cmd.Dev.	Cmd.Sec.
300	00 : 54+	OPEN-9 * 4		28170.00 MB	Off	Off
301	00 : 58+	OPEN-9 * 4		28170.00 MB	Off	Off
302	00 : 5C+	OPEN-9 * 3		21127.50 MB	Off	Off
303	00 : 69+	OPEN-9		7042.50 MB	Off	Off
304	00 : 6A+	OPEN-9		7042.50 MB	Off	Off

Ready All LU(s) 247 Allocated LU(s) 227

LUN Management -

File Edit View Group WWN LUN CHA Port LDEV LUSE

Exit Switch New Change Delete Add Change Delete List Add Delete CHA Port Cmd LUSE

Display Group

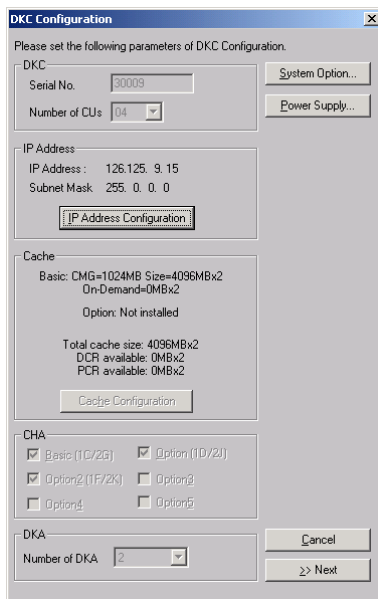
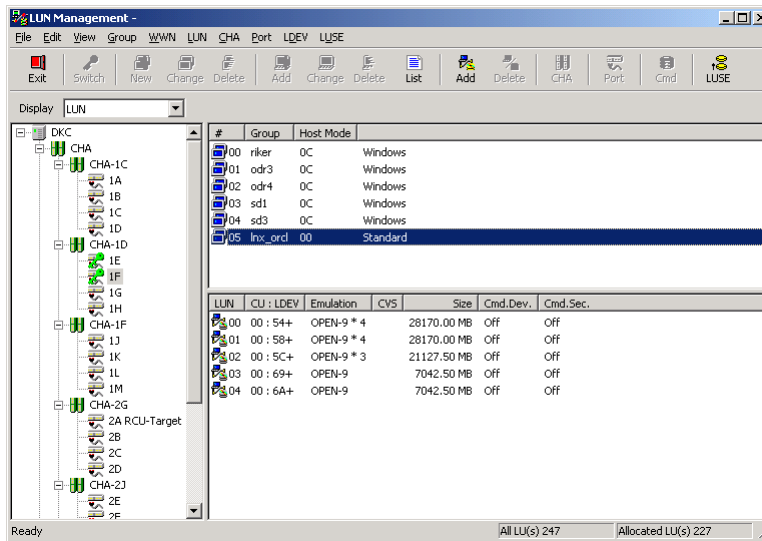
DKC

- CHA
 - CHA-1C
 - 1A
 - 1B
 - 1C
 - 1D
 - CHA-1D
 - 1E
 - 1F
 - 1G
 - 1H
 - CHA-1F
 - 1J
 - 1K
 - 1L
 - 1M
 - CHA-2G
 - 2A RCU-Target
 - 2B
 - 2C
 - 2D
 - CHA-2J
 - 2E
 - 2F

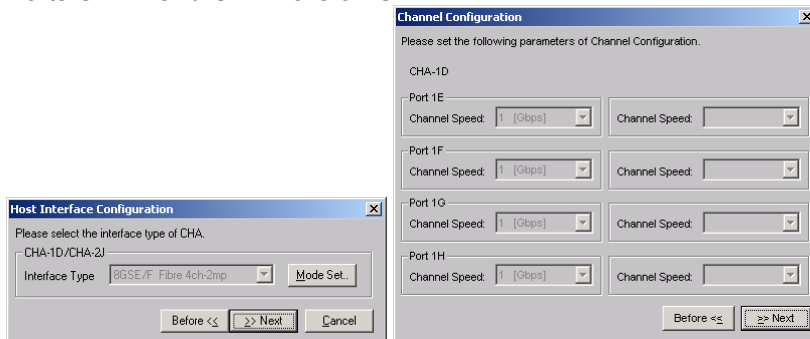
#	Group	Host Mode	
00	riker	0C	Windows
01	odr3	0C	Windows
02	odr4	0C	Windows
03	sd1	0C	Windows
04	sd3	0C	Windows
05	Inx_ord	00	Standard

WWN	Nickname
210000E08B0822D	Inx_sd32
210000E08B08902D	Inx_sd31
210000E08B086E2D	Inx_sd12
210000E08B08C22C	Inx_sd11

Ready All LU(s) 247 Allocated LU(s) 227



Ports CL1-E and CL1-F are on CHA-1D



Disk Interface Configuration

Please select the interface type of DKF

DKA-1B/DKA-2L
DKF Type:

DKA-1F/DKA-2K
DKF Type:

DKF(1st.)
DKF Type:

DKF(1st.)
DKF Type:

Before << >> Next Cancel

Parity Group Configuration (1st)

Currently setting parity group(s)

Grp.	Drive Type	HDD	RAID Level
1-1	DKS2B-K036FC	4	RAID5 (3D+1P)
1-2	DKS2B-K036FC	4	RAID5 (3D+1P)
1-3	DKS2B-K036FC	4	RAID5 (3D+1P)
1-4	DKS2B-K036FC	4	RAID5 (3D+1P)
1-5	DKS2B-K036FC	4	RAID5 (3D+1P)
1-6	DKS2B-K036FC	4	RAID5 (3D+1P)
1-7	DKS2B-K036FC	4	RAID5 (3D+1P)
1-8	DKS2B-K036FC	4	RAID5 (3D+1P)
1-9	DKS2B-K036FC	4	RAID5 (3D+1P)
1-10	DKS2B-K036FC	4	RAID5 (3D+1P)
1-11	DKS2B-K036FC	4	RAID5 (3D+1P)
1-12	DKS2B-K036FC	4	RAID5 (3D+1P)
Spare 1	DKS2B-K036FC	1	RAID5 (3D+1P)

48D+1S

Group... Spare... Delete

OK

Device Emulation Configuration

Please select parity group to set LDEV(s)

Grp.	Emulation	LDEV	Atr.	Drive Type	On-Demand
1-1	OPEN-9	14	RAID5 (3D+1P)	DKS2B-K036FC	
1-2	OPEN-9	14	RAID5 (3D+1P)	DKS2B-K036FC	
1-3	OPEN-9	14	RAID5 (3D+1P)	DKS2B-K036FC	
1-4	OPEN-9	14	RAID5 (3D+1P)	DKS2B-K036FC	
1-5	OPEN-8	39 (CVS)	RAID5 (3D+1P)	DKS2B-K036FC	
1-6	OPEN-E	8 (CVS)	RAID5 (3D+1P)	DKS2B-K036FC	
1-7	OPEN-9	14	RAID5 (3D+1P)	DKS2B-K036FC	
1-8	OPEN-9	14	RAID5 (3D+1P)	DKS2B-K036FC	
1-9	OPEN-3	89 (CVS)	RAID5 (3D+1P)	DKS2B-K036FC	
1-10	OPEN-9	14	RAID5 (3D+1P)	DKS2B-K036FC	
1-11	OPEN-9	14 (CVS)	RAID5 (3D+1P)	DKS2B-K036FC	
1-12	OPEN-9	14	RAID5 (3D+1P)	DKS2B-K036FC	

Total: 262 LDEV

Set... Clear... Detail... Concatenate... Remain... Cancel Before << >> Next

Logical Device ID Configuration

Please select parity group to set LDEV ID.

Grp.	Emulation	Status	LUSE	On-Demand	LDEV ID
1-1	OPEN-9	Complete			
1-2	OPEN-9	Complete			
1-3	OPEN-9	Complete			
1-4	OPEN-9	Complete			
1-5	OPEN-8	Complete			
1-6	OPEN-E	Complete			
1-7	OPEN-9	Complete			
1-8	OPEN-9	Complete			
1-9	OPEN-3	Complete			
1-10	OPEN-9	Complete			
1-11	OPEN-9	Complete			
1-12	OPEN-9	Complete			

Linear... Disperse... Detail... Clear

Cancel Before << >> Next

Set SSID Boundary

Please select SSID Boundary type.

SSID Boundary:

Before << >> Next Cancel

Subsystem ID Configuration

Please select Sub System to set SS ID

Sub System	SS ID
00 00FF	0004
01 00FF	0005
02 00FF	0006
03 00FF	0007
04 00FF	0008
05 00FF	0009
06 00FF	000A
07 00FF	000B
08 00FF	000C
09 00FF	000D
0A 00FF	000E
0B 00FF	000F
0C 00FF	0010
0D 00FF	0011
0E 00FF	0012
0F 00FF	0013

SS ID... Cancel Before << >> Next

* : Set SSID for defined LDEVs.

DCR Configuration

Please select parity group to set DCR.

Grp.	LDEV	Size
1-1	00:00, 00:01,
1-2	00:0E, 00:0F,
1-3	00:1C, 00:1D,
1-4	00:2A, 00:2B,
1-5	01:00, 01:01,
1-6	01:0E, 01:0F,
1-7	00:54, 00:55,
1-8	00:62, 00:63,
1-9	02:00, 02:01,
1-10	00:7E, 00:7F,
1-11	00:8C, 00:8D,
1-12	00:9A, 00:9B,

Detail... Cancel Before << >> Next

Total 0.00 MByte x2 use for DCR.
Selected Group:

Shared Memory Size Configuration

Please select Shared Memory Module/Size function.

SM Size

Shared Memory Size: MByte x2

Install HMRG/HDMRG/HRC/HORC/HHSM function.

SM Size (White Socket (3),(4),(5),(6)) SM Size (Black Socket (1),(2))

Module: MByte Module: MByte

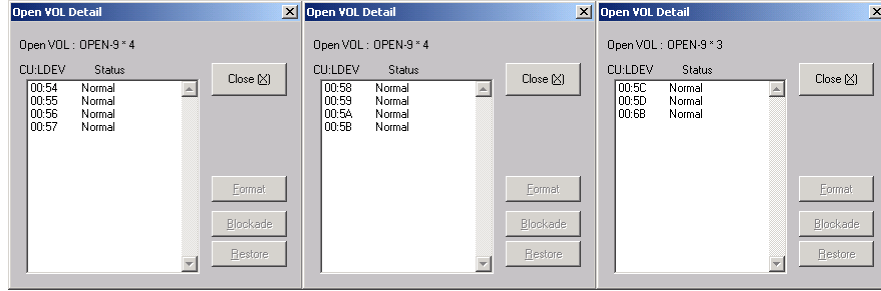
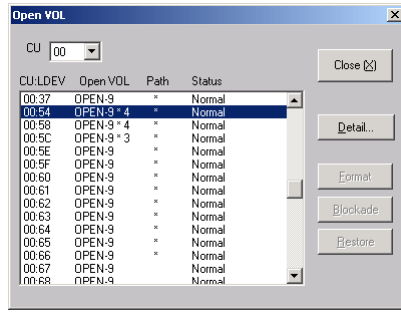
Installing: MByte x2 Installing: MByte x2

Cache PCB Image

Cache Module:

SM Module:

Before << >> Next Cancel



appendix b: FC HBA Configuration

/var/log/messages entries:

```
Oct 15 13:54:58 racnode1 kernel: scsi2 : QLogic QLA2312 PCI to Fibre Channel Host
Adapter: bus 10 device 1 irq 10
Oct 15 13:54:58 racnode1 kernel:          Firmware version: 3.02.16, Driver version
6.06.50b4-fo
Oct 15 13:54:58 racnode1 kernel:
Oct 15 13:54:58 racnode1 kernel: scsi3 : QLogic QLA2312 PCI to Fibre Channel Host
Adapter: bus 10 device 2 irq 10
Oct 15 13:54:58 racnode1 kernel:          Firmware version: 3.02.16, Driver version
6.06.50b4-fo
```

QLA2300 HBA information

```
[root@racnode1 root]# cd /proc/scsi/qla2300/
[root@racnode1 qla2300]# ls
2 3 HbaApiNode
[root@racnode1 qla2300]# cat 2
QLogic PCI to Fibre Channel Host Adapter for QLA2340:
    Firmware version: 3.02.16, Driver version 6.06.50b4-fo
Entry address = f885b060
HBA: QLA2312 , Serial# H32560
Request Queue = 0x366a4000, Response Queue = 0x36690000
Request Queue count= 128, Response Queue count= 512
Total number of active commands = 2
Total number of interrupts = 54006486
Total number of IOCBs (used/max) = (8/600)
Total number of queued commands = 2
    Device queue depth = 0x20
Number of free request entries = 104
Number of mailbox timeouts = 0
Number of ISP aborts = 0
Number of loop resyncs = 17
Number of retries for empty slots = 0
Number of reqs in pending_q= 0, retry_q= 0, done_q= 0, scsi_retry_q= 0
Number of reqs in failover_q= 0
Host adapter:loop state= <READY>, flags= 0x8e0833
Dpc flags = 0x40
MBX flags = 0x0
SRB Free Count = 4094
Link down Timeout = 008
Port down retry = 016
Login retry count = 016
Commands retried with dropped frame(s) = 0
```

```
SCSI Device Information:
scsi-qla0-adapter-node=200000e08b0b902d;
scsi-qla0-adapter-port=210000e08b0b902d;
scsi-qla0-port-0=50060e8003753905:50060e8003753905;
```

```
SCSI LUN Information:
(Id:Lun) * - indicates lun is not registered with the OS.
( 0: 0): Total reqs 54279142, Pending reqs 2, flags 0x0, 0:0:81,
( 0: 1): Total reqs 91, Pending reqs 0, flags 0x0, 0:0:81,
( 0: 2): Total reqs 91, Pending reqs 0, flags 0x0, 0:0:81,
( 0: 3): Total reqs 8, Pending reqs 0, flags 0x0, 0:0:81,
( 0: 4): Total reqs 9, Pending reqs 0, flags 0x0, 0:0:81,
[root@racnode1 qla2300]# cat 3
QLogic PCI to Fibre Channel Host Adapter for QLA2340:
    Firmware version: 3.02.16, Driver version 6.06.50b4-fo
Entry address = f885b060
HBA: QLA2312 , Serial# H32354
Request Queue = 0x36570000, Response Queue = 0x36560000
Request Queue count= 128, Response Queue count= 512
Total number of active commands = 0
Total number of interrupts = 253753
Total number of IOCBs (used/max) = (0/600)
Total number of queued commands = 0
```

```

Device queue depth = 0x20
Number of free request entries = 31
Number of mailbox timeouts = 0
Number of ISP aborts = 0
Number of loop resyncs = 12
Number of retries for empty slots = 0
Number of reqs in pending_q= 0, retry_q= 0, done_q= 0, scsi_retry_q= 0
Number of reqs in failover_q= 0
Host adapter:loop state= <READY>, flags= 0x8e0833
Dpc flags = 0x40
MBX flags = 0x0
SRB Free Count = 4096
Link down Timeout = 008
Port down retry = 016
Login retry count = 016
Commands retried with dropped frame(s) = 0

```

```

SCSI Device Information:
scsi-qlal-adapter-node=200000e08b0bc22c;
scsi-qlal-adapter-port=210000e08b0bc22c;
scsi-qlal-port-0=50060e8003753904:50060e8003753904;

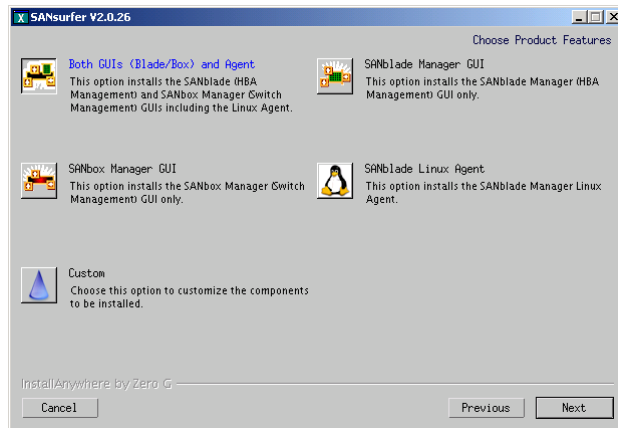
```

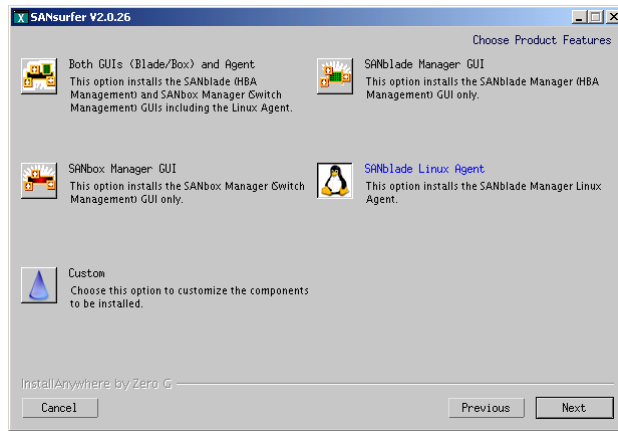
```

SCSI LUN Information:
(Id:Lun) * - indicates lun is not registered with the OS.

```

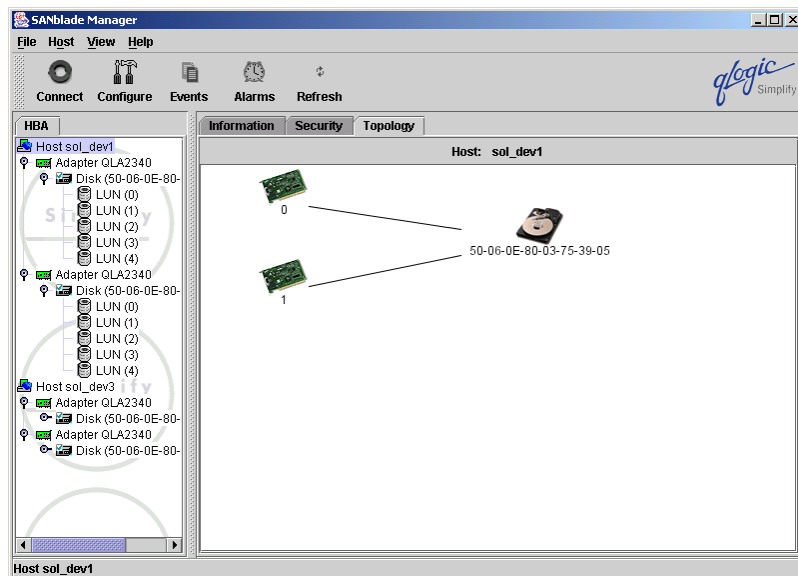
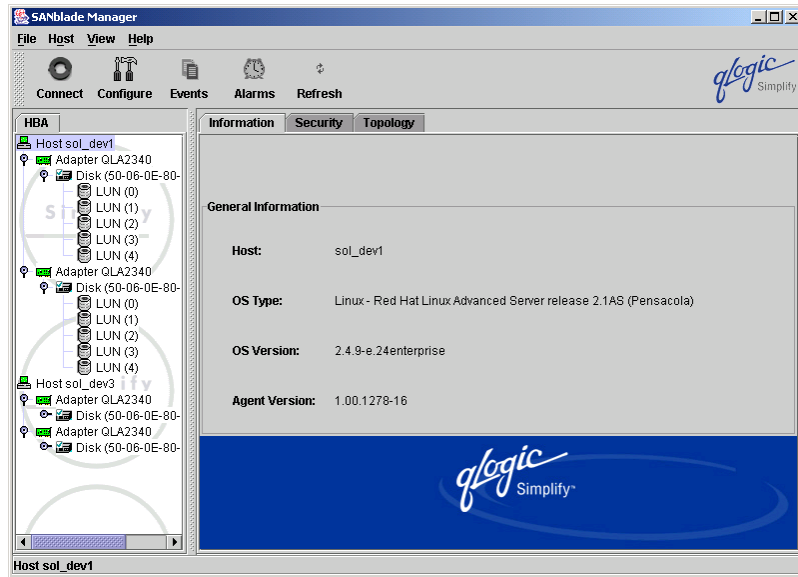
SANsurfer (HBA Configuration GUI) information





Running processes for SANSurfer:

```
[root@racnode1 gui]# ps -ef|grep ql
root      4482      1   0 10:15 pts/4    00:00:00 /usr/local/bin/qlremote
root      4483     4482   0 10:15 pts/4    00:00:00 /usr/local/bin/qlremote
root      4484     4483   1 10:15 pts/4    00:00:00 /usr/local/bin/qlremote
```



qlogic Simplify

File Host View Help

Connect Configure Events Alarms Refresh

HBA

- Host sol_dev1
 - Adapter QLA2340
 - Disk (50-06-0E-80-...)
 - LUN (0)
 - LUN (1)
 - LUN (2)
 - LUN (3)
 - LUN (4)
 - Adapter QLA2340
 - Disk (50-06-0E-80-...)
 - LUN (0)
 - LUN (1)
 - LUN (2)
 - LUN (3)
 - LUN (4)
- Host sol_dev3
 - Adapter QLA2340
 - Disk (50-06-0E-80-...)
 - Adapter QLA2340
 - Disk (50-06-0E-80-...)

Information | Device List | Statistics | Settings | Link Status | Utilities | Diagnostics

Host: sol_dev1 Node Name: 20-00-00-E0-8B-0B-90-2D
 Adapter: 0 - QLA2340 Port Name: 21-00-00-E0-8B-0B-90-2D
 Port ID: 01-14-00

General Information

HBA Alias:

Serial Number: H32560 Driver Version: 6.06.50b4-f0

BIOS Version: 1.33 Firmware Version: 3.02.16

qlogic Simplify

Adapter QLA2340 QLA2340/QLA2340L (PCI to FC single channel)

qlogic Simplify

File Host View Help

Connect Configure Events Alarms Refresh

HBA

- Host sol_dev1
 - Adapter QLA2340
 - Disk (50-06-0E-80-...)
 - LUN (0)
 - LUN (1)
 - LUN (2)
 - LUN (3)
 - LUN (4)
 - Adapter QLA2340
 - Disk (50-06-0E-80-...)
 - LUN (0)
 - LUN (1)
 - LUN (2)
 - LUN (3)
 - LUN (4)
- Host sol_dev3
 - Adapter QLA2340
 - Disk (50-06-0E-80-...)
 - Adapter QLA2340
 - Disk (50-06-0E-80-...)

Information | Device List | Statistics | Settings | Link Status | Utilities | Diagnostics

Host: sol_dev1 Node Name: 20-00-00-E0-8B-0B-90-2D
 Adapter: 0 - QLA2340 Port Name: 21-00-00-E0-8B-0B-90-2D
 Port ID: 01-14-00

Path	Target	Device ...	Port ID	Vendor ID	Product ID	Product Revision
0		0 0x81	01-17-00	HP	OPEN-9*4	2106

Adapter QLA2340 QLA2340/QLA2340L (PCI to FC single channel)

qlogic Simplify

File Host View Help

Connect Configure Events Alarms Refresh

HBA

- Host sol_dev1
 - Adapter QLA2340
 - Disk (50-06-0E-80-...)
 - LUN (0)
 - LUN (1)
 - LUN (2)
 - LUN (3)
 - LUN (4)
 - Adapter QLA2340
 - Disk (50-06-0E-80-...)
 - LUN (0)
 - LUN (1)
 - LUN (2)
 - LUN (3)
 - LUN (4)
- Host sol_dev3
 - Adapter QLA2340
 - Disk (50-06-0E-80-...)
 - Adapter QLA2340
 - Disk (50-06-0E-80-...)

Information | Device List | Statistics | Settings | Link Status | Utilities | Diagnostics

Host: sol_dev1 Node Name: 20-00-00-E0-8B-0B-90-2D
 Adapter: 0 - QLA2340 Port Name: 21-00-00-E0-8B-0B-90-2D
 Port ID: 01-14-00

Max

0

Adapter Errors Device Errors Reset I/O Count IOPS BPS

Set Rate Update Reset Log to File Auto Poll

Adapter QLA2340 QLA2340/QLA2340L (PCI to FC single channel)

QLogic SANblade Manager

File Host View Help

Connect Configure Events Alarms Refresh

qllogic Simplify

HBA

Host sol_dev1

- Adapter QLA2340
 - Disk (50-06-0E-80-...)
 - LUN (0)
 - LUN (1)
 - LUN (2)
 - LUN (3)
 - LUN (4)
- Adapter QLA2340
 - Disk (50-06-0E-80-...)
 - LUN (0)
 - LUN (1)
 - LUN (2)
 - LUN (3)
 - LUN (4)

Host sol_dev3

- Adapter QLA2340
 - Disk (50-06-0E-80-...)
- Adapter QLA2340
 - Disk (50-06-0E-80-...)

Adapter QLA2340 QLA2340/QLA2340L (PCI to FC single channel)

Information Device List Statistics Settings Link Status Utilities Diagnostics

Host sol_dev1 Node Name 20-00-00-E0-8B-0B-90-2D
 Adapter 0 - QLA2340 Port Name 21-00-00-E0-8B-0B-90-2D
 Port ID 01-14-00

Select Settings section Adapter Settings

Adapter Settings

Connection Options: 1 - Point to Point Only

Data Rate: Auto Frame Size: 2048

Hard Loop ID: 0 Loop Reset Delay (seconds): 5

Enable Host Adapter BIOS
 Enable Adapter Hard Loop ID
 Enable Fibre Channel Tape Support

Save Current Initial

QLogic SANblade Manager

File Host View Help

Connect Configure Events Alarms Refresh

qllogic Simplify

HBA

Host sol_dev1

- Adapter QLA2340
 - Disk (50-06-0E-80-...)
 - LUN (0)
 - LUN (1)
 - LUN (2)
 - LUN (3)
 - LUN (4)
- Adapter QLA2340
 - Disk (50-06-0E-80-...)
 - LUN (0)
 - LUN (1)
 - LUN (2)
 - LUN (3)
 - LUN (4)

Host sol_dev3

- Adapter QLA2340
 - Disk (50-06-0E-80-...)
- Adapter QLA2340
 - Disk (50-06-0E-80-...)

Adapter QLA2340 QLA2340/QLA2340L (PCI to FC single channel)

Information Device List Statistics Settings Link Status Utilities Diagnostics

Host sol_dev1 Node Name 20-00-00-E0-8B-0B-90-2D
 Adapter 0 - QLA2340 Port Name 21-00-00-E0-8B-0B-90-2D
 Port ID 01-14-00

Port Name	Link Failure	Sync Loss	Signal Loss	Invalid CRC
Adapter (21-00-00-E0-8B-0B-90-2D)	0	1	1	0
Disk (50-06-0E-80-03-75-39-05)	0	0	0	0

Refresh Current Refresh Total Reset Current

QLogic SANblade Manager

File Host View Help

Connect Configure Events Alarms Refresh

qllogic Simplify

HBA

Host sol_dev1

- Adapter QLA2340
 - Disk (50-06-0E-80-...)
 - LUN (0)
 - LUN (1)
 - LUN (2)
 - LUN (3)
 - LUN (4)
- Adapter QLA2340
 - Disk (50-06-0E-80-...)
 - LUN (0)
 - LUN (1)
 - LUN (2)
 - LUN (3)
 - LUN (4)

Host sol_dev3

- Adapter QLA2340
 - Disk (50-06-0E-80-...)
- Adapter QLA2340
 - Disk (50-06-0E-80-...)

Adapter QLA2340 QLA2340/QLA2340L (PCI to FC single channel)

Information Device List Statistics Settings Link Status Utilities Diagnostics

Host sol_dev1 Node Name 20-00-00-E0-8B-0B-90-2D
 Adapter 0 - QLA2340 Port Name 21-00-00-E0-8B-0B-90-2D
 Port ID 01-14-00

Utilities

Update Flash Save Flash

Update NVRAM Save NVRAM

Device Replacement

qllogic Simplify

qlogic Simplify

File Host View Help

Connect Configure Events Alarms Refresh

HBA

- Host sol_dev1
 - Adapter QLA2340
 - Disk (50-06-0E-80-...)
 - LUN (0)
 - LUN (1)
 - LUN (2)
 - LUN (3)
 - LUN (4)
 - Adapter QLA2340
 - Disk (50-06-0E-80-...)
 - LUN (0)
 - LUN (1)
 - LUN (2)
 - LUN (3)
 - LUN (4)
 - Host sol_dev3
 - Adapter QLA2340
 - Disk (50-06-0E-80-...)
 - Adapter QLA2340
 - Disk (50-06-0E-80-...)

Information Device List Statistics Settings Link Status Utilities Diagnostics

Host: sol_dev1 Node Name: 20-00-00-E0-88-0B-90-2D
 Adapter: 0 - QLA2340 Port Name: 21-00-00-E0-8B-0B-90-2D
 Port ID: 01-14-00

Test Configuration

Data Pattern: Random Number of test(s) (1-10,000): 1
 Customized (xx xx xx xx xx xx xx xx): Test Increment (1-10,000): 1
 Data Size (Bytes): 8 On Error: Ignore
 Test continuously

Test Result

Loopback Test Read/Write Buffer Test

Adapter QLA2340 QLA2340/QLA2340L (PCI to FC single channel)

qlogic Simplify

File Host View Help

Connect Configure Events Alarms Refresh

HBA

- Host sol_dev1
 - Adapter QLA2340
 - Disk (50-06-0E-80-...)
 - LUN (0)
 - LUN (1)
 - LUN (2)
 - LUN (3)
 - LUN (4)
 - Adapter QLA2340
 - Disk (50-06-0E-80-...)
 - LUN (0)
 - LUN (1)
 - LUN (2)
 - LUN (3)
 - LUN (4)
 - Host sol_dev3
 - Adapter QLA2340
 - Disk (50-06-0E-80-...)
 - Adapter QLA2340
 - Disk (50-06-0E-80-...)

Information LUN List

Host: sol_dev1 Node Name: 20-00-00-E0-88-0B-90-2D
 Adapter: 0 - QLA2340 Port Name: 21-00-00-E0-8B-0B-90-2D
 Port ID: 01-14-00

General Information

Product Vendor: HP Product ID: OPEN-9*4
 Product Revision: 2106 Node Name: 50-06-0E-80-03-75-39-05
 Port ID: 01-17-00 Port Name: 50-06-0E-80-03-75-39-05

qlogic Simplify

Disk (50-06-0E-80-03-75-39-05)

qlogic Simplify

File Host View Help

Connect Configure Events Alarms Refresh

HBA

- Host sol_dev1
 - Adapter QLA2340
 - Disk (50-06-0E-80-...)
 - LUN (0)
 - LUN (1)
 - LUN (2)
 - LUN (3)
 - LUN (4)
 - Adapter QLA2340
 - Disk (50-06-0E-80-...)
 - LUN (0)
 - LUN (1)
 - LUN (2)
 - LUN (3)
 - LUN (4)
 - Host sol_dev3
 - Adapter QLA2340
 - Disk (50-06-0E-80-...)
 - Adapter QLA2340
 - Disk (50-06-0E-80-...)

Information LUN List

Device Vendor: HP Device Product ID: OPEN-9*4 Device Product Rev: 2106
 Device Node Name: 50-06-0E-80-03-75-39-05
 Device Port Name: 50-06-0E-80-03-75-39-05
 Device Port ID: 01-17-00

LUN	Vendor	Product ID	Product Rev	World Wide Unique L...	Size	Disk Number
0	HP	OPEN-9*4	2106	52-34-35-31-20-30-3...	27.51 GB	N/A
1	HP	OPEN-9*4	2106	52-34-35-31-20-30-3...	27.51 GB	N/A
2	HP	OPEN-9*3	2106	52-34-35-31-20-30-3...	20.63 GB	N/A
3	HP	OPEN-9	2106	52-34-35-31-20-30-3...	6.88 GB	N/A
4	HP	OPEN-9	2106	52-34-35-31-20-30-3...	6.88 GB	N/A

Disk (50-06-0E-80-03-75-39-05)

SANblade Manager

File Host View Help

Connect Configure Events Alarms Refresh

qlogic Simplify

HBA

- Host sol_dev1
 - Adapter GLA2340
 - Disk (50-06-0E-80-03-75-39-04)
 - LUN (0)
 - LUN (1)
 - LUN (2)
 - LUN (3)
 - LUN (4)
 - Adapter GLA2340
 - Disk (50-06-0E-80-03-75-39-04)
 - LUN (0)
 - LUN (1)
 - LUN (2)
 - LUN (3)
 - LUN (4)
- Host sol_dev3
 - Adapter GLA2340
 - Disk (50-06-0E-80-03-75-39-04)
 - Adapter GLA2340
 - Disk (50-06-0E-80-03-75-39-04)

Information

Device Vendor: HP Device Product ID: OPEN-9*4 Device Product Rev: 210

Device Node Name: 50-06-0E-80-03-75-39-05

Device Port Name: 50-06-0E-80-03-75-39-05

Device Port ID: 01-17-00

General Information

Product Vendor: HP Product ID: OPEN-9*4

Product Revision: 2106 LUN: 0

Size: 27.51 GB

WWLUN: 52-34-35-31-20-30-30-33-30-30-39-20-30-30-38-34-20-20

qlogic Simplify

LUN (0)

Fibre Channel Configuration - sol_dev1

File Adapter Device LUNs Help

qlogic Simplify **Fibre Channel Port Configuration**

Node Name	Port Name	Port ID	Adapter 0 (State/Topo/Bind/ID)	Adapter 1 (State/Topo/Bind/ID)
50-06-0E-80-03-75-39-05	50-06-0E-80-03-75-39-04	02-1B-00		Fabric
	50-06-0E-80-03-75-39-05	01-17-00	Fabric <input checked="" type="checkbox"/> 0	

Save Cancel

LUN Configuration for sol_dev1, for Device Node Name: 50-06-0E-80-03-75-39-05

File Tools Help

qlogic Simplify **Fibre Channel LUN Configuration**

LUN	Enable	Port Name	Adapter 0 (State/Topo/Current)	Adapter 1 (State/Topo/Current)
0	<input checked="" type="checkbox"/>	50-06-0E-80-03-75-39-04	Preferred Fabric Current	Alternate Fabric
		50-06-0E-80-03-75-39-05	Preferred Fabric Current	Alternate Fabric
1	<input checked="" type="checkbox"/>	50-06-0E-80-03-75-39-04	Preferred Fabric Current	Alternate Fabric
		50-06-0E-80-03-75-39-05	Preferred Fabric Current	Alternate Fabric
2	<input checked="" type="checkbox"/>	50-06-0E-80-03-75-39-04	Preferred Fabric Current	Alternate Fabric
		50-06-0E-80-03-75-39-05	Preferred Fabric Current	Alternate Fabric
3	<input checked="" type="checkbox"/>	50-06-0E-80-03-75-39-04	Preferred Fabric Current	Alternate Fabric
		50-06-0E-80-03-75-39-05	Preferred Fabric Current	Alternate Fabric
4	<input checked="" type="checkbox"/>	50-06-0E-80-03-75-39-04	Preferred Fabric Current	Alternate Fabric
		50-06-0E-80-03-75-39-05	Preferred Fabric Current	Alternate Fabric

OK Cancel

LUN Configuration for sol_dev1, for Device Node Name: 50-06-0E-80-03-75-39-05

File Tools Help

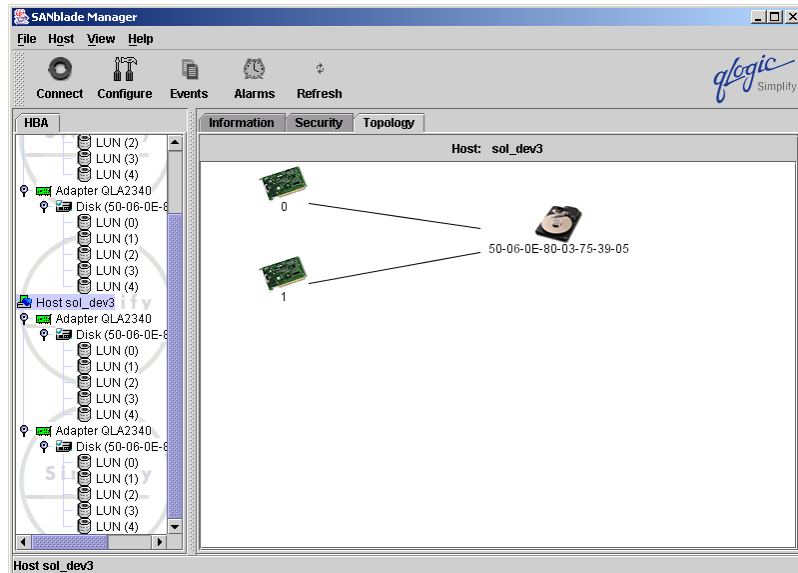
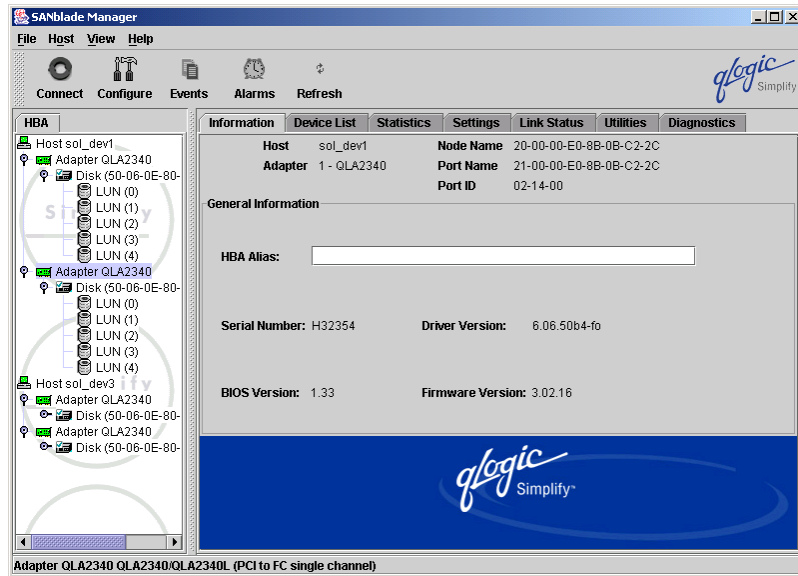
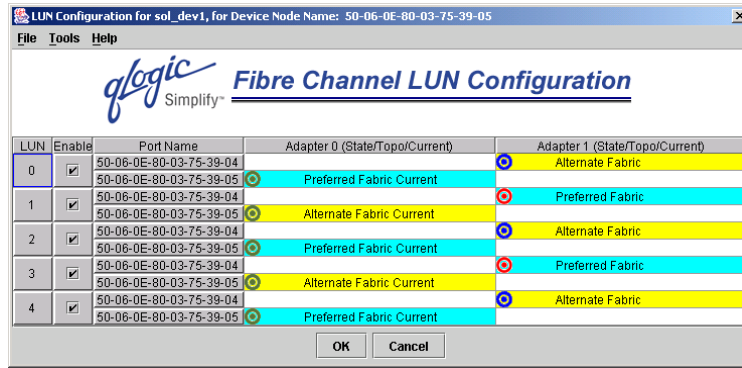
Auto Configure **Channel LUN Configuration**

Load Balance Enabled LUNs Only

All LUNs

LUN	Enable	Port Name	Adapter 0 (State/Topo/Current)	Adapter 1 (State/Topo/Current)
0	<input checked="" type="checkbox"/>	50-06-0E-80-03-75-39-04	Preferred Fabric Current	Alternate Fabric
		50-06-0E-80-03-75-39-05	Preferred Fabric Current	Alternate Fabric
1	<input checked="" type="checkbox"/>	50-06-0E-80-03-75-39-04	Preferred Fabric Current	Alternate Fabric
		50-06-0E-80-03-75-39-05	Preferred Fabric Current	Alternate Fabric
2	<input checked="" type="checkbox"/>	50-06-0E-80-03-75-39-04	Preferred Fabric Current	Alternate Fabric
		50-06-0E-80-03-75-39-05	Preferred Fabric Current	Alternate Fabric
3	<input checked="" type="checkbox"/>	50-06-0E-80-03-75-39-04	Preferred Fabric Current	Alternate Fabric
		50-06-0E-80-03-75-39-05	Preferred Fabric Current	Alternate Fabric
4	<input checked="" type="checkbox"/>	50-06-0E-80-03-75-39-04	Preferred Fabric Current	Alternate Fabric
		50-06-0E-80-03-75-39-05	Preferred Fabric Current	Alternate Fabric

OK Cancel



qlogic Simplify

File Host View Help

Connect Configure Events Alarms Refresh

HBA

- Host sol_dev1
 - Adapter QLA2340
 - Adapter QLA2340
- Host sol_dev3
 - Adapter QLA2340
 - Disk (50-06-0E-80-03-75-39-05)
 - LUN (0)
 - LUN (1)
 - LUN (2)
 - LUN (3)
 - LUN (4)
 - Adapter QLA2340
 - Disk (50-06-0E-80-03-75-39-05)
 - LUN (0)
 - LUN (1)
 - LUN (2)
 - LUN (3)
 - LUN (4)

Information **LUN List**

Host	sol_dev3	Node Name	20-00-00-E0-88-0B-82-2D
Adapter	0 - QLA2340	Port Name	21-00-00-E0-88-0B-82-2D
		Port ID	01-15-00

General Information

Product Vendor:	HP	Product ID:	OPEN-9*4
Product Revision:	2106	Node Name:	50-06-0E-80-03-75-39-05
Port ID:	01-17-00	Port Name:	50-06-0E-80-03-75-39-05

qlogic Simplify

Disk (50-06-0E-80-03-75-39-05)

appendix c: Switch configuration

Switch 1

```
Fabric OS (tm) Release v3.0.2f

login: admin
Password:

casasw8:admin> switchshow
switchName:      casasw8
switchType:      17.2
switchState:     Online
switchMode:      Native
switchRole:      Subordinate
switchDomain:     2
switchId:        fffc02
switchWwn:       10:00:00:60:69:5a:09:54
switchBeacon:    OFF
Zoning:          ON (sv3k_cam)
port 0: id N2 Online      F-Port 50:00:1f:e1:50:00:a1:dd
port 1: id N2 Online      F-Port 50:00:1f:e1:50:00:a1:d9
port 2: id N1 Online      F-Port 10:00:00:00:c9:2d:ea:1e
port 3: id N2 No_Light
port 4: id N1 Online      F-Port 10:00:00:00:c9:21:90:55
port 5: id N1 Online      F-Port 10:00:00:00:c9:21:97:25
port 6: id N2 No_Light
port 7: id N2 No_Light
port 8: id N1 Online      F-Port 10:00:00:e0:02:21:d2:7e
port 9: id N2 Online      F-Port 50:06:0b:00:00:12:dc:82
port 10: id N2 Online     F-Port 50:06:0b:00:00:12:dc:7e
port 11: id N1 Online     F-Port 50:06:0e:80:03:75:39:04
port 12: id N2 No_Light
port 13: id N1 Online     E-Port 10:00:00:60:69:15:02:90 "casasw1" (upstream)
port 14: id N2 Online     F-Port 21:00:00:e0:8b:06:d7:85
port 15: id N2 Online     F-Port 21:00:00:e0:8b:06:d6:85
casasw8:admin> zoneshow
Defined configuration:
cfg:      sv3k_cam
          cam; non_cam_odr3_sz; non_cam_odr4_sz; non_cam_kirk_hz;
          non_cam_soldev3_hz; non_cam_tuvok_hz; perflzone; adm_zone;
          riker_zone; oracle_bones_zone; oracle_kirk_zone; oracle_9irac
zone:     adm_zone
          2,0; 2,1; 2,2
zone:     cam
          1,4; 2,13; 1,6; 2,14
zone:     non_cam_kirk_hz
          1,0; 1,6; 1,9; 1,10; 1,11; 1,12
zone:     non_cam_odr3_sz
          2,0; 2,1; 2,14; 2,11
zone:     non_cam_odr4_sz
          2,0; 2,1; 2,15; 2,11
zone:     non_cam_perfl_sz
          2,0; 2,1; 2,6
zone:     non_cam_soldev3_hz
          1,2; 1,6; 1,9; 1,10; 1,11; 1,12
zone:     non_cam_tuvok_hz
          1,6; 1,8; 1,9; 1,10; 1,11; 1,12
zone:     oracle_9irac
          2,11; 2,5; 2,4
zone:     oracle_bones_zone
          2,0; 2,1; 2,9; 2,8
zone:     oracle_kirk_zone
          2,0; 2,1; 2,10
zone:     perflzone
          2,0; 2,1; 3,0; 3,1
zone:     riker_zone
          2,12; 2,0; 2,1; 2,11

Effective configuration:
cfg:      sv3k_cam
zone:     adm_zone
          2,0
          2,1
```

```

                2,2
zone:  cam      1,4
                2,13
                1,6
                2,14
zone:  non_cam_kirk_hz
                1,0
                1,6
                1,9
                1,10
                1,11
                1,12
zone:  non_cam_odr3_sz
                2,0
                2,1
                2,14
                2,11
zone:  non_cam_odr4_sz
                2,0
                2,1
                2,15
                2,11
zone:  non_cam_soldev3_hz
                1,2
                1,6
                1,9
                1,10
                1,11
                1,12
zone:  non_cam_tuvok_hz
                1,6
                1,8
                1,9
                1,10
                1,11
                1,12
zone:  oracle_9irac
                2,11
                2,5
                2,4
zone:  oracle_bones_zone
                2,0
                2,1
                2,9
                2,8
zone:  oracle_kirk_zone
                2,0
                2,1
                2,10
zone:  perflzone
                2,0
                2,1
                3,0
                3,1
zone:  riker_zone
                2,12
                2,0
                2,1
                2,11

```

Switch 2

Fabric OS (tm) Release v3.0.2f

login: admin
Password:

```

casasw9:admin> switchshow
switchName:  casasw9
switchType:  17.2
switchState: Online
switchMode:  Native
switchRole:  Subordinate
switchDomain: 1

```



```

switchId:      fffc01
switchWwn:     10:00:00:60:69:5a:09:46
switchBeacon:  OFF
Zoning:       ON (sv3k_cam)
port 0: id N2 Online      F-Port 50:00:1f:e1:50:00:a1:dc
port 1: id N2 Online      F-Port 50:00:1f:e1:50:00:a1:d8
port 2: id N2 No_Light
port 3: id N2 No_Light
port 4: id N1 Online      F-Port 10:00:00:00:c9:24:67:69
port 5: id N1 Online      F-Port 10:00:00:00:c9:21:97:af
port 6: id N2 No_Light
port 7: id N1 Online      F-Port 50:06:0e:80:03:75:39:05
port 8: id N2 No_Light
port 9: id N2 Online      F-Port 50:06:0b:00:00:12:dc:78
port 10: id N2 Online     F-Port 50:06:0b:00:00:12:dc:70
port 11: -- 1G Diag_Flt   Disabled
port 12: id N2 No_Light
port 13: id N1 Online     E-Port 10:00:00:60:69:15:03:b0 "casasw2" (upstream)
port 14: id N2 Online     F-Port 21:00:00:e0:8b:06:cc:85
port 15: id N2 Online     F-Port 21:00:00:e0:8b:06:cd:85
casasw9:admin> zoneshow
Defined configuration:
cfg:  sv3k_cam
      cam; non_cam_kirk_hz; non_cam_odr3_sz; non_cam_odr4_sz;
      non_cam_soldev3_hz; non_cam_tuvok_hz; perf2zone; riker_zone;
      oracle_kirk_zone; oracle_bones_zone; oracle_9irac
zone:  cam      1,13; 2,6; 2,4; 1,14
zone:  non_cam_kirk_hz
      2,0; 2,6; 2,9; 2,10; 2,11; 2,12
zone:  non_cam_odr3_sz
      1,0; 1,1; 1,15; 1,11; 1,7
zone:  non_cam_odr4_sz
      1,0; 1,1; 1,14; 1,11; 1,7
zone:  non_cam_perfl_sz
      1,0; 1,1; 1,6
zone:  non_cam_soldev3_hz
      2,2; 2,6; 2,9; 2,10; 2,11; 2,12
zone:  non_cam_tuvok_hz
      2,6; 2,8; 2,9; 2,10; 2,11; 2,12
zone:  oracle_9irac
      1,11; 1,4; 1,5
zone:  oracle_bones_zone
      1,0; 1,1; 1,9
zone:  oracle_kirk_zone
      1,0; 1,1; 1,10
zone:  perf2zone
      1,0; 1,1; 3,0; 3,1
zone:  riker_zone
      1,0; 1,1; 1,12; 1,11

Effective configuration:
cfg:  sv3k_cam
zone:  cam      1,13
      2,6
      2,4
      1,14
zone:  non_cam_kirk_hz
      2,0
      2,6
      2,9
      2,10
      2,11
      2,12
zone:  non_cam_odr3_sz
      1,0
      1,1
      1,15
      1,11
      1,7
zone:  non_cam_odr4_sz
      1,0
      1,1
      1,14
      1,11
      1,7
zone:  non_cam_soldev3_hz
      2,2

```

```
2,6
2,9
2,10
2,11
2,12
zone: non_cam_tuvok_hz
2,6
2,8
2,9
2,10
2,11
2,12
zone: oracle_9irac
1,11
1,4
1,5
zone: oracle_bones_zone
1,0
1,1
1,9
zone: oracle_kirk_zone
1,0
1,1
1,10
zone: perf2zone
1,0
1,1
3,0
3,1
zone: riker_zone
1,0
1,1
1,12
1,11
```

appendix d: PDC Installation Log

```
[root@racnode1 Log]# cat Install.log
Wed Oct 15 10:40:57 PDT 2003 -
+++++
Wed Oct 15 10:40:57 PDT 2003 - STARTED HPPostos.sh - Wed Oct 15 10:40:57 PDT 2003
Wed Oct 15 10:40:57 PDT 2003 -
+++++
Wed Oct 15 10:40:57 PDT 2003 - GETTING THE NUMBER OF NODES IN THE CLUSTER.....
Wed Oct 15 10:40:59 PDT 2003 - User Input for Number of Nodes in the cluster was
2.....
Wed Oct 15 10:40:59 PDT 2003 - GETTING THE NUMBER OF NODES IN THE CLUSTER.....DONE
Wed Oct 15 10:40:59 PDT 2003 -
Wed Oct 15 10:40:59 PDT 2003 - CREATING THE HOST FILE.....
Wed Oct 15 10:40:59 PDT 2003 - Creating the /etc/hosts file.....
Wed Oct 15 10:40:59 PDT 2003 - Creating the /etc/hosts file.....Done
Wed Oct 15 10:40:59 PDT 2003 - CREATING THE HOST FILE.....DONE
Wed Oct 15 10:40:59 PDT 2003 -
Wed Oct 15 10:40:59 PDT 2003 - CREATING THE RHOSTS FILE.....
Wed Oct 15 10:40:59 PDT 2003 - Creating the /etc/rhosts file.....
Wed Oct 15 10:40:59 PDT 2003 - Creating the /etc/rhosts file.....Done
Wed Oct 15 10:40:59 PDT 2003 - CREATING THE RHOSTS FILE.....DONE
Wed Oct 15 10:40:59 PDT 2003 -
Wed Oct 15 10:40:59 PDT 2003 - CREATING RHOSTS FOR ROOT AND ORACLE ACCOUNT.....
Wed Oct 15 10:40:59 PDT 2003 - Creating the /etc/hosts.equiv file.....
Wed Oct 15 10:40:59 PDT 2003 - Creating the /etc/hosts.equiv file.....Done
Wed Oct 15 10:40:59 PDT 2003 - Creating the /root/.rhosts file.....
Wed Oct 15 10:40:59 PDT 2003 - Creating the /root/.rhosts file.....Done
Wed Oct 15 10:40:59 PDT 2003 - Creating the /home/oracle/.rhosts file.....
Wed Oct 15 10:40:59 PDT 2003 - Creating the /home/oracle/.rhosts file.....Done
Wed Oct 15 10:40:59 PDT 2003 - Setting permissions for the /home/oracle/.rhosts
file.....
Wed Oct 15 10:40:59 PDT 2003 - Setting permissions for the /home/oracle/.rhosts
file.....Done
Wed Oct 15 10:40:59 PDT 2003 - CREATING RHOSTS FOR ROOT AND ORACLE ACCOUNT.....DONE
Wed Oct 15 10:40:59 PDT 2003 -
Wed Oct 15 10:40:59 PDT 2003 - CREATING PROFILE FILES FOR ROOT AND ORACLE.....
Wed Oct 15 10:40:59 PDT 2003 - Updating the .profile file for root
account.....
Wed Oct 15 10:40:59 PDT 2003 - Updating the .profile file for root
account.....Done
Wed Oct 15 10:40:59 PDT 2003 - Updating the .bash_profile file for root
account.....
Wed Oct 15 10:40:59 PDT 2003 - Updating the .bash_profile file for root
account.....Done
Wed Oct 15 10:40:59 PDT 2003 - Updating the .profile file for oracle
account.....
Wed Oct 15 10:40:59 PDT 2003 - Updating the .profile file for oracle
account.....Done
Wed Oct 15 10:40:59 PDT 2003 - Updating the .bash_profile file for oracle
account.....
Wed Oct 15 10:40:59 PDT 2003 - Updating the .bash_profile file for oracle
account.....Done
Wed Oct 15 10:40:59 PDT 2003 - CREATING PROFILE FILES FOR ROOT AND ORACLE.....DONE
Wed Oct 15 10:40:59 PDT 2003 -
Wed Oct 15 10:40:59 PDT 2003 - UPDATING THE NUMBER OF NODES FOR CLUSTER CHECK
UTILITY.....
Wed Oct 15 10:40:59 PDT 2003 - Updating the Number of nodes in the cluster in
/users/HPScripts/CVU/clcheck.conf.....
Wed Oct 15 10:40:59 PDT 2003 - Updating the Number of nodes in the cluster in
/users/HPScripts/CVU/clcheck.conf.....
Wed Oct 15 10:40:59 PDT 2003 - UPDATING THE NUMBER OF NODES FOR CLUSTER CHECK
UTILITY.....DONE
Wed Oct 15 10:40:59 PDT 2003 -
Wed Oct 15 10:40:59 PDT 2003 - INSERTING THE MISSING NICS IN THE MODULES.CONF.....
Wed Oct 15 10:40:59 PDT 2003 - Inserting the missing NICs in the modules.conf
file.....
Wed Oct 15 10:40:59 PDT 2003 - Inserting the missing NICs in the modules.conf
file.....Done
Wed Oct 15 10:40:59 PDT 2003 - INSERTING THE MISSING NICS IN THE
MODULES.CONF.....DONE
Wed Oct 15 10:40:59 PDT 2003 -
Wed Oct 15 10:40:59 PDT 2003 - CONFIGURING NIC TEAMING.....
Wed Oct 15 10:41:02 PDT 2003 - Updating the NIC Teaming Environment Variable in
/users/HPScripts/CVU/clcheck.conf...
```

```

Wed Oct 15 10:41:02 PDT 2003 - Updating the NIC Teaming Environment Variable in
/users/HPScripts/CVU/clcheck.conf...
Wed Oct 15 10:41:02 PDT 2003 - CONFIGURING NIC TEAMING.....DONE
Wed Oct 15 10:41:02 PDT 2003 -
Wed Oct 15 10:41:02 PDT 2003 -
+++++
Wed Oct 15 10:41:02 PDT 2003 - COMPLETED HPPostos.sh - Wed Oct 15 10:41:02 PDT 2003
Wed Oct 15 10:41:02 PDT 2003 -
+++++
Wed Oct 15 13:28:11 PDT 2003 -
+++++
Wed Oct 15 13:28:11 PDT 2003 - STARTED HPInstall.sh - Wed Oct 15 13:28:11 PDT 2003
Wed Oct 15 13:28:11 PDT 2003 -
+++++
Wed Oct 15 13:28:11 PDT 2003 - INSTALLING THE HP APPROVED AND TESTED E100 NIC
DRIVERS.....
Wed Oct 15 13:28:11 PDT 2003 - Copying the HP Tested and Approved e100 Linux NIC
Driver Sources to /tmp on racnode2.
Wed Oct 15 13:28:11 PDT 2003 - Copying the HP Tested and Approved e100 Linux NIC
Driver Sources to /tmp on racnode2.
Wed Oct 15 13:28:11 PDT 2003 - Installing the HP Tested and Approved e100 Linux
NIC Driver on racnode1.....
Wed Oct 15 13:28:50 PDT 2003 - Installing the HP Tested and Approved e100 Linux
NIC Driver on racnode1.....Done
Wed Oct 15 13:28:50 PDT 2003 - Installing the HP Tested and Approved e100 Linux
NIC Driver on racnode2.....
Wed Oct 15 13:29:18 PDT 2003 - Installing the HP Tested and Approved e100 Linux
NIC Driver on racnode2.....Done
Wed Oct 15 13:29:18 PDT 2003 - INSTALLING THE HP APPROVED AND TESTED E100 NIC
DRIVERS.....DONE
Wed Oct 15 13:29:18 PDT 2003 -
Wed Oct 15 13:29:18 PDT 2003 - INSTALLING THE HP APPROVED AND TESTED E1000 NIC
DRIVERS.....
Wed Oct 15 13:29:18 PDT 2003 - Copying the HP Tested and Approved e1000 Linux
NIC Driver Sources to /tmp on racnode2
Wed Oct 15 13:29:18 PDT 2003 - Copying the HP Tested and Approved e1000 Linux
NIC Driver Sources to /tmp on racnode2
Wed Oct 15 13:29:18 PDT 2003 - Installing the HP Tested and Approved e1000 Linux
NIC Driver on racnode1.....
Wed Oct 15 13:29:41 PDT 2003 - Installing the HP Tested and Approved e1000 Linux
NIC NIC Driver on racnode1.....Done
Wed Oct 15 13:29:41 PDT 2003 - Installing the HP Tested and Approved e1000 Linux
NIC Driver on racnode2.....
Wed Oct 15 13:30:06 PDT 2003 - Installing the HP Tested and Approved e1000 Linux
NIC NIC Driver on racnode2.....Done
Wed Oct 15 13:30:06 PDT 2003 - INSTALLING THE HP APPROVED AND TESTED E1000 NIC
DRIVERS.....DONE
Wed Oct 15 13:30:06 PDT 2003 -
Wed Oct 15 13:30:06 PDT 2003 - INSTALLING THE HP APPROVED AND TESTED BCM5700 NIC
DRIVERS.....
Wed Oct 15 13:30:06 PDT 2003 - Copying the HP Tested and Approved bcm5700 Linux
NIC Driver Sources to /tmp on racnod
Wed Oct 15 13:30:06 PDT 2003 - Copying the HP Tested and Approved bcm5700 Linux
NIC Driver Sources to /tmp on racnod
Wed Oct 15 13:30:06 PDT 2003 - Installing the HP Tested and Approved bcm5700
Linux NIC Driver on racnode1.....
Wed Oct 15 13:30:23 PDT 2003 - Installing the HP Tested and Approved bcm5700
Linux NIC Driver on racnode1.....Done
Wed Oct 15 13:30:23 PDT 2003 - Installing the HP Tested and Approved bcm5700
Linux NIC Driver on racnode2.....
Wed Oct 15 13:30:40 PDT 2003 - Installing the HP Tested and Approved bcm5700
Linux NIC Driver on racnode2.....Done
Wed Oct 15 13:30:40 PDT 2003 - INSTALLING THE HP APPROVED AND TESTED BCM5700 NIC
DRIVERS.....DONE
Wed Oct 15 13:30:40 PDT 2003 -
Wed Oct 15 13:30:40 PDT 2003 - INSTALLING THE HP APPROVED AND TESTED BONDING
DRIVERS.....
Wed Oct 15 13:30:40 PDT 2003 - Copying the HP Tested and Approved bonding Driver
Sources to /tmp on racnode2.....
Wed Oct 15 13:30:40 PDT 2003 - Copying the HP Tested and Approved bonding Driver
Sources to /tmp on racnode2.....Don
Wed Oct 15 13:30:40 PDT 2003 - Installing the HP Tested and Approved bonding
Driver on racnode1.....
Wed Oct 15 13:30:49 PDT 2003 - Installing the HP Tested and Approved bonding
Driver on racnode1.....Done
Wed Oct 15 13:30:49 PDT 2003 - Installing the HP Tested and Approved bonding
Driver on racnode2.....

```

```

Wed Oct 15 13:30:58 PDT 2003 - Installing the HP Tested and Approved bonding
Driver on racnode2.....Done
Wed Oct 15 13:30:58 PDT 2003 - INSTALLING THE HP APPROVED AND TESTED BONDING
DRIVERS.....DONE
Wed Oct 15 13:30:58 PDT 2003 -
Wed Oct 15 13:30:58 PDT 2003 - UPDATING THE CONFIGURATION FILES TO LOAD ALL THE
DRIVERS.....
Wed Oct 15 13:30:58 PDT 2003 - Updating the configuration files to load all the
drivers on racnode1.....
Wed Oct 15 13:30:59 PDT 2003 - Updating the configuration files to load all the
drivers on racnode1.....Done
Wed Oct 15 13:30:59 PDT 2003 - Updating the configuration files to load all the
drivers on racnode2.....
Wed Oct 15 13:30:59 PDT 2003 - Updating the configuration files to load all the
drivers on racnode2.....Done
Wed Oct 15 13:30:59 PDT 2003 - UPDATING THE CONFIGURATION FILES TO LOAD ALL THE
DRIVERS.....DONE
Wed Oct 15 13:30:59 PDT 2003 -
Wed Oct 15 13:30:59 PDT 2003 - GETTING THE SECURE PATH OPTION FROM THE USER.....
Wed Oct 15 13:31:02 PDT 2003 - User Inputed 'No' for Secure Path Software.....
Wed Oct 15 13:31:02 PDT 2003 - GETTING THE SECURE PATH OPTION FROM THE
USER.....DONE
Wed Oct 15 13:31:02 PDT 2003 -
Wed Oct 15 13:31:02 PDT 2003 - GETTING THE CFS OPTION FROM THE USER.....
Wed Oct 15 13:31:07 PDT 2003 - User Inputed 'Yes' for OCFS Option.....
Wed Oct 15 13:31:07 PDT 2003 - Required Oracle CFS files are available in the
/tmp directory.....
Wed Oct 15 13:31:07 PDT 2003 - Copying the Oracle CFS Enterprise for Errata 24
kernel to racnode2.....
Wed Oct 15 13:31:07 PDT 2003 - Copying the Oracle CFS Enterprise for Errata 24
kernel to racnode2.....Done
Wed Oct 15 13:31:07 PDT 2003 - Copying the Oracle CFS Tools for Errata 24 kernel
to racnode2.....
Wed Oct 15 13:31:07 PDT 2003 - Copying the Oracle CFS Tools for Errata 24 kernel
to racnode2.....Done
Wed Oct 15 13:31:07 PDT 2003 - Copying the Oracle CFS Support for Errata 24
kernel to racnode2.....
Wed Oct 15 13:31:08 PDT 2003 - Copying the Oracle CFS Support for Errata 24
kernel to racnode2.....Done
Wed Oct 15 13:31:08 PDT 2003 - Installing the Oracle CFS Enterprise, Tools and
Support RPMs on racnode1.....
Wed Oct 15 13:31:14 PDT 2003 - Installing the Oracle CFS Enterprise, Tools and
Support RPMs on racnode1.....Done
Wed Oct 15 13:31:14 PDT 2003 - Installing the Oracle CFS Enterprise, Tools and
Support RPMs on racnode2.....
Wed Oct 15 13:31:20 PDT 2003 - Installing the Oracle CFS Enterprise, Tools and
Support RPMs on racnode2.....Done
Wed Oct 15 13:31:20 PDT 2003 - GETTING THE CFS OPTION FROM THE USER.....DONE
Wed Oct 15 13:31:20 PDT 2003 -
Wed Oct 15 13:31:37 PDT 2003 - REBOOTING ALL THE NODES IN THE CLUSTER SERVER TO LOAD
ALL THE DRIVERS.....
Wed Oct 15 13:31:37 PDT 2003 - Rebooting racnode2.....
Wed Oct 15 13:31:37 PDT 2003 - Rebooting racnode1.....
Wed Oct 15 14:08:15 PDT 2003 -
+++++
Wed Oct 15 14:08:15 PDT 2003 - STARTED HPInstall.sh - Wed Oct 15 14:08:15 PDT 2003
Wed Oct 15 14:08:15 PDT 2003 -
+++++
Wed Oct 15 14:08:15 PDT 2003 - UPDATING THE SYSTEM FOR CFS OPTION.....
Wed Oct 15 14:08:15 PDT 2003 - Updating the System for Oracle CFS on
racnode1.....
Wed Oct 15 14:08:15 PDT 2003 - Updating the System for Oracle CFS on
racnode2.....
Wed Oct 15 14:08:16 PDT 2003 - Formating the /dev/sda filesystem.....
Wed Oct 15 14:16:09 PDT 2003 - Formating the /dev/sda filesystem.....Done
Wed Oct 15 14:16:09 PDT 2003 - Executing the /usr/bin/ocfstool.....
Wed Oct 15 14:16:53 PDT 2003 - Executing the /usr/bin/ocfstool.....Done
Wed Oct 15 14:16:54 PDT 2003 - Updating the System for Oracle CFS on
racnode1.....Done
Wed Oct 15 14:16:56 PDT 2003 - Updating the System for Oracle CFS on
racnode2.....Done
Wed Oct 15 14:16:56 PDT 2003 - UPDATING THE SYSTEM FOR CFS OPTION.....DONE
Wed Oct 15 14:16:56 PDT 2003 -
Wed Oct 15 14:16:56 PDT 2003 - STAGING ORACLE INSTALLATION SCRIPTS.....
Wed Oct 15 14:17:36 PDT 2003 - Copying the HP Installation Scripts for Oracle9i
RAC to the tmp directory.....

```

```

Wed Oct 15 14:17:50 PDT 2003 - Copying the HP Installation Scripts for Oracle9i
RAC to the tmp directory.....Done
Wed Oct 15 14:17:50 PDT 2003 - STAGING ORACLE INSTALLATION SCRIPTS.....DONE
Wed Oct 15 14:17:50 PDT 2003 -
Wed Oct 15 14:17:50 PDT 2003 - INSTALLING ORACLE 9i RAC.....
Wed Oct 15 14:35:37 PDT 2003 -
+++++
Wed Oct 15 14:35:37 PDT 2003 - STARTED HPInstall.sh - Wed Oct 15 14:35:37 PDT 2003
Wed Oct 15 14:35:37 PDT 2003 -
+++++
Wed Oct 15 14:35:38 PDT 2003 - INSTALLING ORACLE 9i RAC.....
Wed Oct 15 14:53:07 PDT 2003 - INSTALLING ORACLE 9i RAC.....DONE
Wed Oct 15 14:53:07 PDT 2003 -
Wed Oct 15 14:53:07 PDT 2003 - REMOVING THE WATCHDOG MODULE.....
Wed Oct 15 14:53:07 PDT 2003 - Removing the Watchdog modules on racnode1.....
Wed Oct 15 14:53:08 PDT 2003 - Removing the Watchdog modules on
racnode1.....Done
Wed Oct 15 14:53:08 PDT 2003 - REMOVING THE WATCHDOG MODULE.....DONE
Wed Oct 15 14:53:08 PDT 2003 -
Wed Oct 15 14:53:08 PDT 2003 - EXTRACTING THE ORACLE 9.2.0.3 PATCHSET.....
Wed Oct 15 14:53:08 PDT 2003 - Creating a temporary directory for the Oracle
9.2.0.3 PatchSet.....
Wed Oct 15 14:53:08 PDT 2003 - Creating a temporary directory for the Oracle
9.2.0.3 PatchSet.....Done
Wed Oct 15 14:53:08 PDT 2003 - Extracting the Oracle 9.2.0.3 Patch Set.....
Wed Oct 15 14:53:23 PDT 2003 - Extracting the Oracle 9.2.0.3 Patch
Set.....Done
Wed Oct 15 14:53:31 PDT 2003 - EXTRACTING THE ORACLE 9.2.0.3 PATCHSET.....DONE
Wed Oct 15 14:53:31 PDT 2003 -
Wed Oct 15 14:53:31 PDT 2003 - INSTALLING THE CLUSTER MANAGER PATCH.....
Wed Oct 15 14:53:31 PDT 2003 - Installing Oracle 9.2.0.3 Cluster Manager
Patch.....
Wed Oct 15 14:56:09 PDT 2003 - Installing Oracle 9.2.0.3 Cluster Manager
Patch.....Done
Wed Oct 15 14:56:09 PDT 2003 - INSTALLING THE CLUSTER MANAGER PATCH.....DONE
Wed Oct 15 14:56:09 PDT 2003 -
Wed Oct 15 14:56:09 PDT 2003 - INSTALLING THE ORACLE 9.2.0.3 DATABASE PATCHSET.....
Wed Oct 15 14:56:44 PDT 2003 - Installing Oracle Database 9.2.0.3 Patchset.....
Wed Oct 15 15:05:52 PDT 2003 - INSTALLING THE ORACLE 9.2.0.3 DATABASE
PATCHSET.....DONE
Wed Oct 15 15:05:52 PDT 2003 -
Wed Oct 15 15:05:52 PDT 2003 - INSTALLING THE GSD PATCH FOR ORACLE 9.2.0.3.....
Wed Oct 15 15:06:01 PDT 2003 - INSTALLING THE GSD PATCH FOR ORACLE 9.2.0.3.....DONE
Wed Oct 15 15:06:01 PDT 2003 -
Wed Oct 15 15:06:01 PDT 2003 - COPYING ORACLE TO REMOTE NODES.....
Wed Oct 15 15:55:46 PDT 2003 - COPYING ORACLE TO REMOTE NODES.....DONE
Wed Oct 15 15:55:46 PDT 2003 - CREATING ORACLE 9i RAC SAMPLE DATABASE.....
Wed Oct 15 16:20:27 PDT 2003 - CREATING ORACLE 9i RAC SAMPLE DATABASE.....DONE
Wed Oct 15 16:20:27 PDT 2003 -
Wed Oct 15 16:20:27 PDT 2003 -
+++++
Wed Oct 15 16:20:27 PDT 2003 - COMPLETED HPInstall.sh - Wed Oct 15 16:20:27 PDT 2003
Wed Oct 15 16:20:27 PDT 2003 -
+++++
[root@racnode1 Log]#

```

appendix e: Oracle® Database Configuration

```
Oracle9i Enterprise Edition Release 9.2.0.3.0 - Production
With the Partitioning, Real Application Clusters, Oracle Label Security, OLAP
and Oracle Data Mining options
JServer Release 9.2.0.3.0 - Production
```

```
[root@racnode1 qia2300]# su - oracle
[oracle@racnode1 oracle]$ sqlplus /nolog
```

```
SQL*Plus: Release 9.2.0.3.0 - Production on Thu Oct 23 14:45:27 2003
```

```
Copyright (c) 1982, 2002, Oracle Corporation. All rights reserved.
```

```
SQL> connect / as sysdba
Connected.
SQL> select * from v$active_instances;
```

```
INST_NUMBER
```

```
-----
```

```
INST_NAME
```

```
-----
```

```
1
racnode1:ORCL1
```

```
2
racnode2:ORCL2
```

```
SQL> select * from v$thread;
```

THREAD#	STATUS	ENABLED	GROUPS	INSTANCE	OPEN_TIME	CURRENT_GROUP#
1	OPEN	PUBLIC	2	ORCL1	16-OCT-03	1
61		9247978	23-OCT-03		15-OCT-03	0
2	OPEN	PUBLIC	2	ORCL2	23-OCT-03	4
30		9041776	23-OCT-03		15-OCT-03	0

THREAD#	STATUS	ENABLED	GROUPS	INSTANCE	OPEN_TIME	CURRENT_GROUP#
SEQUENCE#	CHECKPOINT_CHANGE#	CHECKPOIN	ENABLE_CHANGE#	ENABLE_TI	DISABLE_CHANGE#	

```
SQL> select count(*) from v$session;
```

```
COUNT(*)
-----
118
```

```
[oracle@racnode1 admin]$ cat tnsnames.ora
#Generated tnsnames.ora from /opt/oracle/util/tnsnames.sh script.
```

```
#Localnode service connectivity
```

```
ORCL1 =
  (DESCRIPTION =
    (ADDRESS_LIST =
      (ADDRESS = (PROTOCOL = TCP)(HOST = racnode1 )(PORT = 1521))
    )
    (CONNECT_DATA =
      (INSTANCE_NAME = ORCL1)
      (SERVICE_NAME = ORCL)
    )
  )
```

```

EXTPROC_CONNECTION_DATA =
  (DESCRIPTION =
    (ADDRESS_LIST =
      (ADDRESS = (PROTOCOL = IPC)(KEY = EXTPROC))
    )
    (CONNECT_DATA =
      (SID = PLSExtProc)
      (PRESENTATION = RO)
    )
  )

#REMOTE_LISTENER configuration (assuming REMOTE_LISTENERS = LISTENERS_ORCL)
LISTENERS_ORCL =
  (DESCRIPTION =
    (ADDRESS_LIST =
      (ADDRESS = (PROTOCOL = TCP)(HOST = racnode1)(PORT = 1521))
      (ADDRESS = (PROTOCOL = TCP)(HOST = racnode2)(PORT = 1521))
    )
  )

#Configure a single clusterwide service with load-balance, failover and TAF enabled.
ORCL =
  (DESCRIPTION =
    (ADDRESS_LIST =
      (LOAD_BALANCE = yes)
      (FAILOVER = on)
      (ADDRESS = (PROTOCOL = TCP)(HOST = racnode1)(PORT = 1521))
      (ADDRESS = (PROTOCOL = TCP)(HOST = racnode2)(PORT = 1521))
    )
    (CONNECT_DATA =
      (SERVICE_NAME = ORCL)
      (FAILOVER_MODE = (TYPE = SELECT)(METHOD = BASIC)(RETRIES = 20)(DELAY = 20))
    )
  )

```

```

[oracle@racnode1 admin]$ cat listener.ora
#Generated listener.ora from /opt/oracle/util/listener.sh script.

```

```

LISTENER =
  (DESCRIPTION_LIST =
    (DESCRIPTION =
      (ADDRESS_LIST =
        (ADDRESS = (PROTOCOL = IPC)(KEY = EXTPROC))
      )
      (ADDRESS_LIST =
        (ADDRESS = (PROTOCOL = TCP)(HOST = racnode1 )(PORT =
1521))
      )
    )
  )

SID_LIST_LISTENER =
  (SID_LIST =
    (SID_DESC =
      (SID_NAME = PLSExtProc)
      (ORACLE_HOME = /opt/oracle/product/server32/9.2.0)
      (PROGRAM = extproc)
    )
    (SID_DESC =
      (ORACLE_HOME = /opt/oracle/product/server32/9.2.0)
      (SID_NAME = ORCL1)
    )
  )
[oracle@racnode1 admin]$

```

```

[oracle@racnode1 admin]$ df

```

Filesystem	1k-blocks	Used	Available	Use%	Mounted on
/dev/cciss/c0d0p1	5260752	1601896	3391620	33%	/
/dev/cciss/c0d0p5	4068064	35196	3826220	1%	/home
/dev/cciss/c0d0p2	9051976	4968952	3623208	58%	/opt
none	2444980	0	2444980	0%	/dev/shm
/dev/cciss/c0d0p11	1060144	654372	351920	66%	/tmp
/dev/cciss/c0d0p3	5160496	33600	4864756	1%	/users
/dev/cciss/c0d0p6	2112288	73224	1931764	4%	/var
/dev/sda	28844160	2696320	26147840	10%	/ocfs01


```

[oracle@racnode1 admin]$ ls -al /ocfs01
total 2644271
drwxrwxr-x    1 oracle  dba           131072 Oct 15 16:33 .
drwxr-xr-x   23 root    root           4096 Oct 15 16:33 ..
-rw-r-----    1 oracle  dba    1048584192 Oct 17 10:35 BFTEST.dbf
-rw-r--r--    1 oracle  dba         12288 Oct 15 16:07 CmDiskFile
-rw-r-----    1 oracle  dba    12247040 Oct 15 15:59 control01.ctl
-rw-r-----    1 oracle  dba    12247040 Oct 15 15:59 control02.ctl
-rw-r-----    1 oracle  dba    12247040 Oct 15 15:59 control03.ctl
-rw-r-----    1 oracle  dba    20979712 Oct 15 15:59 cwmlite01.dbf
-rw-r-----    1 oracle  dba    20979712 Oct 15 15:59 drsys01.dbf
-rw-r-----    1 oracle  dba    125837312 Oct 15 15:59 example01.dbf
-rw-r-----    1 oracle  dba    26222592 Oct 15 15:59 indx01.dbf
-rw-r-----    1 oracle  dba    20979712 Oct 15 15:59 odm01.dbf
-rw-r-----    1 oracle  dba    104858112 Oct 15 15:59 redo01_1.log
-rw-r-----    1 oracle  dba    104858112 Oct 15 15:59 redo01_2.log
-rw-r-----    1 oracle  dba    104858112 Oct 15 16:17 redo02_1.log
-rw-r-----    1 oracle  dba    104858112 Oct 15 16:17 redo02_2.log
-rw-r-----    1 oracle  dba         3584 Oct 15 16:17 spfile01.ora
-rwxr-xr-x    1 oracle  dba    10614784 Oct 15 16:18 srvConfig.loc
-rw-r-----    1 oracle  dba    293609472 Oct 17 10:38 system01.dbf
-rw-r-----    1 oracle  dba    71311360 Oct 17 16:09 temp01.dbf
-rw-r-----    1 oracle  dba    10493952 Oct 15 15:59 tools01.dbf
-rw-r-----    1 oracle  dba    277880832 Oct 23 02:06 undotbs01.dbf
-rw-r-----    1 oracle  dba    209723392 Oct 15 15:59 undotbs02.dbf
-rw-r-----    1 oracle  dba    26222592 Oct 15 15:59 users01.dbf
-rw-r-----    1 oracle  dba    20979712 Oct 15 15:59 xdb01.dbf

```

OCFS Information

The image displays two screenshots of the OCFS Tool application interface.

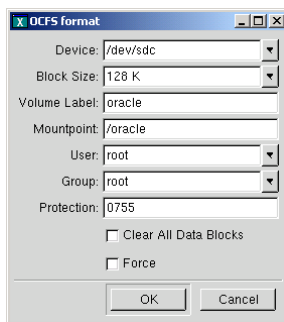
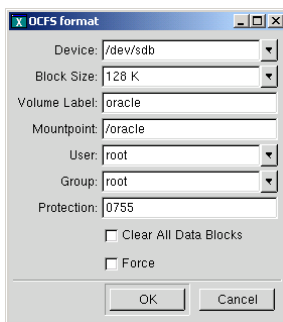
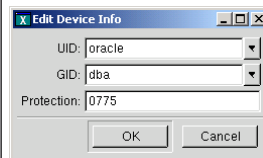
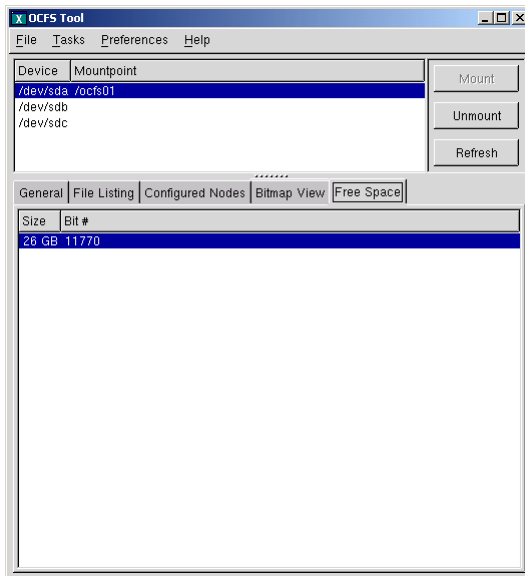
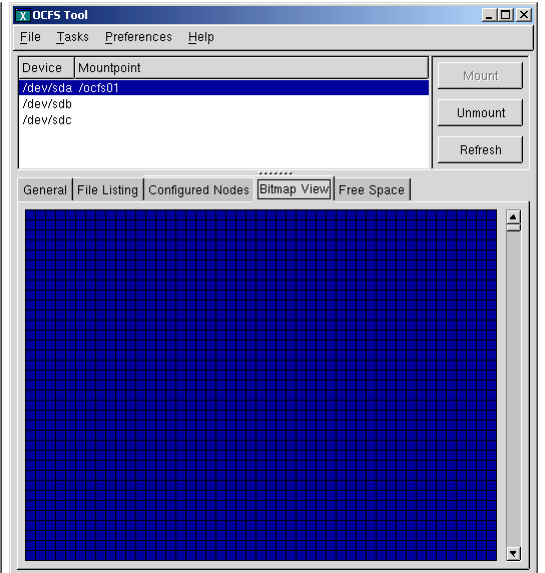
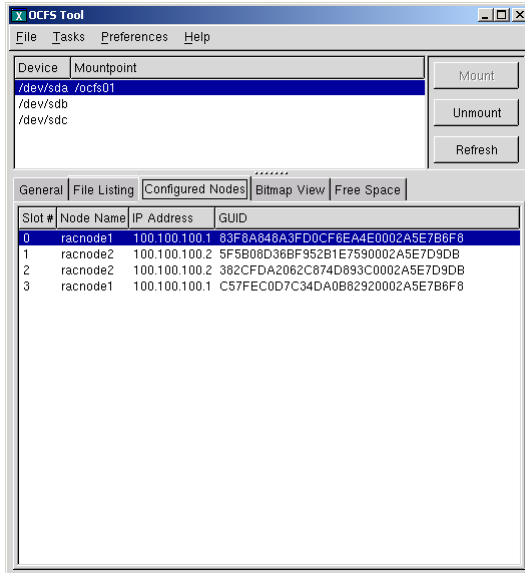
Left Screenshot (General Tab):

- Device:** /dev/sda
- Mountpoint:** /ocfs01
- Buttons:** Mount, Unmount, Refresh
- General Tab Information:**
 - Version: 1.2
 - Mountpoint: /ocfs01
 - Volume Length: 27.5 GB (29538385920b)
 - Number of Extents: 225345
 - Extent Size: 128 K
 - UID: oracle
 - GID: dba
 - Protection: 0775
 - [Edit...](#)

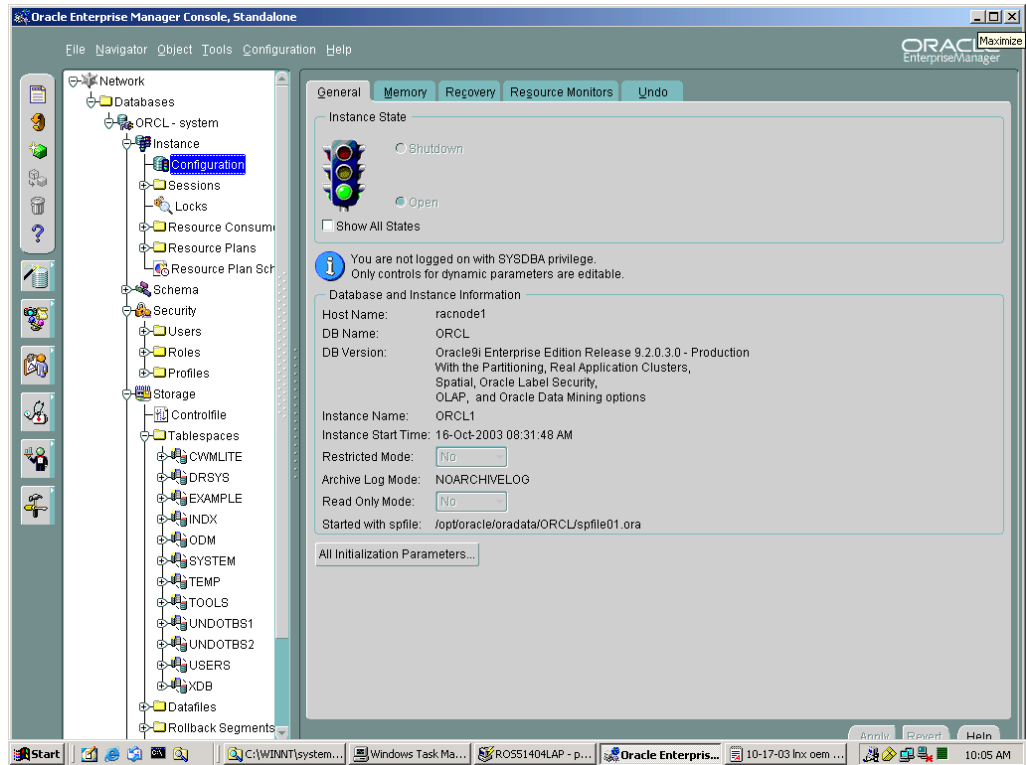
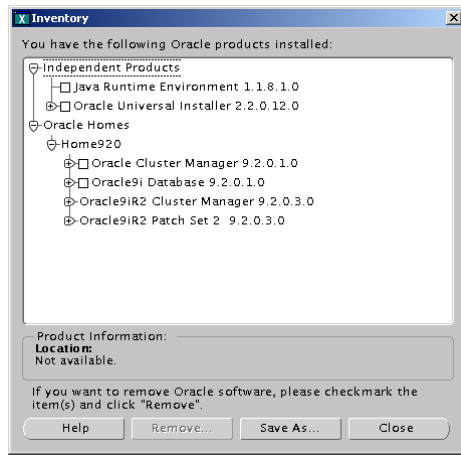
Right Screenshot (File Listing Tab):

- Device:** /dev/sda
- Mountpoint:** /ocfs01
- Buttons:** Mount, Unmount, Refresh
- File Listing:**
 - CmDiskFile
 - control01.ctl
 - control02.ctl
 - control03.ctl
 - cwmlite01.dbf
 - drsys01.dbf
 - example01.dbf
 - indx01.dbf
 - odm01.dbf
 - redo01_1.log
 - redo01_2.log
 - redo02_1.log
 - redo02_2.log
 - spfile01.ora
 - srvConfig.loc
 - system01.dbf
 - temp01.dbf
 - tools01.dbf
 - undotbs01.dbf
 - undotbs02.dbf
 - users01.dbf
 - xdb01.dbf
- Current Master:** 1
- Size:** 12.0 K (12288b)
- Allocation Size:** 128.0 K (131072b)
- User:** oracle
- Group:** dba
- Protection:** 0644
- Opened By:**

Slot #	Node Name
0	racnode1
1	racnode2



Oracle Inventory



Oracle Enterprise Manager Console, Standalone

File Navigator Object Tools Configuration Help

ORACLE Enterprise Manager

General Memory Recovery Resource Monitors Undo

SGA

Shared Pool: 80 MB Advice...

Buffer Cache: 32 MB Advice...

Large Pool: 16 MB

Java Pool: 80 MB

Total SGA: 208.930 MB

SGA Max Size: 241.067 MB

PGA

Aggregate PGA Target: 24 MB Advice...

Current PGA Allocated: 30542 KB

Maximum PGA Allocated (since startup): 31333 KB

Cache Hit Percentage: 100%

The sum of PGA and SGA should be less than the total system memory minus memory required by the OS and other applications.

Apply Revert Help

Start C:\WINNT\sy... Windows Tas... ROSS140HLA... Oracle Enter... 10-17-03 Inx... Command Pro... 10:10 AM

Oracle Enterprise Manager Console, Standalone

File Navigator Object Tools Configuration Help

ORACLE Enterprise Manager

General Memory Recovery Resource Monitors Undo

Control instance crash recovery time

Desired mean time to recover: 5 Minutes Advice...

Current estimated mean time to recover: 38 Seconds

Media Recovery

The database is currently in No Archive Log mode.

Archive Log Mode

Log Archive Filename Format: %l_%.s.dbf

It is recommended that archive log files be written to multiple locations spread across different disks.

Archive Log Destination(s)	Status
/opt/oracle/product/server32/9.2.0/dbs/arch	VALID

In Archive Log mode, hot backups and recovery to the latest time is possible, but you must provide space for logs. If you change the mode to Archive Log mode, you should take a backup immediately. In No Archive Log mode, only cold backups can be taken, and data can be lost in cases of database corruption.

Apply Revert Help

Start C:\WINNT\sy... Windows Tas... ROSS140HLA... Oracle Enter... 10-17-03 Inx... Command Pro... 10:10 AM

Oracle Enterprise Manager Console, Standalone

File Navigator Object Tools Configuration Help

ORACLE Enterprise Manager

General Memory Recovery Resource Monitors Undo

Undo Management: Automatic

Automatic Undo Management

Current Undo Tablespace: UNDOTBS1

Undo Retention: 3 Hours

Undo Space Requirements Estimate

Space Required (MB)

Undo Retention (Minutes)

- Space required, based on maximum undo generation rate
- Space required, based on average undo generation rate
- Current Undo Retention setting

Maximum Undo Generation Rate: 103219 bytes/minute
Average Undo Generation Rate: 2923 bytes/minute

Apply Revert Help

Start C:\WINNT\system... Windows Tas... ROSS1404LA... Oracle Enter... 10-17-03 Inx... Command Pro... 10:10 AM

Oracle Enterprise Manager Console, Standalone

File Navigator Object Tools Configuration Help

ORACLE Enterprise Manager

Name	Type	Extent Management	Size (M)	Used (M)	Used %
CWMLITE	PERMANENT	LOCAL	20,000	0.063	0.31
DRSYS	PERMANENT	LOCAL	20,000	0.063	0.31
EXAMPLE	PERMANENT	LOCAL	120,000	0.063	0.05
INDX	PERMANENT	LOCAL	25,000	0.063	0.25
ODM	PERMANENT	LOCAL	20,000	0.063	0.31
SYSTEM	PERMANENT	LOCAL	270,000	269.125	99.68
TOOLS	PERMANENT	LOCAL	10,000	0.063	0.63
UNDOTBS1	UNDO	LOCAL	200,000	2.375	1.19
UNDOTBS2	UNDO	LOCAL	200,000	1.750	0.88
USERS	PERMANENT	LOCAL	25,000	0.063	0.25
XDB	PERMANENT	LOCAL	20,000	0.063	0.31
TEMP	TEMPORARY	LOCAL	40,000	0.000	0.00

Start C:\WINNT\system... Windows Task Ma... ROSS1404LAP - D... Oracle Enterpris... 10-17-03 Inx oem... 10:06 AM

Oracle Enterprise Manager Console, Standalone

File Navigator Object Tools Configuration Help

ORACLE Enterprise Manager

Sessions
Locks
Resource Consumer Groups
Resource Plans
Resource Plan Schedule
Schema
Security
Users
Roles
Profiles
Storage
Controlfile
Tablespaces
CWMLITE
DRSYS
EXAMPLE
INDX
ODM
SYSTEM
TEMP
TOOLS
UNDOTBS1
UNDOTBS2
USERS
XDB
Datafiles
/opt/oracle/oradata/ORCL/cwmlite01.dbf
/opt/oracle/oradata/ORCL/drsys01.dbf
/opt/oracle/oradata/ORCL/example01.dbf
/opt/oracle/oradata/ORCL/indx01.dbf
/opt/oracle/oradata/ORCL/odm01.dbf
/opt/oracle/oradata/ORCL/system01.dbf

Name	Tablespace	Size (M)	Used (M)
/opt/oracle/oradata/ORCL/system01.dbf	SYSTEM	270.000	268.125
/opt/oracle/oradata/ORCL/undotbs01.dbf	UNDOTBS1	200.000	2.375
/opt/oracle/oradata/ORCL/cwmlite01.dbf	CWMLITE	20.000	0.063
/opt/oracle/oradata/ORCL/drsys01.dbf	DRSYS	20.000	0.063
/opt/oracle/oradata/ORCL/example01.dbf	EXAMPLE	120.000	0.063
/opt/oracle/oradata/ORCL/indx01.dbf	INDX	25.000	0.063
/opt/oracle/oradata/ORCL/odm01.dbf	ODM	20.000	0.063
/opt/oracle/oradata/ORCL/tools01.dbf	TOOLS	10.000	0.063
/opt/oracle/oradata/ORCL/users01.dbf	USERS	25.000	0.063
/opt/oracle/oradata/ORCL/xdbs01.dbf	XDB	20.000	0.063
/opt/oracle/oradata/ORCL/undotbs02.dbf	UNDOTBS2	200.000	1.750
/opt/oracle/oradata/ORCL/temp01.dbf	TEMP	40.000	0.000

Start C:\WINNT\system... Windows Task Ma... ROSS1404LAP - D... Oracle Enterpris... 10-17-03 lnx oem... 10:07 AM

Oracle Enterprise Manager Console, Standalone

File Navigator Object Tools Configuration Help

ORACLE Enterprise Manager

INDX
ODM
SYSTEM
TEMP
TOOLS
UNDOTBS1
UNDOTBS2
USERS
XDB
Datafiles
/opt/oracle/oradata/ORCL/cwmlite01.dbf
/opt/oracle/oradata/ORCL/drsys01.dbf
/opt/oracle/oradata/ORCL/example01.dbf
/opt/oracle/oradata/ORCL/indx01.dbf
/opt/oracle/oradata/ORCL/odm01.dbf
/opt/oracle/oradata/ORCL/system01.dbf
/opt/oracle/oradata/ORCL/temp01.dbf
/opt/oracle/oradata/ORCL/tools01.dbf
/opt/oracle/oradata/ORCL/undotbs01.dbf
/opt/oracle/oradata/ORCL/undotbs02.dbf
/opt/oracle/oradata/ORCL/users01.dbf
/opt/oracle/oradata/ORCL/xdbs01.dbf
Rollback Segments
SYSTEM
Redo Log Groups
1
2
3
4
Archive Logs
Distributed
Warehouse

Name	Tablespace	Extents	Size (M)
SYSTEM	SYSTEM	6	0.375

Start C:\WINNT\system... Windows Task Ma... ROSS1404LAP - D... Oracle Enterpris... 10-17-03 lnx oem... 10:07 AM

Oracle Enterprise Manager Console, Standalone

File Navigator Object Tools Configuration Help

ORACLE Enterprise Manager

INDX
 ODM
 SYSTEM
 TEMP
 TOOLS
 UNDOTBS1
 UNDOTBS2
 USERS
 XDB
 Datafiles
 /opt/oracle/oradata/ORCL/cwmlite01.dbf
 /opt/oracle/oradata/ORCL/drsys01.dbf
 /opt/oracle/oradata/ORCL/example01.dbf
 /opt/oracle/oradata/ORCL/indx01.dbf
 /opt/oracle/oradata/ORCL/odm01.dbf
 /opt/oracle/oradata/ORCL/system01.dbf
 /opt/oracle/oradata/ORCL/temp01.dbf
 /opt/oracle/oradata/ORCL/tools01.dbf
 /opt/oracle/oradata/ORCL/undotbs01.dbf
 /opt/oracle/oradata/ORCL/undotbs02.dbf
 /opt/oracle/oradata/ORCL/users01.dbf
 /opt/oracle/oradata/ORCL/xdb01.dbf
 Rollback Segments
 SYSTEM
 Redo Log Groups
 1
 2
 3
 4
 Archive Logs
 Distributed
 Warehouse

Status	Group	# of Members	Thread	Archived	Size (K)	Sequence	First Change#
Inactive	1	1	1	No	102,400	5	104863
Current	2	1	1	No	102,400	6	136332
Inactive	3	1	2	No	102,400	1	115242
Current	4	1	2	No	102,400	2	136505

Start | C:\WINNT\system... | Windows Task Ma... | ROS51404LAP - D... | Oracle Enterpris... | 10-17-03 lnx oem... | 10:07 AM

Oracle Enterprise Manager Console, Standalone

File Navigator Object Tools Configuration Help

ORACLE Enterprise Manager

INDX
 ODM
 SYSTEM
 TEMP
 TOOLS
 UNDOTBS1
 UNDOTBS2
 USERS
 XDB
 Datafiles
 /opt/oracle/oradata/ORCL/cwmlite01.dbf
 /opt/oracle/oradata/ORCL/drsys01.dbf
 /opt/oracle/oradata/ORCL/example01.dbf
 /opt/oracle/oradata/ORCL/indx01.dbf
 /opt/oracle/oradata/ORCL/odm01.dbf
 /opt/oracle/oradata/ORCL/system01.dbf
 /opt/oracle/oradata/ORCL/temp01.dbf
 /opt/oracle/oradata/ORCL/tools01.dbf
 /opt/oracle/oradata/ORCL/undotbs01.dbf
 /opt/oracle/oradata/ORCL/undotbs02.dbf
 /opt/oracle/oradata/ORCL/users01.dbf
 /opt/oracle/oradata/ORCL/xdb01.dbf
 Rollback Segments
 SYSTEM
 Redo Log Groups
 1
 2
 3
 4
 Archive Logs
 Distributed
 Warehouse

General

Group #: 1

Thread #: 1

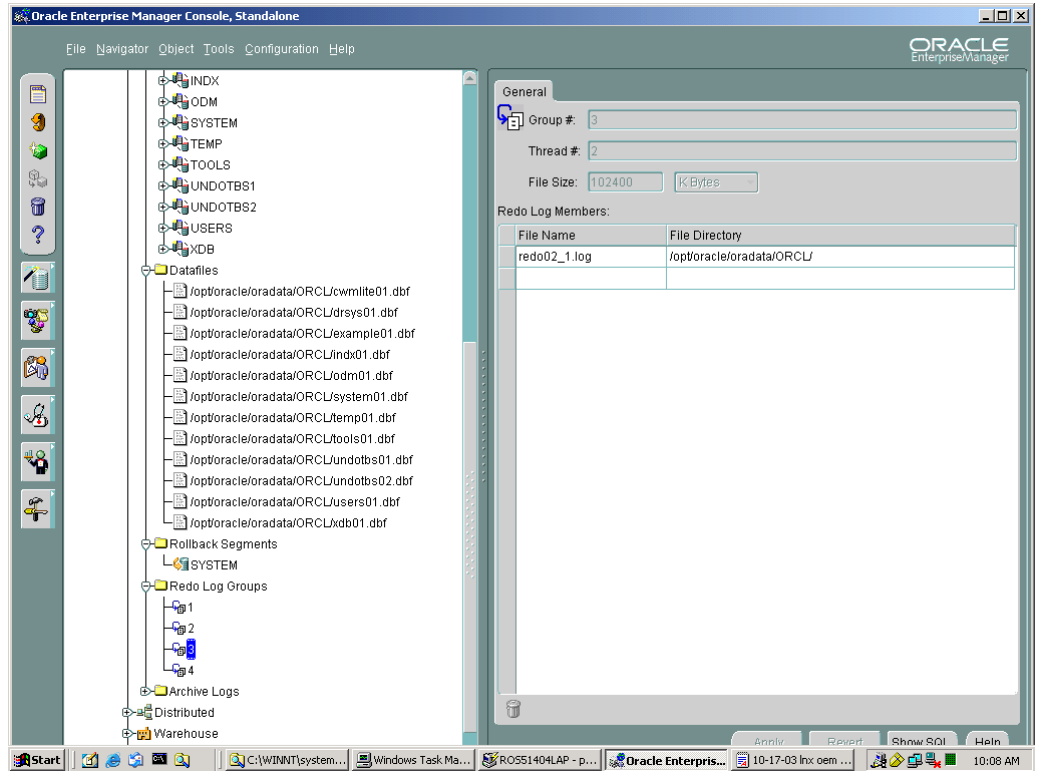
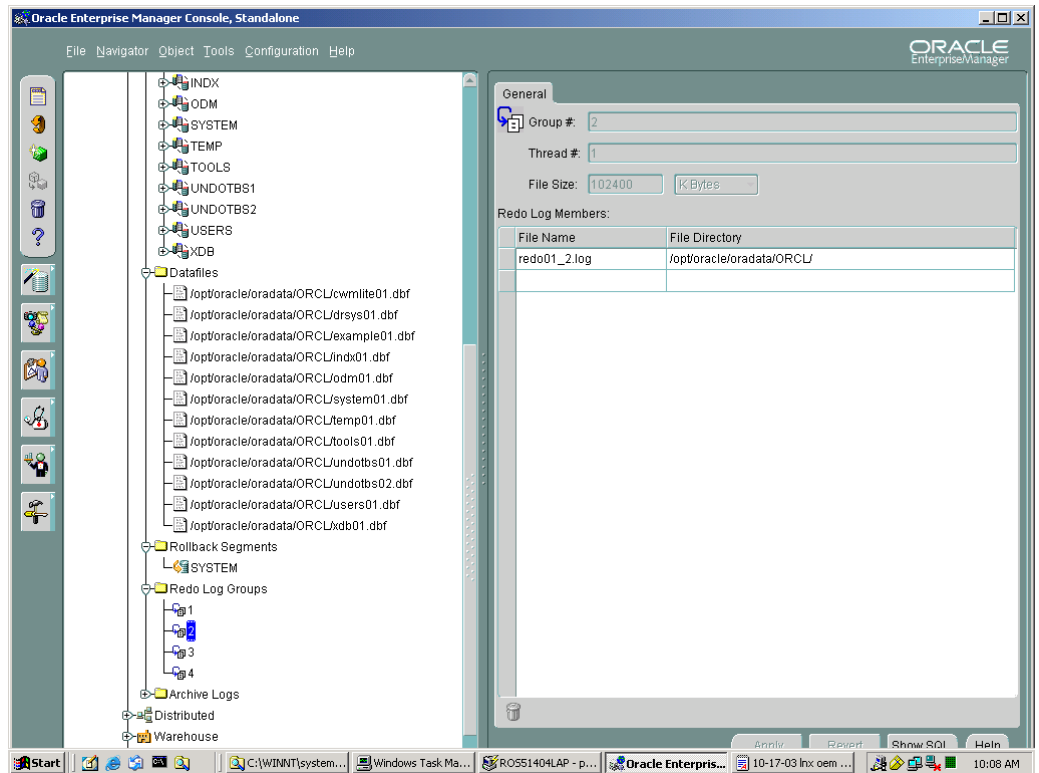
File Size: 102400 KBytes

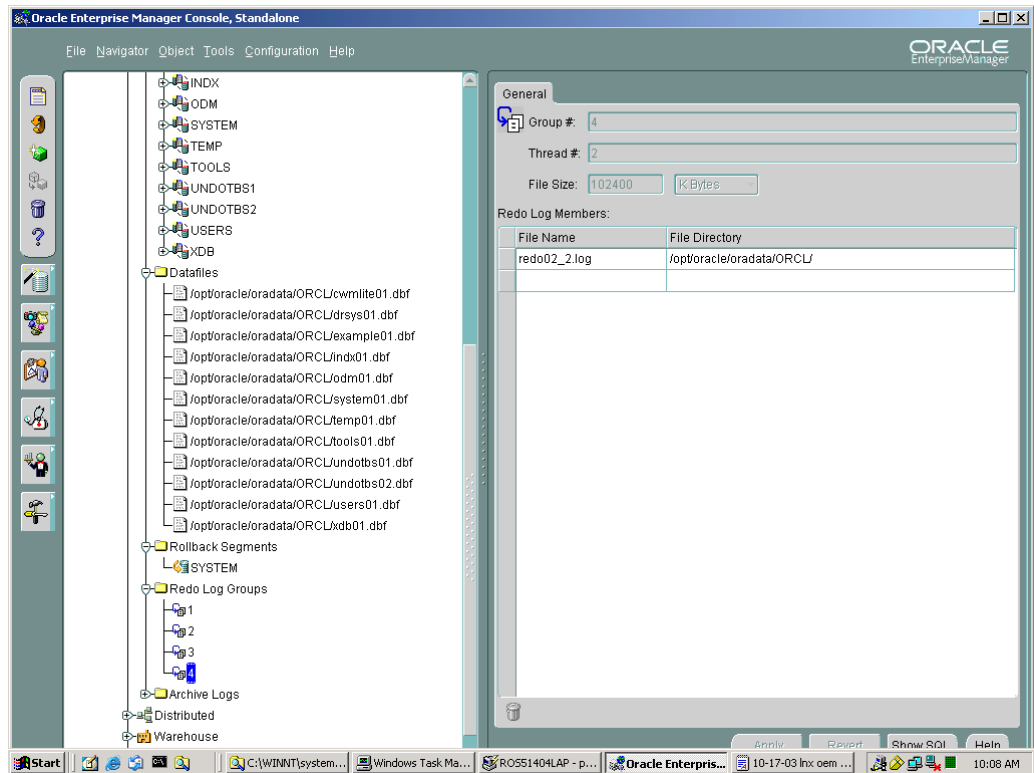
Redo Log Members:

File Name	File Directory
redo01_1.log	/opt/oracle/oradata/ORCL/

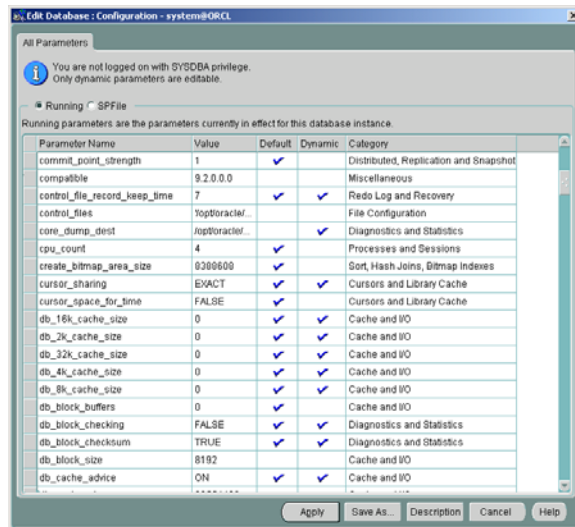
Anniv Report Show SQL Help

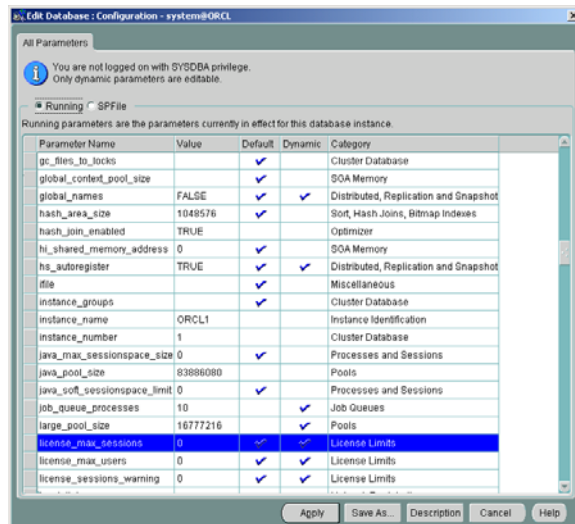
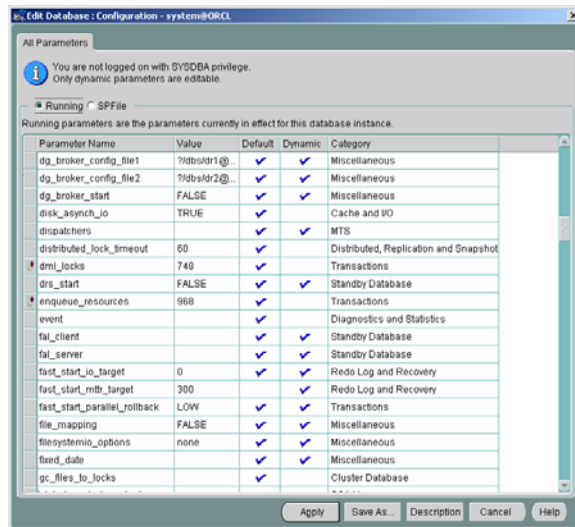
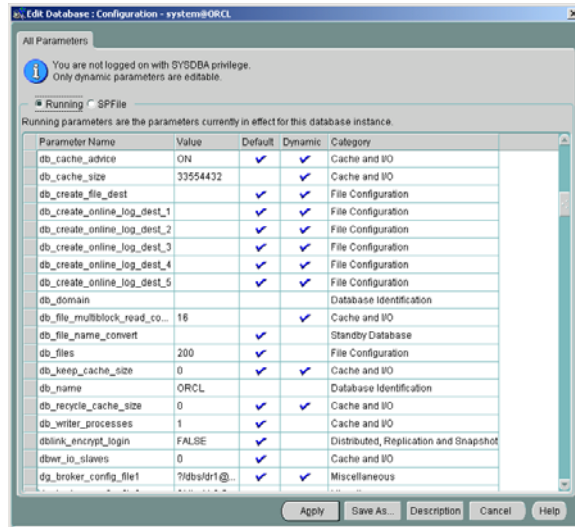
Start | C:\WINNT\system... | Windows Task Ma... | ROS51404LAP - D... | Oracle Enterpris... | 10-17-03 lnx oem... | 10:08 AM





Running Parameters:





Oracle Database: Configuration - system@ORCL

All Parameters

You are not logged on with SYSDBA privilege. Only dynamic parameters are editable.

Running SPFile

Running parameters are the parameters currently in effect for this database instance.

Parameter Name	Value	Default	Dynamic	Category
license_sessions_warning	0	✓	✓	License Limits
local_listener		✓	✓	Network Registration
lock_name_space		✓		Cluster Database
lock_sga	FALSE	✓		SGA Memory
log_archive_dest		✓	✓	Archive
log_archive_dest_1	LOCATION...	✓	✓	Archive
log_archive_dest_10		✓	✓	Archive
log_archive_dest_2		✓	✓	Archive
log_archive_dest_3		✓	✓	Archive
log_archive_dest_4		✓	✓	Archive
log_archive_dest_5		✓	✓	Archive
log_archive_dest_6		✓	✓	Archive
log_archive_dest_7		✓	✓	Archive
log_archive_dest_8		✓	✓	Archive
log_archive_dest_9		✓	✓	Archive
log_archive_dest_state_1	enable	✓	✓	Archive
log_archive_dest_state_10	enable	✓	✓	Archive
log_archive_dest_state_2	enable	✓	✓	Archive
log_archive_dest_state_3	enable	✓	✓	Archive

Apply Save As... Description Cancel Help

Oracle Database: Configuration - system@ORCL

All Parameters

You are not logged on with SYSDBA privilege. Only dynamic parameters are editable.

Running SPFile

Running parameters are the parameters currently in effect for this database instance.

Parameter Name	Value	Default	Dynamic	Category
log_archive_dest_state_3	enable	✓	✓	Archive
log_archive_dest_state_4	enable	✓	✓	Archive
log_archive_dest_state_5	enable	✓	✓	Archive
log_archive_dest_state_6	enable	✓	✓	Archive
log_archive_dest_state_7	enable	✓	✓	Archive
log_archive_dest_state_8	enable	✓	✓	Archive
log_archive_dest_state_9	enable	✓	✓	Archive
log_archive_duplex_dest		✓	✓	Archive
log_archive_format	%t_%s.dbf	✓		Archive
log_archive_max_processes	2	✓	✓	Archive
log_archive_min_succeed...	1	✓	✓	Archive
log_archive_start	FALSE	✓		Archive
log_archive_trace	0	✓	✓	Archive
log_buffer	524288	✓		Redo Log and Recovery
log_checkpoint_interval	0	✓	✓	Redo Log and Recovery
log_checkpoint_timeout	1800	✓	✓	Redo Log and Recovery
log_checkpoints_to_alert	FALSE	✓	✓	Redo Log and Recovery
log_file_name_convert		✓		Standby Database
log_parallelism	1	✓		Miscellaneous

Apply Save As... Description Cancel Help

Oracle Database: Configuration - system@ORCL

All Parameters

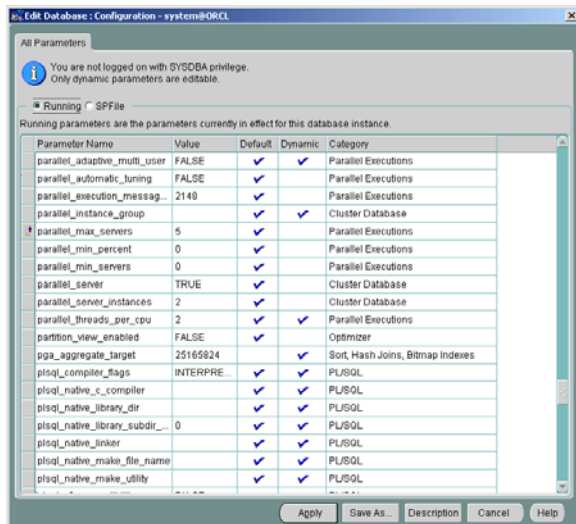
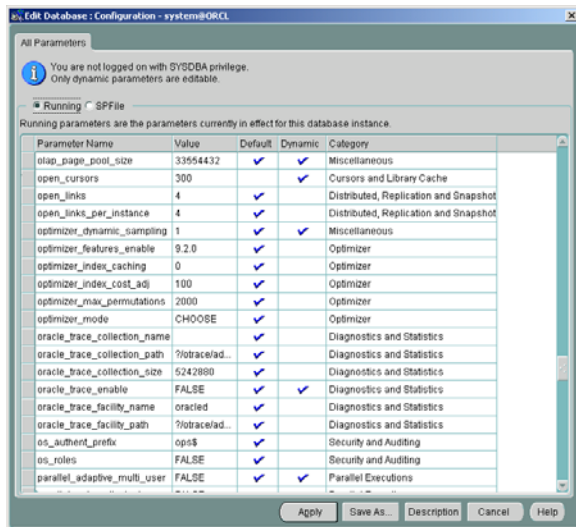
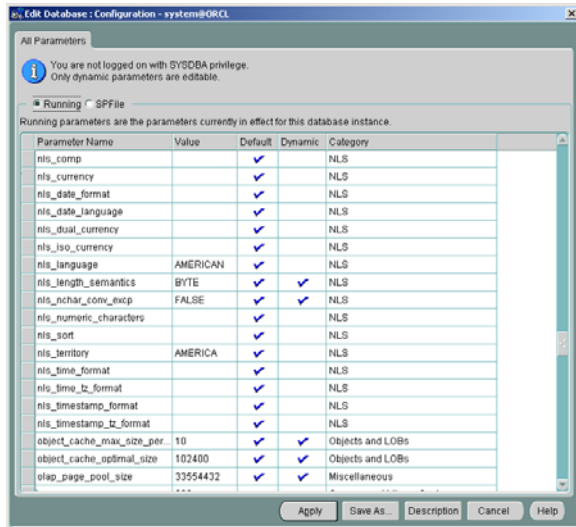
You are not logged on with SYSDBA privilege. Only dynamic parameters are editable.

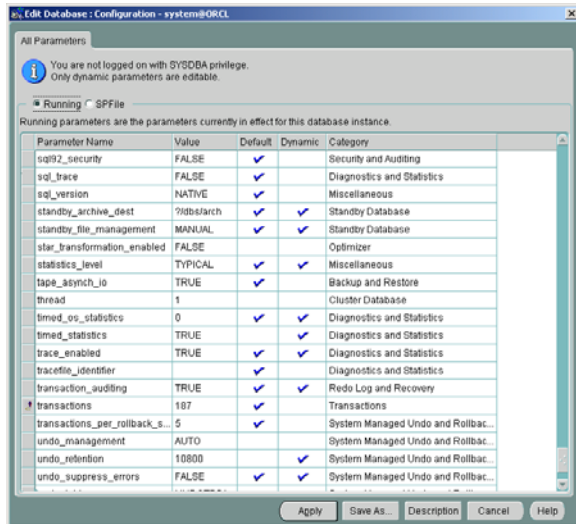
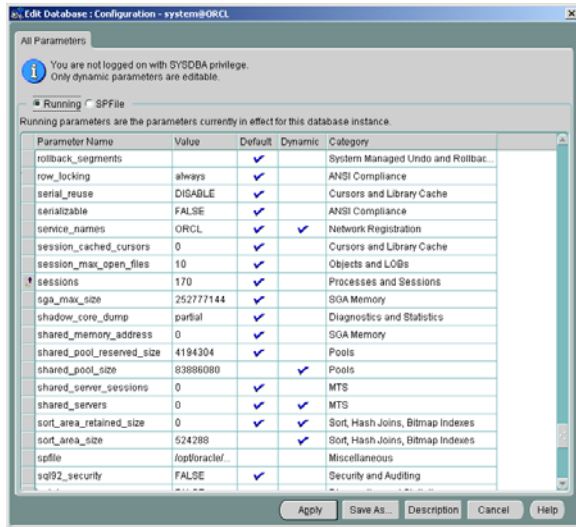
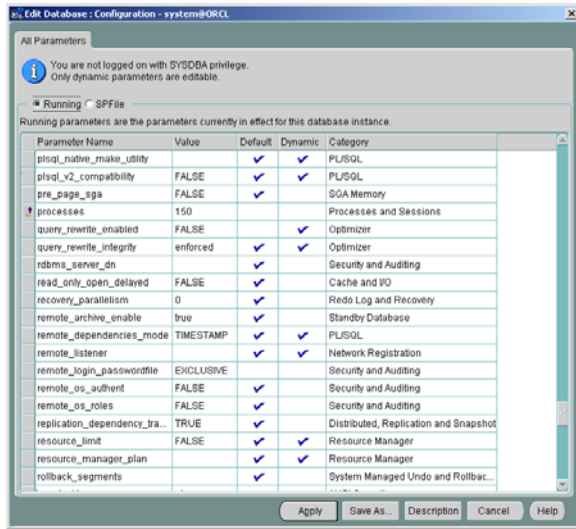
Running SPFile

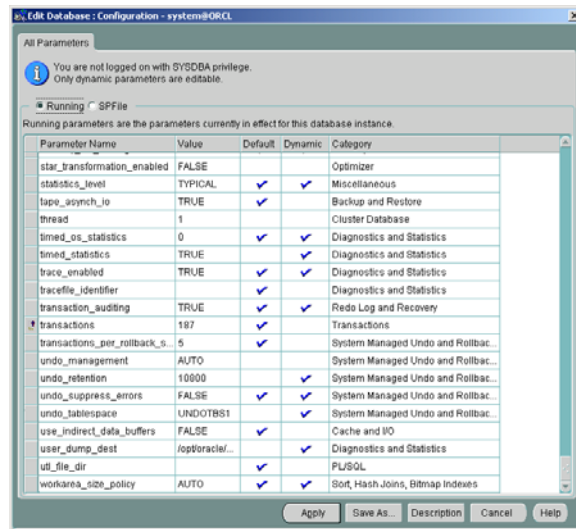
Running parameters are the parameters currently in effect for this database instance.

Parameter Name	Value	Default	Dynamic	Category
log_parallelism	1	✓		Miscellaneous
logminr_max_persistent_se...	1	✓		Miscellaneous
max_commit_propagation...	700	✓		Cluster Database
max_dispatchers	5	✓		MTS
max_dump_file_size	UNLIMITED	✓	✓	Diagnostics and Statistics
max_enabled_roles	30	✓		Security and Auditing
max_rollback_segments	27	✓		System Managed Undo and Rollbac...
max_shared_servers	20	✓		MTS
mts_circuits	0	✓		MTS
mts_dispatchers		✓	✓	MTS
mts_listener_address		✓		MTS
mts_max_dispatchers	5	✓		MTS
mts_max_servers	20	✓		MTS
mts_multiple_listeners	FALSE	✓		MTS
mts_servers	0	✓	✓	MTS
mts_service	ORCL	✓		MTS
mts_sessions	0	✓		MTS
nls_calendar		✓		NLS
nls_comp		✓		NLS

Apply Save As... Description Cancel Help







```

aq_tm_processes = 1
background_dump_dest = /opt/oracle/admin/ORCL/bdump
cluster_database = TRUE
cluster_database_instances = 2
compatible = 9.2.0.0
control_files = ('/opt/oracle/oradata/ORCL/control01.ctl',
'/opt/oracle/oradata/ORCL/control02.ctl', '/opt/oracle/oradata/ORCL/control03.ctl')
core_dump_dest = /opt/oracle/admin/ORCL/cdump
db_block_size = 8192
db_cache_size = 33554432
db_domain = ''
db_file_multiblock_read_count = 16
db_name = ORCL
fast_start_mtr_target = 300
hash_join_enabled = TRUE
instance_name = ORCL1
instance_number = 1
java_pool_size = 83886080
job_queue_processes = 10
large_pool_size = 16777216
log_archive_dest_1 = 'LOCATION=/opt/oracle/product/server32/9.2.0/dbs/arch'
open_cursors = 300
pga_aggregate_target = 25165824
processes = 150
query_rewrite_enabled = FALSE
remote_login_passwordfile = EXCLUSIVE
shared_pool_size = 83886080
sort_area_size = 524288
spfile = /opt/oracle/oradata/ORCL/spfile01.ora
star_transformation_enabled = FALSE
thread = 1
timed_statistics = TRUE
undo_management = AUTO
undo_retention = 10800
undo_tablespace = UNDOTBS1
user_dump_dest = /opt/oracle/admin/ORCL/udump

```

SPFILE parameters:

Oracle Database: Configuration - system@ORCL

All Parameters

i You are not logged on with SYSDBA privilege. Only dynamic parameters are editable.

Running **SPFile**

SPFile parameters are parameters which are stored in the server-side persistent file (spfile).

Instance Name	Parameter Name	Value	Dynamic	Category
	O7_DICTIONARY_ACCESS...			Security and Auditing
	active_instance_count			Cluster Database
	aq_tm_processes	1	<input checked="" type="checkbox"/>	Miscellaneous
	archive_lag_target		<input checked="" type="checkbox"/>	Standby Database
	audit_file_dest			Security and Auditing
	audit_sys_operations			Miscellaneous
	audit_trail			Security and Auditing
	background_core_dump			Diagnostics and Statistics
	background_dump_dest	logptoracl...	<input checked="" type="checkbox"/>	Diagnostics and Statistics
	backup_tape_io_slaves		<input checked="" type="checkbox"/>	Backup and Restore
	bitmap_merge_area_size			Sort, Hash Joins, Bitmap Indexes
	blank_btrimming			ANSI Compliance
	buffer_pool_keep			Cache and IO
	buffer_pool_recycle			Cache and IO
	circuits			MTS
	cluster_database	true		Cluster Database
	cluster_database_instances	2		Cluster Database
	cluster_interconnects			Cluster Database
	commit_point_strength			Distributed, Replication and Snapshot

Apply Save As Description Cancel Help

Oracle Database: Configuration - system@ORCL

All Parameters

i You are not logged on with SYSDBA privilege. Only dynamic parameters are editable.

Running **SPFile**

SPFile parameters are parameters which are stored in the server-side persistent file (spfile).

Instance Name	Parameter Name	Value	Dynamic	Category
	commit_point_strength			Distributed, Replication and Snapshot
	compatible	9.2.0.0.0		Miscellaneous
	control_file_record_keep_time		<input checked="" type="checkbox"/>	Redo Log and Recovery
	control_files	logptoracl...		File Configuration
	core_dump_dest	logptoracl...	<input checked="" type="checkbox"/>	Diagnostics and Statistics
	cpu_count			Processes and Sessions
	create_bitmap_area_size			Sort, Hash Joins, Bitmap Indexes
	cursor_sharing		<input checked="" type="checkbox"/>	Cursors and Library Cache
	cursor_space_for_time			Cursors and Library Cache
	db_16k_cache_size		<input checked="" type="checkbox"/>	Cache and IO
	db_2k_cache_size		<input checked="" type="checkbox"/>	Cache and IO
	db_32k_cache_size		<input checked="" type="checkbox"/>	Cache and IO
	db_4k_cache_size		<input checked="" type="checkbox"/>	Cache and IO
	db_8k_cache_size		<input checked="" type="checkbox"/>	Cache and IO
	db_block_buffers			Cache and IO
	db_block_checking		<input checked="" type="checkbox"/>	Diagnostics and Statistics
	db_block_checksum		<input checked="" type="checkbox"/>	Diagnostics and Statistics
	db_block_size	8192		Cache and IO
	db_cache_advice		<input checked="" type="checkbox"/>	Cache and IO

Apply Save As Description Cancel Help

Oracle Database: Configuration - system@ORCL

All Parameters

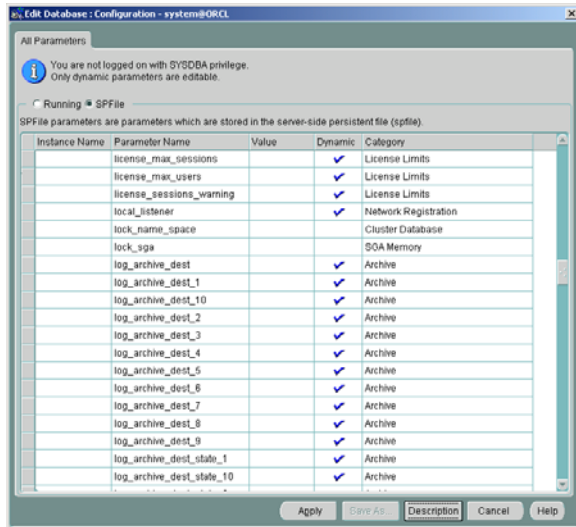
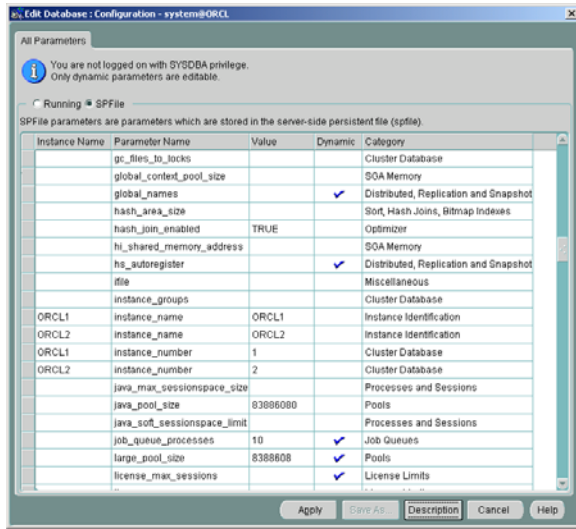
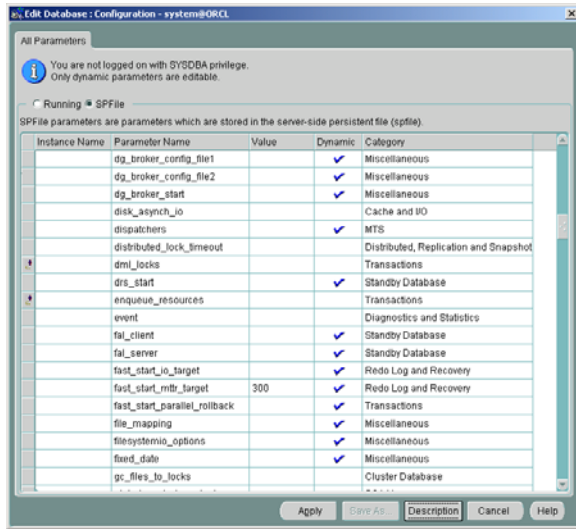
i You are not logged on with SYSDBA privilege. Only dynamic parameters are editable.

Running **SPFile**

SPFile parameters are parameters which are stored in the server-side persistent file (spfile).

Instance Name	Parameter Name	Value	Dynamic	Category
	db_cache_advice		<input checked="" type="checkbox"/>	Cache and IO
	db_cache_size	25165024	<input checked="" type="checkbox"/>	Cache and IO
	db_create_file_dest		<input checked="" type="checkbox"/>	File Configuration
	db_create_online_log_dest_1		<input checked="" type="checkbox"/>	File Configuration
	db_create_online_log_dest_2		<input checked="" type="checkbox"/>	File Configuration
	db_create_online_log_dest_3		<input checked="" type="checkbox"/>	File Configuration
	db_create_online_log_dest_4		<input checked="" type="checkbox"/>	File Configuration
	db_create_online_log_dest_5		<input checked="" type="checkbox"/>	File Configuration
	db_domain			Database Identification
	db_file_multiblock_read_co...	16	<input checked="" type="checkbox"/>	Cache and IO
	db_file_name_convert			Standby Database
	db_files			File Configuration
	db_keep_cache_size		<input checked="" type="checkbox"/>	Cache and IO
	db_name	ORCL		Database Identification
	db_recycle_cache_size		<input checked="" type="checkbox"/>	Cache and IO
	db_writer_processes			Cache and IO
	dblink_encrypt_login			Distributed, Replication and Snapshot
	dbwr_io_slaves			Cache and IO
	dg_broker_config_file1		<input checked="" type="checkbox"/>	Miscellaneous

Apply Save As Description Cancel Help



Oracle Database: Configuration - system@ORCL

All Parameters

You are not logged on with SYSDBA privilege. Only dynamic parameters are editable.

Running - SPFile

SPFile parameters are parameters which are stored in the server-side persistent file (spfile).

Instance Name	Parameter Name	Value	Dynamic	Category
	log_archive_dest_state_10		✓	Archive
	log_archive_dest_state_2		✓	Archive
	log_archive_dest_state_3		✓	Archive
	log_archive_dest_state_4		✓	Archive
	log_archive_dest_state_5		✓	Archive
	log_archive_dest_state_6		✓	Archive
	log_archive_dest_state_7		✓	Archive
	log_archive_dest_state_8		✓	Archive
	log_archive_dest_state_9		✓	Archive
	log_archive_duplex_dest		✓	Archive
	log_archive_format			Archive
	log_archive_max_processes		✓	Archive
	log_archive_min_succeed_		✓	Archive
	log_archive_start			Archive
	log_archive_trace		✓	Archive
	log_buffer			Redo Log and Recovery
	log_checkpoint_interval		✓	Redo Log and Recovery
	log_checkpoint_timeout		✓	Redo Log and Recovery
	log_checkpoints_to_alert		✓	Redo Log and Recovery

Apply Save As Description Cancel Help

Oracle Database: Configuration - system@ORCL

All Parameters

You are not logged on with SYSDBA privilege. Only dynamic parameters are editable.

Running - SPFile

SPFile parameters are parameters which are stored in the server-side persistent file (spfile).

Instance Name	Parameter Name	Value	Dynamic	Category
	log_checkpoints_to_alert		✓	Redo Log and Recovery
	log_file_name_convert			Standby Database
	log_parallelism			Miscellaneous
	logmnr_max_persistent_co			Miscellaneous
	max_commit_propagation_			Cluster Database
	max_dispatchers			MTS
	max_dump_file_size		✓	Diagnostics and Statistics
	max_enabled_roles			Security and Auditing
	max_rollback_segments			System Managed Undo and Rollbac...
	max_shared_servers			MTS
	mts_circuits			MTS
	mts_dispatchers		✓	MTS
	mts_listener_address			MTS
	mts_max_dispatchers			MTS
	mts_max_servers			MTS
	mts_multiple_listeners			MTS
	mts_servers		✓	MTS
	mts_service			MTS
	mts_sessions			MTS

Apply Save As Description Cancel Help

Oracle Database: Configuration - system@ORCL

All Parameters

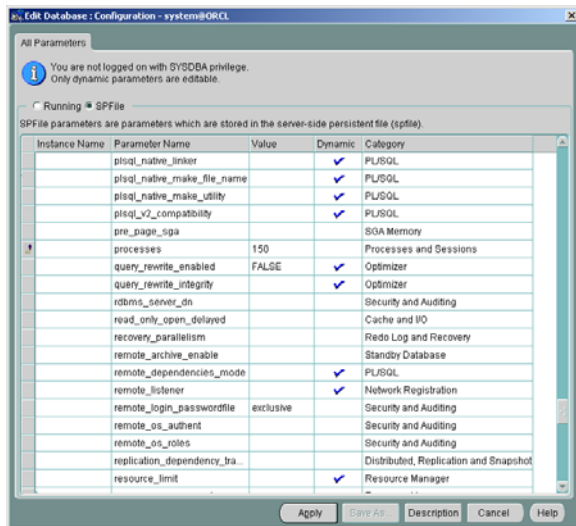
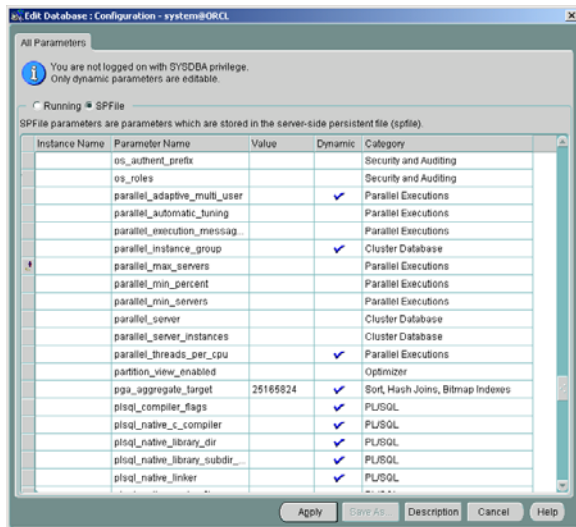
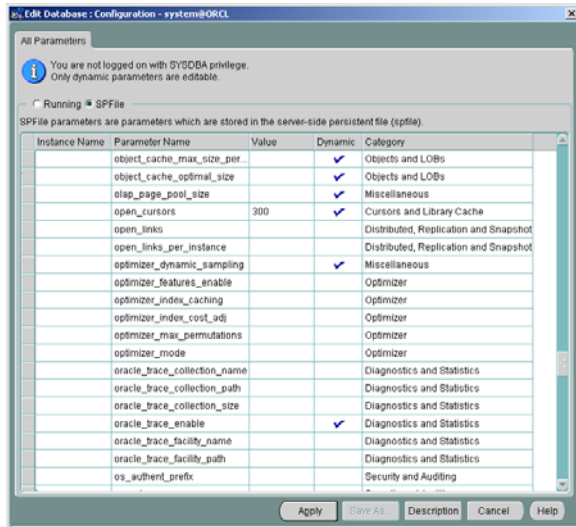
You are not logged on with SYSDBA privilege. Only dynamic parameters are editable.

Running - SPFile

SPFile parameters are parameters which are stored in the server-side persistent file (spfile).

Instance Name	Parameter Name	Value	Dynamic	Category
	mts_sessions			MTS
	nls_calendar			NLS
	nls_comp			NLS
	nls_currency			NLS
	nls_date_format			NLS
	nls_date_language			NLS
	nls_dual_currency			NLS
	nls_iso_currency			NLS
	nls_language			NLS
	nls_length_semantics		✓	NLS
	nls_nchar_conv_excp		✓	NLS
	nls_numeric_characters			NLS
	nls_sort			NLS
	nls_territory			NLS
	nls_time_format			NLS
	nls_time_tz_format			NLS
	nls_timestamp_format			NLS
	nls_timestamp_tz_format			NLS
	object_cache_max_size_per...		✓	Objects and LOBs

Apply Save As Description Cancel Help



Oracle Database: Configuration - system@ORCL

All Parameters

You are not logged on with SYSDBA privilege. Only dynamic parameters are editable.

Running - SPFile

SPFile parameters are parameters which are stored in the server-side persistent file (spfile).

Instance Name	Parameter Name	Value	Dynamic	Category
	resource_limit		<input checked="" type="checkbox"/>	Resource Manager
	resource_manager_plan		<input checked="" type="checkbox"/>	Resource Manager
	rollback_segments			System Managed Undo and Rollbac...
	row_locking			ANSI Compliance
	serial_reuse			Cursors and Library Cache
	serializable			ANSI Compliance
	service_names		<input checked="" type="checkbox"/>	Network Registration
	session_cached_cursors			Cursors and Library Cache
	session_max_open_files			Objects and LOBs
	sessions			Processes and Sessions
	sga_max_size			SGA Memory
	shadow_core_dump			Diagnostics and Statistics
	shared_memory_address			SGA Memory
	shared_pool_reserved_size			Pools
	shared_pool_size	83886080	<input checked="" type="checkbox"/>	Pools
	shared_server_sessions			MTS
	shared_servers		<input checked="" type="checkbox"/>	MTS
	sort_area_retained_size		<input checked="" type="checkbox"/>	Sort, Hash Joins, Bitmap Indexes
	sort_area_size	524288	<input checked="" type="checkbox"/>	Sort, Hash Joins, Bitmap Indexes

Apply Save As Description Cancel Help

Oracle Database: Configuration - system@ORCL

All Parameters

You are not logged on with SYSDBA privilege. Only dynamic parameters are editable.

Running - SPFile

SPFile parameters are parameters which are stored in the server-side persistent file (spfile).

Instance Name	Parameter Name	Value	Dynamic	Category
	sort_area_size	524288	<input checked="" type="checkbox"/>	Sort, Hash Joins, Bitmap Indexes
	spfile			Miscellaneous
	sql92_security			Security and Auditing
	sql_trace			Diagnostics and Statistics
	sql_version			Miscellaneous
	standby_archive_dest		<input checked="" type="checkbox"/>	Standby Database
	standby_file_management		<input checked="" type="checkbox"/>	Standby Database
	star_transformation_enabled	FALSE		Optimizer
	statistics_level		<input checked="" type="checkbox"/>	Miscellaneous
	tape_async_io			Backup and Restore
ORCL1	thread	1		Cluster Database
ORCL2	thread	2		Cluster Database
	timed_os_statistics		<input checked="" type="checkbox"/>	Diagnostics and Statistics
	timed_statistics	TRUE	<input checked="" type="checkbox"/>	Diagnostics and Statistics
	trace_enabled		<input checked="" type="checkbox"/>	Diagnostics and Statistics
	tracefile_identifier			Diagnostics and Statistics
	transaction_auditing		<input checked="" type="checkbox"/>	Redo Log and Recovery
	transactions			Transactions
	transactions_per_rollback_s...			System Managed Undo and Rollbac...

Apply Save As Description Cancel Help

Oracle Database: Configuration - system@ORCL

All Parameters

You are not logged on with SYSDBA privilege. Only dynamic parameters are editable.

Running - SPFile

SPFile parameters are parameters which are stored in the server-side persistent file (spfile).

Instance Name	Parameter Name	Value	Dynamic	Category
	tape_async_io			Backup and Restore
ORCL1	thread	1		Cluster Database
ORCL2	thread	2		Cluster Database
	timed_os_statistics		<input checked="" type="checkbox"/>	Diagnostics and Statistics
	timed_statistics	TRUE	<input checked="" type="checkbox"/>	Diagnostics and Statistics
	trace_enabled		<input checked="" type="checkbox"/>	Diagnostics and Statistics
	tracefile_identifier			Diagnostics and Statistics
	transaction_auditing		<input checked="" type="checkbox"/>	Redo Log and Recovery
	transactions			Transactions
	transactions_per_rollback_s...			System Managed Undo and Rollbac...
	undo_management	AUTO		System Managed Undo and Rollbac...
	undo_retention	10800	<input checked="" type="checkbox"/>	System Managed Undo and Rollbac...
	undo_suppress_errors		<input checked="" type="checkbox"/>	System Managed Undo and Rollbac...
ORCL1	undo_tablespace	UNDOTBS1	<input checked="" type="checkbox"/>	System Managed Undo and Rollbac...
ORCL2	undo_tablespace	UNDOTBS2	<input checked="" type="checkbox"/>	System Managed Undo and Rollbac...
	use_indirect_data_buffers			Cache and IO
	user_dump_dest	/opt/oracle/...	<input checked="" type="checkbox"/>	Diagnostics and Statistics
	utl_file_dir			PL/SQL
	workarea_size_policy		<input checked="" type="checkbox"/>	Sort, Hash Joins, Bitmap Indexes

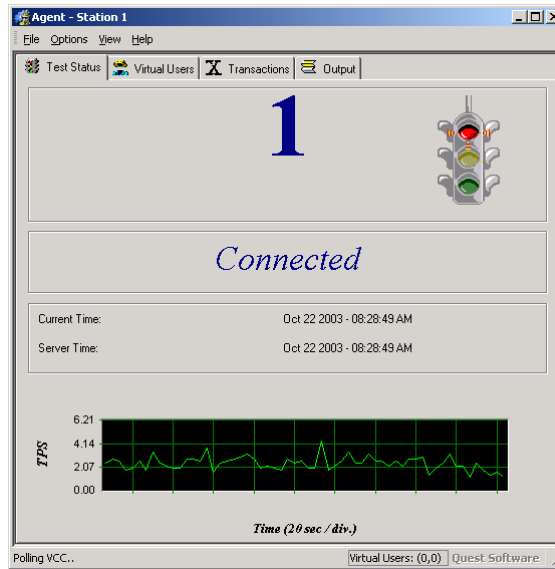
Apply Save As Description Cancel Help

```
[root@racnode1 ORCL]# cat spfile01.ora
*.aq_tm_processes=1
*.background_dump_dest='/opt/oracle/admin/ORCL/bdump'
*.cluster_database=true
*.cluster_database_instances=2
*.compatible='9.2.0.0.0'
```

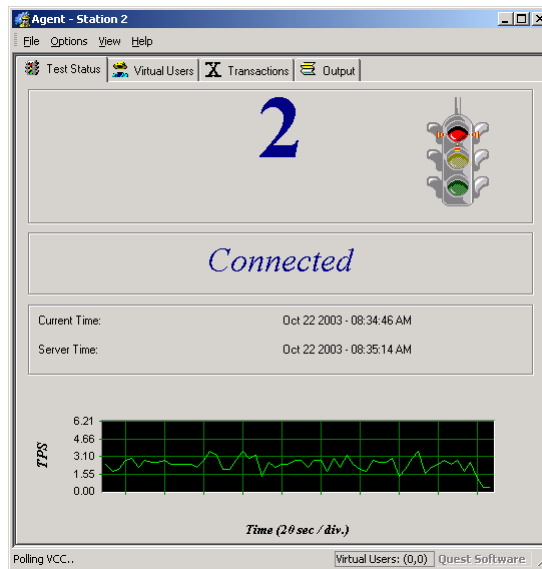
```
*.control_files='/opt/oracle/oradata/ORCL/control01.ctl','/opt/oracle/oradata/ORCL/control02.ctl','/opt/oracle/oradata/ORCL/control03.ctl'
*.core_dump_dest='/opt/oracle/admin/ORCL/cdump'
*.db_block_size=8192
*.db_cache_size=25165824
*.db_domain=""
*.db_file_multiblock_read_count=16
*.db_name='ORCL'
*.fast_start_mttr_target=300
*.hash_join_enabled=TRUE
ORCL1.instance_name='ORCL1'
ORCL2.instance_name='ORCL2'
ORCL1.instance_number=1
ORCL2.instance_number=2
*.java_pool_size=83886080
*.job_queue_processes=10
*.large_pool_size=8388608
*.open_cursors=300
*.pga_aggregate_target=25165824
*.processes=150
*.query_rewrite_enabled='FALSE'
*.remote_login_passwordfile='exclusive'
*.shared_pool_size=83886080
*.sort_area_size=524288
*.star_transformation_enabled='FALSE'
ORCL1.thread=1
ORCL2.thread=2
*.timed_statistics=TRUE
*.undo_management='AUTO'
*.undo_retention=10800
ORCL1.undo_tablespace='UNDOTBS1'
ORCL2.undo_tablespace='UNDOTBS2'
*.user_dump_dest='/opt/oracle/admin/ORCL/udump'
```

appendix f: Oracle Validation

Station 1 Agent:



Station 2 Agent:



Visual Control Center - TPC-C.vsb - [TPC-C.vsb]

File Edit View Insert Project Queue Agents Tools Window Help

New Open Save Cut Copy Paste Undo Redo Wizard Quest

Active Profile: LNX_9IRAC

TPC-C

- Test Scripts
 - Available Static Transactions for TPC-C
 - Table Creation
 - Stored Procedure Creation
 - Table Load
 - Index Creation
 - TPC C Transactions
 - Index Deletion
 - Object Deletion
 - User Scenarios
 - Load Scenarios
 - TPC-C Transaction Mix
 - New Order Transaction
 - Payment Transaction
 - Order-Status Transaction
 - Delivery Transaction
 - Stock-Level Transaction

Run Queue

Sequence	Name	Status
0	TPC-C - drop procedure	COMPLETE
1	TPC-C - drop index	COMPLETE
2	TPC-C - drop table	COMPLETE
3	TPC-C - create table	COMPLETE
4	TPC-C - create proced...	COMPLETE
5	TPC-C - load table	COMPLETE
6	TPC-C - create index	COMPLETE
7	TPC-C Transaction Mix	COMPLETE

Run Queue Agent Status Summary Real-Time

Total Time to perform the benchmark:
Elapsed : 1 Days 00:11:27.627

Output Messages Results

For Help, press F1 Benchmark completed. 8:29 AM Quest Software

Visual Control Center - TPC-C.vsb - [TPC-C.vsb]

File Edit View Insert Project Queue Agents Tools Window Help

New Open Save Cut Copy Paste Undo Redo Wizard Quest

Active Profile: LNX_9IRAC

TPC-C

- Test Scripts
 - Available Static Transactions for TPC-C
 - Table Creation
 - Stored Procedure Creation
 - Table Load
 - Index Creation
 - TPC C Transactions
 - Index Deletion
 - Object Deletion
 - User Scenarios
 - Load Scenarios
 - TPC-C Transaction Mix
 - New Order Transaction
 - Payment Transaction
 - Order-Status Transaction
 - Delivery Transaction
 - Stock-Level Transaction

Run Queue

Sequence	Name	Status
0	TPC-C - drop procedure	COMPLETE
1	TPC-C - drop index	COMPLETE
2	TPC-C - drop table	COMPLETE
3	TPC-C - create table	COMPLETE
4	TPC-C - create proced...	COMPLETE
5	TPC-C - load table	COMPLETE
6	TPC-C - create index	COMPLETE
7	TPC-C Transaction Mix	COMPLETE

Run Queue Agent Status Summary Real-Time

Total Time to perform the benchmark:
Elapsed : 1 Days 00:11:27.627

Output Messages Results

For Help, press F1 Benchmark completed. 8:29 AM Quest Software

Visual Control Center - TPC-C.vsb - [TPC-C.vsb]

File Edit View Insert Project Queue Agents Tools Window Help

New Open Save Cut Copy Paste Undo Redo Wizard Quest Start Stop

Active Profile: LNX_9IRAC

TPC-C

- Test Scripts
 - Available Static Transactions for TPC-C
 - Table Creation
 - Stored Procedure Creation
 - Table Load
 - Index Creation
 - TPC C Transactions
 - Index Deletion
 - Object Deletion
 - User Scenarios
 - Load Scenarios
 - TPC-C Transaction Mix
 - New Order Transaction
 - Payment Transaction
 - Order-Status Transaction
 - Delivery Transaction
 - Stock-Level Transaction

Run Queue

Station	Computer	Status	User Load	Virtual Us...	TPS
2	solo-sw	Connected	N/A	0	0.00
1	luke-sw	Connected	N/A	0	0.00
Totals			N/A	0	0.00

of Agents (Assigned/Unassigned): 2 / 0

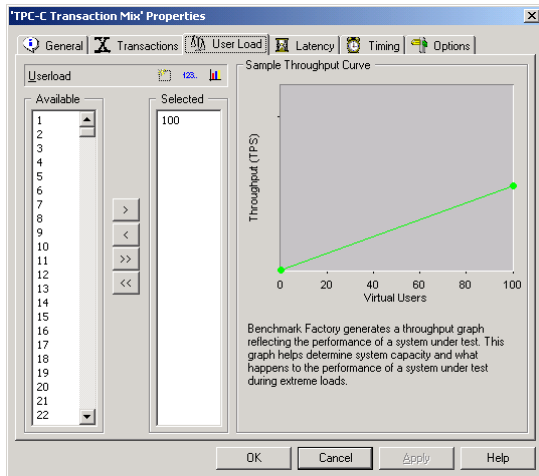
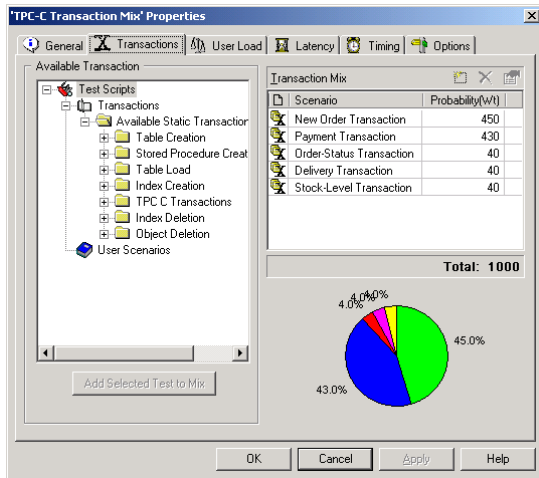
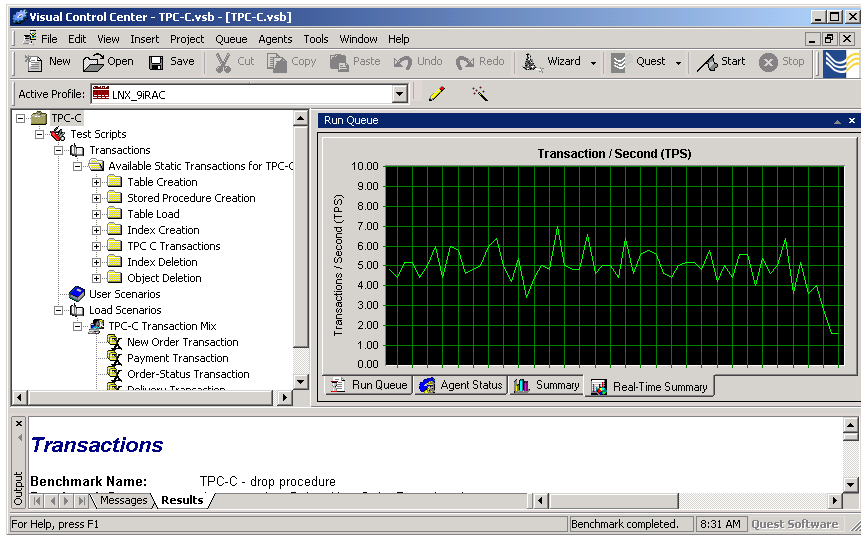
Run Queue Agent Status Summary Real-Time Summary

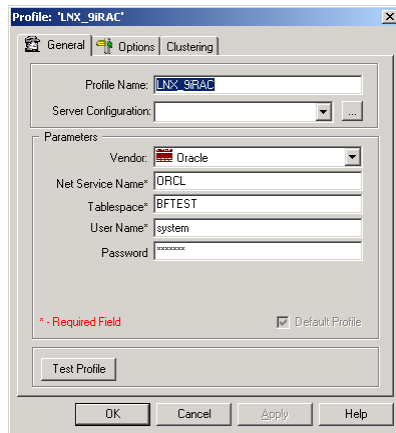
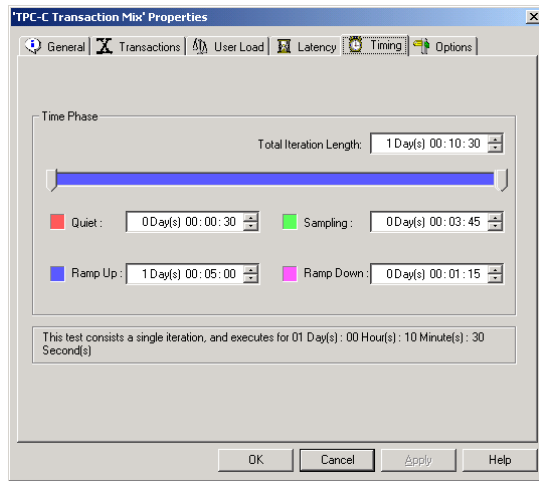
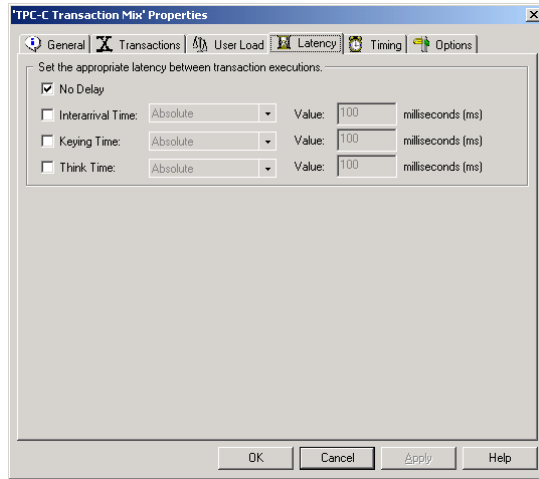
Transactions

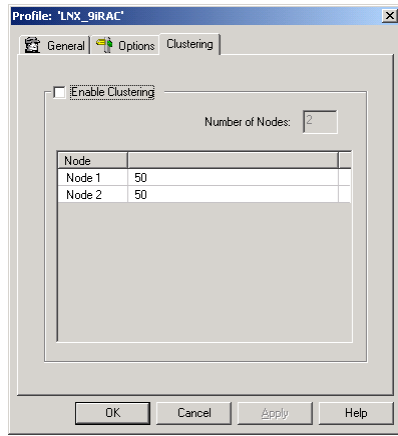
Benchmark Name: TPC-C - drop procedure

Output Messages Results

For Help, press F1 Benchmark completed. 8:30 AM Quest Software







Benchmark Factory Output Log

Benchmark Factory(TM)

Copyright (c) Quest Software 1990-2002. All rights reserved.

Performing Static Database Test - 'Delete New Order Procedure 1'...

** Static Database Test 'Delete New Order Procedure 1' has executed 1 Times, returning 0 row(s).

Performing Static Database Test - 'Delete Payment Procedure 1'...

** Static Database Test 'Delete Payment Procedure 1' has executed 1 Times, returning 0 row(s).

Performing Static Database Test - 'Delete Payment Procedure 2'...

** Static Database Test 'Delete Payment Procedure 2' has executed 1 Times, returning 0 row(s).

Performing Static Database Test - 'Delete Order Status Procedure 1'...

** Static Database Test 'Delete Order Status Procedure 1' has executed 1 Times, returning 0 row(s).

Performing Static Database Test - 'Delete Order Status Procedure 2'...

** Static Database Test 'Delete Order Status Procedure 2' has executed 1 Times, returning 0 row(s).

Performing Static Database Test - 'Delete Delivery Procedure'...

** Static Database Test 'Delete Delivery Procedure' has executed 1 Times, returning 0 row(s).

Performing Static Database Test - 'Delete Stock Level Procedure'...

** Static Database Test 'Delete Stock Level Procedure' has executed 1 Times, returning 0 row(s).

** Benchmark complete.

Total Time to perform the benchmark:

Elapsed : 0 Days 00:00:02.072

Benchmark Factory(TM)

Copyright (c) Quest Software 1990-2002. All rights reserved.

Performing Static Database Test - 'Drop C_Warehouse Index 1'...

** Static Database Test 'Drop C_Warehouse Index 1' has executed 1 Times, returning 0 row(s).

Performing Static Database Test - 'Drop C_District Index 1'...

** Static Database Test 'Drop C_District Index 1' has executed 1 Times, returning 0 row(s).

Performing Static Database Test - 'Drop C_Customer Index 1'...

** Static Database Test 'Drop C_Customer Index 1' has executed 1 Times, returning 0 row(s).

Performing Static Database Test - 'Drop C_Customer Index 2'...

** Static Database Test 'Drop C_Customer Index 2' has executed 1 Times, returning 0 row(s).

Performing Static Database Test - 'Drop C_New_Order Index 1'...

** Static Database Test 'Drop C_New_Order Index 1' has executed 1 Times, returning 0 row(s).

Performing Static Database Test - 'Drop C_Order Index 1'...

** Static Database Test 'Drop C_Order Index 1' has executed 1 Times, returning 0 row(s).

Performing Static Database Test - 'Drop C_Order_Line Index 1'...

** Static Database Test 'Drop C_Order_Line Index 1' has executed 1 Times, returning 0 row(s).

Performing Static Database Test - 'Drop C_Item Index 1'...

** Static Database Test 'Drop C_Item Index 1' has executed 1 Times, returning 0 row(s).

Performing Static Database Test - 'Drop C_Stock Index 1'...

** Static Database Test 'Drop C_Stock Index 1' has executed 1 Times, returning 0 row(s).

** Benchmark complete.

Total Time to perform the benchmark:

Elapsed : 0 Days 00:00:05.766

Benchmark Factory(TM)

Copyright (c) Quest Software 1990-2002. All rights reserved.

Performing Static Database Test - 'Delete C_Warehouse Table'...
** Static Database Test 'Delete C_Warehouse Table' has executed 1 Times, returning 0 row(s).

Performing Static Database Test - 'Delete C_District Table'...
** Static Database Test 'Delete C_District Table' has executed 1 Times, returning 0 row(s).

Performing Static Database Test - 'Delete C_Customer Table'...
** Static Database Test 'Delete C_Customer Table' has executed 1 Times, returning 0 row(s).

Performing Static Database Test - 'Delete C_History Table'...
** Static Database Test 'Delete C_History Table' has executed 1 Times, returning 0 row(s).

Performing Static Database Test - 'Delete C_New_Order Table'...
** Static Database Test 'Delete C_New_Order Table' has executed 1 Times, returning 0 row(s).

Performing Static Database Test - 'Delete C_Order Table'...
** Static Database Test 'Delete C_Order Table' has executed 1 Times, returning 0 row(s).

Performing Static Database Test - 'Delete C_Order_Line Table'...
** Static Database Test 'Delete C_Order_Line Table' has executed 1 Times, returning 0 row(s).

Performing Static Database Test - 'Delete C_Item Table'...
** Static Database Test 'Delete C_Item Table' has executed 1 Times, returning 0 row(s).

Performing Static Database Test - 'Delete C_Stock Table'...
** Static Database Test 'Delete C_Stock Table' has executed 1 Times, returning 0 row(s).

** Benchmark complete.

Total Time to perform the benchmark:

Elapsed : 0 Days 00:00:07.057

Benchmark Factory(TM)
Copyright (c) Quest Software 1990-2002. All rights reserved.

Performing Static Database Test - 'Create C_Warehouse Table'...
** Static Database Test 'Create C_Warehouse Table' has executed 1 Times, returning 0 row(s).

Performing Static Database Test - 'Create C_District Table'...
** Static Database Test 'Create C_District Table' has executed 1 Times, returning 0 row(s).

Performing Static Database Test - 'Create C_Customer Table'...
** Static Database Test 'Create C_Customer Table' has executed 1 Times, returning 0 row(s).

Performing Static Database Test - 'Create C_History Table'...
** Static Database Test 'Create C_History Table' has executed 1 Times, returning 0 row(s).

Performing Static Database Test - 'Create C_New_Order Table'...
** Static Database Test 'Create C_New_Order Table' has executed 1 Times, returning 0 row(s).

Performing Static Database Test - 'Create C_Order Table'...
** Static Database Test 'Create C_Order Table' has executed 1 Times, returning 0 row(s).

Performing Static Database Test - 'Create C_Order_Line Table'...
** Static Database Test 'Create C_Order_Line Table' has executed 1 Times, returning 0 row(s).

Performing Static Database Test - 'Create C_Item Table'...
** Static Database Test 'Create C_Item Table' has executed 1 Times, returning 0 row(s).

Performing Static Database Test - 'Create C_Stock Table'...
** Static Database Test 'Create C_Stock Table' has executed 1 Times, returning 0 row(s).

** Benchmark complete.

Total Time to perform the benchmark:

Elapsed : 0 Days 00:00:02.873

Benchmark Factory(TM)
Copyright (c) Quest Software 1990-2002. All rights reserved.

Performing Static Database Test - 'Create New Order Procedure 1'...
** Static Database Test 'Create New Order Procedure 1' has executed 1 Times, returning 0 row(s).

Performing Static Database Test - 'Create Payment Procedure 1'...
** Static Database Test 'Create Payment Procedure 1' has executed 1 Times, returning 0 row(s).

Performing Static Database Test - 'Create Payment Procedure 2'...
** Static Database Test 'Create Payment Procedure 2' has executed 1 Times, returning 0 row(s).

Performing Static Database Test - 'Create Order Status Procedure 1'...
** Static Database Test 'Create Order Status Procedure 1' has executed 1 Times, returning 0 row(s).

Performing Static Database Test - 'Create Order Status Procedure 2'...
** Static Database Test 'Create Order Status Procedure 2' has executed 1 Times, returning 0 row(s).

Performing Static Database Test - 'Create Delivery Procedure'...
** Static Database Test 'Create Delivery Procedure' has executed 1 Times, returning 0 row(s).

Performing Static Database Test - 'Create Stock Level Procedure'...
** Static Database Test 'Create Stock Level Procedure' has executed 1 Times, returning 0 row(s).

** Benchmark complete.

Total Time to perform the benchmark:

Elapsed : 0 Days 00:00:02.042

Benchmark Factory(TM)
Copyright (c) Quest Software 1990-2002. All rights reserved.

Performing Static Database Test - 'Load C_Warehouse Table '...
** Static Database Test 'Load C_Warehouse Table ' has executed 1 Times, returning 4 row(s).

Performing Static Database Test - 'Load C_District Table '...
** Static Database Test 'Load C_District Table ' has executed 1 Times, returning 40 row(s).

Performing Static Database Test - 'Load C_Customer Table '...
** Static Database Test 'Load C_Customer Table ' has executed 1 Times, returning 120000 row(s).

Performing Static Database Test - 'Load C_History Table '...
** Static Database Test 'Load C_History Table ' has executed 1 Times, returning 120000 row(s).

Performing Static Database Test - 'Load C_New_Order Table '...
** Static Database Test 'Load C_New_Order Table ' has executed 1 Times, returning 36000 row(s).

Performing Static Database Test - 'Load C_Order Table '...
** Static Database Test 'Load C_Order Table ' has executed 1 Times, returning 120000 row(s).

Performing Static Database Test - 'Load C_Order_Line Table '...
** Static Database Test 'Load C_Order_Line Table ' has executed 1 Times, returning 1201509 row(s).

Performing Static Database Test - 'Load C_Item Table '...
** Static Database Test 'Load C_Item Table ' has executed 1 Times, returning 100000 row(s).

Performing Static Database Test - 'Load C_Stock Table '...
** Static Database Test 'Load C_Stock Table ' has executed 1 Times, returning 400000 row(s).

** Benchmark complete.

Total Time to perform the benchmark:

Elapsed : 0 Days 00:04:16.626

Benchmark Factory(TM)
Copyright (c) Quest Software 1990-2002. All rights reserved.

Performing Static Database Test - 'Create C_Warehouse Index 1'...
** Static Database Test 'Create C_Warehouse Index 1' has executed 1 Times, returning 0 row(s).

Performing Static Database Test - 'Create C_District Index 1'...
** Static Database Test 'Create C_District Index 1' has executed 1 Times, returning 0 row(s).

Performing Static Database Test - 'Create C_Customer Index 1'...
** Static Database Test 'Create C_Customer Index 1' has executed 1 Times, returning 0 row(s).

Performing Static Database Test - 'Create C_Customer Index 2'...
** Static Database Test 'Create C_Customer Index 2' has executed 1 Times, returning 0 row(s).

Performing Static Database Test - 'Create C_New_Order Index 1'...
** Static Database Test 'Create C_New_Order Index 1' has executed 1 Times, returning 0 row(s).

Performing Static Database Test - 'Create C_Order Index 1'...
** Static Database Test 'Create C_Order Index 1' has executed 1 Times, returning 0 row(s).

Performing Static Database Test - 'Create C_Order_Line Index 1'...
** Static Database Test 'Create C_Order_Line Index 1' has executed 1 Times, returning 0 row(s).

Performing Static Database Test - 'Create C_Item Index 1'...
** Static Database Test 'Create C_Item Index 1' has executed 1 Times, returning 0 row(s).

Performing Static Database Test - 'Create C_Stock Index 1'...
** Static Database Test 'Create C_Stock Index 1' has executed 1 Times, returning 0 row(s).

** Benchmark complete.

Total Time to perform the benchmark:

Elapsed : 0 Days 00:16:21.488

Benchmark Factory(TM)
Copyright (c) Quest Software 1990-2002. All rights reserved.

Executing Test 'TPC-C Transaction Mix'...

** Benchmark complete.

Total Time to perform the benchmark:

Elapsed : 1 Days 00:11:27.627

Benchmark Factory Transaction Log

Transactions

Benchmark Name: TPC-C - drop procedure
Benchmark Comment: drop procedure Delete New Order Procedure 1 drop procedure Delete Payment Procedure 1 drop procedure Delete Payment Procedure 2 drop procedure Delete Order Status Procedure 1 drop procedure Delete Order Status Procedure 2 drop procedure Delete Delivery Procedure drop procedure Delete Stock Level Procedure

Test Parameters:

Save Results: NO
Save Timings: NO
Kill Transaction: NO

Profile Information:

Driver: Oracle
Profile Name: LNX_9iRAC
Net Service Name: ORCL
Tablespace: BFTEST
User Name: system
Password: *****

Transactions

Benchmark Name: TPC-C - drop index
Benchmark Comment: drop index Drop C_Warehouse Index 1 drop index Drop C_District Index 1 drop index Drop C_Customer Index 1 drop index Drop C_Customer Index 2 drop index Drop C_New_Order Index 1 drop index Drop C_Order Index 1 drop index Drop C_Order_Line Index 1 drop index Drop C_Item Index 1 drop index Drop C_Stock Index 1

Test Parameters:

Save Results: NO
Save Timings: NO
Kill Transaction: NO

Profile Information:

Driver: Oracle
Profile Name: LNX_9iRAC
Net Service Name: ORCL
Tablespace: BFTEST
User Name: system
Password: *****

<u>Test Name</u>	<u>Type</u>	<u>Total Time</u>	<u>Rows</u>	<u>Stop</u>
<u>Time</u>	<u>Rows/Sec</u>	<u>TPS</u>	<u>Start Time</u>	<u>Min.</u>
<u>Time</u>	<u>Response Time</u>	<u>Retrieval Time</u>	<u>Avg. Time</u>	<u>Status</u>
<u>Time</u>	<u>Max. Time</u>	<u>Status</u>		
Drop C_Warehouse Index 1	Iteration by Loop 2.890 N/A COMPLETED.	00:00:00.346 16:28:15.906 0.246	0 16:28:16.252 0.246	N/A 0.246 0.246
Drop C_District Index 1	Iteration by Loop 4.717 N/A COMPLETED.	00:00:00.212 16:28:16.306 0.111	0 16:28:16.518 0.111	N/A 0.111 0.111
Drop C_Customer Index 1	Iteration by Loop 1.387 N/A COMPLETED.	00:00:00.721 16:28:16.570 0.621	0 16:28:17.291 0.621	N/A 0.621 0.621
Drop C_Customer Index 2	Iteration by Loop 1.431 N/A COMPLETED.	00:00:00.699 16:28:17.324 0.598	0 16:28:18.023 0.598	N/A 0.598 0.598
Drop C_New_Order Index 1	Iteration by Loop 1.658 N/A COMPLETED.	00:00:00.603 16:28:18.054 0.502	0 16:28:18.657 0.502	N/A 0.502 0.502
Drop C_Order Index 1	Iteration by Loop 1.610	00:00:00.621 16:28:18.694	0 16:28:19.315	N/A 0.520

	N/A	0.520	0.520	0.520
Drop C_Order_Line Index 1	COMPLETED. Iteration by Loop 1.120	00:00:00.893 16:28:19.346	0 16:28:20.239	N/A 0.792
	N/A	0.792	0.792	0.792
Drop C_Item Index 1	COMPLETED. Iteration by Loop 1.626	00:00:00.615 16:28:21.268	0 16:28:21.883	N/A 0.515
	N/A	0.515	0.515	0.515
Drop C_Stock Index 1	COMPLETED. Iteration by Loop 1.739	00:00:00.575 16:28:20.925	0 16:28:21.500	N/A 0.475
	N/A	0.475	0.475	0.475
	COMPLETED.			

** Benchmark complete.

Total Time to perform the benchmark:

Start Time: 10/20/03 16:28:15.746
End Time : 10/20/03 16:28:21.512
Elapsed : 0 Days 00:00:05.766

Transactions

Benchmark Name: TPC-C - drop table
Benchmark Comment: drop table Delete C_Warehouse Table drop table Delete C_District Table drop table Delete C_Customer Table drop table Delete C_History Table drop table Delete C_New_Order Table drop table Delete C_Order Table drop table Delete C_Order_Line Table drop table Delete C_Item Table drop table Delete C_Stock Table

Test Parameters:

Save Results: NO
Save Timings: NO
Kill Transaction: NO

Profile Information:

Driver: Oracle
Profile Name: LNX_9iRAC
Net Service Name: ORCL
Tablespace: BFTEST
User Name: system
Password: *****

<u>Test Name</u>	<u>Type</u>	<u>Total Time</u>	<u>Rows</u>	<u>Stop</u>
<u>Time</u>	<u>Rows/Sec</u>	<u>TPS</u>	<u>Start Time</u>	<u>Min.</u>
<u>Time</u>	<u>Response Time</u>	<u>Retrieval Time</u>	<u>Avg. Time</u>	
	<u>Max. Time</u>	<u>Status</u>		
Delete C_Warehouse Table	Iteration by Loop 1.522	00:00:00.657 16:28:21.905	0 16:28:22.562	N/A 0.555
	N/A	0.555	0.555	0.555
Delete C_District Table	COMPLETED. Iteration by Loop 1.603	00:00:00.624 16:28:22.596	0 16:28:23.220	N/A 0.523
	N/A	0.523	0.523	0.523
Delete C_Customer Table	COMPLETED. Iteration by Loop 1.019	00:00:00.981 16:28:23.254	0 16:28:24.235	N/A 0.880
	N/A	0.880	0.880	0.880
Delete C_History Table	COMPLETED. Iteration by Loop 3.268	00:00:00.306 16:28:24.266	0 16:28:24.572	N/A 0.205
	N/A	0.205	0.205	0.205
Delete C_New_Order Table	COMPLETED. Iteration by Loop 1.548	00:00:00.646 16:28:24.619	0 16:28:25.265	N/A 0.545
	N/A	0.545	0.545	0.545
Delete C_Order Table	COMPLETED. Iteration by Loop 1.410	00:00:00.709 16:28:25.289	0 16:28:25.998	N/A 0.609
	N/A	0.609	0.609	0.609
Delete C_Order_Line Table	COMPLETED. Iteration by Loop	00:00:01.015	0	N/A

	0.985	16:28:26.036	16:28:27.051	0.915
	N/A	0.915	0.915	0.915
	COMPLETED.			
Delete C_Item Table	Iteration by Loop	00:00:00.737	0	N/A
	1.357	16:28:28.103	16:28:28.840	0.637
	N/A	0.637	0.637	0.637
	COMPLETED.			
Delete C_Stock Table	Iteration by Loop	00:00:00.911	0	N/A
	1.098	16:28:28.874	16:28:29.785	0.810
	N/A	0.810	0.810	0.810
	COMPLETED.			

** Benchmark complete.

Total Time to perform the benchmark:

Start Time: 10/20/03 16:28:22.744
End Time : 10/20/03 16:28:29.801
Elapsed : 0 Days 00:00:07.057

Transactions

Benchmark Name: TPC-C - create table
Benchmark Comment: create table Create C_Warehouse Table create table Create C_District Table create table Create C_Customer Table create table Create C_History Table create table Create C_New_Order Table create table Create C_Order Table create table Create C_Order_Line Table create table Create C_Item Table create table Create C_Stock Table

Test Parameters:

Save Results: NO
Save Timings: NO
Kill Transaction: NO

Profile Information:

Driver: Oracle
Profile Name: LNX_9iRAC
Net Service Name: ORCL
Tablespace: BFTEST
User Name: system
Password: *****

<u>Test Name</u>	<u>Type</u>	<u>Total Time</u>	<u>Rows</u>	<u>Stop</u>
<u>Time</u>	<u>Rows/Sec</u>	<u>TPS</u>	<u>Start Time</u>	<u>Min.</u>
<u>Time</u>	<u>Response Time</u>	<u>Retrieval Time</u>	<u>Avg. Time</u>	
<u>Time</u>	<u>Max. Time</u>	<u>Status</u>		
Create C_Warehouse Table	Iteration by Loop	00:00:00.178	0	N/A
	5.618	16:28:29.951	16:28:30.129	0.078
	N/A	0.078	0.078	0.078
	COMPLETED.			
Create C_District Table	Iteration by Loop	00:00:00.151	0	N/A
	6.623	16:28:30.155	16:28:30.306	0.050
	N/A	0.050	0.050	0.050
	COMPLETED.			
Create C_Customer Table	Iteration by Loop	00:00:00.157	0	N/A
	6.369	16:28:30.343	16:28:30.500	0.057
	N/A	0.057	0.057	0.057
	COMPLETED.			
Create C_History Table	Iteration by Loop	00:00:00.146	0	N/A
	6.849	16:28:30.532	16:28:30.678	0.046
	N/A	0.046	0.046	0.046
	COMPLETED.			
Create C_New_Order Table	Iteration by Loop	00:00:00.139	0	N/A
	7.194	16:28:31.711	16:28:31.850	0.038
	N/A	0.038	0.038	0.038
	COMPLETED.			
Create C_Order Table	Iteration by Loop	00:00:00.143	0	N/A
	6.993	16:28:30.884	16:28:31.027	0.042
	N/A	0.042	0.042	0.042
	COMPLETED.			
Create C_Order_Line Table	Iteration by Loop	00:00:01.168	0	N/A
	0.856	16:28:31.052	16:28:32.220	1.067
	N/A	1.067	1.067	1.067

Create C_Item Table	COMPLETED.			
	Iteration by Loop	00:00:00.146	0	N/A
	6.849	16:28:32.255	16:28:32.401	0.045
	N/A	0.045	0.045	0.045
Create C_Stock Table	COMPLETED.			
	Iteration by Loop	00:00:00.163	0	N/A
	6.135	16:28:32.441	16:28:32.604	0.062
	N/A	0.062	0.062	0.062
	COMPLETED.			

** Benchmark complete.

Total Time to perform the benchmark:

Start Time: 10/20/03 16:28:29.746
End Time : 10/20/03 16:28:32.619
Elapsed : 0 Days 00:00:02.873

Transactions

Benchmark Name: TPC-C - create procedure
Benchmark Comment: create procedure Create New Order Procedure 1 create procedure Create Payment Procedure 1 create procedure Create Payment Procedure 2 create procedure Create Order Status Procedure 1 create procedure Create Order Status Procedure 2 create procedure Create Delivery Procedure create procedure Create Stock Level Procedure

Test Parameters:

Save Results: NO
Save Timings: NO
Kill Transaction: NO

Profile Information:

Driver: Oracle
Profile Name: LNX_9iRAC
Net Service Name: ORCL
Tablespace: BFTEST
User Name: system
Password: *****

Total Time to perform the benchmark:

Start Time: 10/20/03 16:28:33.744
End Time : 10/20/03 16:28:35.786
Elapsed : 0 Days 00:00:02.042

Transactions

Benchmark Name: TPC-C - load table
Benchmark Comment: load table Load C_Warehouse Table load table Load C_District Table load table Load C_Customer Table load table Load C_History Table load table Load C_New_Order Table load table Load C_Order Table load table Load C_Order_Line Table load table Load C_Item Table load table Load C_Stock Table

Test Parameters:

Save Results: NO
Save Timings: NO
Kill Transaction: NO

Profile Information:

Driver: Oracle
Profile Name: LNX_9iRAC
Net Service Name: ORCL
Tablespace: BFTEST
User Name: system
Password: *****

<u>Test Name</u>	<u>Type</u>	<u>Total Time</u>	<u>Rows</u>	<u>Stop</u>
<u>Time</u>	<u>Rows/Sec</u>	<u>TPS</u>	<u>Start Time</u>	<u>Min.</u>
<u>Time</u>	<u>Response Time</u>	<u>Retrieval Time</u>	<u>Avg. Time</u>	
	<u>Max. Time</u>	<u>Status</u>		

Load C_Warehouse Table	Iteration by Loop 6.494 N/A COMPLETED.	00:00:00.154 16:28:35.900 0.053	4 16:28:36.054 0.053	N/A 0.053 0.053
Load C_District Table	Iteration by Loop 7.692 N/A COMPLETED.	00:00:00.130 16:28:36.091 0.029	40 16:28:36.221 0.029	N/A 0.029 0.029
Load C_Customer Table	Iteration by Loop 0.019 N/A COMPLETED.	00:00:51.605 16:28:37.246 51.503	120000 16:29:28.851 51.503	N/A 51.503 51.503
Load C_History Table	Iteration by Loop 0.110 N/A COMPLETED.	00:00:09.075 16:29:28.905 8.974	120000 16:29:37.980 8.974	N/A 8.974 8.974
Load C_New_Order Table	Iteration by Loop 0.495 N/A COMPLETED.	00:00:02.019 16:29:37.018 1.919	36000 16:29:39.037 1.919	N/A 1.919 1.919
Load C_Order Table	Iteration by Loop 0.067 N/A COMPLETED.	00:00:14.919 16:29:39.071 14.818	120000 16:29:53.990 14.818	N/A 14.818 14.818
Load C_Order_Line Table	Iteration by Loop 0.011 N/A COMPLETED.	00:01:30.604 16:29:54.032 90.504	1201509 16:31:24.636 90.504	N/A 90.504 90.504
Load C_Item Table	Iteration by Loop 0.112 N/A COMPLETED.	00:00:08.968 16:31:24.665 8.868	100000 16:31:33.633 8.868	N/A 8.868 8.868
Load C_Stock Table	Iteration by Loop 0.013 N/A COMPLETED.	00:01:18.685 16:31:33.672 78.584	400000 16:32:52.357 78.584	N/A 78.584 78.584

** Benchmark complete.

Total Time to perform the benchmark:

Start Time: 10/20/03 16:28:35.745
End Time : 10/20/03 16:32:52.371
Elapsed : 0 Days 00:04:16.626

Transactions

Benchmark Name: TPC-C - create index
Benchmark Comment: create index Create C_Warehouse Index 1 create index Create C_District Index 1 create index Create C_Customer Index 1 create index Create C_Customer Index 2 create index Create C_New_Order Index 1 create index Create C_Order Index 1 create index Create C_Order_Line Index 1 create index Create C_Item Index 1 create index Create C_Stock Index 1

Test Parameters:

Save Results: NO
Save Timings: NO
Kill Transaction: NO

Profile Information:

Driver: Oracle
Profile Name: LNX_9iRAC
Net Service Name: ORCL
Tablespace: BFTEST
User Name: system
Password: *****

<u>Test Name</u>	<u>Type</u>	<u>Total Time</u>	<u>Rows</u>	<u>Stop</u>
<u>Time</u>	<u>Rows/Sec</u>	<u>TPS</u>	<u>Start Time</u>	<u>Min.</u>
<u>Time</u>	<u>Response Time</u>	<u>Retrieval Time</u>	<u>Avg. Time</u>	
	<u>Max. Time</u>	<u>Status</u>		
Create C_Warehouse Index 1	Iteration by Loop 3.906	00:00:00.256 16:32:52.946	0 16:32:53.202	N/A 0.155

	N/A	0.155	0.155	0.155
COMPLETED.				
Create C_District Index 1	Iteration by Loop	00:00:00.157	0	N/A
	6.369	16:32:53.228	16:32:53.385	0.057
	N/A	0.057	0.057	0.057
COMPLETED.				
Create C_Customer Index 1	Iteration by Loop	00:00:07.759	0	N/A
	0.129	16:32:53.414	16:33:01.173	7.659
	N/A	7.659	7.659	7.659
COMPLETED.				
Create C_Customer Index 2	Iteration by Loop	00:00:07.604	0	N/A
	0.132	16:33:02.217	16:33:09.821	7.502
	N/A	7.502	7.502	7.502
COMPLETED.				
Create C_New_Order Index 1	Iteration by Loop	00:00:00.609	0	N/A
	1.642	16:33:08.860	16:33:09.469	0.508
	N/A	0.508	0.508	0.508
COMPLETED.				
Create C_Order Index 1	Iteration by Loop	00:00:01.761	0	N/A
	0.568	16:33:09.500	16:33:11.261	1.661
	N/A	1.661	1.661	1.661
COMPLETED.				
Create C_Order_Line Index 1	Iteration by Loop	00:00:20.426	0	N/A
	0.049	16:33:12.295	16:33:32.721	20.324
	N/A	20.324	20.324	20.324
COMPLETED.				
Create C_Item Index 1	Iteration by Loop	00:00:01.657	0	N/A
	0.604	16:33:31.762	16:33:33.419	1.557
	N/A	1.557	1.557	1.557
COMPLETED.				
Create C_Stock Index 1	Iteration by Loop	00:15:40.741	0	N/A
	0.001	16:33:33.474	16:49:14.215	940.641
	N/A	940.641	940.641	940.641
COMPLETED.				

** Benchmark complete.

Total Time to perform the benchmark:

Start Time: 10/20/03 16:32:52.745
End Time : 10/20/03 16:49:14.233
Elapsed : 0 Days 00:16:21.488

Mixed Workload Database Benchmark

Benchmark ID: 72
Benchmark Name: TPC-C Transaction Mix
Benchmark Comment:
Timing File: .tim

Profile Information:

Driver: Oracle
Profile Name: LNX_9iRAC
Net Service Name: ORCL
Tablespace: BFTEST
User Name: system
Password: *****

Test Options:

Stop Benchmark after First Error: NO
Agents Log Transaction Results to disk: NO
Agents Log Transaction Times to disk: NO

Save Real-Time Counter Information: YES
Save User Statistics: YES
Save Transaction Statistics Summary to Repository: YES
Save Response Distribution: YES
Save Transaction Time Distribution to Repository: YES
Save Statistics during Rampup & Rampdown: NO
Save Transaction Timings to Repository: NO

Test Parameters:

Iterations: (100)
Latency No Delay specified
Execution Time: 00:03:45
Rampup Time: 00:05:00
Rampdown Time: 00:01:15
Quiet Time: 00:00:30

Transaction Mix:

Name	Weight	Probability
New Order Transaction	450	45.00 %
Payment Transaction	430	43.00 %
Order-Status Transaction	40	4.00 %
Delivery Transaction	40	4.00 %
Stock-Level Transaction	40	4.00 %

Benchmark Summary Statistics:

Userload	TPS	Rows	Bytes	Avg Time	Min Time	Max Time	Errors
100	5.152	1543	495434	0.351	0.005	32.668	0

** Benchmark complete.

Total Time to perform the benchmark:

Start Time: 10/20/03 16:49:14.745
End Time : 10/21/03 17:00:42.372
Elapsed : 1 Days 00:11:27.627

appendix g: Forced Rescan of Devices

Prior to adding LUN #5 at the storage level and rescanning:

```
cat /proc/scsi/scsi
Attached devices:
Host: scsi2 Channel: 00 Id: 00 Lun: 00
  Vendor: HP      Model: OPEN-9*4      Rev: 2106
  Type:   Direct-Access      ANSI SCSI revision: 02
Host: scsi2 Channel: 00 Id: 00 Lun: 01
  Vendor: HP      Model: OPEN-9*4      Rev: 2106
  Type:   Direct-Access      ANSI SCSI revision: 02
Host: scsi2 Channel: 00 Id: 00 Lun: 02
  Vendor: HP      Model: OPEN-9*3      Rev: 2106
  Type:   Direct-Access      ANSI SCSI revision: 02
Host: scsi2 Channel: 00 Id: 00 Lun: 03
  Vendor: HP      Model: OPEN-9      Rev: 2106
  Type:   Direct-Access      ANSI SCSI revision: 02
Host: scsi2 Channel: 00 Id: 00 Lun: 04
  Vendor: HP      Model: OPEN-9      Rev: 2106
  Type:   Direct-Access      ANSI SCSI revision: 02
```

LUN #5 was added to the XP ports (CL1-E, CL1-F) that the servers connected to. Then the HBA and OS levels were rescanned:

```
[root@racnode1 root]# echo "scsi-qlascan" > /proc/scsi/qla2300/2
[root@racnode1 root]# echo "scsi-qlascan" > /proc/scsi/qla2300/3
[root@racnode1 root]# echo "scsi-add-singledevice 2 0 0 5" > /proc/scsi/scsi
[root@racnode1 root]# echo "scsi-add-singledevice 3 0 0 5" > /proc/scsi/scsi
```

Then, LUN #5 appeared at the OS level:

```
[root@racnode1 root]# cat /proc/scsi/scsi
Attached devices:
Host: scsi2 Channel: 00 Id: 00 Lun: 00
  Vendor: HP      Model: OPEN-9*4      Rev: 2106
  Type:   Direct-Access      ANSI SCSI revision: 02
Host: scsi2 Channel: 00 Id: 00 Lun: 01
  Vendor: HP      Model: OPEN-9*4      Rev: 2106
  Type:   Direct-Access      ANSI SCSI revision: 02
Host: scsi2 Channel: 00 Id: 00 Lun: 02
  Vendor: HP      Model: OPEN-9*3      Rev: 2106
  Type:   Direct-Access      ANSI SCSI revision: 02
Host: scsi2 Channel: 00 Id: 00 Lun: 03
  Vendor: HP      Model: OPEN-9      Rev: 2106
  Type:   Direct-Access      ANSI SCSI revision: 02
Host: scsi2 Channel: 00 Id: 00 Lun: 04
  Vendor: HP      Model: OPEN-9      Rev: 2106
  Type:   Direct-Access      ANSI SCSI revision: 02
Host: scsi2 Channel: 00 Id: 00 Lun: 05
  Vendor: HP      Model: OPEN-9      Rev: 2106
  Type:   Direct-Access      ANSI SCSI revision: 02
```

```
[root@racnode1 root]# cat /proc/scsi/qla2300/2
QLogic PCI to Fibre Channel Host Adapter for QLA2340:
  Firmware version: 3.02.16, Driver version 6.06.50b4-fo
Entry address = f885b060
HBA: QLA2312 , Serial# H32560
Request Queue = 0x366a4000, Response Queue = 0x36690000
Request Queue count= 128, Response Queue count= 512
Total number of active commands = 0
Total number of interrupts = 106539826
Total number of IOCBs (used/max) = (0/600)
Total number of queued commands = 0
  Device queue depth = 0x20
Number of free request entries = 31
```

```
Number of mailbox timeouts = 0
Number of ISP aborts = 0
Number of loop resyncs = 17
Number of retries for empty slots = 0
Number of reqs in pending_q= 0, retry_q= 0, done_q= 0, scsi_retry_q= 0
Number of reqs in failover_q= 0
Host adapter:loop state= <READY>, flags= 0x8e0833
Dpc flags = 0x40
MBX flags = 0x0
SRB Free Count = 4096
Link down Timeout = 008
Port down retry = 016
Login retry count = 016
Commands retried with dropped frame(s) = 0
```

```
SCSI Device Information:
scsi-qla0-adapter-node=200000e08b0b902d;
scsi-qla0-adapter-port=210000e08b0b902d;
scsi-qla0-port-0=50060e8003753905:50060e8003753905;
```

```
SCSI LUN Information:
(Id:Lun) * - indicates lun is not registered with the OS.
( 0: 0): Total reqs 106818175, Pending reqs 0, flags 0x0, 0:0:81,
( 0: 1): Total reqs 95, Pending reqs 0, flags 0x0, 0:0:81,
( 0: 2): Total reqs 95, Pending reqs 0, flags 0x0, 0:0:81,
( 0: 3): Total reqs 12, Pending reqs 0, flags 0x0, 0:0:81,
( 0: 4): Total reqs 13, Pending reqs 0, flags 0x0, 0:0:81,
( 0: 5): Total reqs 16, Pending reqs 0, flags 0x0, 0:0:81,
```

```
[root@racnode1 root]# cat /proc/scsi/qla2300/3
QLogic PCI to Fibre Channel Host Adapter for QLA2340:
    Firmware version: 3.02.16, Driver version 6.06.50b4-fo
Entry address = f885b060
HBA: QLA2312 , Serial# H32354
Request Queue = 0x36570000, Response Queue = 0x36560000
Request Queue count= 128, Response Queue count= 512
Total number of active commands = 0
Total number of interrupts = 253761
Total number of IOCBs (used/max) = (0/600)
Total number of queued commands = 0
    Device queue depth = 0x20
Number of free request entries = 31
Number of mailbox timeouts = 0
Number of ISP aborts = 0
Number of loop resyncs = 12
Number of retries for empty slots = 0
Number of reqs in pending_q= 0, retry_q= 0, done_q= 0, scsi_retry_q= 0
Number of reqs in failover_q= 0
Host adapter:loop state= <READY>, flags= 0x8e0833
Dpc flags = 0x40
MBX flags = 0x0
SRB Free Count = 4096
Link down Timeout = 008
Port down retry = 016
Login retry count = 016
Commands retried with dropped frame(s) = 0
```

```
SCSI Device Information:
scsi-qla1-adapter-node=200000e08b0bc22c;
scsi-qla1-adapter-port=210000e08b0bc22c;
scsi-qla1-port-0=50060e8003753904:50060e8003753904;
```

```
SCSI LUN Information:
(Id:Lun) * - indicates lun is not registered with the OS.
```

For more information

www.hp.com/go/somewhere

HP Partitioning Continuum, HP, 2002

HP ENSAextended technical overview, HP, 2003

HP Utility Data Center Overview, HP, 2002

For information specific to the PDC kits, please email rac_contact@hp.com.

Call to action

www.hp.com/go/somewhere

HP Partitioning Continuum, HP, 2002

HP ENSAextended technical overview, HP, 2003

HP Utility Data Center Overview, HP, 2002

© 2003 Hewlett-Packard Development Company, L.P. The information contained herein is subject to change without notice. The only warranties for HP products and services are set forth in the express warranty statements accompanying such products and services. Nothing herein should be construed as constituting an additional warranty. HP shall not be liable for technical or editorial errors or omissions contained herein.

Itanium is a trademark or registered trademark of Intel Corporation in the U.S. and other countries and is used under license.

XXXX-XXXXEN, 09/2003

