

The SmartTools  
for Windows 95

# Contents

<b>Introduction</b> .....	<b>3</b>
SmartTools .....	3
SmartDisplay .....	3
SmartDesktop .....	4
<b>Using SmartTools</b> .....	<b>5</b>
Starting SmartTools .....	5
Customizing toolbars .....	6
Setting toolbar properties .....	9
Deleting toolbars .....	10
Assigning hotkeys .....	11
Removing hotkeys .....	12
<b>Using SmartDisplay</b> .....	<b>13</b>
Setting a display mode .....	14
Customizing display modes .....	14
Setting display modes using the Wizard .....	14
Setting display modes using the Settings button .....	15
<b>Using SmartDesktop</b> .....	<b>21</b>
The SmartDesktop toolbar .....	21
Smart Zoom .....	22
Moving around the desktop .....	22
Maximized Windows .....	23
Property Sheet .....	23
The SmartDesktop Display Properties page .....	23
Schemes .....	24
<b>Index</b> .....	<b>26</b>

The SmartTools are a new set of applications which let you get the most out of the powerful capabilities of your graphics card, giving you more control over the appearance and behavior of your Windows desktop.

There are three Smart applications, SmartTools, SmartDisplay and SmartDesktop, each of which adds power to the way you use your Windows desktop.

## SmartTools

SmartTools lets you create toolbars to give you more control and quicker access to your Windows applications and documents.

With SmartTools you can:

- Use toolbars for the other Smart applications, and customize these toolbars to suit your needs.
- Create toolbars for other applications, adding buttons for the programs, documents and files you use most.
- Assign hotkeys for commands that you use most often.

## SmartDisplay

SmartDisplay makes it easier and quicker for you to set up the display properties for your monitor.

SmartDisplay gives you:

- A SmartDisplay Wizard, which guides you through a step by step procedure that helps you find the ideal display settings for the kind of work you are doing.

- A SmartDisplay set up procedure for advanced users, which lets you select the display size, color palette, refresh rate, desktop size, connectivity and monitor alignment for your display.

## **SmartDesktop**

SmartDesktop is an application which controls the appearance and behavior of your desktop.

With SmartDesktop you can:

- Use a virtual desktop, where the desktop size is larger than the display size. SmartDesktop controls the way you move around the desktop and reach the off-screen portion of your desktop.
- Change the display size at the touch of a button, allowing you to zoom in and zoom out while you are working.

# Using SmartTools

With SmartTools, you can customize the toolbars for the other Smart applications and create toolbars of your own.

## Starting SmartTools

To start SmartTools, press the Start button, choose Programs, then GrafixStar, then SmartTools, or use the shortcut on the desktop.

The following screen appears:



## Customizing toolbars

The Customize Toolbars page of the SmartTools window lets you create new toolbars and customize existing ones. When you press the Customize Toolbars tab, the following page appears:



### Creating a new toolbar

You can create new toolbars and add them to the list of toolbars on the Toolbar Properties page.

To create a new toolbar:

1. Click on the Customize Toolbars tab of the SmartTools window.
2. Click on any button in the Commands list or on one of the items in the Applications list and drag it off the SmartTools window.

The new toolbar will contain the button that you dragged off the list, or all the buttons for the application that you dragged off the list.

## Opening and closing toolbars

With SmartTools, you can use toolbars to perform functions and run applications quickly and easily. A toolbar contains a set of buttons which, when clicked, perform a Smart Application function or run another application.

To open a toolbar:

1. Click the Toolbar Properties tab in the SmartTools window.
2. In the toolbars list, check the box next to the name of the toolbar you want to open.

To close a toolbar:

1. Click the Toolbar Properties tab in the SmartTools window.
2. In the toolbars list, uncheck the box next to the name of the toolbar you want to close, or use the close button on the toolbar itself.

## Adding buttons to a toolbar

You can add buttons for performing Smart Application functions or launching other applications to any toolbar.

You can also add a separator, which puts a space between buttons. This is useful if you want to group buttons into related tasks.

To add buttons to a toolbar:

1. Open the toolbar you want to modify by clicking the Toolbars tab and checking the toolbar.
2. Click the Customize Toolbar tab.
3. Select one of the Smart applications or another application from the Applications list.
4. Select the button you want to add to the toolbar from the commands list, and drag it onto the toolbar in the position that you want.

## **Moving and deleting buttons from a toolbar**

You can move or delete buttons on any toolbar.

To move a button on a toolbar:

1. Open the toolbar you want to modify by clicking the Toolbars tab and checking the toolbar.
2. Hold down the **SHIFT** key and click on the button you want to move.
3. Drag the button to the position you want on the toolbar.

To delete a button, simply drag it off the toolbar.

## **Adding buttons to the Other Apps Commands list**

You can add buttons to the list of other applications commands. You can then add these buttons to a toolbar to access a program or file that you use frequently.

To add buttons to the Other Apps Commands list:

1. Click the Customize Toolbars tab.
2. Select Other Apps from the Applications list.
3. Click the Add button. This opens a window which lets you browse through your system to select the application you want to create a button for.
4. Select the application or file and click on Open.

A new button for the application you have just chosen appears in the Commands list.

## **Deleting buttons from the Other Apps Commands list**

You can delete buttons from the list of other applications commands.

To delete buttons from the Other Apps Commands list:

1. Click the Customize Toolbars tab.
2. Select Other Apps from the Applications list.
3. Select the button you want to delete from the Commands list.
4. Click the Delete button to remove the button from the list.



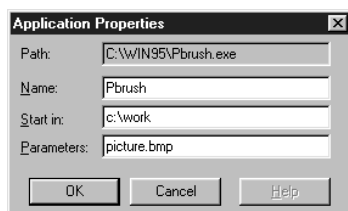
## Setting properties for Other Apps buttons

SmartTools lets you set properties for the applications opened using toolbar buttons.

To set properties for Other Apps buttons:

1. Click the Customize Toolbars tab.
2. Select Other Apps from the Applications list.
3. Select the button you want to set the properties for from the Commands list.
4. Click on the properties button.

The following dialog box appears:



You can set the name of the button as it appears in the commands list, the default directory used by the application (optional) and any parameters that are passed when the application is run (optional).

## Setting toolbar properties

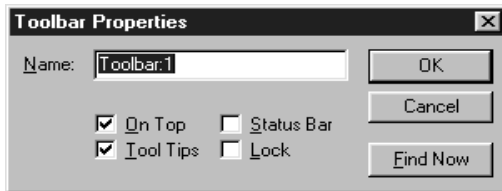
You can set properties for each toolbar. The properties define the way a toolbar looks and behaves.

To change the toolbar properties:

1. Click the Toolbar Properties tab in the SmartTools window.
2. Select the toolbar whose properties you want to change.
3. Press the Properties button.

Alternatively, you can right click on the toolbar and choose Properties.

The following dialog box appears:



The following properties are available:

### **Name**

Lets you assign a name for your toolbar.

### **On Top**

Keeps the toolbar on top of all other windows on the desktop.

### **Tool Tips**

Displays tool tips when the pointer is placed over a button on the toolbar. The toolbar must be the active window for the tool tips to work.

### **Lock**

Keeps the toolbar in the same position on the screen when you move around the desktop.

### **Status Bar**

Displays the current display size and desktop size at the bottom of the toolbar.

## **Deleting toolbars**

You can remove a toolbar from the list of those available.

To delete a toolbar:

1. Click the Toolbar Properties tab in the SmartTools window.
2. Highlight the toolbar in the Toolbar list.
3. Click on the Delete button on the Toolbar page or press the DEL key on the keyboard.

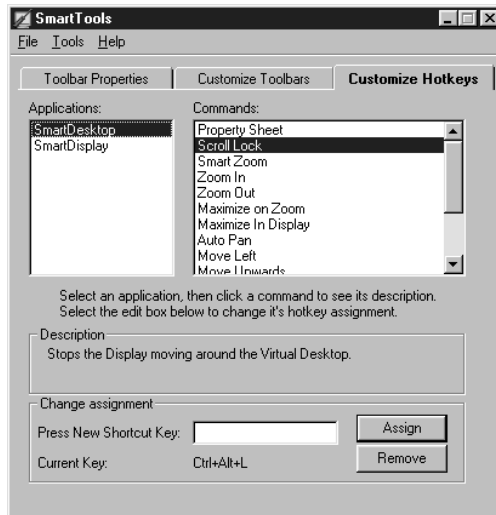
## Assigning hotkeys

You can assign hotkey combinations to the toolbar commands you use most often. Pressing a hotkey combination has the same effect as clicking on the toolbar button.

To assign a hotkey to a toolbar button:

1. Click the Customize Hotkeys tab in the SmartTools window.

The following page appears:



2. Select the application for which you want to assign a hotkey from the Applications list.
3. Select the button that you want to assign a hotkey to from the Commands list.
4. Place the cursor in the Press New Shortcut Key list and press the hotkey combination that you want for your function. You can use any combination of SHIFT, CTRL and ALT, plus the other keys on the keyboard.
5. Click Assign.

Note: The hotkey combination you assign here will override any shortcuts used by other applications. If you try to enter a key combination that is commonly used by other applications, a warning message will appear asking you if you really want to use this hotkey combination.

## Removing hotkeys

You can easily remove any hotkey combination that you previously assigned or that were there by default.

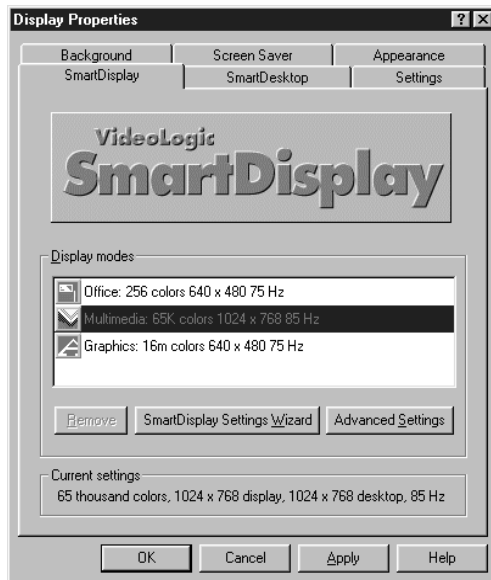
To remove a hotkey from a toolbar button:

1. Click the Customize Hotkeys tab in the SmartTools window.
2. Select the application from which you want to remove a hotkey from the Applications list.
3. Select the button from which you want to remove a hotkey from the Commands list.
4. Click Remove.

# Using SmartDisplay

SmartDisplay is an application that lets you select, customize and create display modes for your monitor. To use SmartDisplay:

1. Select the Display Properties Control Panel either by right-clicking on the Windows background and choosing Properties from the menu or by pressing the Start button, choosing Settings, then Control Panels, then Display.
2. Click the SmartDisplay tab. The following dialog appears:



## Setting a display mode

The SmartDisplay page contains a list of display modes. You can use this list to switch between preset display modes.

To apply a display mode:

1. Select the display mode you want to use from the Display Mode list.
2. Choose Apply or OK.

## Customizing display modes

You can customize a display mode to give it the properties that you want. There are two ways of doing this, depending on how familiar you are with setting display modes.

If you have never set a display mode before, or if you need help in choosing your settings, you should use the SmartDisplay Settings Wizard. This takes you through a step-by-step procedure for setting up your display mode.

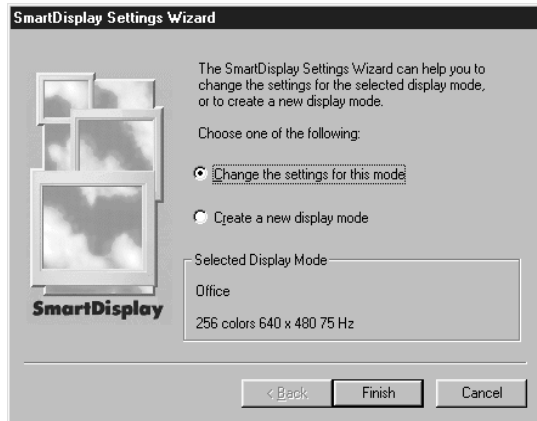
If you are familiar with setting display modes, you should use the Settings button. This lets you choose your display mode settings quickly and easily.

## Setting display modes using the Wizard

The Wizard takes you through a step by step procedure for setting up a display mode.

To use the Wizard:

1. Choose the SmartDisplay page on the Display Properties window.
2. Select the display mode you want to modify from the Display Modes list.
3. Click on the SmartDisplay Settings Wizard button. The following Wizard dialog appears:



4. Follow the instructions given by the Wizard.

## Setting display modes using the Settings button

This procedure lets you choose the settings for your display mode. You should only use it if you are familiar with setting display modes.

To set a display mode:

1. Choose the SmartDisplay page on the Display Properties window.
2. Select the display mode you want to modify from the Display Modes list.
3. Click on the Settings button.

This takes you to the SmartDisplay Advanced Settings window. This window has five pages: Display, Desktop, Connectivity, Center Display and Properties.

### Settings - Display

The Display page lets you choose the Display Area, Refresh Rate and Color Palette for your display.

To set up your display mode:

1. Click the Display tab on the SmartDisplay Expert Configuration window.



2. Use the Display area slider to choose the display size, from 640 x 480 (Standard VGA) to the largest size supported by your monitor.
3. Use the Color palette slider to choose the number of colors you want to use in your display. Note that the larger your display size is, the fewer colors you can use. If you try to choose a number of colors that your display size cannot support, the display size is reduced to compensate.
4. Select the refresh rate you want for your display from the Refresh Rate list box. The higher the refresh rate, the more stable and flicker-free your display.
5. Confirm by clicking OK or Apply.

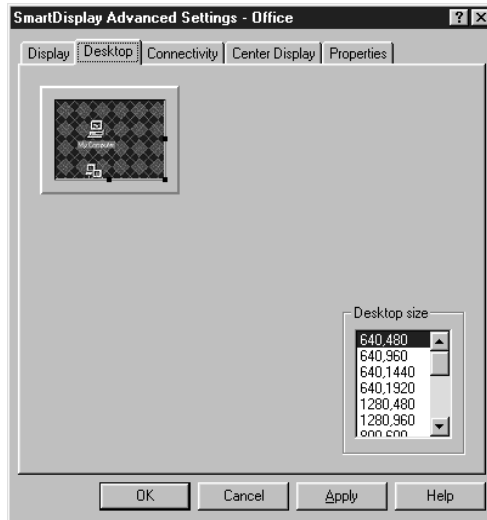
## Settings - Desktop

With SmartDisplay, you can select a desktop size which is larger than your display size (sometimes known as a 'virtual desktop'). You can then use SmartDesktop to control the way your desktop is used.



To set the desktop size:

1. Click the Desktop tab on the SmartDisplay Advanced Settings window.



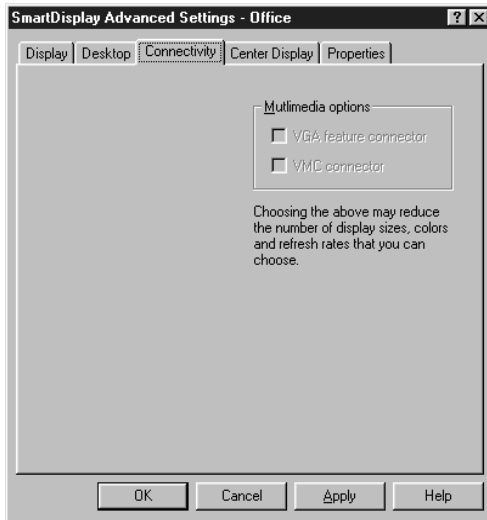
2. Drag the edges or corners of the display diagram to fit one of the preset sizes, or select a desktop size from the list box.
3. Confirm by clicking OK or Apply.

### **Settings - Connectivity**

If you have a multimedia option card connected to your display card, you will be limited in the types of display mode you can use. You should check the appropriate box for the kind of connection you are using.

To set your type of connector:

1. Click the Connectivity tab on the SmartDisplay Advanced Settings window.



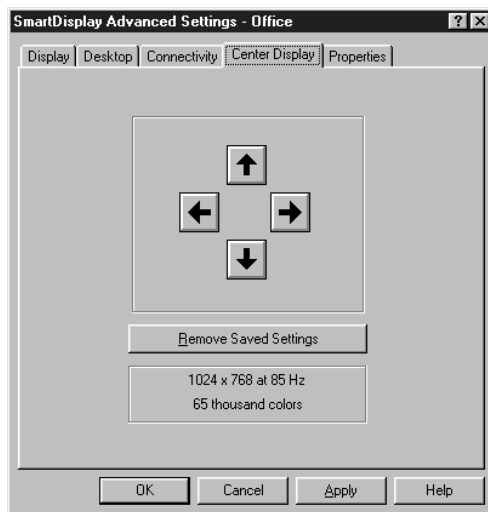
2. Check the type of connector you are using.
3. Confirm by clicking OK or Apply.

### **Settings - Center Display**

After you have changed display mode, the display often appears off-center on the screen. You can use SmartDisplay to adjust the position of the display on your screen, without using your monitor controls. SmartDisplay stores the position of the display for the particular display mode, and uses it whenever you access the same display mode again.

To center your display on the screen:

1. Click the Center Display tab on the SmartDisplay Advanced Settings window.



2. Click on the arrows to move the display in the required direction.
3. Confirm by clicking OK or Apply.

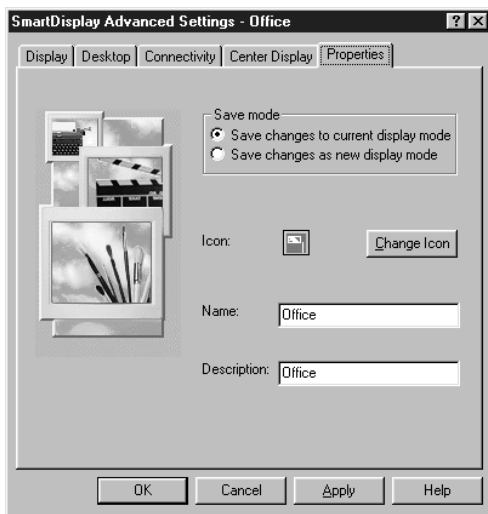
If you want, you can return all display modes to their original alignment by clicking Remove Saved Settings. You should only use this if you are about to connect a different monitor to your PC.

## Settings - Properties

The Properties page of the SmartDisplay Advanced Settings window lets you identify your display mode by selecting an icon and name for your display mode as it appears in the Display Modes list on the SmartDisplay tab of the Display Properties window. It also provides a place for a brief description of the display mode.

To set the properties for your display mode:

1. Click the Properties tab on the SmartDisplay Advanced Settings window.



2. Change the icon, name or description of your display mode.
3. Choose OK or Apply.

### **Creating a new display mode**

You can add your own display modes to those already in the Display Modes list. You can do this either using the Display Mode Wizard, or by following the procedure below.

To create a new display mode:

1. Choose the Smart Display tab in the display properties window.
2. Select one of the existing display modes from the Display Modes list.
3. Press the settings button.
4. Select the Properties tab.
5. Select the Save changes as a new display mode button.
6. Enter a new name in the Name box and click OK or Apply.

You can now modify the settings for this new mode using the Display, Desktop, Connectivity and Center Display tabs.

# Using SmartDesktop

SmartDesktop is an application which controls the appearance and behavior of your desktop. You can use Smart Desktop to set a virtual desktop, where the desktop size is larger than the display size, and you can change the display size at the touch of a button, allowing you to zoom in and zoom out while you are working.

To use the SmartDesktop functions, you use the toolbar for Smart Desktop, created using SmartTools.

You can use the SmartDesktop Properties page to set properties which control the way SmartDesktop works.

## The SmartDesktop toolbar

Using SmartTools, you can create a toolbar for running SmartDesktop.

To create a SmartDesktop Toolbar:

1. Start SmartTools.
2. Click on the Customize Toolbars tab.
3. Click on SmartDesktop in the applications list and drag it off the desktop.

The SmartDesktop toolbar appears as follows:



## Smart Zoom



When you have SmartZoom selected, you can use all the ‘Virtual Desktop’ functions: when you zoom in or zoom out with Smart Zoom selected, only the display size changes; the desktop size stays the same. You can also use the functions such as Scroll Lock, Auto Pan Maximize on Zoom and Maximize on Display to control the way your desktop behaves.



SmartDesktop lets you zoom in and zoom out your display using the Zoom In and Zoom Out buttons. You can keep pressing the zoom in button until the display size reaches the smallest size available (640 x 480). You can keep pressing the zoom out button until the display size reaches the largest size available (this is set using SmartDisplay).

You can also use the Zoom Display Fully In and Zoom Display Fully Out functions to zoom directly to the smallest and largest display sizes for your monitor. These functions are available as hot keys and SmartTools menu items.

If SmartZoom is not selected, the only two SmartDesktop functions you can use are zoom in and zoom out. When you zoom in or zoom out (or use Zoom Display Fully In or Zoom Display Fully Out), the desktop size becomes the same as the display size.

## Moving around the desktop



If you are using a desktop size which is larger than your current display size, there are several ways that you can move to the parts of the desktop which are currently off-screen:

By moving the mouse. As you move the mouse to the edge of the screen, the display automatically scrolls to the parts of the screen which you are moving towards.

By pressing the Move Up, Move Down, Move Left and Move Right buttons on the toolbar, or by pressing the hotkey combinations assigned to these buttons.



**Note:** If you have Auto Pan enabled, and you switch to a window which is currently off-screen (using ALT-TAB, or using the taskbar), the screen scrolls automatically to the window you selected.



You can disable scrolling functions by selecting Scroll Lock. This is useful if you want to work on a particular area of the desktop without accidentally moving to other areas.

## Maximized Windows

SmartDesktop has two functions which let you select the way that maximized windows behave.

### Maximize on Zoom



When this is selected, all maximized windows fit the new display size when you zoom in or zoom out.

### Maximize in Display



When this is selected, maximized windows fit the display size. When this is not selected, maximized windows fit the desktop size.

## Property Sheet



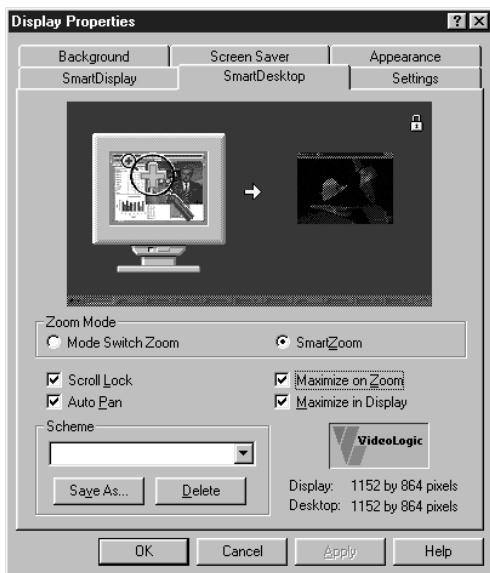
You can use this button to access the SmartDesktop Display Properties page. This is described on the next page.

## The SmartDesktop Display Properties page

The SmartDesktop Properties page provides you with an alternative way of setting SmartDisplay's characteristics.

To open the SmartDesktop Display Properties page:

1. Select the Display Properties Control Panel either by right-clicking on the Windows background and choosing Properties from the menu or by pressing the Start button, choosing Settings, then Control Panels, then Display, or by using the Property Sheet button to on the toolbar.
2. Click the SmartDesktop tab. The following page appears:



## Schemes

Schemes are a useful way of saving combinations of SmartDesktop functions. Each scheme that you create saves a different combination of SmartDesktop settings that you can access again at any time.

### Using Schemes

To use a scheme:

1. Access the SmartDesktop page of the Display Properties window.
2. Select a scheme from the Scheme list box.



## **Creating Schemes**

To create a new scheme:

1. Access the SmartDesktop page of the Display Properties window.
2. Check the options that you want for your scheme.
3. Click Save As.
4. Type a name for your scheme and click OK.

## **Deleting Schemes**

To delete a scheme:

1. Access the SmartDesktop page of the Display Properties window.
2. Select the scheme that you want to remove in the Schemes list box.
3. Click Delete.

# Index

## C

centering the screen	18
color palette	15
colors	15
connectivity	17

## D

desktop area	16
desktop size	16
display area	15
display modes	
setting a display mode	14
wizard	14
display size	15

## H

hotkeys	
assigning	11
removing	12

## R

refresh rate	15
--------------	----

## S

screen centering	18
setting display modes	14
SmartDesktop for Windows 95	21
SmartDesktop Schemes	24
SmartDisplay	13
SmartTools	5

## T

toolbars	5
closing	9
creating	6
customizing	6
opening	9
properties	9