

5. FOR MATERIAL LIST SEE SHEET 4.

6. HARDWARE CALLOUTS PER XEROX SPEC 155984.

7. TIGHTEN ALL SCREWS FROM 5 TO 12 INCH POUNDS.

8. MAY BE PURCHASED FROM TINNEMAN PRODUCTS INC, CLEVELAND, OHIO VENDOR PART NUMBER.

NOTES: UNLESS OTHERWISE SPECIFIED

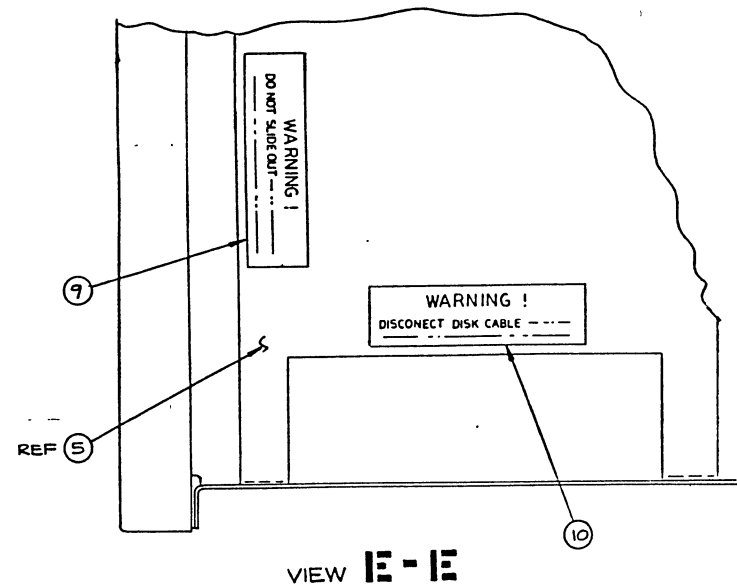
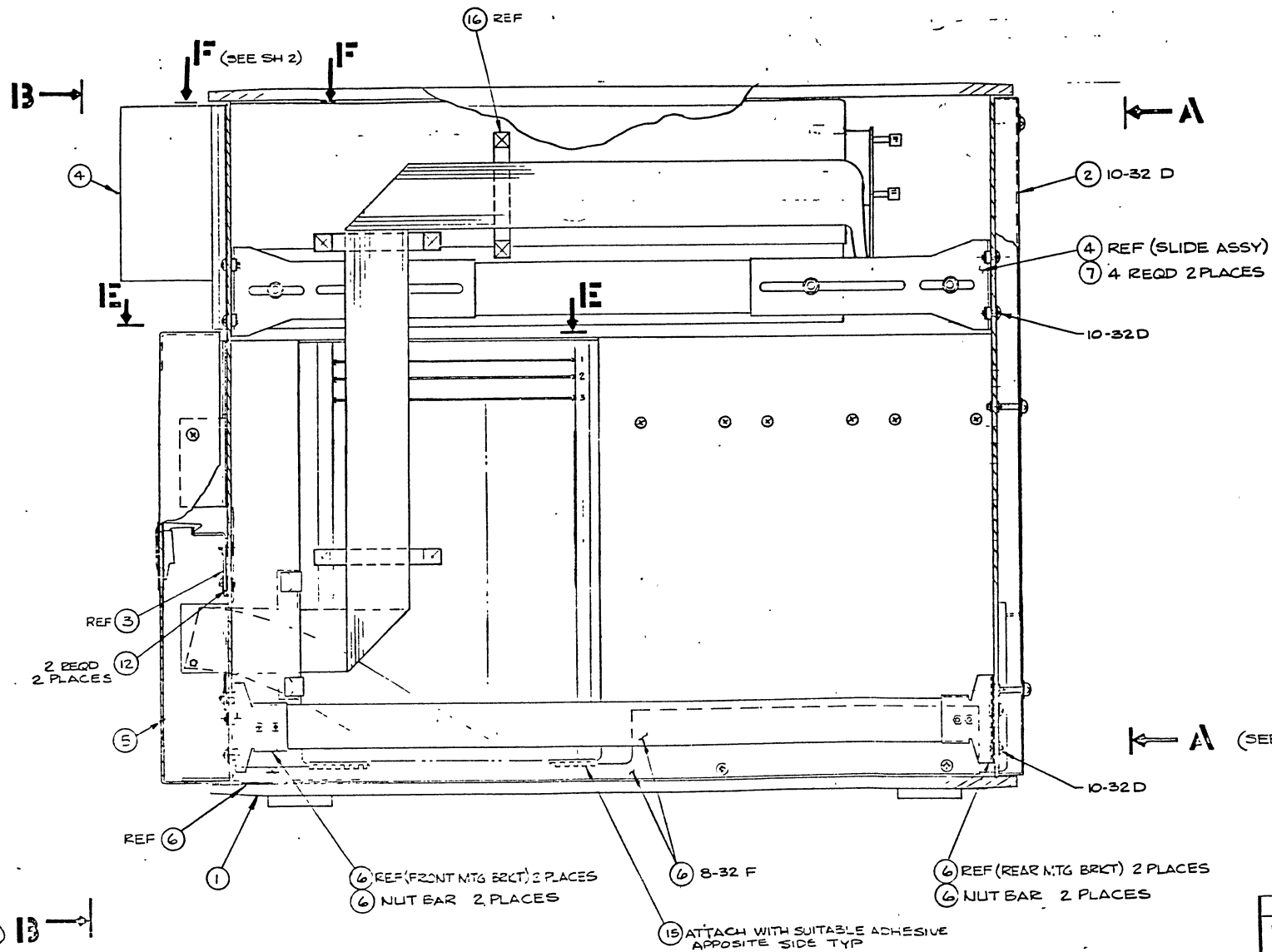
1. ADHERE NAMEPLATE (ITEM 11) ON SURFACE INDICATED. TYPEWRITE PART NUMBER.

2. LOCATE NUT CLIP (ITEM 7) ON MTG RAILS AS SHOWN ON DETAILS C & D.

3. MAY BE PURCHASED FROM INGERSOLL PRODUCTS, CHICAGO ILLINOIS, PART NO. EMCOR AHWX-092-3219.

4. MAY BE PURCHASED FROM WECKESSER CO., CHICAGO, ILLINOIS, VENDOR PART NO.

| | | | |
|---|---|-----|---|
| A | ENGRG RELEASE | | |
| B | DWG TITLE WAS ASSY ALTO COMPLETE SH 2 ADDED SECT G-G, SH 3 ADDED SECT H-H M/L ADDED ITEM 17 | 1/2 | 2 |



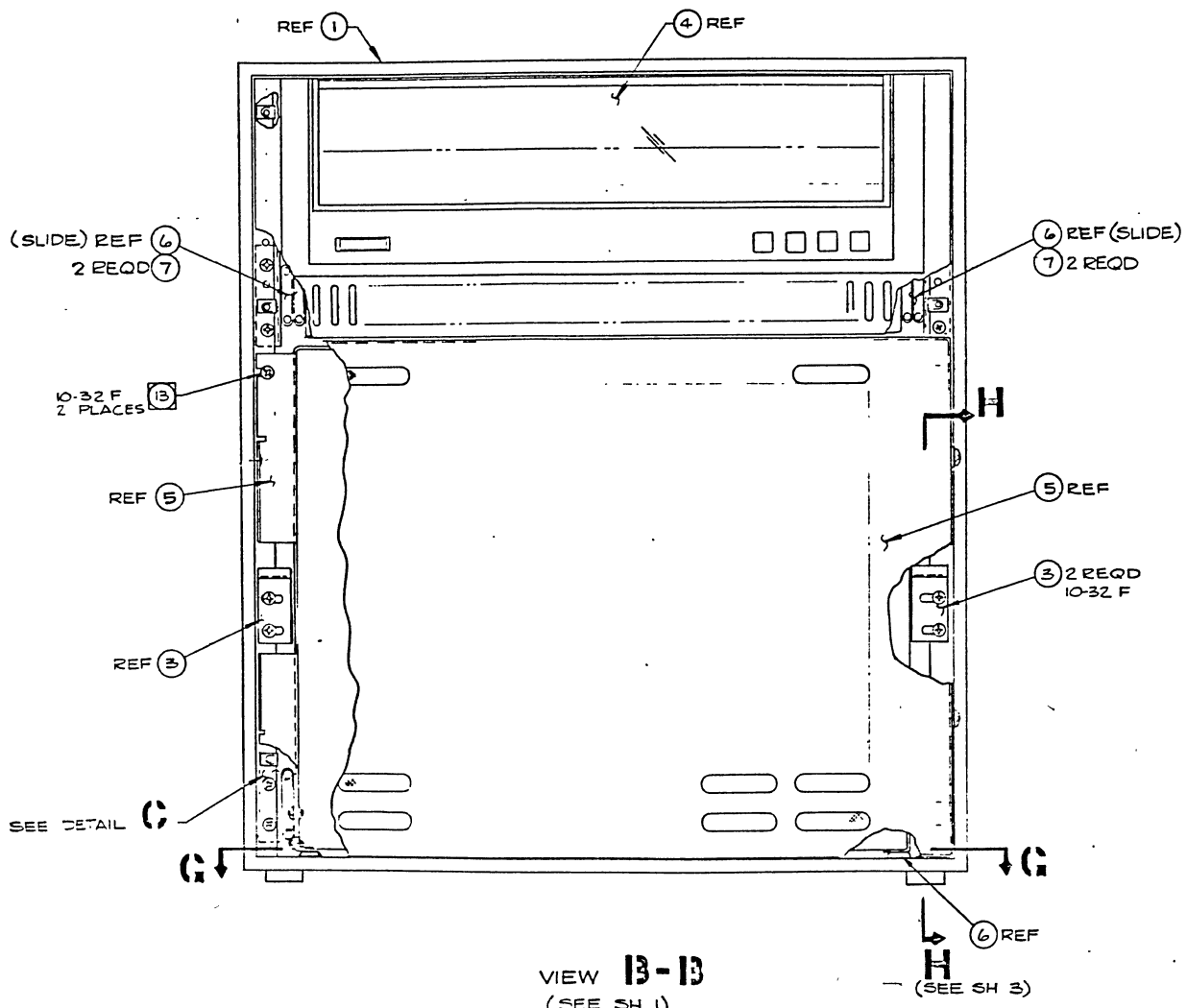
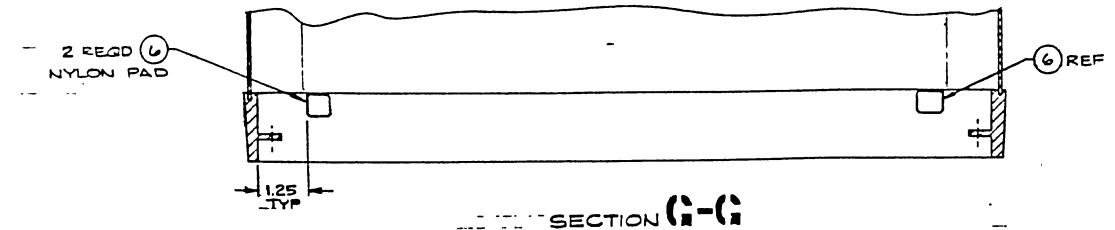
ENGINEERING RELEASE

DIST CODE ALT

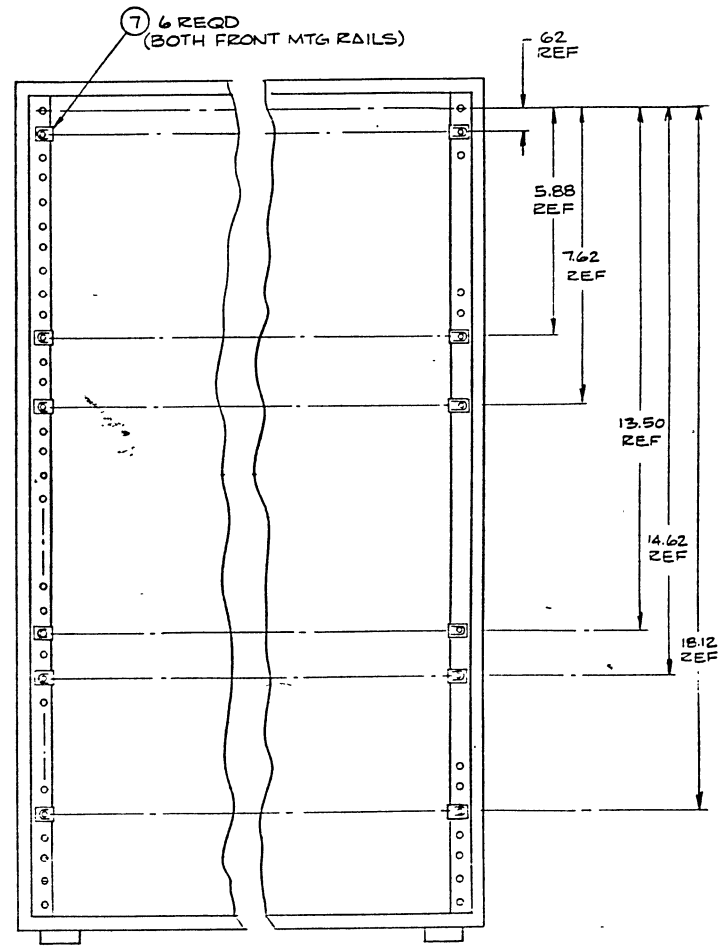
| | | | |
|---|------------------------------|------------------------------|----------------------|
| NOTES UNLESS SPECIFIED | DRAWN <i>Johnson</i> 1-27-76 | XEROX | |
| 1. TOLERANCES SEE 8-88 DIMENSIONED ANGLES .01/.02 | CHECK <i>Johnson</i> 6-7-76 | TITLE ALTO II | |
| 2. BREAK ALL SHARP EDGES .015 APPROX | APPR. | ASSEMBLY, CONTROL CABINET | |
| 3. RACH SURFACES | MATERIAL | CODE IDENT. 18338 | SIZE D |
| 4. ALL DIM IN INCHES | FINISH | OWG NO. 216299 | CHANGES LETTER B |
| 5. ALL TRUE POSITION TOLERANCES APPLY AT MMC | | SCALE 1/2 | DO NOT SCALE DRAWING |
| MODEL NO. ALTO II | | | |
| FIRST USE EWO 7YF9C | | | |
| NEXT ASBY. 216362 | | | |

(SEE SH 2) 13

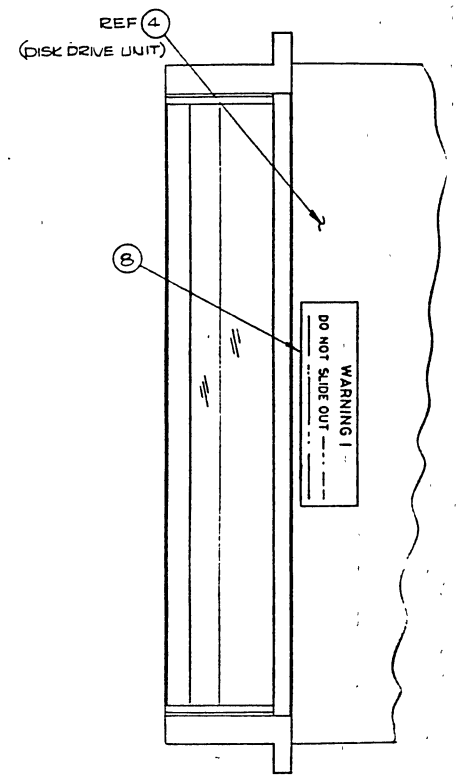
| LAL | REV | DESCRIPTION | CHK | DATE | APPROVED |
|-----|-----|-------------|-----|------|----------|
| | | SEE SH 1 | | | |



VIEW 13-13
(SEE SH 1)



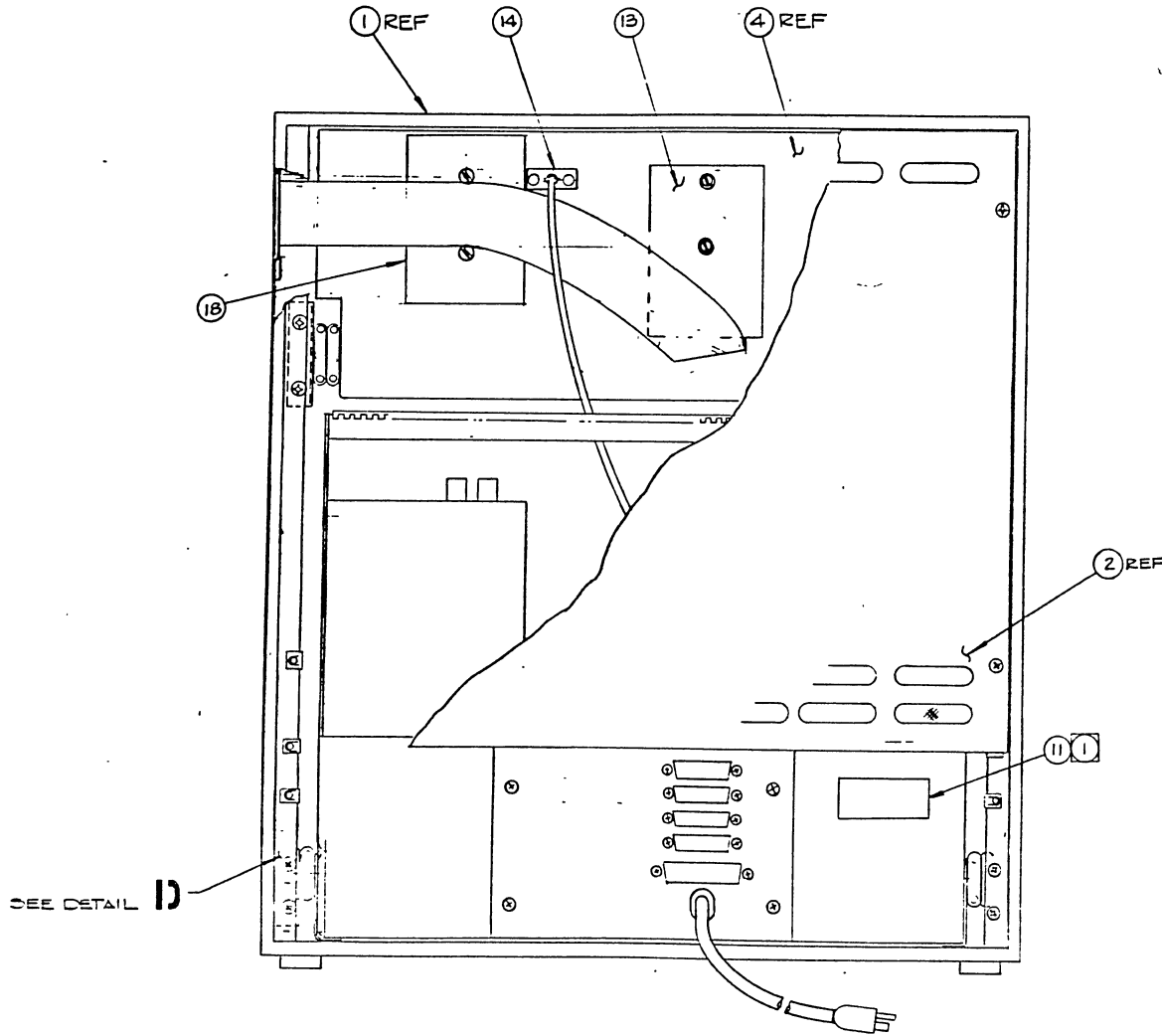
DETAIL C
(ITEMS 3, 4, 9, & 22 NOT SHOWN)



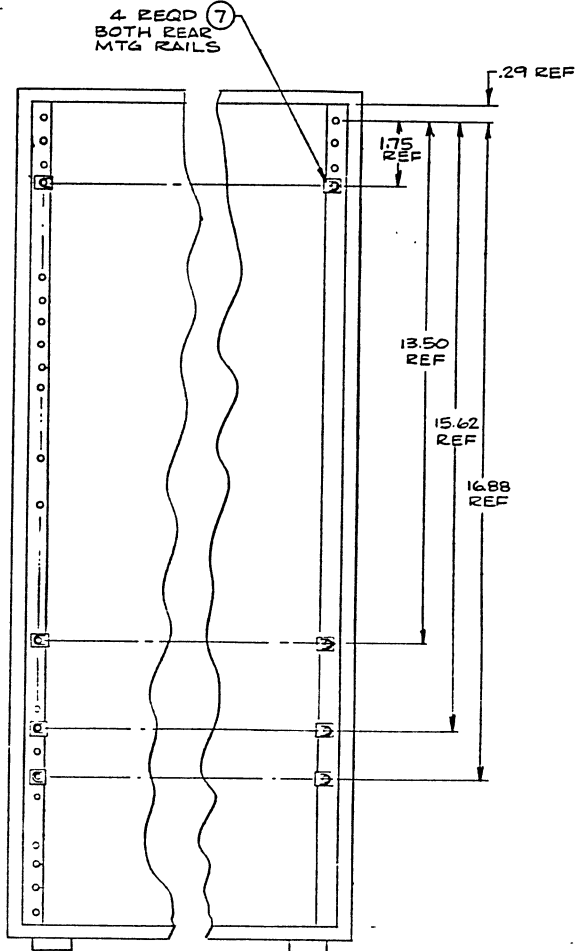
VIEW 17-17
(SEE SH 1)

| | | | |
|---|-------------|--------|---------------------------|
| NOTES UNLESS SPECIFIED | DRAWN | 1-2-76 | XEROX |
| 1. TOLERANCES UNLESS OTHERWISE SPECIFIED ARE AS SHOWN | CHECK | | TITLE |
| 2. BREAK ALL SHARP EDGES BY APPROX. 1/16" | APPR. | | ALTO II |
| 3. BACK SURFACES | MATERIAL | | ASSEMBLY, CONTROL CABINET |
| 4. ALL DIM. IN INCHES | FINISH | | |
| 5. ALL TRUE POSITION TOLERANCES APPLY AT MMC | | | |
| MODEL NO. ALTO II | CODE IDENT. | SIZE | DWG. NO. |
| FIRST USE EWO 7YF 52 | 18338 | D | 216299 |

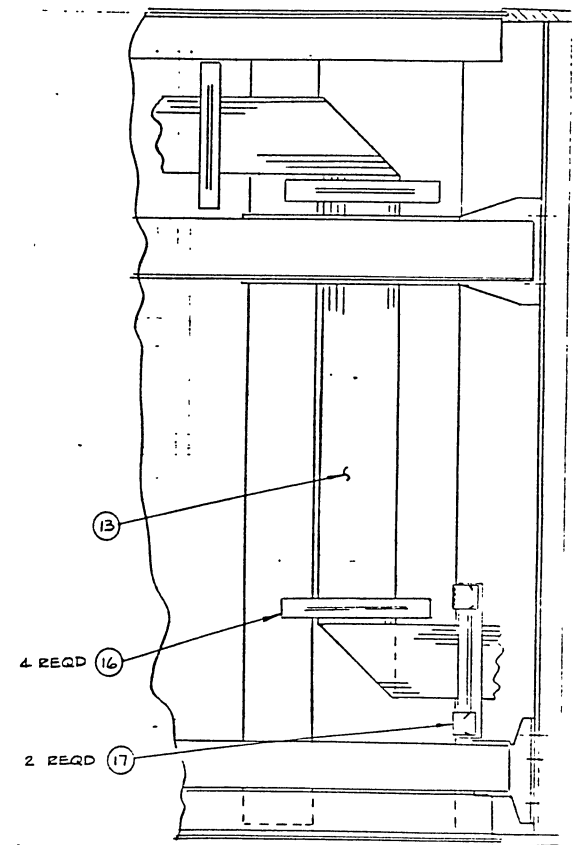
DIST CODE



VIEW A-A
(SEE SH 1)



DETAIL D
ITEMS 2, 5, 10, & 23 NOT SHOWN



SECTION H-H
(SEE SH 2)

| | | | | |
|---|----------------------|----------|------------------------------|----------------------|
| NOTES UNLESS SPECIFIED | | DRAWN | XEROX | |
| 1. TOLERANCES DIM & DR DIMENSIONED ANGLES SEE 8.010 1/16" | CHECK | APPR. | TITLE ALTO II | |
| 2. BREAK ALL SHARP EDGES .010 APPROX. | | MATERIAL | ASSEMBLY, CONTROL CABINET | |
| 3. BACK SURFACES | | FINISH | CODE IDENT. | SIZE |
| 4. ALL DIM. IN INCHES | | | 18338 | D |
| 5. ALL TIE POSITION TOLERANCES APPLY AT MMC | | | DWG. NO. | 216299 |
| MODEL NO FIRST USE | ALTO II EWO 7YF22 | | SCALE | DO NOT SCALE DRAWING |
| NEXT ASBY. FIRST USE | | | | SHEET |

