

Personal

Computer

System

MINI-DISK

TM



Mindset.

A new breed of environmental hardware with a special capacity to see your thoughts the way they happen in your mind. Graphically.



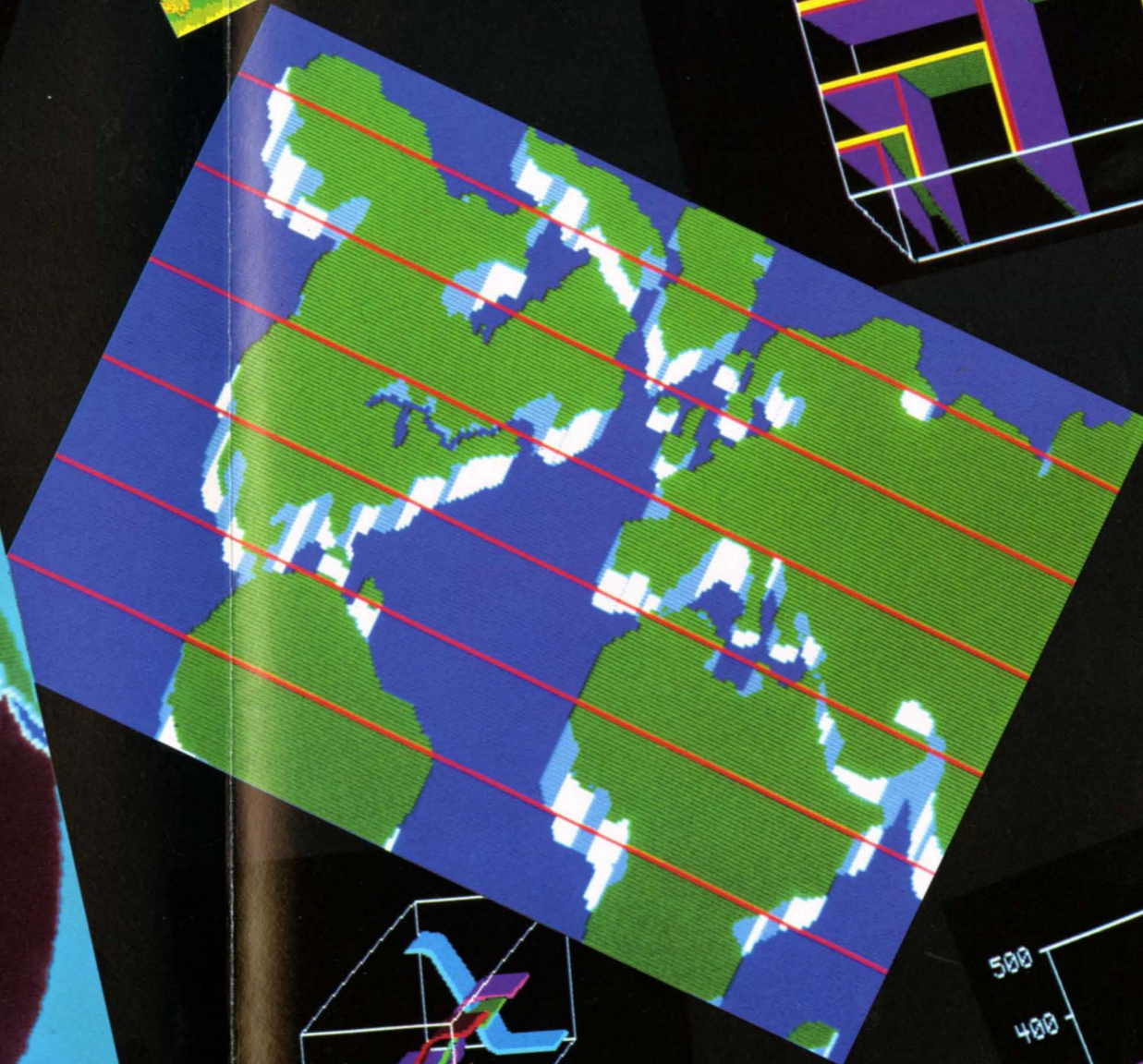
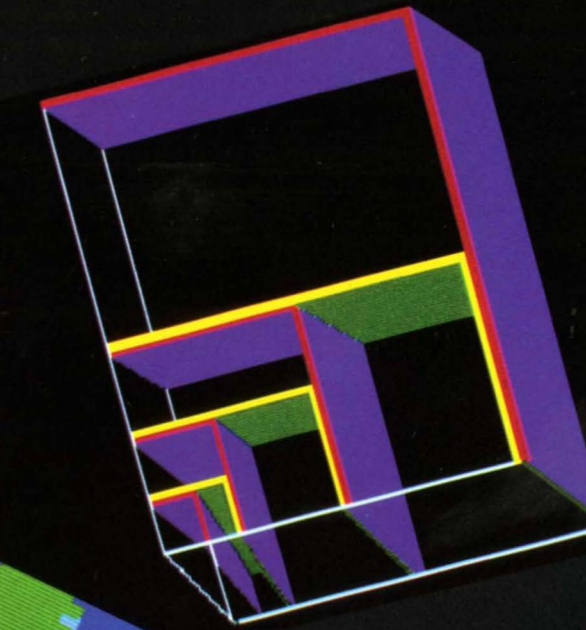
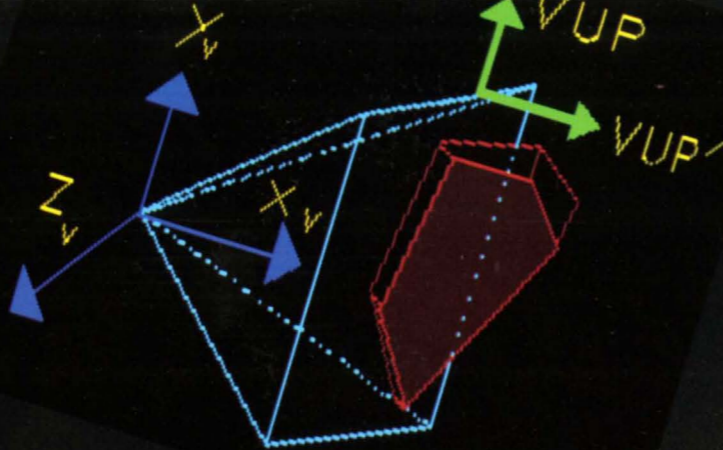
Until now, computers were seen as tools to enhance personal productivity. And they've kept that promise. As long as you had enough personal RAM to remember all the commands. As long as you could hold a split second of genius until the computer was ready to accept it. As long as you had only one idea at a time. And as long as your mental processes were as organized as a microchip's.

Introducing Mindset. The personal computer that can move and work and play as fast as your mind can. Because the Mindset has two extra chips. Two powerful, custom VLSI chips that are the heart of a new computer architecture.

Mindset can run the most popular applications software. The same programs that run on an IBM® PC. Because of the Mindset's unique design, it can run the new standard of software—programs that use a mouse, icons and windows—better than any other personal computer.

And Mindset leads the way in running the emerging generation of graphics software. Software that lets you express ideas and images quickly, easily, professionally.

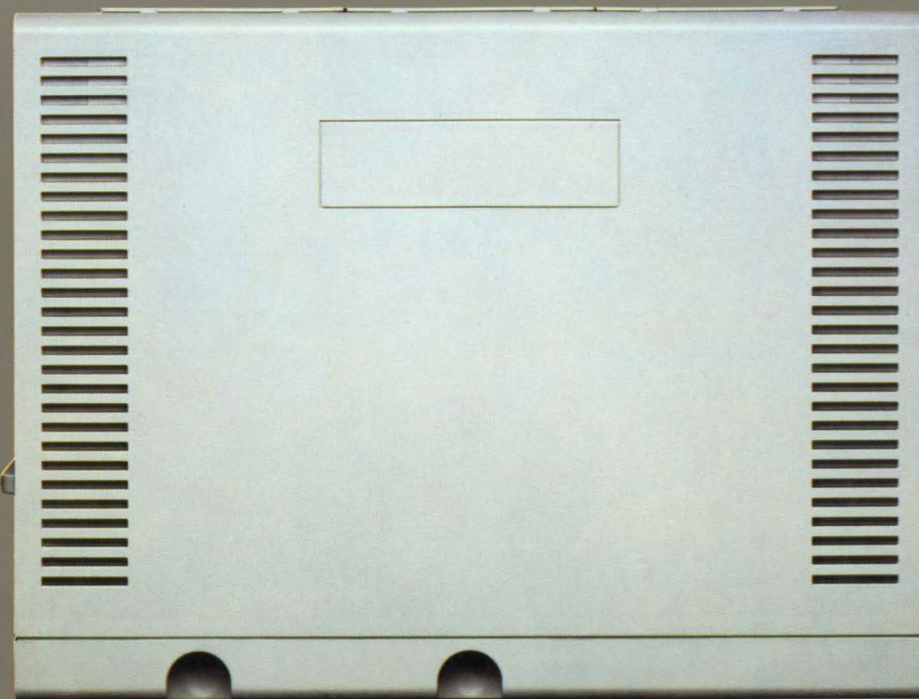
	FORECAST			
	FEB	MAR	APR	MAY
ACTUAL	350000	370000	290000	295000
	360000	390000	270000	320000
	410000	450000	380000	390000
	1120000	1210000	940000	1005000
	1070000			
	310000	320000	290000	340000
	330000	430000	490000	370000
	270000	290000	310000	320000
	360000			
	1810000	1100000	970000	1050000
	1190000			
	260000	310000	300000	340000
	250000	305000	310000	330000
	340000	330000	290000	370000
	370000			
	820000	850000	945000	900000
	1040000	1030000		



A visual representation of data or ideas is more telling, more arresting than a verbal representation. But until now, even with a computer, the results have been primitive and unwieldy.

Mindset's unique graphics architecture gives you the freedom to create visual representations easily, swiftly, clearly. You can combine graphics and text. You can draw. You can paint. You can create block diagrams, layouts, charts. With a new sophistication. With a new freedom of motion. From a full palette of 512 colors.

With Mindset, your ideas never looked so good.



System Unit

Processor

- ▶ 16-bit Intel 80186

Memory

- ▶ System ROM 32K bytes
- ▶ System RAM 64K bytes (32K processor RAM; 32K graphics RAM)

Dual Cartridge Ports

Diagnostics

- ▶ Power-up self test

I/O Expansion Ports

- ▶ 3 I/O expansion ports available

Built-in Interfaces

- ▶ RGB color monitor interface
- ▶ Composite video monitor interface
- ▶ Color or B&W TV RF modulator interface

Language

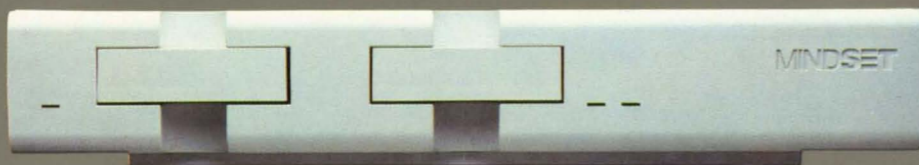
- ▶ GW-BASIC

Power Supply

- ▶ 110 volt AC, 60 Hz
- ▶ 50 watts

Physical Specifications

- ▶ 16.0 inches wide
- ▶ 1.2 inches deep
- ▶ 2.8 inches high
- ▶ 6.0 pounds

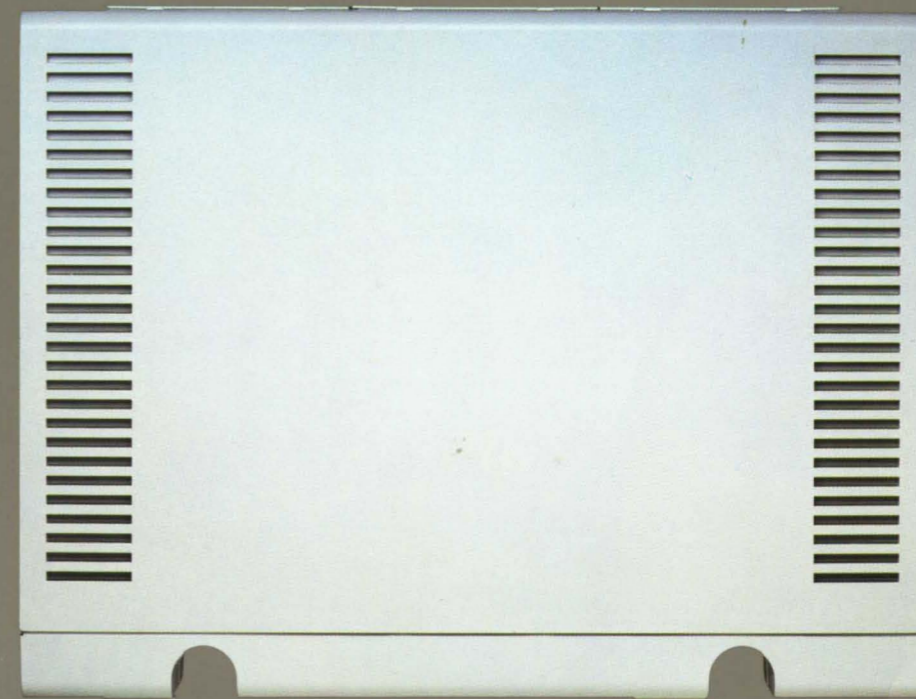


System Keyboard

- ▶ Detached 84 key low profile keyboard
- ▶ 10 programmable function keys
- ▶ 6 foot detachable coiled cable
- ▶ 2 connectors for attaching Mindset Mouse and Joystick

Physical Specifications

- ▶ 16.0 inches wide
- ▶ 7.0 inches deep
- ▶ 9° angle of inclination
- ▶ 3.0 pounds



Expansion Unit

Memory Capacities

- ▶ 96K bytes RAM (128K bytes RAM total with System Unit)
- ▶ Up to 224K bytes RAM (optional) (256K bytes total with System Unit)

Storage Capacities

- ▶ Single 360K bytes half-height 5¼" floppy disk drive
- ▶ Additional 360K bytes half-height 5¼" floppy disk drive (optional)

I/O Expansion Ports

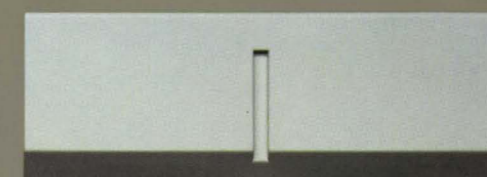
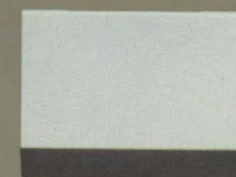
- ▶ 3 I/O expansion ports available

Operating System

- ▶ Mindset Disk Operating System 2.0 by Microsoft, Inc.

Physical Specifications

- ▶ 16.0 inches wide
- ▶ 12.2 inches deep
- ▶ 2.5 inches high
- ▶ 7.5 pounds (with single disk drive)
- ▶ 11.0 pounds (with 2 disk drives)



I/O Expansion Modules

- ▶ Compact, easily inserted into System Unit or Expansion Unit
- ▶ Provide great flexibility for enhancing unit

A B C D
E F G H
I J K L
M N O P

Printer Module

The Printer Module provides an industry standard interface for connection to any of a number of parallel interface printers.



RS-232-C Module

The RS-232-C Module provides an EIA standard RS-232-C serial interface for connection to any RS-232-C serial interface devices, such as printers or plotters.



Modem Module 300

The Modem Module 300 provides a full featured 300 baud communication interface with 300 baud asynchronous operation, auto dial, auto answer, DTMF and pulse dialing. And it connects directly to a standard telephone jack.

Modem Module 1200

The Modem Module 1200 provides maximum communication versatility by supplying high speed 1200 baud full duplex synchronous and asynchronous operation, and 300 baud asynchronous operation. It also offers auto dial and re-dial if busy, auto answer,

DTMF and pulse dialing, auto system wake-up feature, voice audio in/out coupling, and it connects directly to a standard telephone jack.



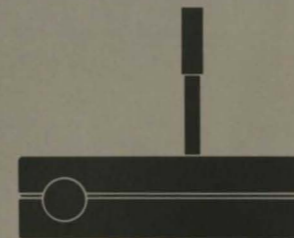
Stereo Module

The Stereo Module provides a connector for right-channel audio output, which, together with the Audio Left Connector on the System Unit, allows the system to be connected to any stereo sound system.



Mouse

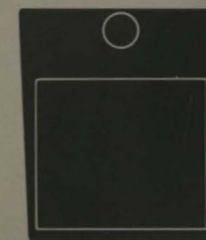
The Mouse is a precision graphics input device which can be rolled across any surface. It is used for cursor movement, menu selection, drawing and various graphic applications. Functions are controlled with two select buttons.



Joystick

The Joystick is a hand held cursor position control unit for use with educational and entertainment programs. It is self-centering and highly responsive. It attaches to either the right or left side of the keyboard and has independent select

buttons on both sides for right or left-handed play.



NVRAM Cartridge

The NVRAM Cartridge provides 8K bytes of non-volatile RAM for storing files and programs. This flexible memory cartridge can be used in conjunction with applications software to store short files such as word processing files, name and address files,

or user-written programs. The cartridge is inserted into one of the two cartridge ports in the System Unit. When the cartridge is removed from the System Unit, an internal rechargeable battery maintains stored data.



Carrying Case

The Carrying Case is constructed of heavy duty nylon with protective padding for safe transport. The Case accommodates the System Unit, the Expansion Unit, keyboard and cartridges. There are padded carrying handles plus an adjustable, detachable shoulder strap.

MINDSET

Mindset Corporation
617 North Mary
Sunnyvale, California
94086

Mindset reserves the right to
change its product offering at
any time without notice.

© 1984 Mindset Corporation.
IBM PC is a registered trademark
of IBM.
MINDSET is a trademark of
Mindset Corporation.