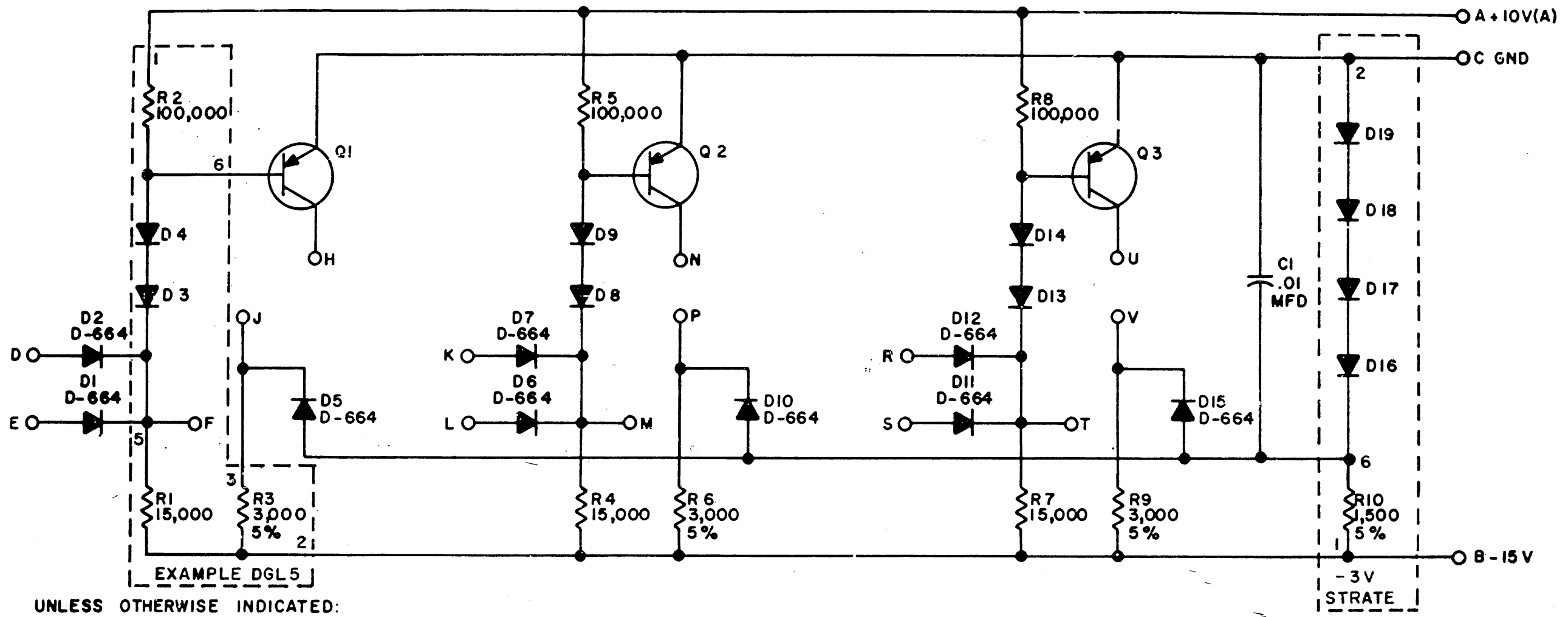


THIS SCHEMATIC IS FURNISHED ONLY FOR TEST AND MAINTENANCE PURPOSES. THE CIRCUITS ARE PROPRIETARY IN NATURE AND SHOULD BE TREATED ACCORDINGLY. COPYRIGHT 1965 BY DIGITAL EQUIPMENT CORPORATION



UNLESS OTHERWISE INDICATED:  
 TRANSISTORS ARE DEC 3639  
 RESISTORS ARE 1/4W; 10%  
 DIODES ARE D-662  
 PRINTED CIRCUIT REV. FOR DGL BOARD IS SIA

USE THE ETCH BOARD OF THE RIII

REVISIONS CHK'D NO. REV. REV. 5355 REV. 5460 C REV. 6750 D	DRN. I HAHN	DATE 6-10-65	TRANSISTOR & DIODE CONVERSION CHART				TITLE DIODE GATE SIII EQUIPMENT CORPORATION MAYNARD, MASSACHUSETTS	SIZE B	CODE CS	NUMBER SIII-0-1	REV D
	CHK'D R SILVERMAN	DATE 6-18-65	DEC	EIA	DEC	EIA		PRINTED CIRCUIT REV	D	F	
	ENG R SOGGE	DATE 6-18-65	DEC3639	2N3639							
	PROD.	DATE	D662	IN645							