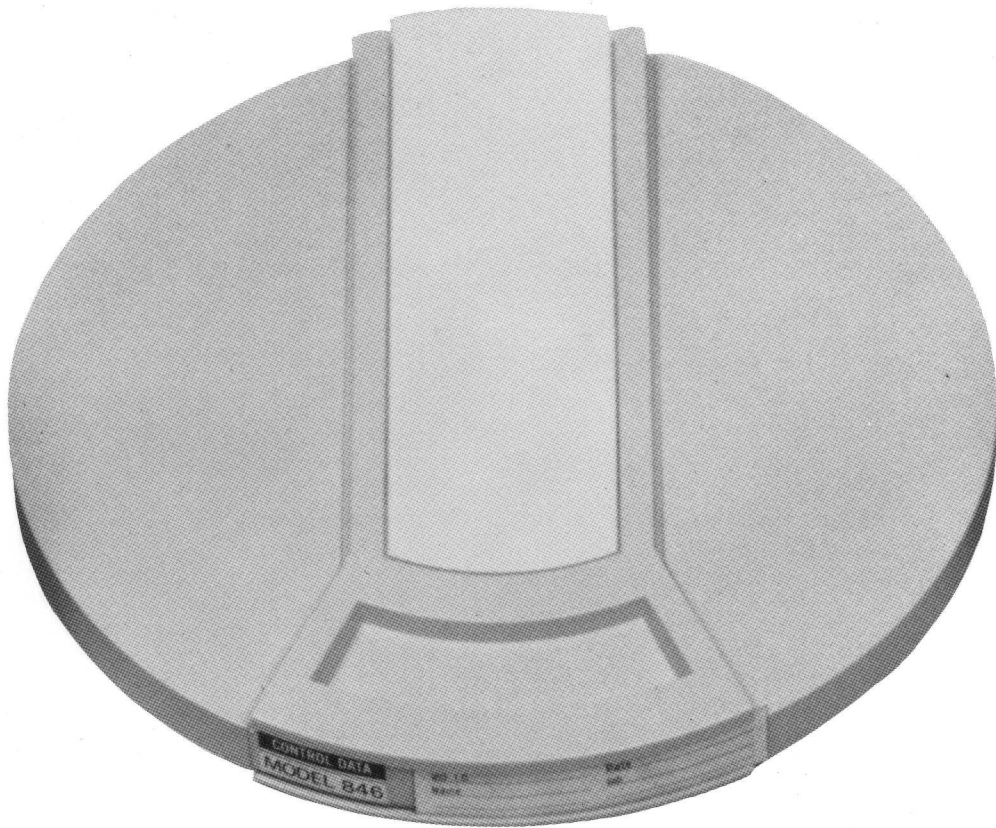


CONTROL DATA® 846 DISK CARTRIDGE

CONTROL DATA
CORPORATION



The Control Data® 846 Disk Cartridge is a single, magnetic-oxide recording disk and hub assembly to be used with associated disk storage drives. It is a high-speed memory device which can be quickly removed or installed to provide direct-access data storage for computer systems such as the IBM 1131 central processing unit, IBM 360/44 and the IBM 2310, or compatible disk storage drives.

Each surface of the recording disk contains 200 tracks, allowing a total storage capacity of up to 1.2 million 8-bit bytes. The disk is 14.03" in diameter, .050" thick, and is mounted within exceptionally strong plastic top and bottom covers which allow for easy handling and storage.

When the 846 Disk Cartridge is mounted on a disk storage drive, the disk adaptor and the armature plate are held to the drive spindle by a magnetic force of 35 pounds. An access door on the top cover is unlatched and opens automatically to allow read/write heads to enter the cartridge. The cartridge disk rotates counterclockwise at a nominal speed of 1500 RPM. Filtered air enters the cartridge through an air valve in the bottom cover to provide a positive-pressure, contamination-free atmosphere for read/write head flying. When the cartridge is removed, a spring-loaded retainer inside the cartridge secures the recording disk to prevent damage.

SPECIFICATIONS:

Number of Recording Disks: 1

Recording Surfaces: 2

Cartridge Size (with cover): 15" diameter
1.43" high

Weight: 4.5 pounds

Compatibility: IBM 1131 Computer System
IBM 360/44 Computer System
IBM 2310 CDS or equivalent

Capacity: Up to 1.2 million 8-bit bytes

Operating Speed: 1500 RPM

Number of Tracks: 200 per surface + 3 alternates

Operating Environment: 60°F to 100°F

Operating Humidity: 8% to 80%

All Control Data Disk Cartridges are designed and manufactured under strict quality-control conditions and warranted to perform as promised according to highly critical performance standards.

For further details, please contact your nearest Control Data representative.