



A GUI to RSJ command line mode

Table of contents :

P1- Prerequisites
P2- CDRWSEL installation
P3- CDRWSEL Start parameters
1 - Main Window
2 - Customization/option window
3 - How to finalyze
4 - Recorder
5 - Customizable INI file
6 - Special attach message
7 - First run step by step
8 - Tips
9 - Change Log
A - Author comments

P1/ Prerequisites :

Great RSJ V4 or higher from (<http://www.rsj.de>)
(probably it works with V3 too but I didn't test it)

REXXUTIL (standard OS/2 - eCS DLLs)

➤ I strongly recommend the use of **DANI's** drivers

Kill.exe from <http://hobbes.nmsu.edu>

TRK2ISO from <http://hobbes.nmsu.edu> if you would like use this option

RAMFS drive can be used for temporary file "SET TMP=" under config.sys
(If you would like use it, download it from hobbes "RAMFS110")

P2/ CDRWSEL installation :

Run INSCDRW.cmd to create object on the desktop

(It should be run from install directory - it seems that under several system, it could be run from other directory but it wasn't writed in this way)

Run INSCDRW1 if you are under eCS1.x

P3/ CDRWSEL Start parameters :

```
CDRWSEL -i -s -u
```

- i - Use values from INI file (default)
(any characters other "-i" or " " disables this function)
- s or -q (-s) - Activate Speed selection or (-q) use quiet mode
(-s) the parameter can be overwritten by INI file
- u or -t (-u) - Use only Upper case characters into help viewer
(-t) enable task list option.

cpuspeed - removed since V2.13.0

Exemple:

```
CDRWSEL -i -q -t
! ! !
! ! +--> Enable in "task list" option
! !
! +-----> Use quiet mode
+-----> Use ini file
```

```
CDRWSEL /i /q /t (This syntax is correct too)
```

Note:

When the program is first run and the cdrwsel.dat file doesn't exist, the New Drive List is run after answer to missing file message. Respond "save" to the first opened window before changing or updating drive list

WELLCOME TO GUI CDRWSEL

1 / Main Appl Window :

Appl Window style is selected through define ini parameters

V1 Window:



RSJ "drives" - Title may change according to language selection [CONTAINER]
 Enter or click 2x on the drive to change from
 [Free to Attached],
 [Attached to finalize],
 start [CD_view] (see mode) or [restore CD_view].

Icons Color:

Green=Free, **Yellow**=Running, **Red**=Attached, **Black**=Error,
Orange=Free_CD-Rom, **Blue**=CDView

mode	- Change from "Attach" to "View" or reverse	[PUSHBUTTON]
Sessions	- Select the number of existing sessions to skip 0 (default) or 1 to a max (cdrsel) 15	[SPINBUTTON]
Settings	- Access to define drive list dialog	[PUSHBUTTON]
Status	- Gives the result of chkdsk /v of [?:] (available space on cd - number of sessions...)	[PUSHBUTTON]
Run	- Run personnal program	[PUSHBUTTON]
Help	- Direct Help access	[PUSHBUTTON]

(MRB) Popup options (will change when on path, CDROM or attached CDRW):

trkcopy (beta)	- Copy all tracks (paths, cd-rom, video) to a place you'll have to specify . Data tracks (no finalize), audio tracks (no finalize) . DAO copy cd to cd (select speed + finalized + eject CD) . Video tracks (no finalize) . Specified destination can be Free CDRW or full HD/fullpath
trk2iso	- Opens one OS/2 window per file which is in the path "Free state"
CDboot	- Calls cdboot (PM) for the drives "Attached state"
Cdcopy	- Disabled (will be available in the feature)
Eject	- Option available on CD-ROM only

Note : This window support Color and Font drag and drop (a few limitations only)

WELLCOME TO GUI CDRWSEL

Bar:



X	- Exit program	[PUSHBUTTON]
S	- same as Primary menu	[PUSHBUTTON]
i	- same as primary menu	[PUSHBUTTON]
A	- CD_Attach	[PUSHBUTTON]
V	- CD_View	[PUSHBUTTON]
F	- Direct access to finalize options	[PUSHBUTTON]
R	- Run personnal program	[PUSHBUTTON]
H	- Direct Help access	[PUSHBUTTON]

Note : Background, A and V buttons use same colors as under "V1 Window"

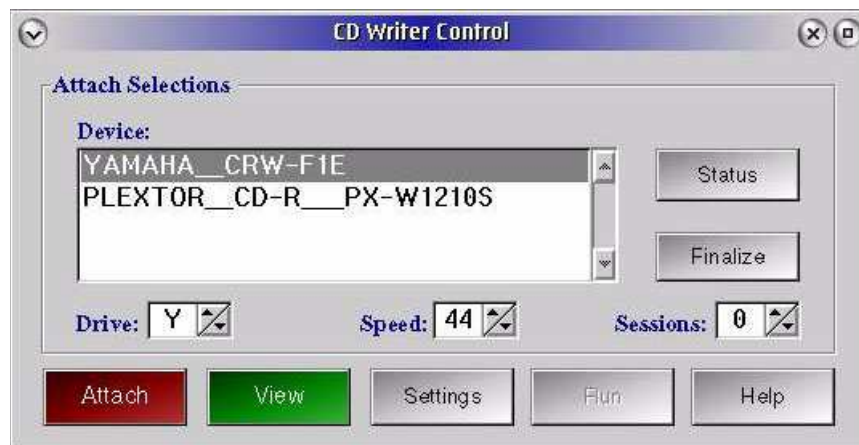
WELCOME TO GUI CDRWSEL

Window:



CD:	- this field is empty at first run time	[SPINBUTTON]
Drive:	- Drive letter to be used with the attached CDRW	[SPINBUTTON]
Sessions:	- Select the number of existing sessions to skip	[SPINBUTTON]
Attach	- Perform cdattach using previous parameters	[PUSHBUTTON]
View	- Start CDView using CDR/W parameters	[PUSHBUTTON]
Finalize	- Direct access to finalize options	[PUSHBUTTON]
Status	- Information on CD	[PUSHBUTTON]
Settings	- Access to define drive list dialog	[PUSHBUTTON]
Run	- Run personnal program	[PUSHBUTTON]
Help	- Direct help access	[PUSHBUTTON]

J Window:



CD:	- this field is empty at first run time	[SPINBUTTON]
Drive:	- Drive letter to be used with the attached CDRW	[SPINBUTTON]
Sessions:	- Select the number of existing sessions to skip	[SPINBUTTON]
Attach	- Perform cdattach using previous parameters	[PUSHBUTTON]
View	- Start CDView using CDR/W parameters	[PUSHBUTTON]
Finalize	- Direct access to finalize options	[PUSHBUTTON]
Status	- Information on CD	[PUSHBUTTON]
Settings	- Access to define drive list dialog	[PUSHBUTTON]
Run	- Run personnal program	[PUSHBUTTON]
Help	- Direct help access	[PUSHBUTTON]
Speed	- Change current speed stting only	[PUSHBUTTON]

2 / Customization/Settings :



Drives

- All defined drives [LISTBOX]
 - 1/ Click 1 time to change DRIVE name (entry fields)
 - 2/ Click 2 times to delete unwanted DRIVE from list
 - 3/ Entry manually a new drive into entry fields

Note:

You'll be prompted to save the new drive list at CDRWSEL close.

Value of CTL + ID is checked to determine if the input is a new entry or should overwrite the selected drive.

Drive name

- A generic name for the drive to use

ctl

- Adapter number (could be found under Hardware Manager)

id

- Drive position (IDE) or SCSI ID

Speed

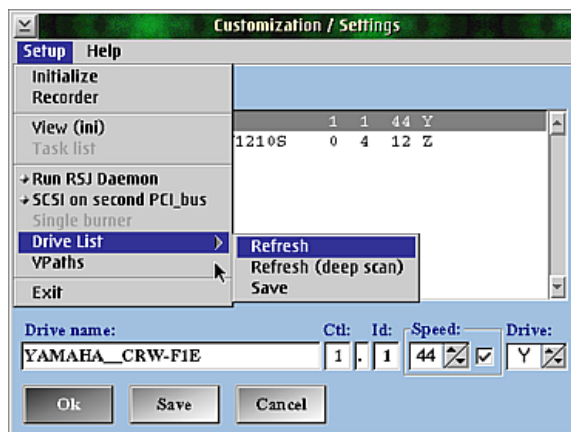
- Change current drive speed and new default for next use
- [x] click on check box to force use of speed parameter

ok

- Validate new added drive

Drive

- Assign a drive letter to a device (option enabled with "V1 Window" style)



WELLCOME TO GUI CDRWSEL

Setup

- Access to
 - Initialize (Customizable INI file)
 - Recorder
 - View (ini)
 - Task list (with pam '-t')
 - Run RSJ Daemon
 - SCSI on second PCI_bus (Mother board dependant)
 - Single burner (Usable if less than 2 drives in list)
(Use this option when only 1 physical burner is installed and **normal attach doesn't work**)
 - Drive list
 - 1) Refresh (drive list with drive names found)
 - 2) Refresh (* deep scan - generic name used)
(* will check each adapter position)
 - Vpaths (define paths to tracks files - max=6)



- * To specify an audio CD in a CD-ROM, ignore the first "\" and the text following "drive_letter:" is used as comment and drive is supposed CD-ROM: S:PIONEER_DvD-ROM (see V1_Window screenshot)
- * Blanks in path name are not supported (program will change them into "_").

- Exit

* (deep scan) - Does an auto detection of eligible CDRW for RSJ
(scans ctl 0 -> 1 and id 0 -> 15 "when INI file isn't used")

It clears existing list and adds new detected DRIVES

- 1/ CDRWxy (Drive is ready ctl=x, id=y)
- 2/ CDR?xy (Drive not ready flag received ex: no CD in the burner)
- 3/ CDR*xy (Drive in use. Z: is already in use)

HELP

- Access to
 - How to : Read file cdrwsel.doc
 - ? : My tool version.release.modification

Note : If drive list has changed without save, you'll be prompted to save it at exit

3 / How to finalize ?

Finalize Options

Emergency eject of selected drive

Close CD and Finalize session :

Volume ID :

Publisher ID :

Data preparer ID :

Application ID :

Copyright file :

Abstract file :

Bibliographic file :

Close options :

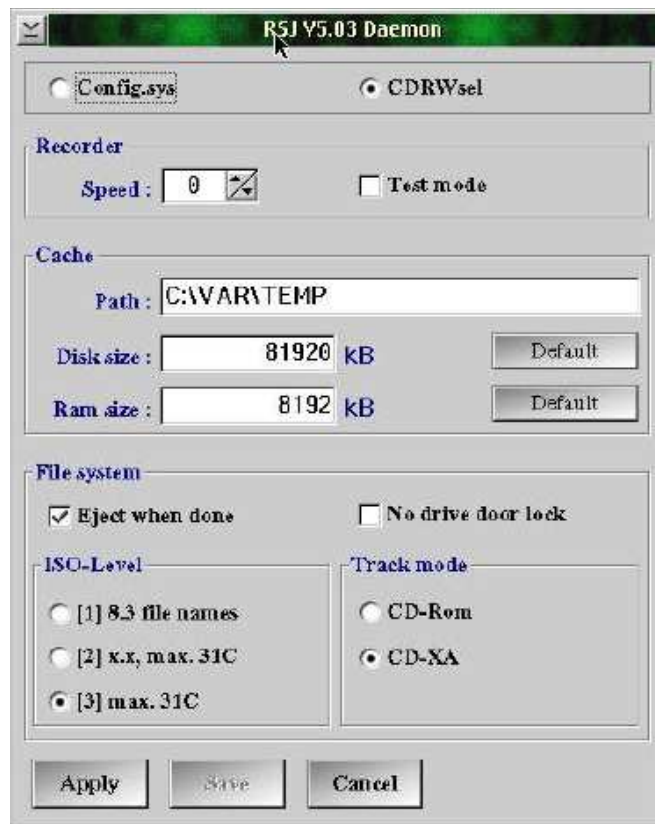
☐ No Finalize ☐ Finalize ☐ No Finalize/Seal ☐ Finalize/Seal

Drive to finalize : Y

Click on Finalize button from app Windows followed by :

- a/ No finalize = Close CD only
- b/ Finalize = Close CD and finalize
- c/ No Finalize/Seal = Close / Seal CD
- d/ Finalize/Seal = Close and Finalize / seal CD
- e/ Emergency eject = Flush buffers and eject the CD
- f/ Add complementary comments (only validated with b/ and c/)
ex: Copyright, Author ...
- g/ Unseal (remove seal protection if Cd was written by RSJ)
- h/ Erase RW media only

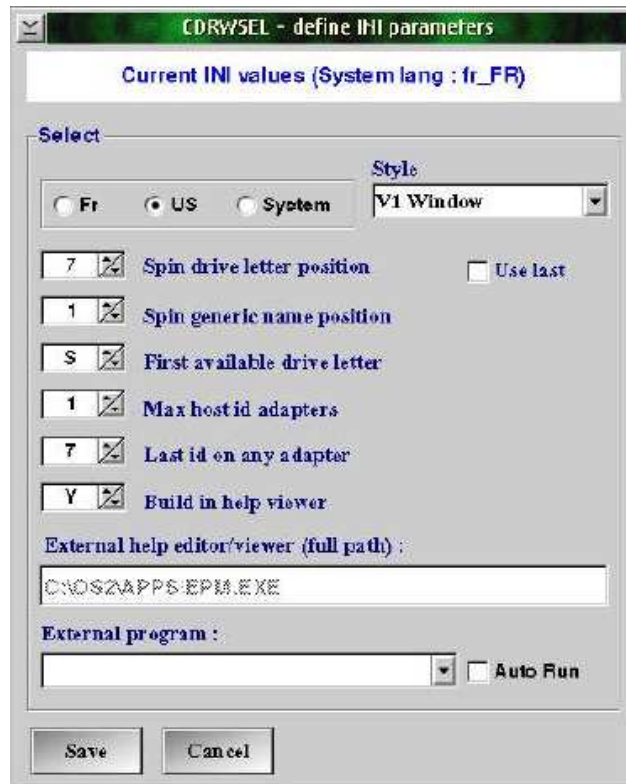
4 / Recorder:



* The RSJ version is displayed in the window title.

- config.sys (select this option if you want change default CDWFSD from config.sys. Changes are taken at next reboot)
- CDRWsel (select this option to load/change CDWFSD parameters for all new attach process - Detach all drives before using dynamic CDWFSD replacement)
- Other options are same as under RSJ CD Writer control

5 / Customizable INI file :



* Click on save to create or update cdrwsel.ini file

Language selection :

- Select your language FR / US / SYSTEM (set_lang= from config.sys)

App Window style :

- Select your app style window from the drop down list

Spin drive letter position :

- Select the default drive letter to use for cdattach
- Use 1 for Z, 2 for Y, 3 for X and so on (don't use bellow range)

Spin generic name position:(*)

- Select the Drive name mostly used (= line number into the list)

(*) USE last :

- Click on this option to use values close values instead of previous defined values

First available drive letter :

- Define lowest drive letter available for Attach
- Range goes from Z to the letter you assign

Max Host id adapters :

- Specify highest available ctlid (example for 0 and 1 follow):
- 0 - for the first IDE controler
- 1 - for the second IDE controler

WELCOME TO GUI CDRWSEL

Last id on any adapter :

- Specify highest IDE / SCSI id available for auto-detection
- will save time at auto-detection time (1 is good for IDE)

Build in help viewer :

- Specify "Y" to use internal viewer "N" for any user preference

External help editor/viewer :

- only with previous option = "N"
- specify full program path to use ex: c:\os2\apps\epm.exe

External program :

- Drop down the list and **click on -new-** to create a new entry
- Click on an existing entry will ask you to delete it or not ?

Auto Run :

- Start the selected program at CDRWSEL startup

6 / Special attach message :

Attaching a non blank CD results in the following message where you can find number of sessions, data or audio CD and used space.

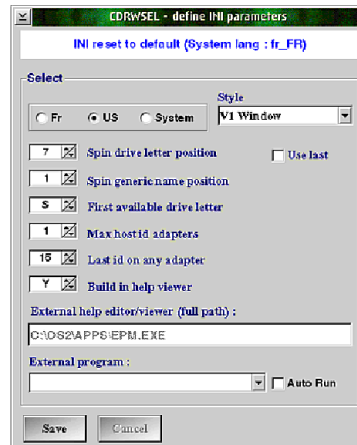


Choice the correct action to do. Continue to work the attached CD as it is.

WELLCOME TO GUI CDRWSEL

7 / First Run step by step :

- RSJ must be installed
- Unzip cdrwsel zip package into a temporary path
- Run inscdrw1.cmd to installed cdrwsel following eCS rules
- Click on cdrwsel icon to start it
- Initial cdrwsel window :



Click on save

- Setting window appears now :



Click on save

If you have SCSI drives, check the Ctl of the found scsi drives and if they aren't correct, select PCI bus option and refresh the list. If the correct value aren't displayed, run "refresh deep" with burned CD in the drives (you can change names from the bottom line or note Ctl and id, run refresh and update ctl.id with values found).

- Restart CDRWSEL
- From the main window, you can select settings to change the drive list (don't forget to save the list after you changed it). You can select **Setup** and :
 - Initialize to change window style (bar - window - V1 window - J window).
 - Click on Run RSJ Daemon if CDWFSD is commented in your config.sys file. This will enable Recorder option too.
 - Once Recorder is enabled, you can change CDWFSD settings
 - Add or Update Vpaths list with CDROM drives and or tracks path on your hard disk

8 / Tips :

Starting CDRWSEL without RSJ installed: add "SET CDRWSEL_BP=CDWFS.IFS"

Error at startup :

Check that under "set path=" or "set dpath=" has the root in it where config.sys is.

Check that under "set tmp=", the path has no blank character.

Check that RSJ daemon was added into config.sys as "run=" with or without "REM"

Delete older CDRWsel.INI under your user_ini path.

RC20 during attach :

Check that the ctl and id numbers are correct. Normal drive list refresh can have incorrect values depend of your hardware configuration and drivers loading sequence under your config.sys. If it is the case, change max ctl number to a higher value and run refresh (deep scan) with a CD inserted into the drives. Ready burners have a generic name starting with 'CDRW'. Use the found ctl.id to correct the normal refresh list

- If the drive was added under CDDRV.INF, check for correct syntax.
- To check RSJ attach command, issued under OS/2 window following command :
cdattach z: -d CDR:x.y (x= ctl_number , y=id_number - the dot can be changed to ',')
- If You only have one burner on your system, try to use 'Single burner' option under setup

Mouse Right Click is available under "V1 Window" only. MRB click on background !!

Attach or View failed :

Change the separator between ctl and id from "." to ","

For any other problem:

Take screenshots of the failure and tell what you are doing to go into a problem. Take "view ini" screenshot and tell how config.sys is defined. Send an email and specify "CDRWSEL usage problem" as subject.

Hardware Manager :

- a/ Open system setup folder (should be on the warp center)
- b/ Open Hardware Manager
 - * You should know under which DMA_CTLR you attached your CDRW
Main board manufacter recommendation is : 0 for disk 1 for others
 - * Before your CDR, you'll find
ATAPI_0 - Use 0 as id
ATAPI_1 - Use 1 as id
 - * For SCSI CDR (here is a exemple)
CDROM_(3,0)
| |
| +---> lun = 0 (this isn't the Ctl value)
+-----> id = 3

Part of my config.sys file (changes only needed drives to worm drive)

```
BASEDEV=DANIATAPI.FLT /!SCSI
...
REM *** 2x HD - 1x DvD - 1x CDRW / UDMA enabled for all drives ***
BASEDEV=DANIS506.ADD /A:0 /U:0 /BM /U:1 /BM /A:1 /U:0 /BM /U:1 /BM
...
REM *** S0=IDE_DvD S1=IDE_CDRW S2=SCSI_CDR S3=SCSI_CDRW ***
BASEDEV=OS2ASPI.DMD /ALL << If OS2ASPI is used, add /ALL
BASEDEV=LOCKCDR.FLT -S0 -S2 << Remove not used drivers
DEVICE=C:\CFS\RSJSCSI.SYS
IFS=C:\CFS\CDWFS.IFS
RUN=C:\CFS\CDWFSD.EXE -p "C:/CDWFS/disk_cache" -c49152 -b8192 -t2 -i3 -smax
...
If CDRWSEL attach or view is not working, try previous 'red' recommendations first (was
reported by user).
```


9 / Change log :

Thanks to Alan Townsend (Canada), Erik, Kevin and all "Anonymous" for they good suggestions and test resulting into improved CDRWSEL for all

* New V2.13.1

- 1/ Program path name accept any valid path name 'with or without blanks' until it isn't used for temp files.(temp files are under set tmp=...)
- 2/ "V1 Window", once a device is selected, remains selected until you decide to change the drive (wasn't the case before !)
- 3/ All *.bmp files are no more needed. Bmps are taken from the DLL now
- 4/ If "Error" occurs at attach, icon changes immediatly + message and returns immediatly to free after answering the message. It is faster and a new selection can be done quickly.
- 5/ You can add up to 6 paths or CD-Rom with tracks (Vpaths option) and they are selectable from "View". New Icon was added for HD or CD-ROM tracks.
- 6/ trkcopy allow you to do a full copy of tracks to a different location.
- 7/ If trk2iso is installed, call it with MRB (V1 window) when on a **CD_view path**
- 8/ You can call PM cdboot from MRB (V1 Window) when **CD is attached**
- 9/ "Window" and "J-Window" support limited drag and drop color (Status & Finalize have same color). "Bar" doesn't support drag and drop color but background, A and V buttons have same color as under any other window.
- 10/ If config.sys isn't found at cdrwsel start, a message is now displaied instead of a scrash.

* New V2.12.6

- 1/ Corrected a drag/drop problem under "V1 Window".
- 2/ "Mode" button accept drag and drop color now (click on the button each time you change button color.

* New V2.12.5

- 1/ Corrected a bug found with temporary files on RAMFS drive (RAMFS110 used)
- 2/ Corrected a minor problem which could appear at (deep scan) run
- 3/ Parameters no more positionnal (ex: -i -s 2000 or 2000 -i -s or -s 2000 -i ...)
- 4/ Parameters can be specified with a '-' or '/' ex: **-i** is same as **/i**
- 5/ "V1 Window" Mode button has now a blue color for "CD_View" mode like the icon.

* New V2.12.4

- 1/ Removed available drive letter limitation (between range is made available)

* New V2.12.0 -> V2.12.3

- 1/ Changed "V1 Window" to a new "V1 Window" which is simplified and "enter" on the selected drive is enough to attach or finalize the CD.....
- 2/ Adapted setting window (new spin button : define drive letter to burner)
 - * This option is enabled if "V1 Window" style is selected *
- 3/ Corrected enable/disable speed button according speed used or not

WELLCOME TO GUI CDRWSEL

* New V2.11.0

- 1/ Attach button is made disable if the drive number is in use
- 2/ Added 'Recorder' setup (enabled if 'Run RSJ daemon' set)
 - . Allows to change CDWFSF Daemon parameters without reboot
 - . Allows to change CDWFSF parameters under config.sys
- 3/ Added 'Single burner' option used if only one burner exist on your system and normal 'attach' doesn't work (ex: config problem)
- 4/ Use of a kill thread program (from hobbes)
- 5/ Changed INI and temp files location according eCS1.1 rules
(add SET USER_INI= , SET TMP= into config.sys if missing)
SET PROGRAMS= is used by INSCDRW2.CMD install program only

* New V2.10.1

Forgot to activate the possibilty to add manually a new drive into the List (stupid error :().
Now corrected (ctl + id are checked to determine if the entry field should replace the selected drive or add it into the list)

* NEW V2.10.0 (Many changes, updated design...)

- 1 / INI file is now a real INI file (binary)
- 2 / DAT file is no more used (integrated into INI file)
- 3 / At start, it suggest you to create the INI file. If an old DAT file exist, INI file will be updated with your drive list.
- 4 / At Attach time, Cd status is checked. A message requires an action if audio or data CD :
 - a/ isn't empty
 - b/ is sealed or was writen by other product like something starting with "easy Cd "
 - c/ number of sessions on the CD is given
- 5 / Unseal and CD erase options are now available
- 6 / Defining INI parameters has changed
- 7 / You can add under INI parameters an other program which can be lunched automatically at CDRWSEL start or through Run button.
(check [enable] button for lunch at CDRWSEL start)
ex: CDWCTL.EXE (cd "writer control program" from RSJ)
- 8 / You can choice 4 kind of App Windows ('bar' the small one , 'Windows' .
A new one, 'V1 window' the "original" design and the 'J window' which give the most available direct options access...
- 9 / Added support for external language file
- 10/ Changed RSJ detection
- 11/ App Windows fonts can be changed
- 12/ App windows can be moved on the destop and position is saved
- 13/ Last drive used + drive letter can be saved at close time
- 14/ CDRWSEL can now start RSJ daemon for you
- 15/ Made several visual changes to have a better look
- 16/ Parameter -i is now the default
- 17/ New parameter can be specified at second position : -q for quiet
- 18/ New parameter can be specified at forth position : -t (Task list)
- 19/ Improved spin button slowdown
- 20/ Corrected bugs

WELCOME TO GUI CDRWSEL

* New under V2.0.1

- > corrected a few error left under V2.0.0
 - Checking about installed RSJ could failed if config.sys exist under cmlib
 - Save of new drive list could fail
 - one more bug corrected
- > Activated internal function to use French language
- > changed a few comments under several windows

* New V2.0.0

- > AUTO is replaced by New Drive List
- > New Drive List is run at missing cdrwsel.dat file detection
- > Program detects if RSJ is installed or not (CDWFSD.EXE)
- > Corrected a stupid error under V1.6.0 (did an unwanted proc remove)

* For preview releases, read the cdrwsel.doc file

...

WELLCOME TO GUI CDRWSEL

A / Author comments :

Use it at your own risk (note: I have no problem under my system)

My responsability can not be engaged for any problem

No support is available but small improvement can be done

Was virus free (Norman scan) under my system on 21/12/2003 (MM/DD/YYYY)

YES , IT IS FREeware :-)

(c) Remy Dodin

PS: I'm Scanning RSJ news site regularly !

mailto: remy.dodin@libertysurf.fr