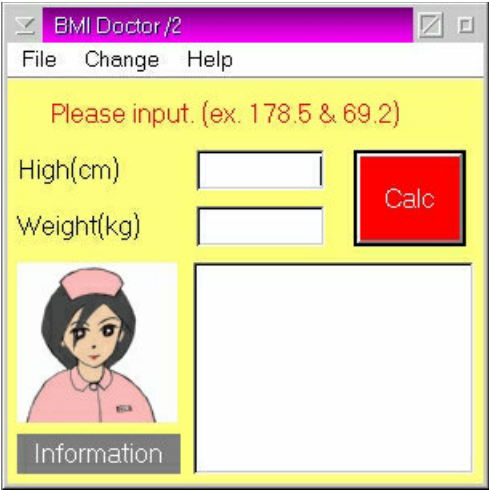


BMI Doctor/2 ver 1.15

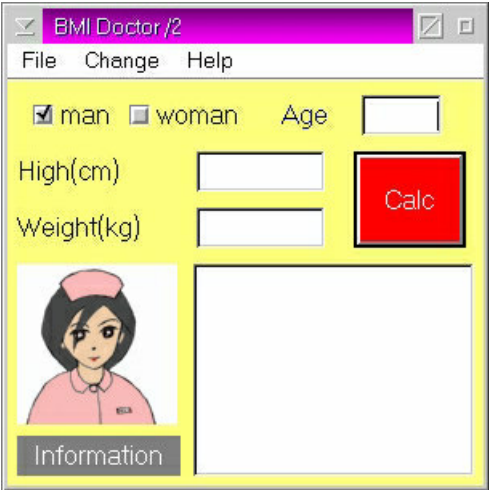
Copyright torakun (TetuGen. ikeI)
Mail: nyao280r@gmail.com
Programming explanation of BMI Doctor/2 (Japanese Only).
<http://hp.vector.co.jp/authors/VA028575/drdialog.htm>

What is this?
Program to calculate BMI (body mass index) & BMR (basal metabolic rate).

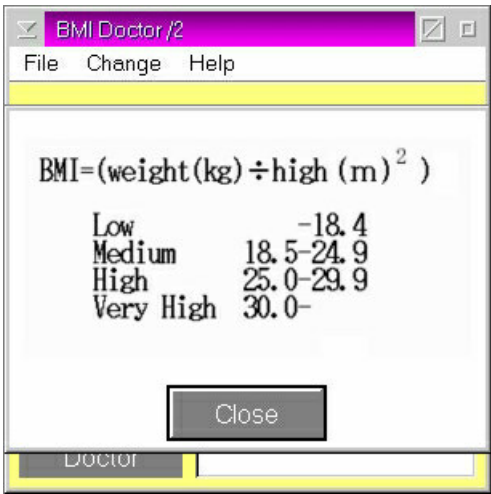
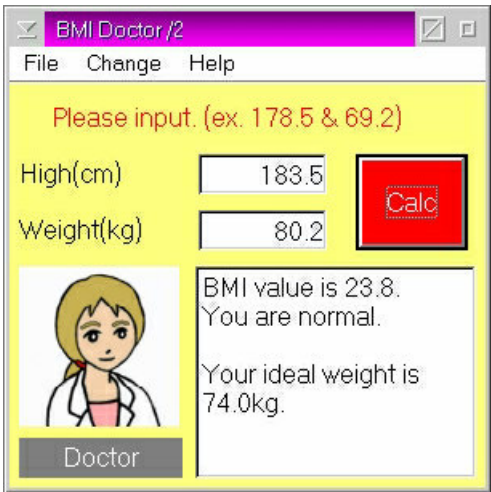
Run install.cmd.
Enjoy!



BMI mode.



Basal metabolic rate mode. (Change > BMR)



BMI value list. (Help > BMI value list)

File>Add DB(A calculation result is preserved in a BMIDR2.txt.)
File>Open DB(BMIDR2.txt is opened.)

Let's make original dll file. (BMPTODLL.CMD is included in Dr.dialog.)

BMPTODLL.CMD BMIDR2.DLL BMIDR?.bmp

My BMP Pack(<http://hp.vector.co.jp/authors/VA028575/BMIDRBMP.1zh>)